



California Faucets®

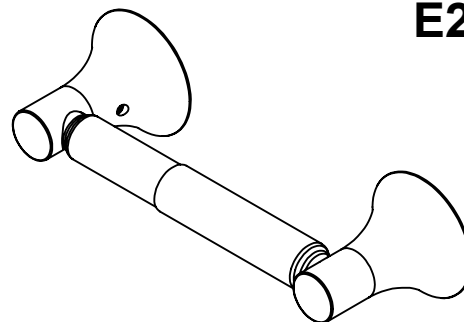
**DIVA**

**TWO POST TOILET PAPER HOLDER**

### Features

- Over 30 finishes including 14 PVD finishes
- Solid brass construction
- Includes mounting hardware
- For additional product offerings, see [www.californiafaucets.com](http://www.californiafaucets.com)

**E2-TP**

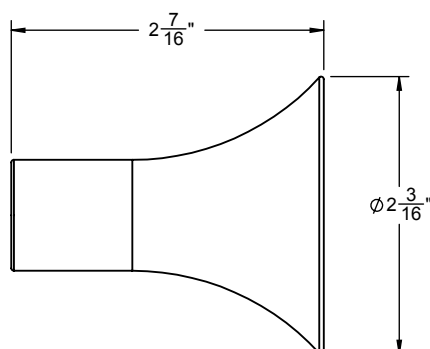
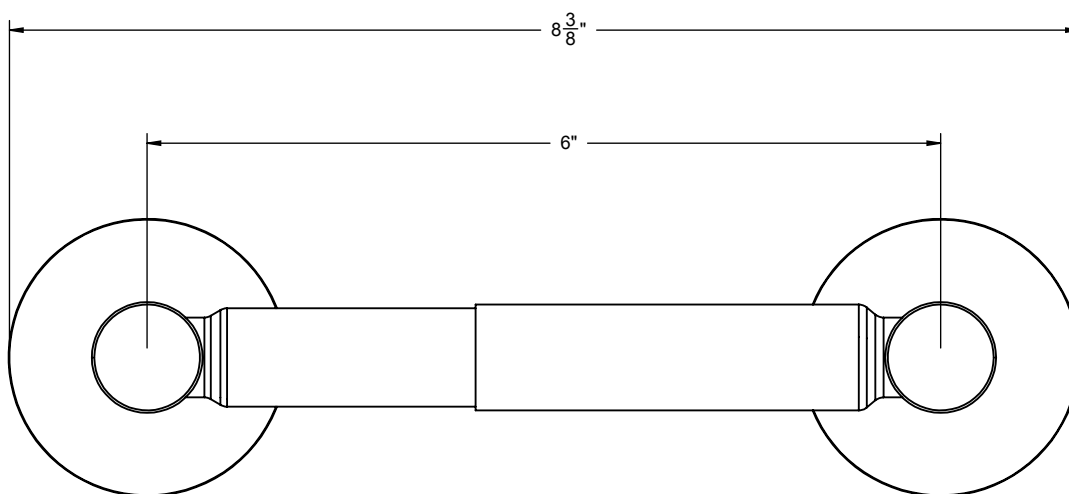


### Codes/Standards Applicable

Meets or exceeds the following at date of manufacture:

- None applicable

(4X) 1X3/8" ANCHOR (4X) 8X1/2" PHILLIPS HEAD SCREW



ALL DIMENSIONS SHOWN TO NEAREST 1/16"