

SANTEC

FLUID IMAGINATION

DESIGNER SERIES

ROMAN TUB FILLER



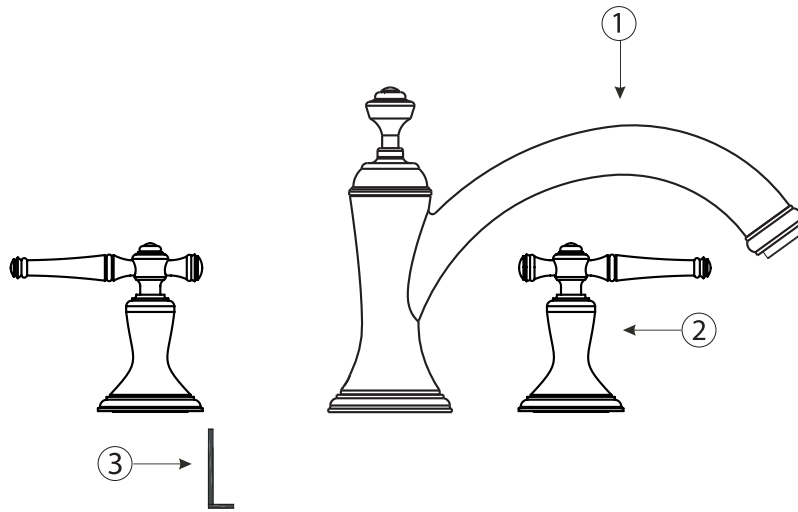
KEEP THIS INSTRUCTION BOOKLET FOR FUTURE REFERENCE

Important : Please register your product online at www.santecfaucet.com within 30 days of purchase. Santec reserves the right to request additional documents before servicing warranty requests.

SANTEC has the right to make necessary design changes where applicable.

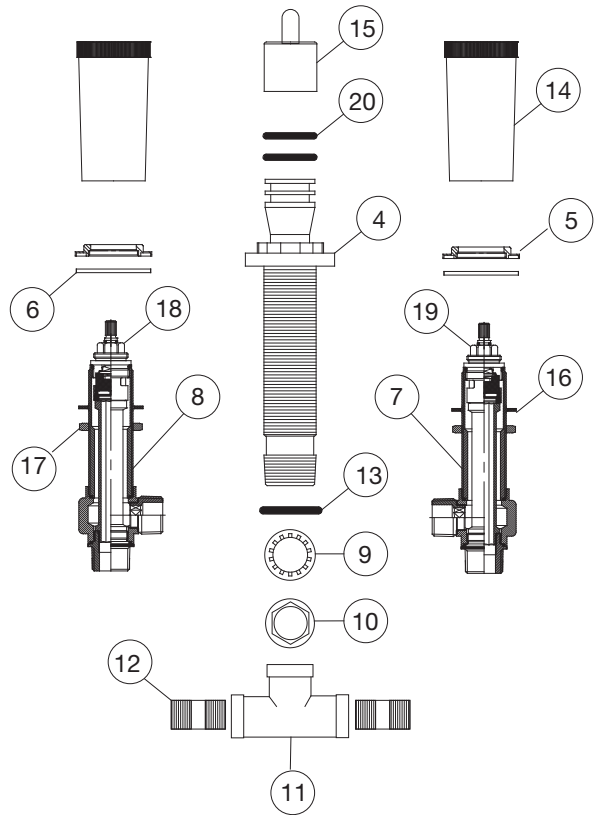
*Illustration may not depict actual products

PARTS BREAKDOWN



#	SPOUT PART DESCRIPTION	PART #
1	Complete Spout Assembly *	PS-5__00 - U**
2	Complete Handle Assembly *	RT-__**
3	Allen Key	

#	ROUGH PART DESCRIPTION	PART #
4	Quick Connect Spout Shank	KQ-5300S
5	Top Mounting Brass Lock Nut	PM-090
6	Rubber Washer	PM-407
7	"COLD" - Valve Assembly	P0496
8	"HOT" - Valve Assembly	P0495
9	Crimped Metal Washer	PM-551
10	Shank Lock Nut	PM-550
11	Tee Connector	P0340
12	Shoulder Nipples	P0341
13	Quick Connect O-Ring	PM-389
14	Valve Covers	PM-792
15	Spout Shank Cap	PM-480N
16	Fiber Washer	PM-332
17	Bottom Brass Lock Nut	PM-341
18	'HOT' Cartridge Only	P0420-SH
19	'COLD' Cartridge Only	P0420-SC
20	Shank O-Rings	PM-613



* Please specify the finish when ordering the part.
 ** Please specify option code when ordering the part.

SPOUT

Rough Installation For Spout

Hole size for the Spout and handle trim is of 1-1/4".

Turn off HOT and COLD supply lines before beginning installation.

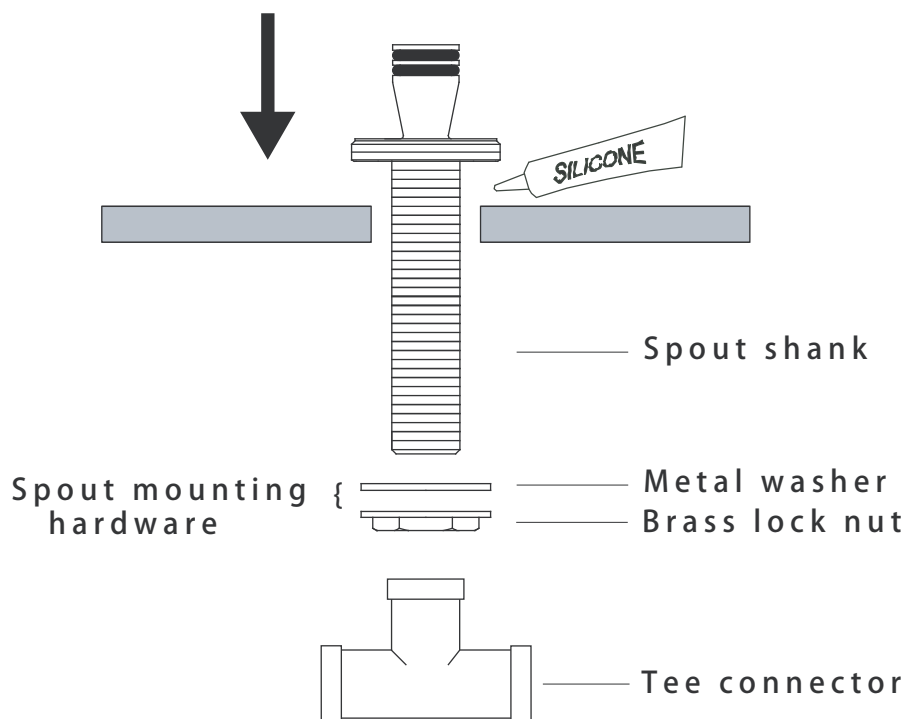
Remove tee connector and spout mounting hardware from spout shank.

Apply a ring of silicone caulking around hole designated for spout.
Do not use plumber's putty, which can damage finish as per warranty.

Find the "front here" mark, which is marked on the base, and make sure that it is facing forward. Slip the spout shank through the deck top and reattach the spout mounting hardware until secure.

Wipe away excess silicone with a wet finger or damp cloth.

Wrap the bottom threads with teflon tape and thread the tee connector back onto spout shank.



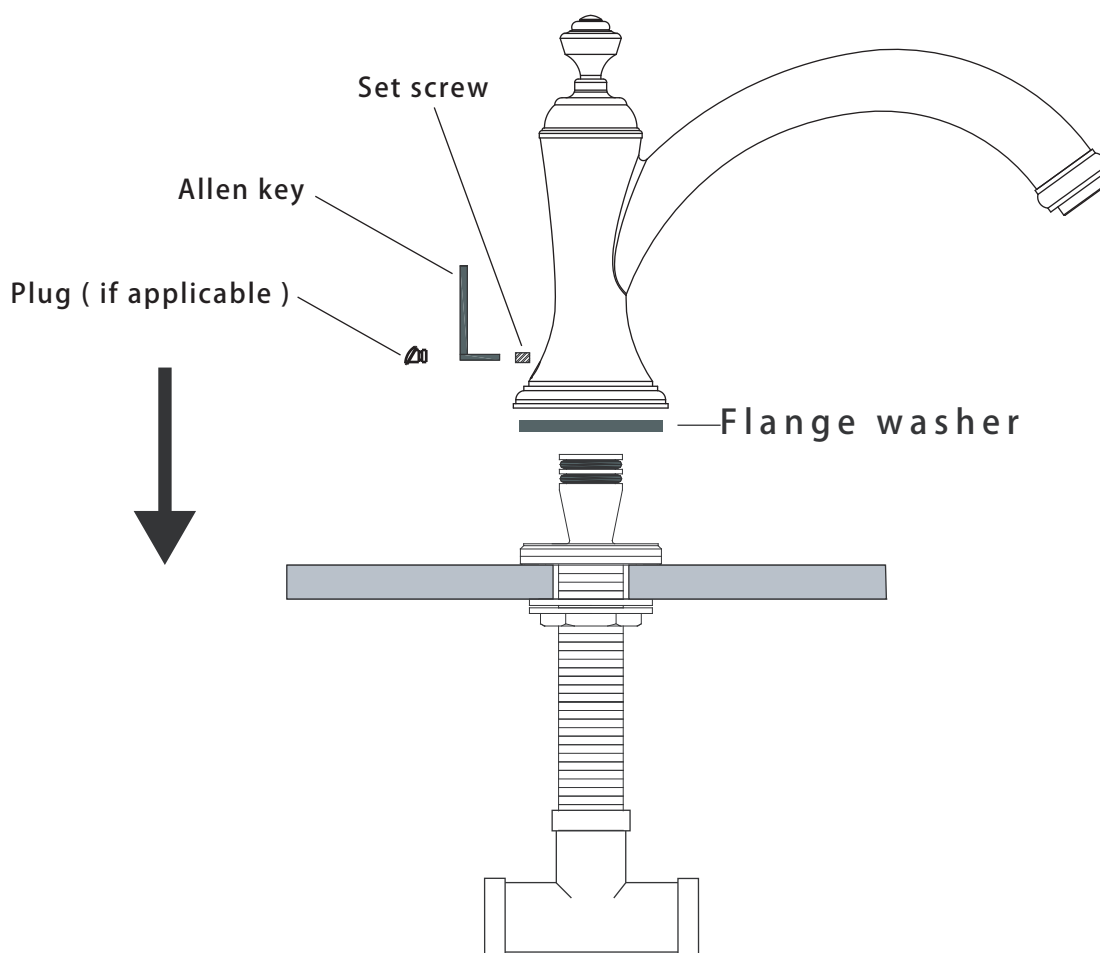
SPOUT

Spout Trim Installation

From the top of the deck, slip the spout with the flange washer onto the quick connect shank top.

Align the spout and tighten the set screw with the provided Allen key. inset plug at the back of the spout (if applicable)

Note: If the trim comes later than the rough, please keep the shank protector on the spout shank at all times to avoid damage to the unit.



HANDLE

Rough Installation For Handle

NOTE: HOT valve red is mounted to the left side. COLD valve blue is to be mounted on the right side.

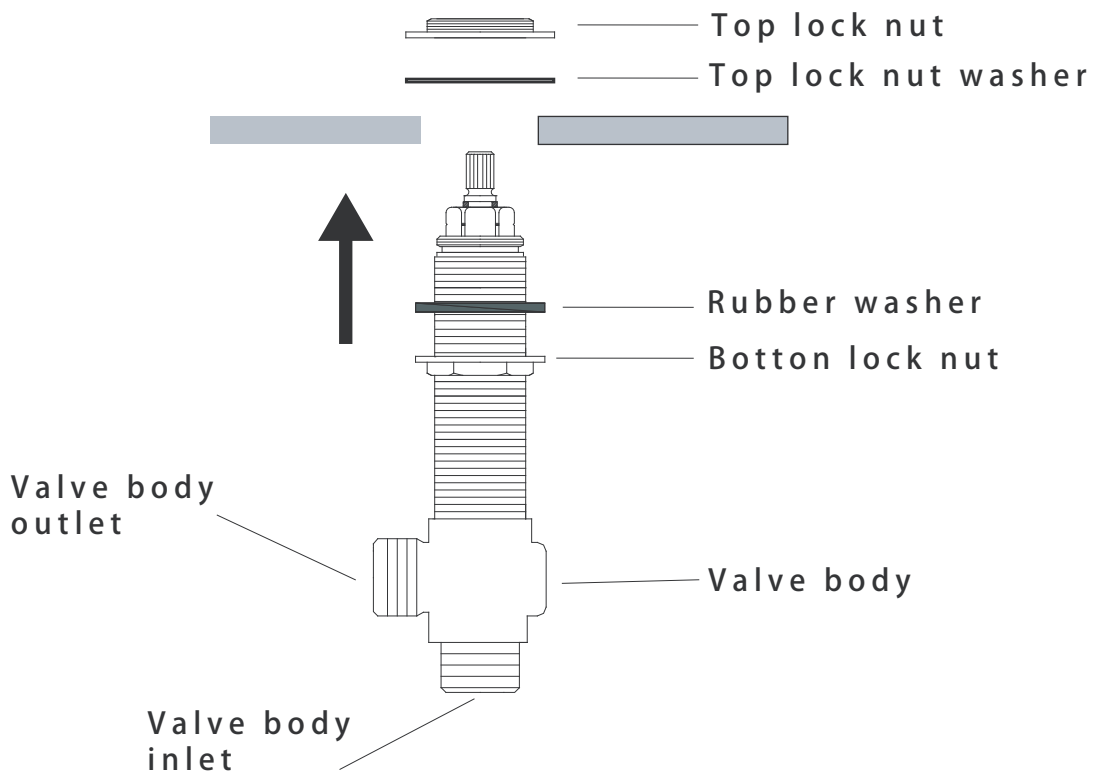
Remove the top lock nut and top lock nut washer from the valve body.

Apply a ring of silicone around the handle hole on top of the deck. DO not use plumber's putty, which can damage finish as per warranty.

Slip the valve body into the proper handle hole from underneath the tub. Thread the top lock nut and top lock nut washer back onto the valve body and tighten down securely.

From underneath, tighten the brass lock nut securely.

While tightening the valve body into place, make sure to keep the position of the valve body outlet pointed toward the tee connector.



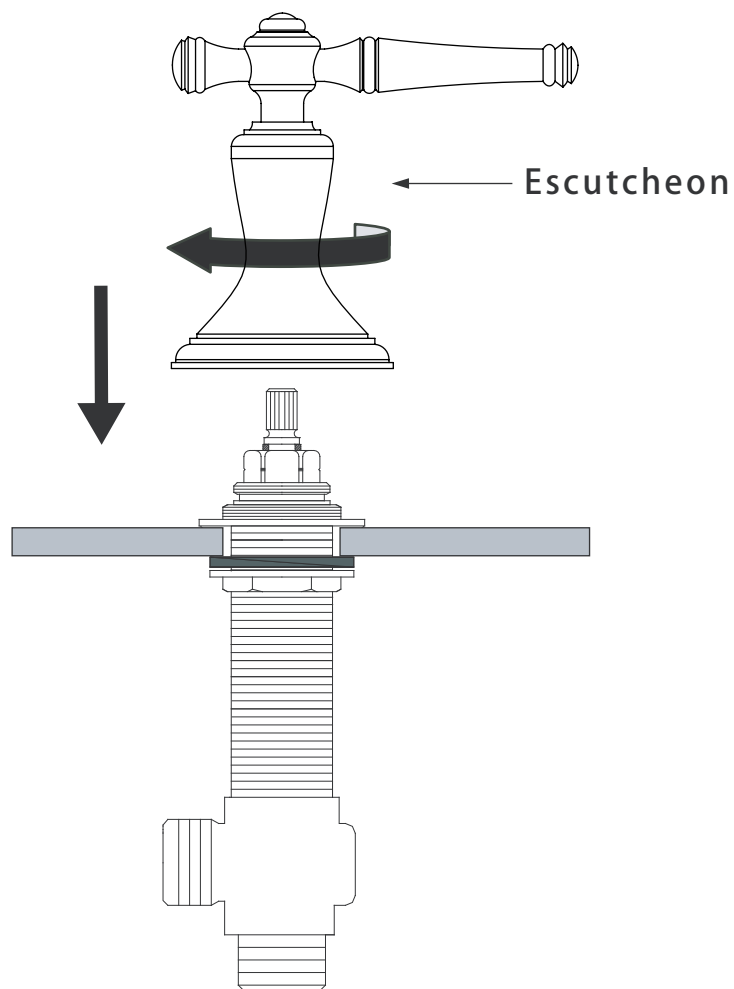
HANDLE

Handle Trim Installation

NOTE: In the OFF positions, the HOT handle lever (left) should be in the 9 o'clock position and the COLD handle lever (right) should be in the 3 o'clock position. In the ON positions, both levers should both turn towards you (6 o'clock Position) .

Fit the handle down onto the installed valve body making sure that the handle levers are in a parallel line with the spout.

Turn the escutcheon clockwise onto the valve body until tightened down securely.





LIFETIME LIMITED WARRANTY

SANTEC is committed to enhancing your bathroom experience by creating luxury products that will provide enduring satisfaction. Every effort has been made to satisfy the highest standards of design and production to create lasting peace of mind for our customers. Proof of purchase must be provided for all warranty claims, SANTEC provides the following limited warranties on our product.

LENGTH OF WARRANTY & WHO IS COVERED BY OUR WARRANTY

This warranty only extends to the original consumer purchaser.

WHAT IS COVERED BY OUR WARRANTY

1. **Finishes:** SANTEC Polished Chrome, Polished Nickel and Satin Nickel finishes carry a Lifetime Limited warranty against manufacturing defects and tarnish to the original purchaser. Custom finishes carry a ten (10) years limited warranty against manufacturing defects and tarnish to the original purchaser only. Kitchen products carry a three (3) year limited warranty.
2. **Cartridges:** Santec cartridges carry a lifetime limited warranty, with the exception of thermostatic and pressure balanced cartridges, which carry a three (3) year limited warranty against manufacturing defects to the original purchaser.
3. **Parts:** Santec parts carry a ten (10) year limited warranty against manufacturing defects, to the original purchaser. Kitchen products carry a five (5) year limited warranty.

EXCLUSIONS AND LIMITATIONS OF WARRANTY

This warranty does not cover:

1. **Drains**
2. **Crystals and/or glass**
3. Damage due to negligence, accident, abuse, improper installation, or improper maintenance such as, but not limited to: heat from soldering during installation, the use of plumber's putty, damage from tools used during installation, the use or exposure to chemicals or cleaning products either abrasive or non-abrasive, or the use of any cleaning tool or product other than a soft, clean cloth. Reverse osmosis may also shorten the life of the finish.
4. Changes in the finish or in the product due to normal wear or aging does not cover any products or parts which have been altered or used in a manner not typical for the product.
5. Loss, damages, or expense, incidental or consequential whatsoever, originating from the purchase, installation, use, repair, failure, or replacement of any SANTEC product or part, allowed by law.
6. Commercial and/or Industrial installations and use of the product.
7. This warranty does not include labor, travel charges, or any costs incurred for repair, removal, installation, servicing, diagnosing, or handling of either defective or replacement parts. Changes in the finish or in the product due to normal wear or aging does not cover any products or parts
8. Access should be provided to the roman tub valves for future service or repair to valves and piping. Under no circumstances will Santec Faucet, Inc. be liable for any costs associated with the removal of materials for future access to the tub valves or piping for service or repair.
- 9.

This warranty does not cover: damage due to negligence, accident, abuse, improper installation, or improper maintenance such as, (but not limited to): heat from soldering during installation, the use of plumbers putty, damage from tools used during installation, the use or exposure to chemical or cleaning products, abrasive or non-abrasive, or the use of any cleaning tool or product other than a soft, clean cloth. **This warranty does not cover: changes in the finish or in the product due to normal wear or again and does not cover any product or parts which have been altered or used in a manner not typical for the product.** Santec will not be held liable for damage to products caused by the freight carrier, any such claims should be made immediately with the freight carrier. This warranty does not cover any cost involved in the installation, repair, or replacement of any SANTEC product or parts. This warranty does not cover and SANTEC will not be held liable for any loss, damages, or expenses, incidental or consequential whatsoever, originating from the purchase, installation, use, repair, failure, or replacement of any SANTEC product or part, as allowed by law. The product of components of the covered product will either be repaired, refinished or replaced at the sole discretion of SANTEC. SANTEC reserves the right to examine any product claimed defective prior to any warranty claim being accepted or processed, at its sole discretion. This warranty gives you specific legal rights and you may have other rights which may vary from state to state.

Effective: 05/01/2015



FINISH CARE INFORMATION

WARNING: Do not clean your SANTEC product with ammonia (window cleaner), bleach, soaps, acids, abrasives, harsh polishes, harsh cleaners, a coarse surfaced cloth, coarse sponge, or any type of scouring pad. Doing so may ruin your faucet finish and/or void the warranty.

Thank you for making SANTEC a part of your lifestyle and luxury spa experience. Our products have been created as works of enduring quality and sophisticated design. Luxurious finishes need proper care and attention, so in order to understand how to properly clean your distinctive luxury finish, please refer to the finish care information below:

Your SANTEC product can be identified in one of two categories: clear coated finishes or non-clear coated finishes. Clear coated finishes are more scratch-sensitive and are more reactant to harsh cleaning chemicals than non-clear coated finishes. Once you have identified the specific luxury finish of your SANTEC product, please follow the important corresponding care instructions.

Living finishes are unique, are intended to change over time and are excluded from the finish warranty. Any product outdoors or in a marine environment are excluded from the finish warranty.

CLEAR COATED FINISHES

Clear Coated Finishes are as Follows:

We recommend that all faucets, drains, etc., be gently wiped dry with a soft cloth after use to avoid water spotting and water deposit build-up. A mild liquid hand soap may be used occasionally if desired. Use of a non-abrasive carnauba wax will add protection to the finish and should be used if the faucets will not be dried after use. Santec Orobrass kitchen products are clear coated. For clear coated finishes, it is recommended to clean your product weekly with a soft moist cloth.

NON-CLEAR COATED FINISHES

We recommend that all faucets, drains, etc., be gently wiped dry with a soft cloth after use to avoid water spotting and water deposit build-up. A mild liquid hand soap may be used occasionally if desired. Use of a non-abrasive carnauba wax is occasionally required and will add protection to the finish if the faucets will not be dried after use.

TO OBTAIN WARRANTY SERVICE

Please read 'WHAT IS COVERED BY OUR WARRANTY' and 'EXCLUSIONS AND LIMITATIONS OF WARRANTY' sections to understand what is and what is not covered. Please have ready the proof of purchase (original sales receipt), description of the problem, and carefully package the product or defective part with postage prepaid. Then, please contact your local SANTEC Showroom or write to SANTEC Technical Services.