

MINTA TOUCH

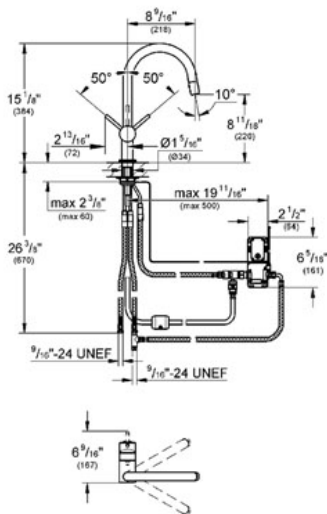
Pull-Down kitchen faucet with touch technology

MODEL # 31359

GROHE America, Inc | 200 North Gary Avenue, Suite G, Roselle, IL 60172
 Phone: +1 (800) 444-7643 | Fax: +1 (800) 225-2778 | us-customerservice@grohe.com

Pure Freude an Wasser

GROHE



Product Description:

Pull-Down kitchen faucet with touch technology

Standard Specification:

- GROHE StarLight® finish
- GROHE SilkMove® ceramic cartridge
- Touch: activation of cold water via skin contact
- SpeedClean anti-lime system
- Single hole installation
- 6 V lithium-battery supply (type CR-P2)
- CE approved
- Indication of battery status by different Impulses
- Safety shutdown circuit
- Solenoid valve
- Automatic safety stop after 60 sec.(factory set)
- Type of protection IP 44
- C-spout
- Adjustable flow rate limiter
- Swivel Spout
- Swivel area 360°
- With extractable dual spray
- Automatic returning
- Integrated non-return valve
- Locking Push Button Control - to switch from regular flow to spray
- Automatic return to aerator
- Stainless Steel Braided Flexible Supplies
- Quick installation system
- Variable Handle Positioning
- Projection 8 9/16"
- Protected against backflow
- Max Flow Rate 1.75 gpm (6.6 L/min)

Applicable Codes & Standards:

- Energy Policy Act of 1992
- NSF 61
- ASME A112.18.1/CSA B125.1
- US Federal and State material regulations
- CalGreen

Color:

- 31359 000 chrome

GROHE America, Inc | 200 North Gary Avenue, Suite G, Roselle, IL 60172
Phone: +1 (800) 444-7643 | Fax: +1 (800) 225-2778 | us-customerservice@grohe.com

□ 31359 DC0 supersteel