

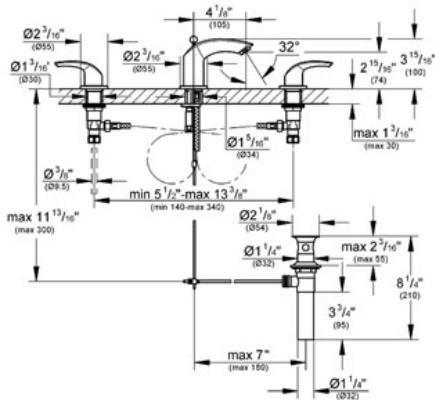
EUROSMART  
Three-hole basin mixer 1/2"  
S-Size

MODEL # 20294

GROHE America, Inc | 200 North Gary Avenue, Suite G, Roselle, IL 60172  
Phone: +1 (800) 444-7643 | Fax: +1 (800) 225-2778 | us-customerservice@grohe.com

Pure Freude an Wasser

GROHE



**Product Description:**  
Three-hole basin mixer 1/2"  
S-Size

**Standard Specification:**

- GROHE StarLight® finish
- GROHE EcoJoy® technology for less water and perfect flow
- GROHE QuickFix™ installation system with centering support
- Spout with SpeedClean-flow control
- 3/4" ceramic cartridges (90° turn)
- 1 1/4" pop-up waste set
- Pressure resistant flexible connection hoses (between spout and side valves)
- Union nut with 7/16" drilling
- Max Flow Rate 1.5 gpm at 60 psi (5.7 L/min)

**Applicable Codes & Standards:**

- Energy Policy Act of 1992
- NSF 61
- ASME A112.18.1/CSA B125.1
- US Federal and State material regulations
- EPA WaterSense®
- ICC/ANSI A117.1

**Color:**

- 20294 000 chrome
- 20294 EN0 Brushed Nickel