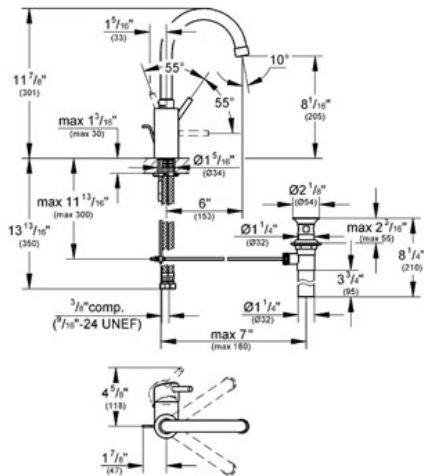


CONCETTO
Lavatory Centerset
MODEL # 32138

Pure Freude an Wasser



GROHE America, Inc | 200 North Gary Avenue, Suite G, Roselle, IL 60172
Phone: +1 (800) 444-7643 | Fax: +1 (800) 225-2778 | us-customerservice@grohe.com



Product Description:
Lavatory Centerset

Standard Specification:

- GROHE StarLight® finish
- GROHE SilkMove® ceramic cartridge
- GROHE QuickFix® rapid installation system
- Single hole installation
- Adjustable flow rate limiter
- Swivel tubular spout with stop limiter
- Flow control
- Stainless Steel Braided Flexible Supplies
- 1 1/4" pop-up waste set
- Lever attachment cover
- Optional temperature limiter ref. no. 46 375
- Max Flow Rate 1.5 gpm (5.7 L/min)

Applicable Codes & Standards:

- Energy Policy Act of 1992
- NSF 61
- ASME A112.18.1/CSA B125.1
- US Federal and State material regulations
- EPA WaterSense®
- ICC/ANSI A117.1

Color:

- 32138 001 chrome
- 32138 EN1 Brushed Nickel inf