

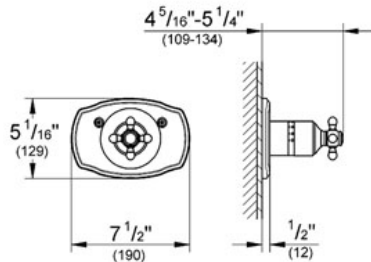
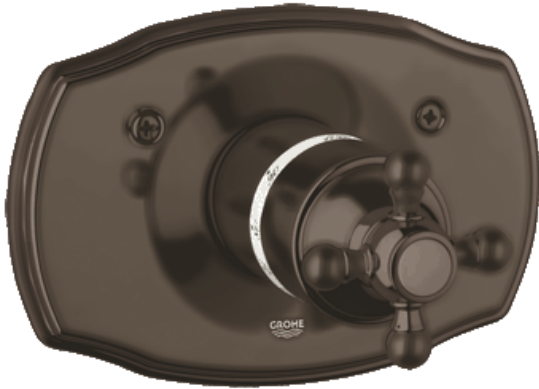
GENEVA

MODEL # 19615

Pure Freude an Wasser

GROHE

GROHE America, Inc | 200 North Gary Avenue, Suite G, Roselle, IL 60172
Phone: +1 (800) 444-7643 | Fax: +1 (800) 225-2778 | us-customerservice@grohe.com



Product Description:

Standard Specification:

Thermostat Trim

- Without concealed body
- For use with GROHTHERM Rough-In Valve 34 331 or 34 397
- Only useable with seperate shut-off valves

Applicable Codes & Standards:

- Energy Policy Act of 1992
- ASME A112.18.1/CSA B125.1

Color:

- 19615 000 chrome
- 19615 BE0 Sterling inf
- 19615 EN0 Brushed Nickel
- 19615 ZB0 Oil Rubbed Bronze