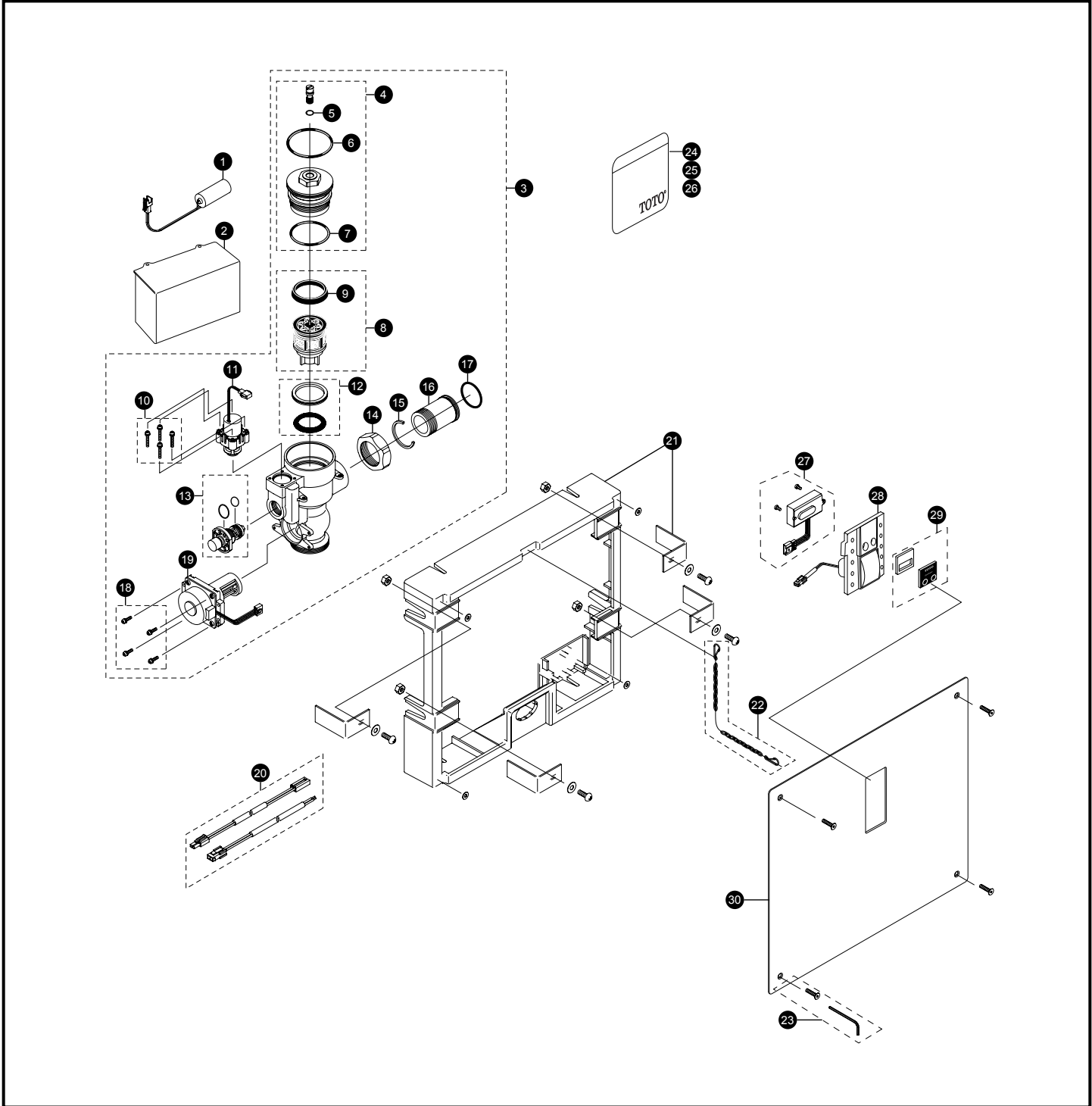


# TET2LN#SS Series

TET2LN31#SS  
TET2LN32#SS  
TET2LN33#SS  
TET2LN#SS

## EcoPower® Sensor High Efficiency Toilet Flush Valve Concealed (14" x 12") - 1.28 Gpf Hydro-Power Charge



# TET2LN#SS Series

TET2LN31#SS  
TET2LN32#SS  
TET2LN33#SS  
TET2LN#SS

## EcoPower® Sensor High Efficiency Toilet Flush Valve Concealed (14" x 12") - 1.28 Gpf Hydro-Power Charge

Item	Part	Description	Item	Part	Description
1	THP3053	Back-Up Battery	<b>Vacuum Breaker Sets</b>		
2	TH559EDV548	Toilet Valve Controller	VB13RB-31		Concealed - Back Spud (1-1/2" Outlet)
3	TH559EDV557	HET Valve Body Assembly	VB9RB-32		Concealed - Top Spud (1-1/2" Outlet)
4	TH559EDV507	Valve Cap Assembly (Toilet 1.6/1.28 GPF)	VB13RB-33		Concealed - Back Spud Floor Mount (1-1/2" Outlet)
5	TH305SV111	O-Rings (Cap Screw) (10 Pieces)	<b>Note:</b> For additional information, refer to the individual vacuum breaker parts sheets.		
6	TH305SV120	O-Rings (Valve Cap) (10 Pieces)			
7	TH305SV112	O-Rings (Valve Guide) (10 Pieces)			
8	TH323V103R	Piston Assembly (1.6/1.28 GPF)			
9	TH305SV103	U-Packing (For Piston) (10 Pieces)			
10	TH559EDV301	Double Sems Screws M3 (4 pieces)			
11	TH559EDV510	Solenoid Unit & Diaphragm Assembly			
12	TH321	Seal Washer Kit			
13	TH559EDV558	Manual Flushing Button			
14	TH305SV113	Nut			
15	TH305SV105	Locking Rings (10 Pieces)			
16	TH305SV114	Tail Piece			
17	TH305SV106	O-Rings (Tail Piece) (10 Pieces)			
18	TH559EDV505	Double Sems Screws M3 (4 pieces)			
19	TH559EDV503	Hydro-Power Generator			
20	TH559EDV556	Extension Wire Set			
21	TH559EDV341	Wall Frame			
22	TH559EDV345	Chain Set			
23	8HU5019	4 Vandal Resist Screws With Wrench			
24	0EU5160	1.28 GPF Water Saving Sticker (English)			
25	0EU3017	1.28 GPF Water Saving Sticker (Spanish)			
26	0EU3015	1.28 GPF Water Saving Sticker (French)			
27	TH559EDV550	Sensor Controller & Screws Set			
28	TH559EDV552	Touch Button Assembly Unit			
29	TH559EDV553	Cover Glass			
30	TH559EDV554	Big Cover Plate			

### Product Number Explanations

#### Flush Valve

(T) Fitting  
(E) Electronic  
(T) Toilet 1.28  
(2) Concealed Large Plate  
(L) HET Dynamo (Hydro Generator)  
(N) Neutral Rough-In  
(31) 1-1/2" Outlet\_Back Spud  
(32) 1-1/2" Outlet\_Top Spud  
(33) 1-1/2" Outlet\_Back Spud Floor Mount  
(#SS) Stainless Finish