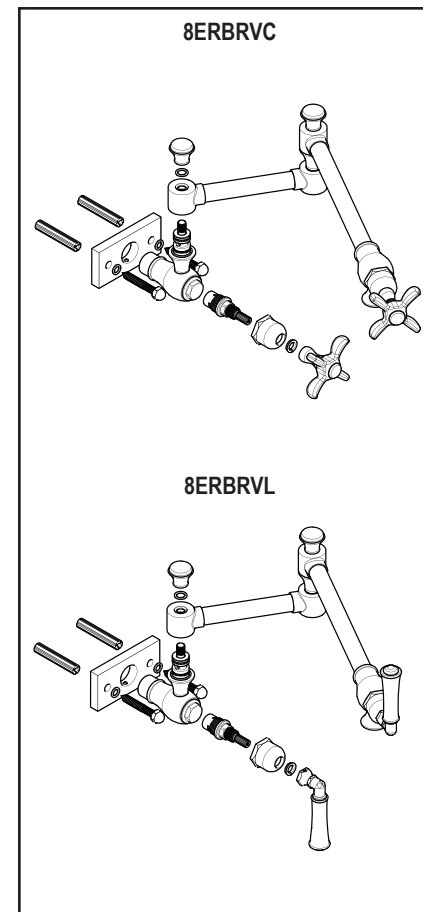
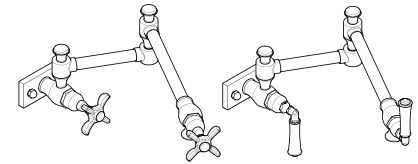


WALL MOUNTED POT FILLER

MODEL 8ERBRVC or L

If you need assistance with installation, replacement parts or have any questions regarding your Rubinet product, please call a Customer service representative at: 905-851-6781 toll free 1-800-461-5901 or visit www.rubinet.com



BEFORE YOU BEGIN

READ ALL DIRECTIONS PRIOR TO INSTALLATION. ANY ALTERATIONS MADE TO THE CARTRIDGES AND FAILURE TO FOLLOW THESE INSTRUCTIONS MAY CAUSE DAMAGE OR IMPROPER INSTALLATION WHICH WILL NULLIFY THE WARRANTY.

- Observe and adhere to all local building and plumbing codes.
- Shut off main water supply.
- Finished wall refers to the ultimate finished surface, Tile, Marble etc.
- It is recommended that the pipes be flushed clean prior to installation, in order to avoid problems with debris later.
- This Pot Filler is designed to be used in close proximity to or directly above a stove top. **The main consideration therefore is what size is your largest pot and how high off the surface of the stove top to mount the Pot Filler.** The standard height of a counter top is 36" a stove top is generally 2" above that so mount the Wall Plate 16" above the stove top for a total height of 54" from the floor. Allow 8" either side of the Wall Plate for the arm to swing. **Plan ahead!**

SPECIFICATIONS

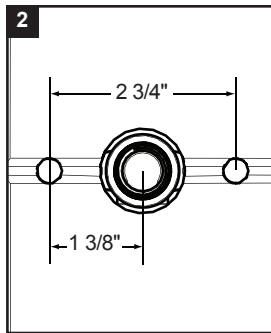
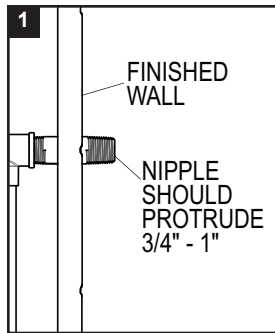
- All brass construction
- Two handle wall-mounted
- Adjustable quarter turn ceramic disc cartridges
- 1/2" NPT connections
- 2.2 gpm flow rate at 60 psi

REMOVAL OF FAUCET:

Always turn the water supply **off** before removing the existing faucet or disassembling a valve. Open both faucet handles to relieve water pressure and to ensure that the water has been successfully turned off.

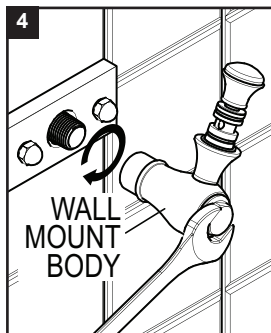
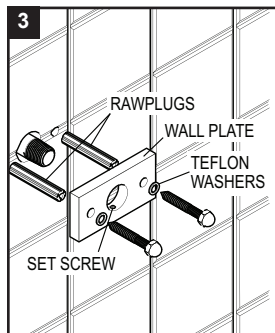
CARE OF FAUCET:

The use of warm water and a soft cloth is all that is required to clean Rubinet products. The patina of our living finishes (Oil Rubbed Bronze & Tuscan Brass) will change as a result of normal use. Applying Mineral Oil on occasion will create a softer look, subtle color changes and character.



Rough-In plumbing should ensure that the 1/2" NPT Nipple (not supplied) protrude not less than 3/4" and not more than 1" from the Finished Wall.

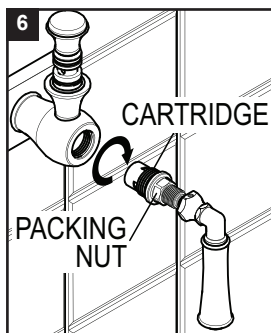
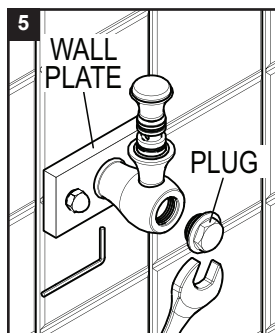
Drill two 7/16" holes 1 3/8" either side of the NPT Nipple and insert the two Rawplugs supplied.



Assemble the Plate to the wall as shown in Fig. 3 with the Set Screw hole at the bottom.

Don't forget the two Teflon washers, these protect the plate from scratching by the Acorn Nuts.

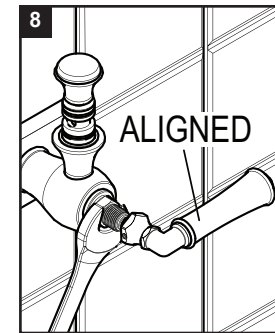
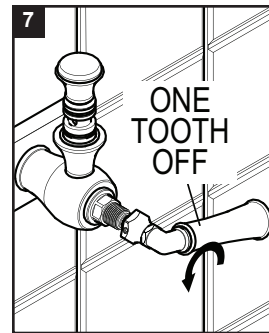
Screw the Wall Mount Body on the Nipple and align vertically as shown in Fig. 5 using a 21MM wrench on the plug provided.



Secure the assembly by tightening the Set Screw on the underside of the Wall Plate with the Allen Key provided and remove the Plug.

Loosen the Packing Nut on the supplied Cartridge - two full turns should be sufficient. Insert the cartridge in the Wall Mount Body.

Place one of the Handles on the spline of the Cartridge and screw it into the Wall Mount Body until you feel **noticeable** resistance and stop.

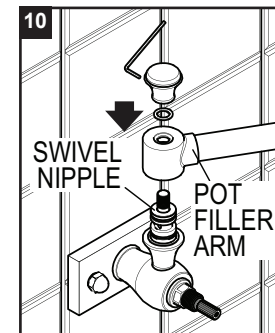
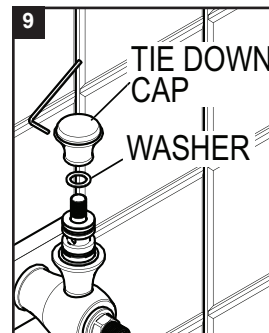


The Cartridge will be in the **OFF** position, turn it **ON**.

Remove the Handle and replace it close to but one tooth off the **ON** position as shown in Fig.7.

Gently force the Handle (unscrew the cartridge) to the desired **ON** alignment. This adjustment should not be more than 25°.

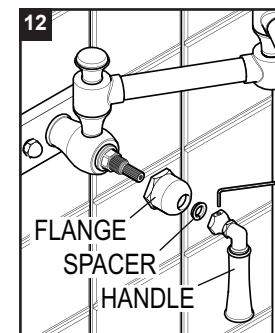
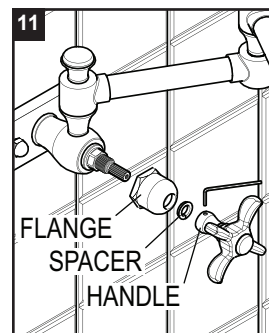
Tighten the Packing Nut using a 17MM wrench.



Loosen the Set Screw in the Tie Down Cap and remove the Cap. Then remove the **small** Teflon Washer only. Leave the larger Washer on top of the Swivel Nipple.

Carefully assemble the Pot Filler Arm as shown taking care not to tear the 'O' Rings on the Swivel Nipple.

Now replace the **small** Teflon Washer over the exposed threads then screw on the Tie Down Cap and secure it by re-tightening the Set Screw.



Screw the Flange onto the Cartridge as far as it will go, then fit the Teflon Spacer into the Flange as shown. Make sure the Cartridge is in the **OFF** position and assemble the Handle accordingly and secure by tightening the Set Screw with the Allen Key provided.