



D454542

D454542

SPECIFICATIONS

COMO™ Single Handle Pull-Down Kitchen Faucet

Model

D454542

Description

- 16 7/8" high swivel spout, 8 7/8" spout length
- Spout swivelable 360 degree
- Ceramic disc valve provide a tight seal, ensuring durability over time
- 2- function spray/aerated stream
- SnapBack™ retraction system
- Intuitive weight design
- Single hole mount
- Hassle free hose connections

Standards



NSF/ANSI 372

- NSF/ANSI 372
- ASME A112.18.1M/A112.18.1

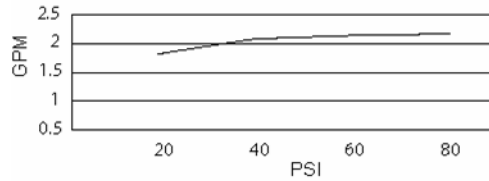


- ADA Accessibility Guidelines for Buildings and Facilities 4.27.4 Controls and Mechanisms

Model

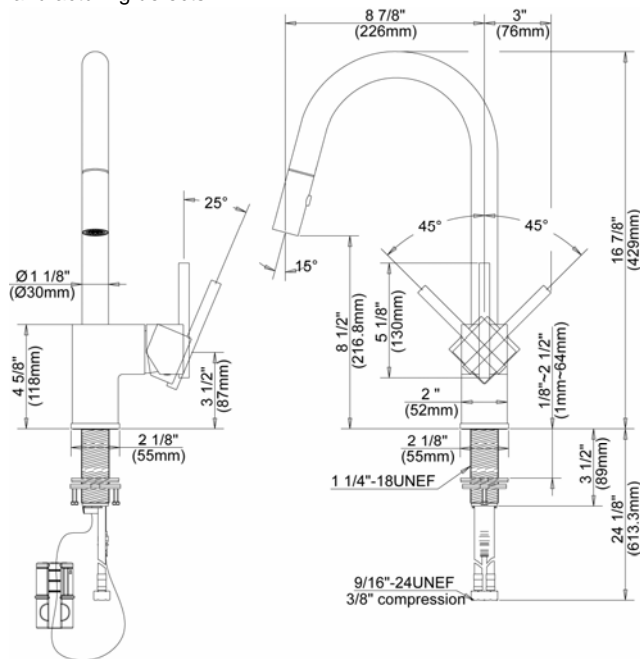
Danze products are covered by a manufacturer's limited "lifetime" warranty for manufacturing defects.

Flow Rate



Finishes Available

- Chrome
- Other: Refer to Price List for additional finish



Submittal Information:

Job Name: _____

Location: _____

Contractor: _____

Contact #: _____