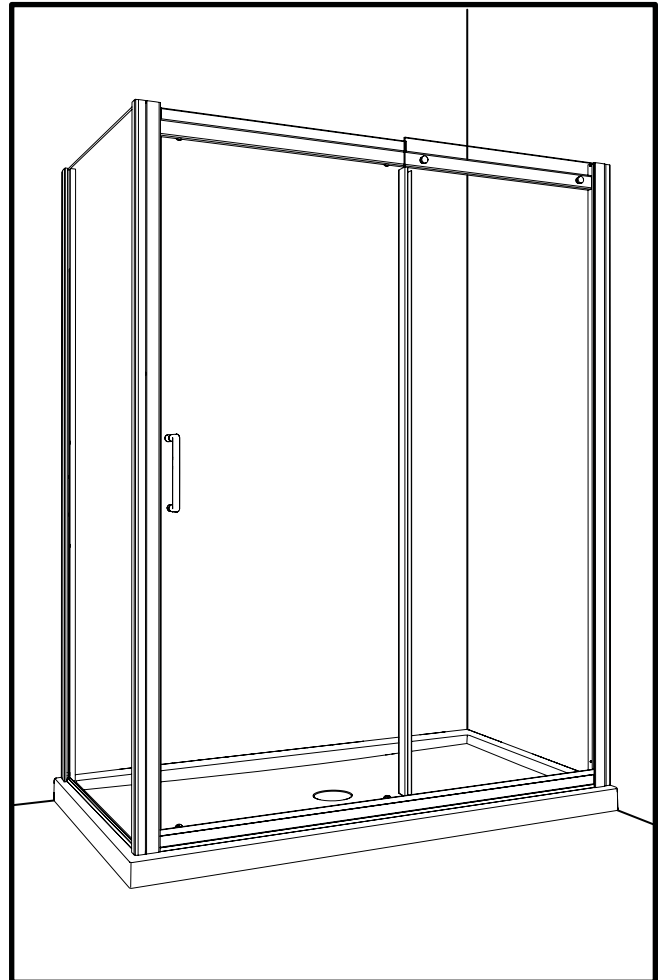
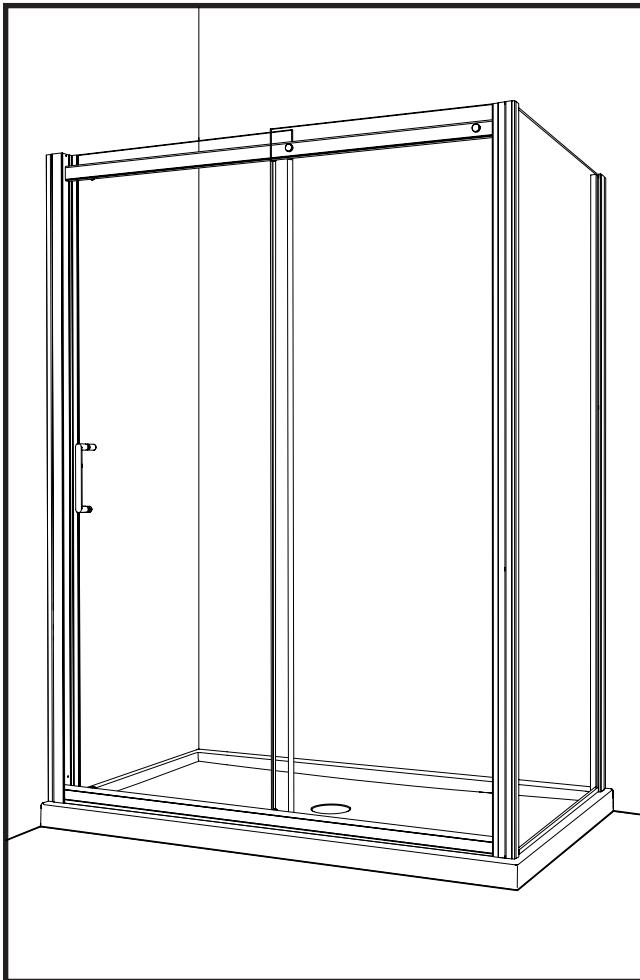


# **INSTRUCTION MANUAL - GUIDE D'INSTALLATION**

## **SH002**



Please keep this manual and product code number for future reference and for ordering replacement parts if necessary.

***Veillez conserver ce manuel et le code de produit pour des références futures, et au besoin, la commande de pièces de rechange.***

#### GENERAL INSTRUCTIONS

- Read this manual carefully and completely before proceeding.
- It is recommended that you wear safety glasses at all times during the installation.

**En**

#### INSTRUCTIONS GÉNÉRALES

- Lire attentivement et complètement le manuel d'installation avant de procéder.
- Il est recommandé de porter des lunettes de sécurité en tout temps lors de l'installation.

**Fr**

#### INSTALLATION OVER CERAMIC TILES

- If your shower door is to be installed over ceramic tiles, the tiles should lay completely under the wall jamb.
- Silicone should be used to seal the gap where the ceramic tiles meet the fixed panel.

#### INSTALLATION SUR LES TUILES EN CÉRAMIQUE

- Si votre porte de douche doit être installée sur une bordure en céramique, le jambage doit reposer complètement sur cette dernière.
- Le calfeutrage doit être appliqué sur le côté extérieur de la douche où le panneau fixe rencontre la bordure en céramique.

#### NOTICE

- Caulking: no sealant is required inside the shower, unless otherwise stated.
- Some models are equipped with clear sealing gaskets.

#### NOTE

- Calfeutrage: aucun scellant n'est nécessaire à l'intérieur de la douche.
- Certains modèles sont dotés de joints d'étanchéité clairs.

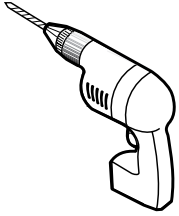
#### CARE FOR YOUR SHOWER DOOR

- Never use scouring powder pads or sharp instruments on metal pieces or glass panels. An occasional wiping down with a mild soap diluted in water is all that is needed to keep the panels and aluminum parts looking new.
- We recommend wiping the glass panels with a squeegee after each use.

#### L'ENTRETIEN DE VOTRE DOUCHE

- Ne jamais utiliser de poudre ou de tampon à récurer, ni d'instrument tranchant sur les parties en métal ou en verre. De temps à autre, il suffit de nettoyer la porte avec une solution d'eau et un détergent doux pour conserver l'aspect neuf des panneaux de verre et du cadre en aluminium.
- Nous recommandons de passer une raclette de douche sur les panneaux de verre après chaque utilisation.

## TOOLS REQUIRED / OUTILS REQUIS



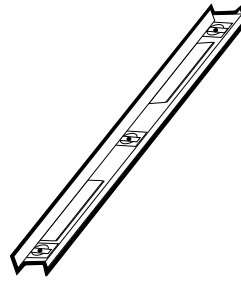
**DRILL**  
PERCEUSE



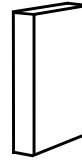
**1/4" & 1/8" DRILL BITS**  
MÈCHES 1/4" & 1/8"



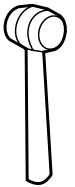
**PENCIL**  
CRAYON



**LEVEL**  
NIVEAU



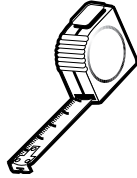
**BLOCK**  
BLOC



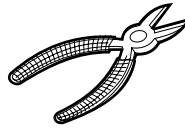
**MALLET**  
MAILLET



**SCREWDRIVER**  
TOURNEVIS



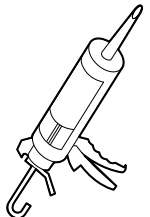
**TAPE MEASURE**  
RUBAN À MESURER



**CUTTING PLIERS**  
PINCES COUPANTES



**LONG NOSE LOCKING PLIERS (X3)**  
PINCES SERRE ÉTAU (X3)

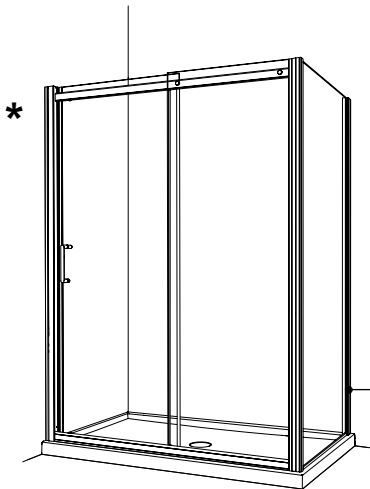


**SILICONE**  
SCCELLANT

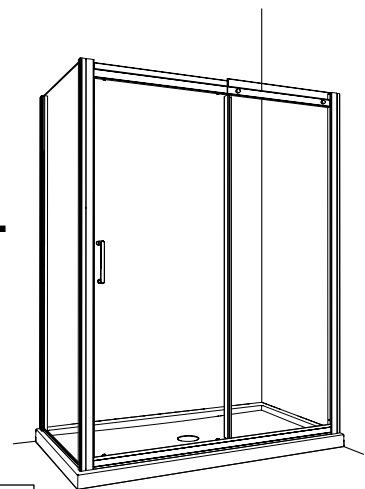
\* Use a 1/4" drill bit when drilling into ceramic tiles

\* Utiliser une mèche de 1/4" pour percer des tuiles en céramique.

## POSSIBLE CONFIGURATIONS / CONFIGURATIONS POSSIBLES

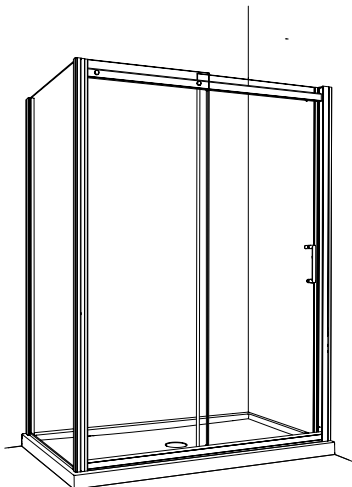


**CW-L**

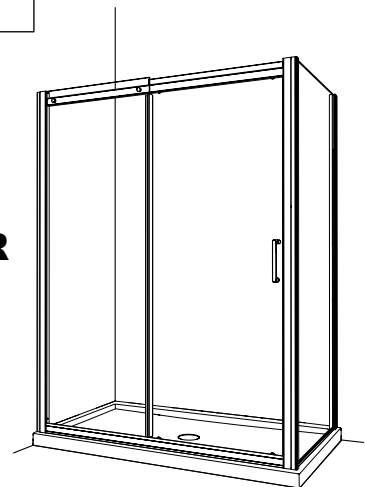


**CRP-L**

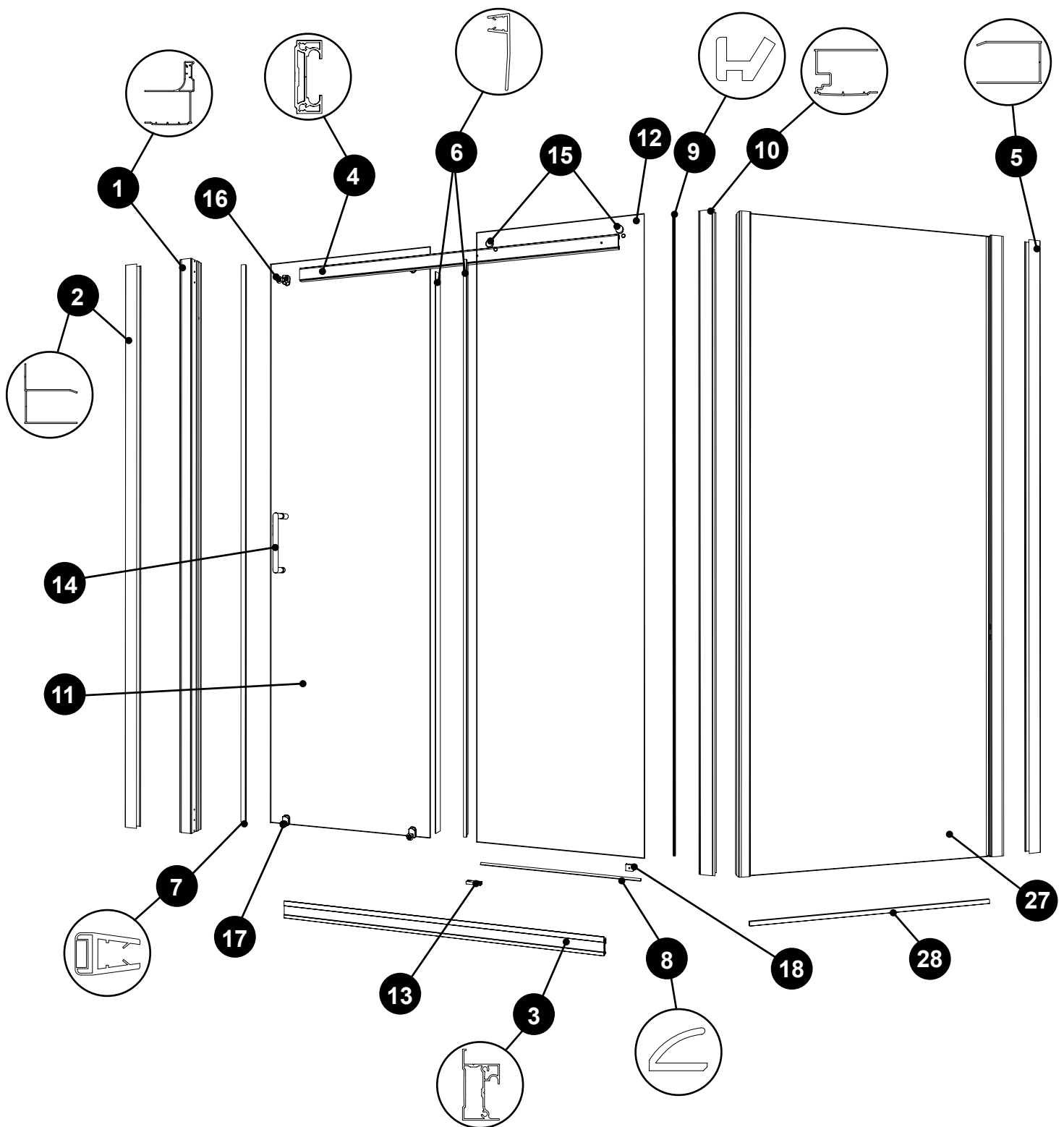
\* This configuration illustrated in this manual.  
\* Cette configuration est illustrée dans ce manuel.



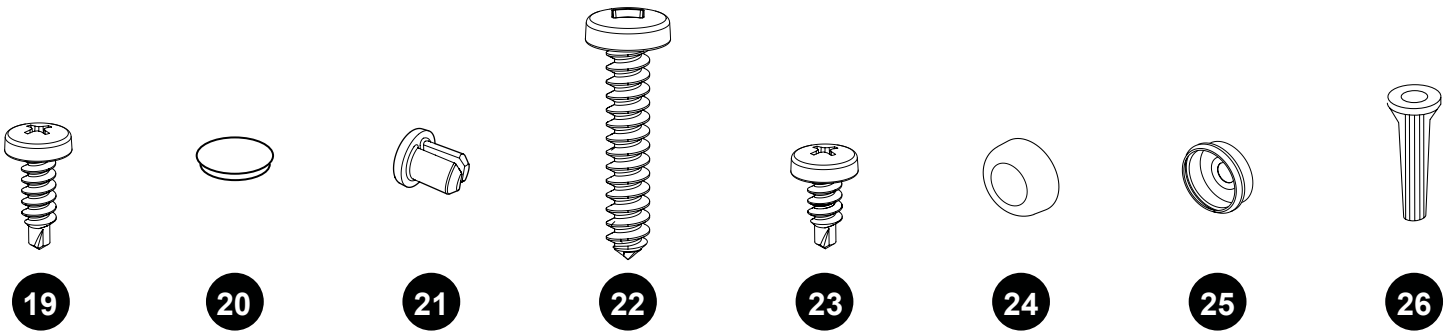
**CW-R**



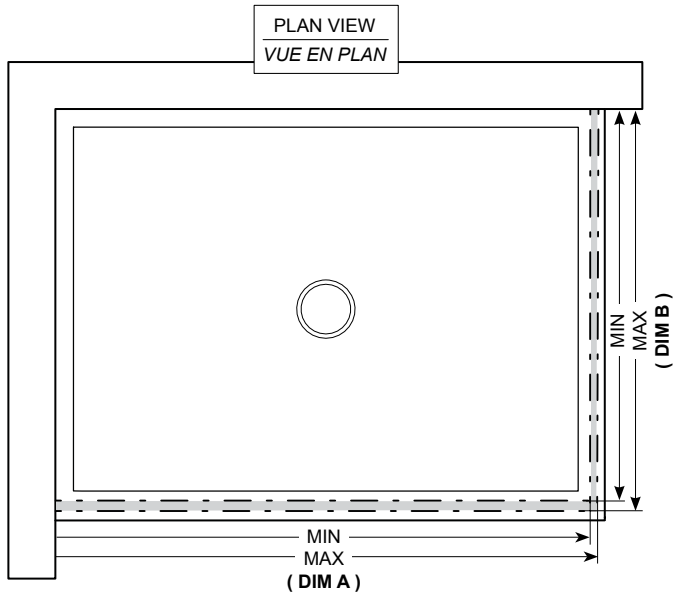
**CRP-R**



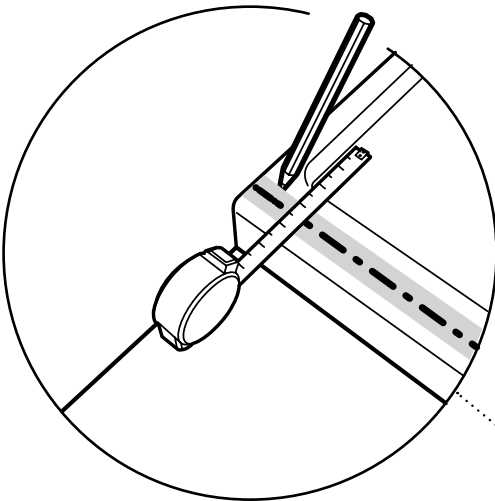
# PARTS AND HARDWARE LISTING / LISTE DES PIÈCES ET QUINCAILLERIE



ITEM	PARTS AND HARDWARE / PIÈCES ET QUINCAILLERIE	QTY
1	MAGNETIC EXPANDER WITH MAGNET / EXTENSEUR MAGNÉTIQUE AVEC AIMANT	1
2	WALL JAMB WITH FLANGE / JAMBAGE AVEC BRIDE	1
3	BOTTOM RAIL / RAIL INFÉRIEUR	1
4	TOP RAIL / RAIL SUPÉRIEUR	1
5	WALL JAMB / JAMBAGE	1
6	SIDE GASKET / JOINT LATÉRAL	2
7	MAGNETIC GASKET / JOINT MAGNÉTIQUE	1
8	BOTTOM GASKET / JOINT INFÉRIEUR	1
9	EXTERIOR GASKET / JOINT EXTÉRIEUR	1
10	EXPANDER / EXTENSEUR	1
11	DOOR PANEL / PANNEAU DE PORTE	1
12	FIXED PANEL / PANNEAU FIXE	1
13	BOTTOM SUPPORT / SUPPORT DU BAS	1
14	HANDLE BAR / POIGNÉE	1
15	GLASS FASTENER / FIXATION DE VERRE	2
16	TOP ROLLER / ROULETTE SUPÉRIEUR	2
17	BOTTOM ROLLER / ROULETTE INFÉRIEUR	2
18	STOPPER / BUTOIR	1
19	ROUND HEAD SELF DRILLING SCREW / VIS RONDE AUTO-PERÇANTE	2
20	GLASS SUPPORT CAP / CAPUCHON DU SUPPORT DE VERRE	1
21	HOLE PLUG / BOUCHON DE TROU	4
22	PAN HEAD SCREWS / VIS À TÊTE PAN	14
23	ROUND HEAD SELF DRILLING SCREW / VIS RONDE AUTO-PERÇANTE	9
24	SCREW CAP / CAPUCHON COUVRE-VIS	12
25	BACK SCREW CAP / L'ARRIÈRE DU CAPUCHON COUVRE-VIS	12
26	WALL PLUG / CHEVILLE	6
27	RETURN PANEL / PANNEAU DE RETOUR	1
28	ALUMINUM "U" CHANNEL / PROFILÉ "U" EN ALUMINIUM	1

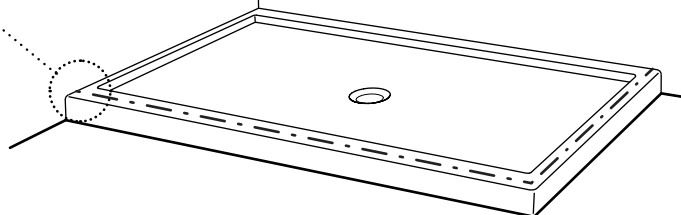


MODEL MODÈLE	DIM A = FRONT OPENING OUVERTURE DU DEVANT		DIM B = SIDE OPENING OUVERTURE DU CÔTÉ	
	MIN	MAX	MIN	MAX
4832	45 <sup>3</sup> / <sub>16</sub> " 115 cm	46 <sup>5</sup> / <sub>16</sub> " 118 cm	28 <sup>11</sup> / <sub>16</sub> " 73 cm	29 <sup>13</sup> / <sub>16</sub> " 76 cm
4834	45 <sup>3</sup> / <sub>16</sub> " 115 cm	46 <sup>5</sup> / <sub>16</sub> " 118 cm	30 <sup>11</sup> / <sub>16</sub> " 78 cm	31 <sup>13</sup> / <sub>16</sub> " 81 cm
4836	45 <sup>3</sup> / <sub>16</sub> " 115 cm	46 <sup>5</sup> / <sub>16</sub> " 118 cm	32 <sup>11</sup> / <sub>16</sub> " 83 cm	33 <sup>13</sup> / <sub>16</sub> " 86 cm
6032	57 <sup>3</sup> / <sub>16</sub> " 145 cm	58 <sup>5</sup> / <sub>16</sub> " 148 cm	28 <sup>11</sup> / <sub>16</sub> " 73 cm	29 <sup>13</sup> / <sub>16</sub> " 76 cm
6034	57 <sup>3</sup> / <sub>16</sub> " 145 cm	58 <sup>5</sup> / <sub>16</sub> " 148 cm	30 <sup>11</sup> / <sub>16</sub> " 78 cm	31 <sup>13</sup> / <sub>16</sub> " 81 cm
6036	57 <sup>3</sup> / <sub>16</sub> " 145 cm	58 <sup>5</sup> / <sub>16</sub> " 148 cm	32 <sup>11</sup> / <sub>16</sub> " 83 cm	33 <sup>13</sup> / <sub>16</sub> " 86 cm
7232	69 <sup>3</sup> / <sub>16</sub> " 176 cm	70 <sup>5</sup> / <sub>16</sub> " 178 cm	28 <sup>11</sup> / <sub>16</sub> " 73 cm	29 <sup>13</sup> / <sub>16</sub> " 76 cm
7234	69 <sup>3</sup> / <sub>16</sub> " 176 cm	70 <sup>5</sup> / <sub>16</sub> " 178 cm	30 <sup>11</sup> / <sub>16</sub> " 78 cm	31 <sup>13</sup> / <sub>16</sub> " 81 cm
7236	69 <sup>3</sup> / <sub>16</sub> " 176 cm	70 <sup>5</sup> / <sub>16</sub> " 178 cm	32 <sup>11</sup> / <sub>16</sub> " 83 cm	33 <sup>13</sup> / <sub>16</sub> " 86 cm



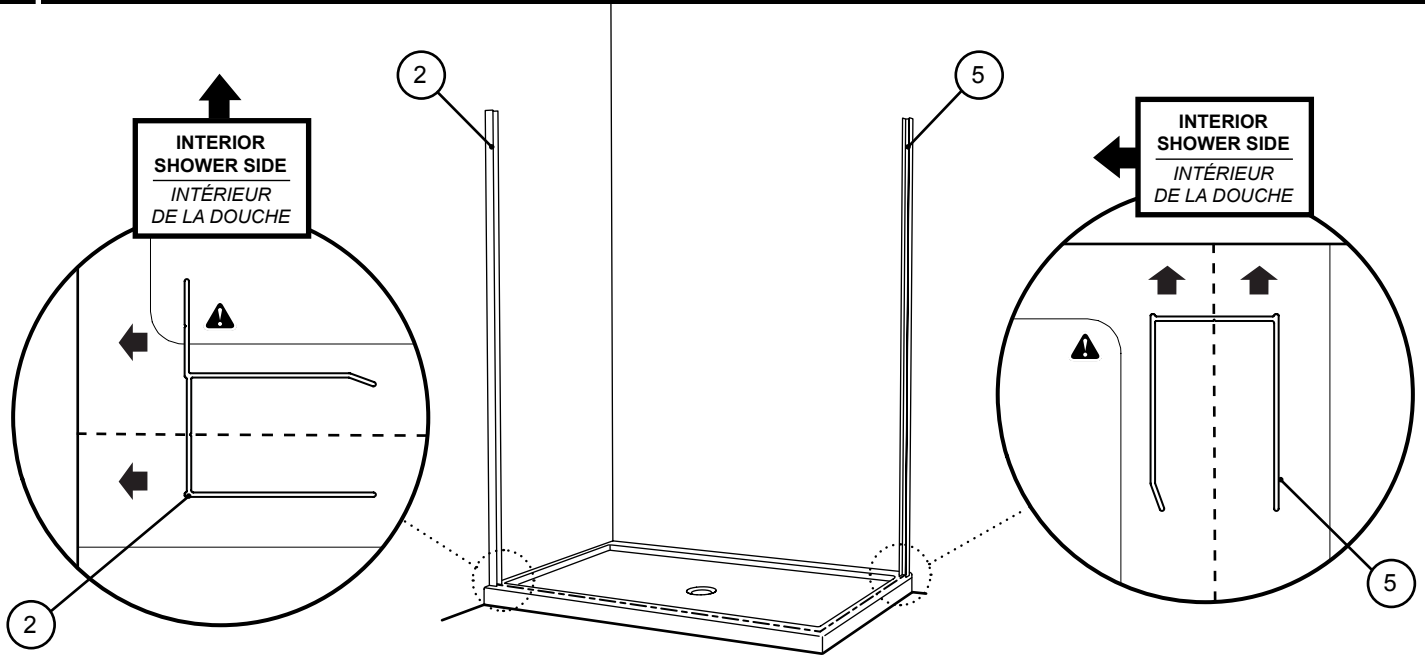
THE INSTALLATION SHOWN IS BASED ON PLUMB FINISHED WALLS AND A LEVELLED BASE. IF THESE CONDITIONS ARE NOT MET, PLEASE ADJUST ACCORDINGLY.

L'INSTALLATION ILLUSTRÉE EST BASÉE SUR DES MURS FINIS D'APLOMB ET UNE BASE DE DOUCHE NIVELÉE. SI CES CONDITIONS NE SONT PAS PRÉSENTES, VEUILLEZ AJUSTER EN CONSÉQUENCE.



3

PLACE CENTER OF WALL JAMB ON THE LINE / PLACER LE CENTRE DU JAMBAGE SUR LA LIGNE



THIS WALL JAMB GOES IN THE FRONT

CE JAMBAGE VA EN AVANT

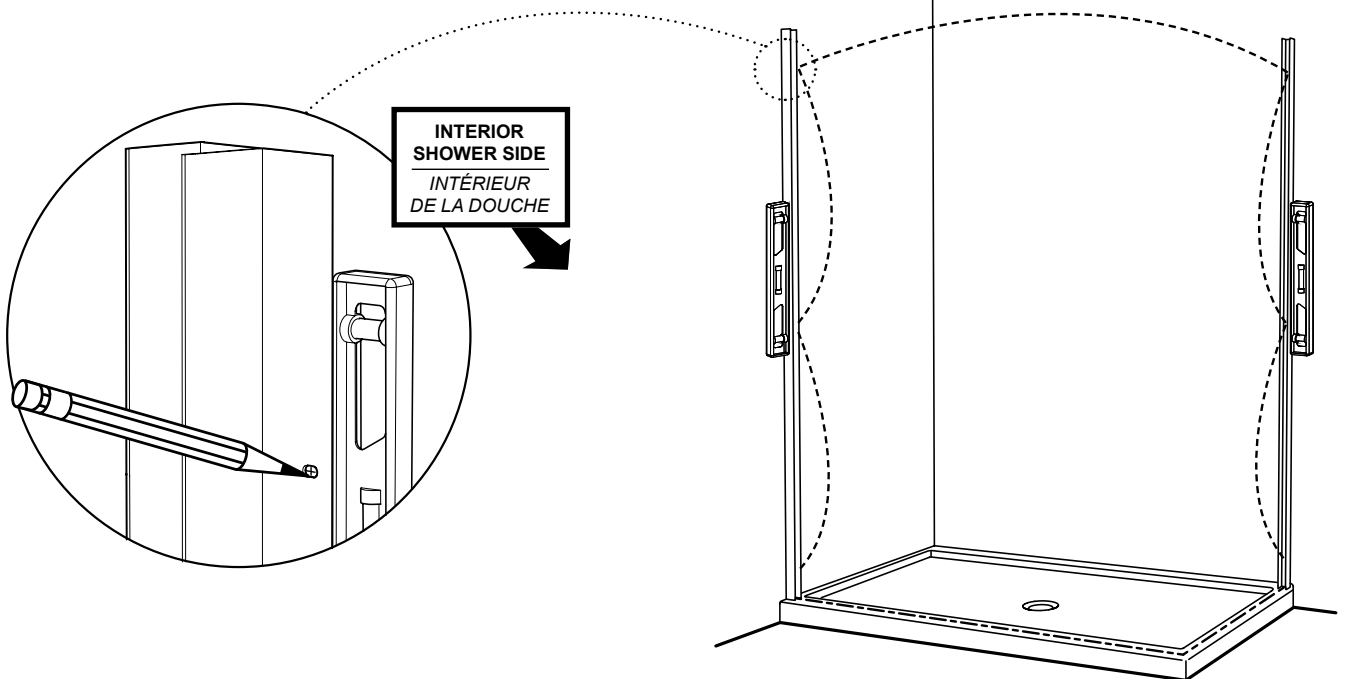


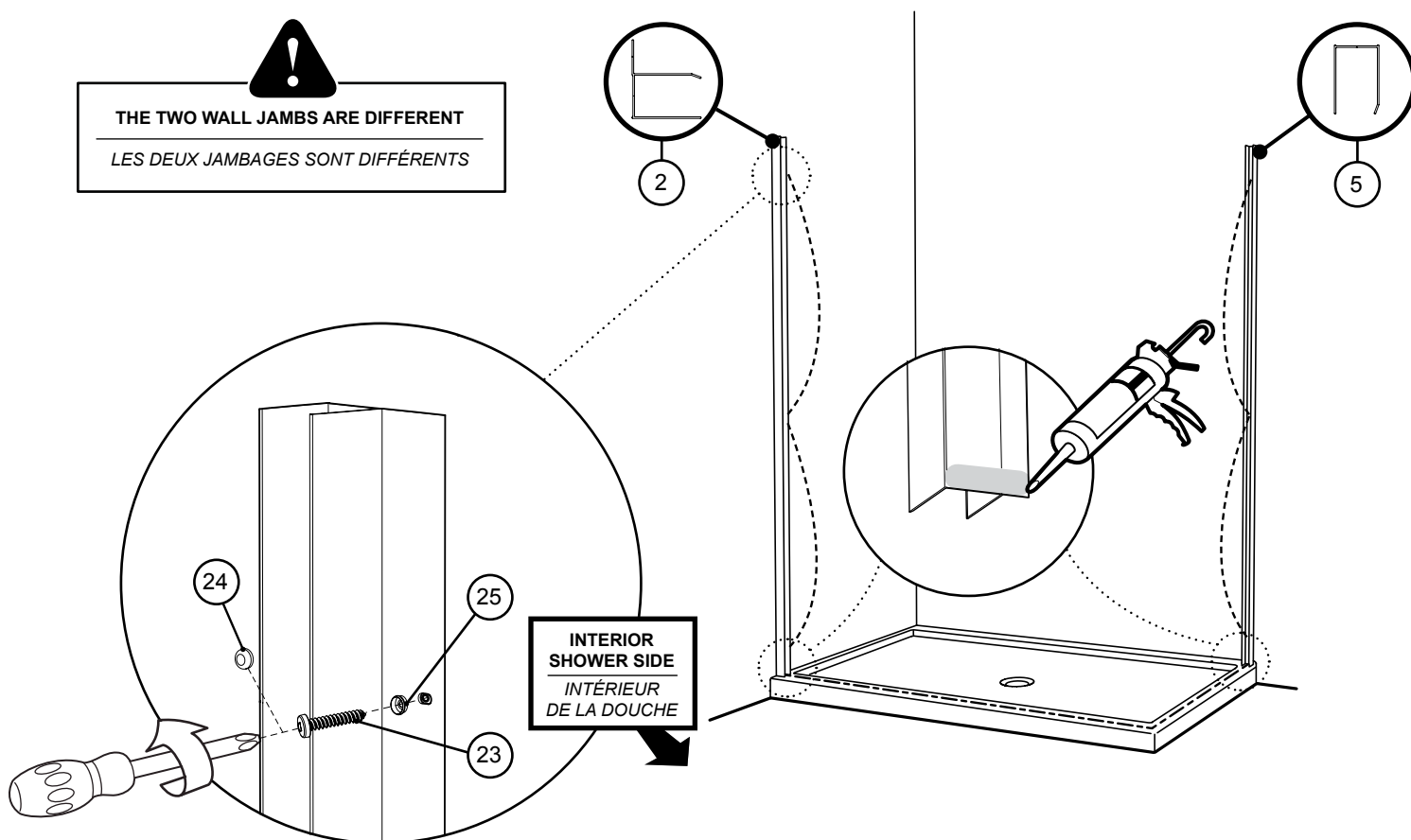
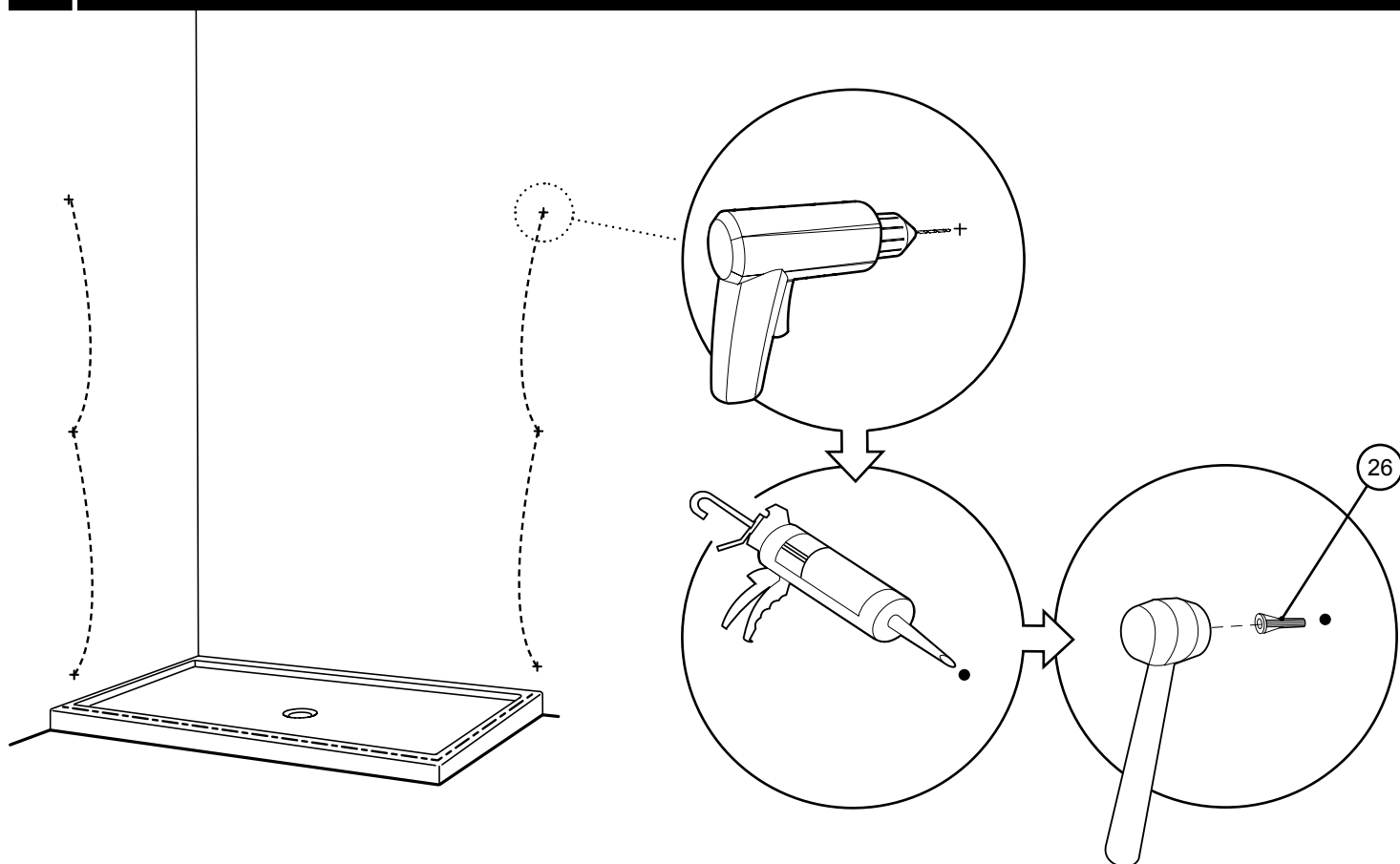
THIS WALL JAMB GOES ON THE RETURN PANEL SIDE

CE JAMBAGE VA SUR LE CÔTÉ DU PANNEAU DE RETOUR

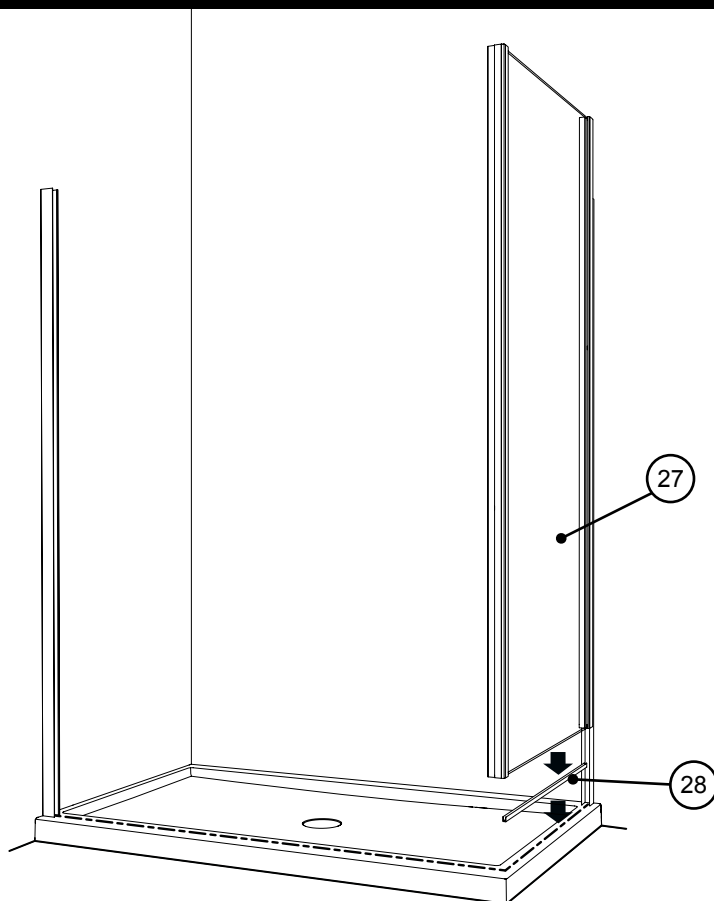
4

MARK WALL JAMB HOLES / MARQUER LES POINTS DE PERÇAGE



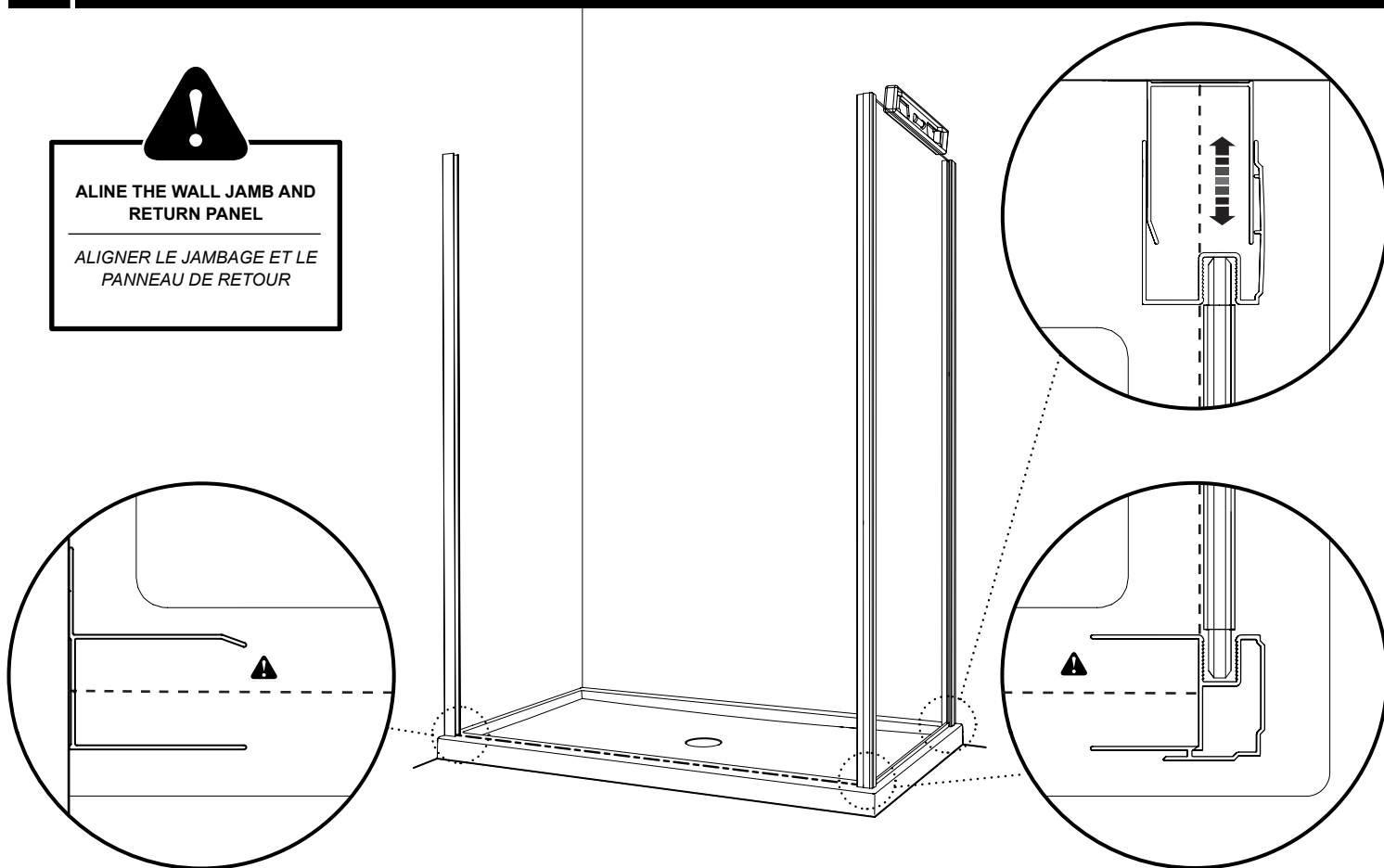


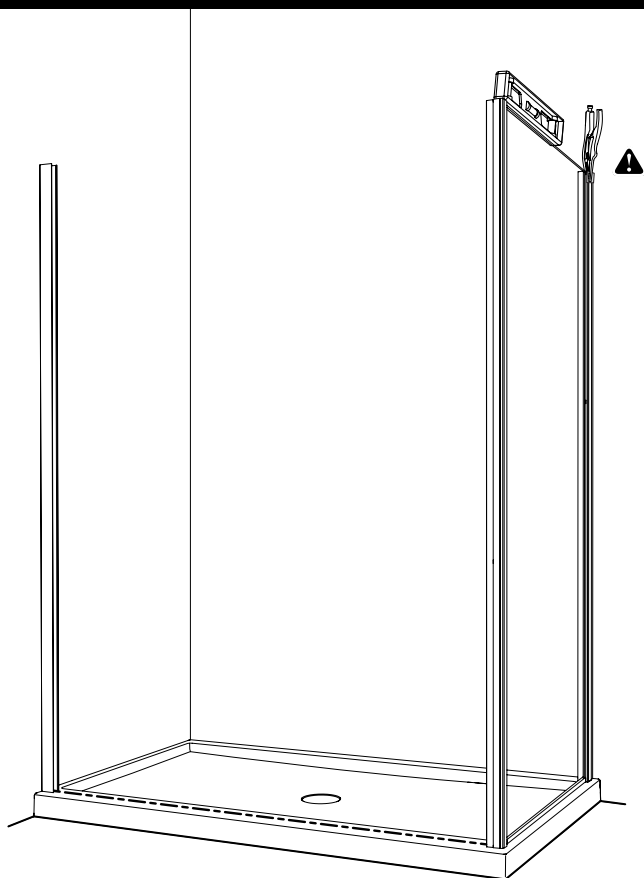




**ALINE THE WALL JAMB AND  
RETURN PANEL**

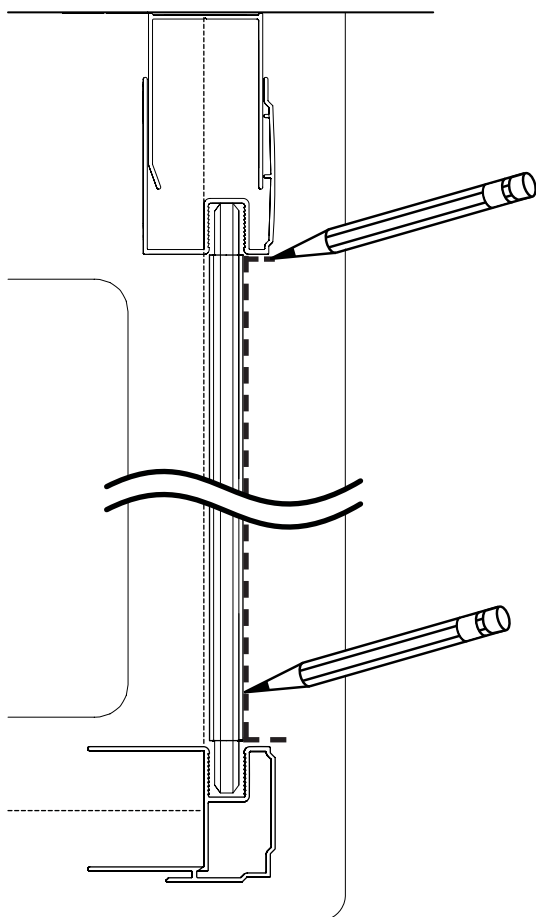
*ALIGNER LE JAMBAGE ET LE  
PANNEAU DE RETOUR*



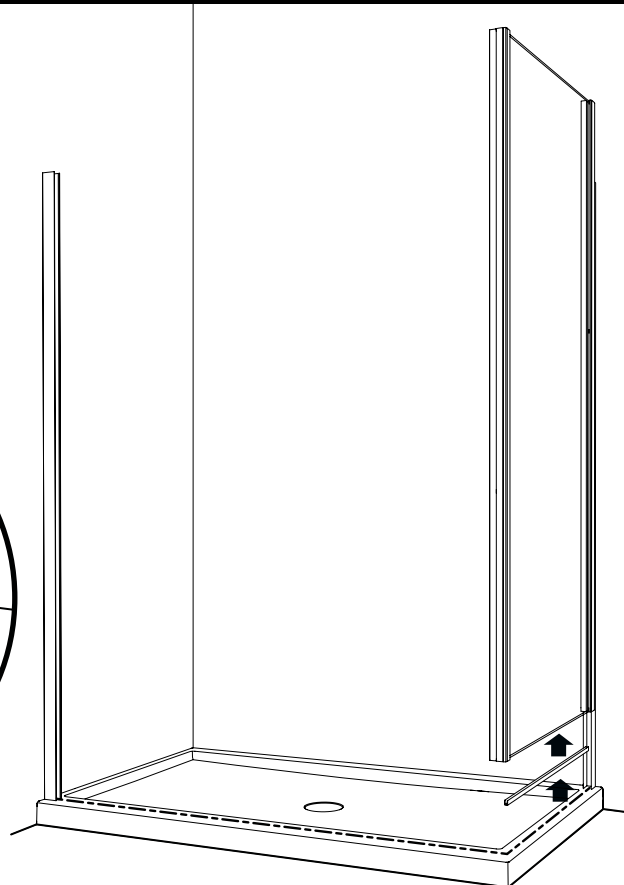
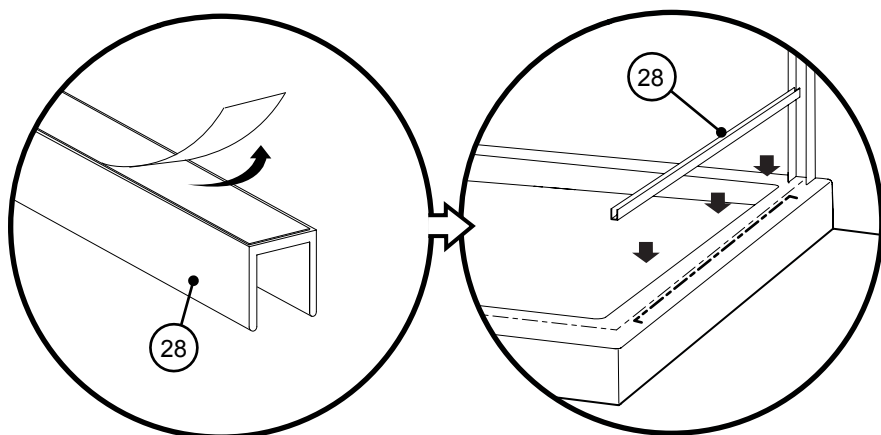
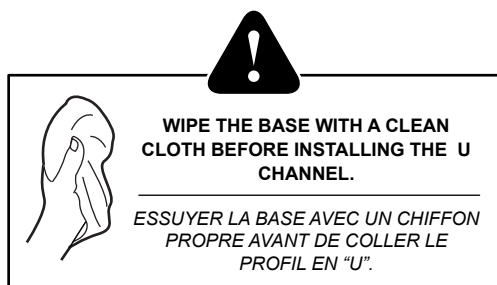


**COVER THE PLIERS' TEETH BEFOREHAND TO  
AVOID SCRATCHING THE ALUMINUM PARTS**

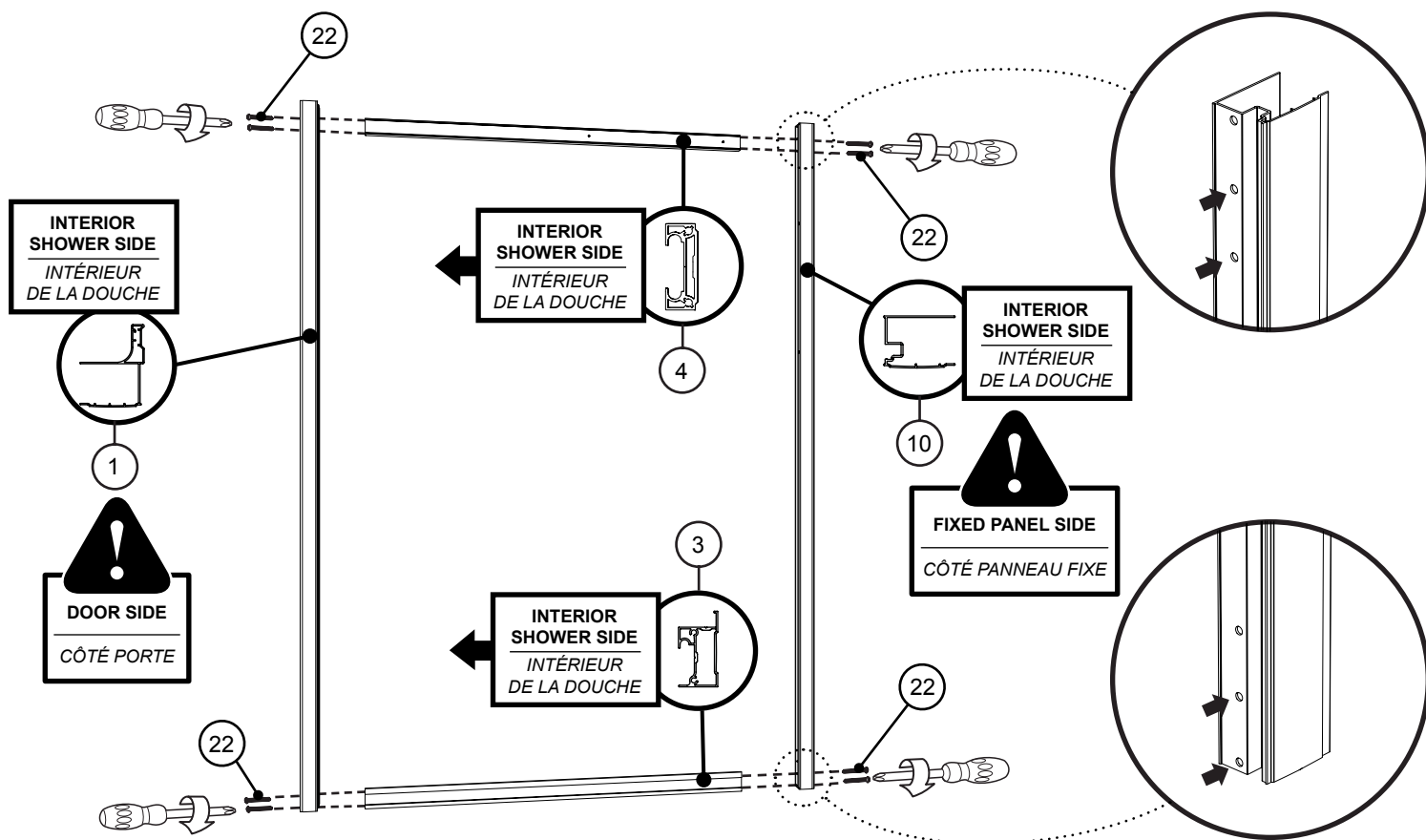
*RECOUVRIR LES DENTS DE LA PINCE AFIN DE NE PAS  
GRAFIGNER LES PIÈCES EN ALUMINIUM*

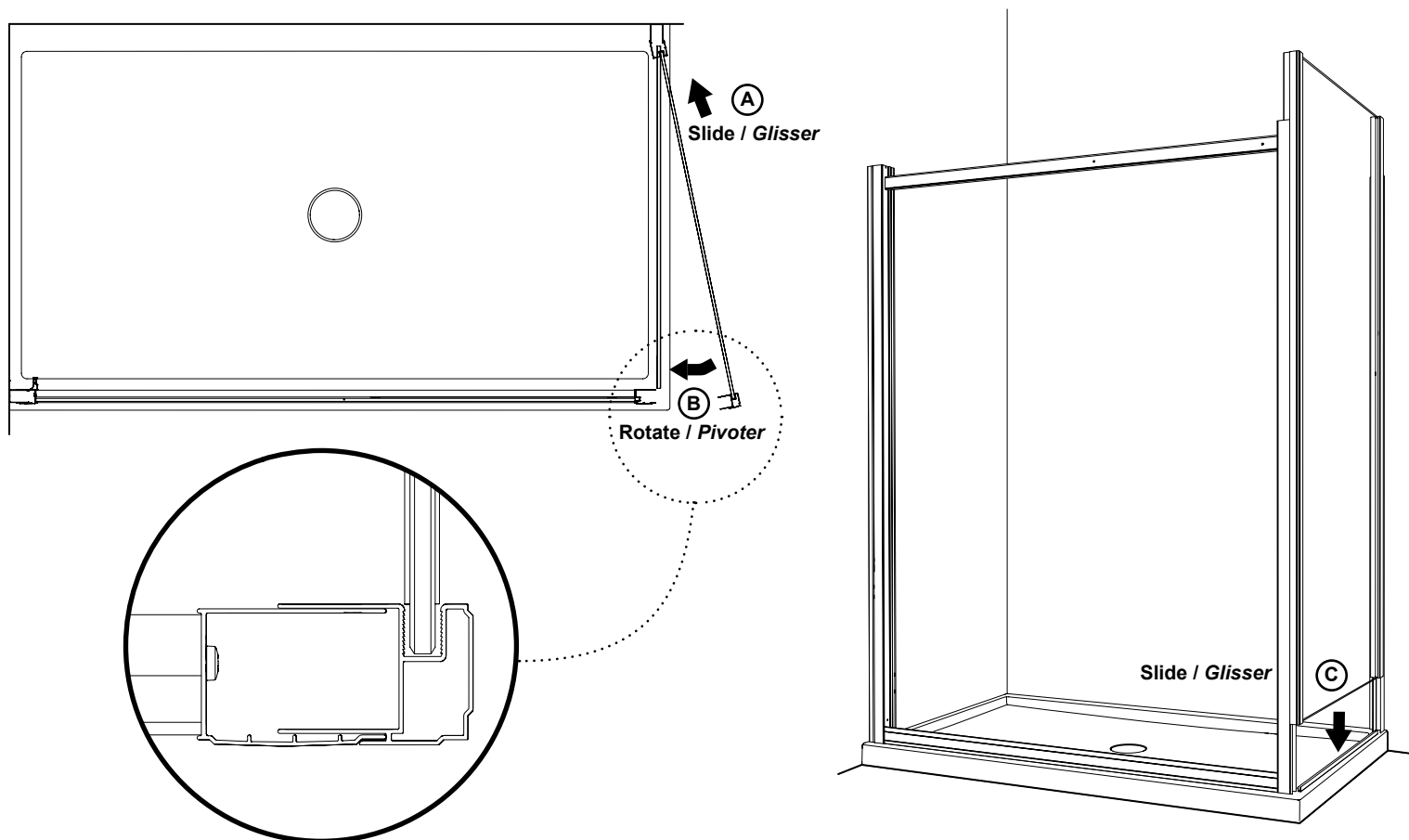
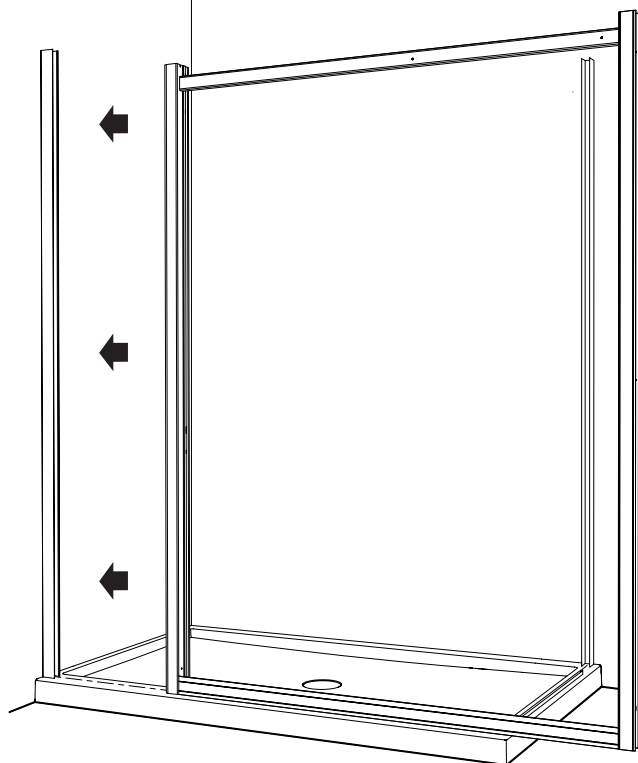


# 11 REMOVE THE RETURN PANEL AND INSTALL U CHANNEL / RETIRER LE PANNEAU DE RETOUR ET INSTALLER LE PROFILÉ EN "U"



# 12 ASSEMBLE THE FRAME / ASSEMBLER LE CADRE

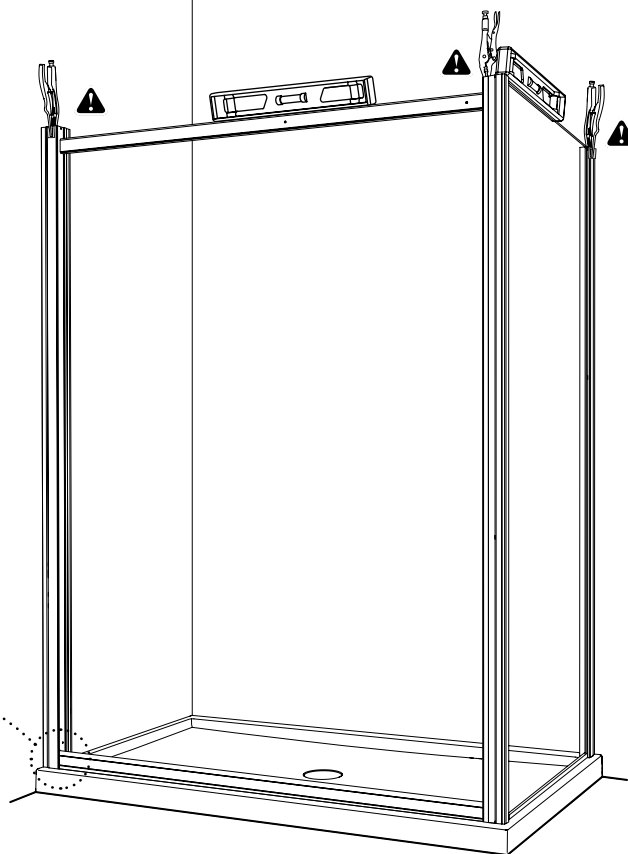
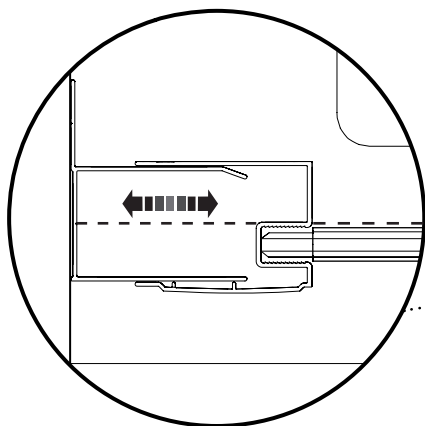




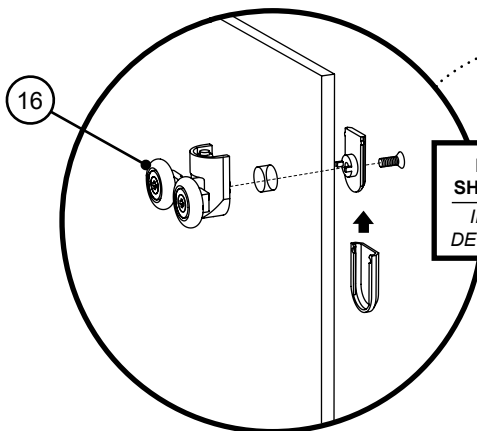


COVER THE PLIERS' TEETH BEFOREHAND TO  
AVOID SCRATCHING THE ALUMINUM PARTS

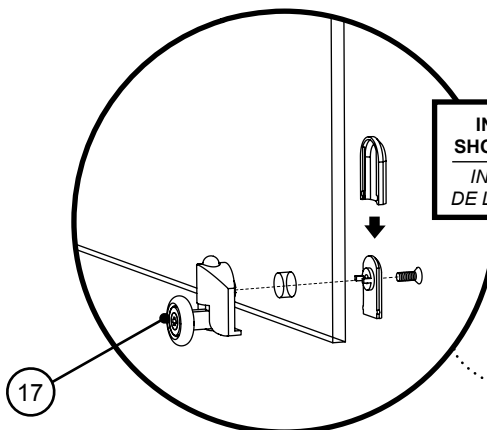
RECOUVRIER LES DENTS DE LA PINCE AFIN DE NE PAS  
GRAFIGNER LES PIÈCES EN ALUMINIUM



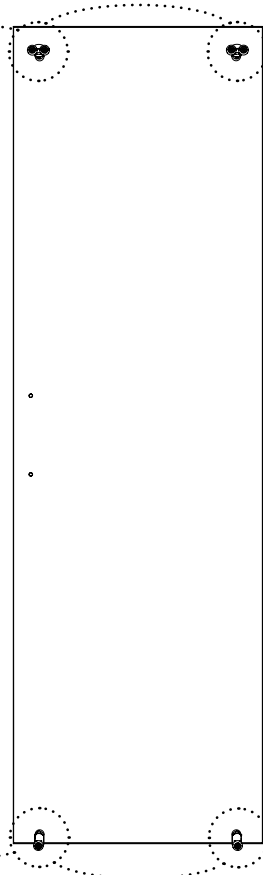
16 INSTALL WHEELS IN THE CORRECT ORIENTATION / INSTALLER LES ROUES DANS BONNE ORIENTATION



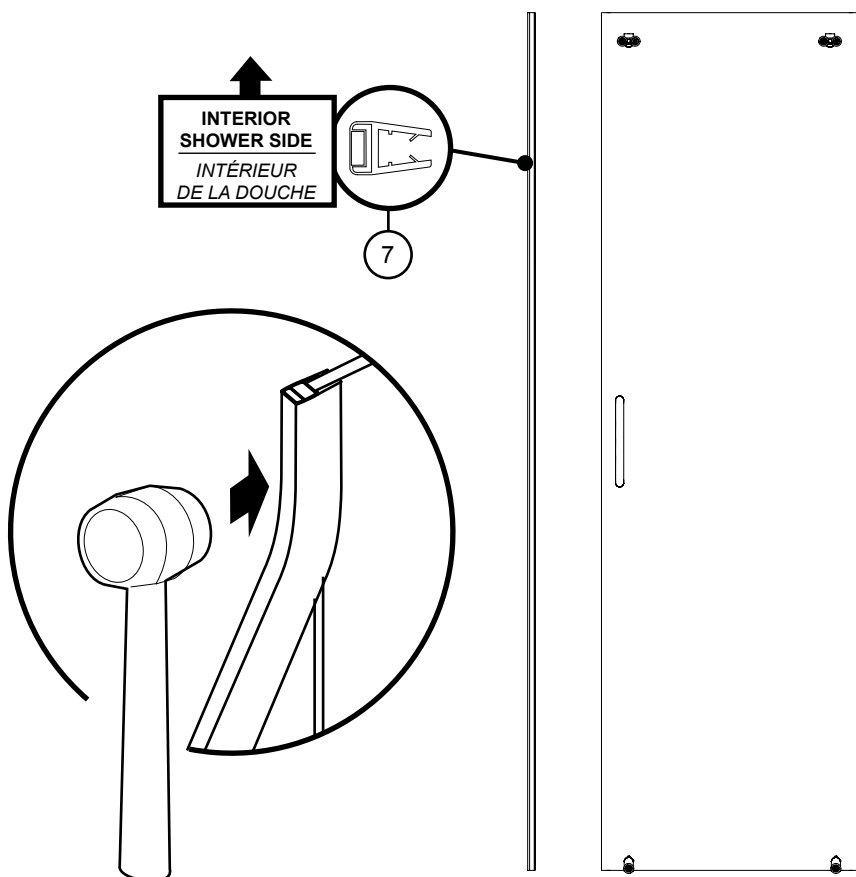
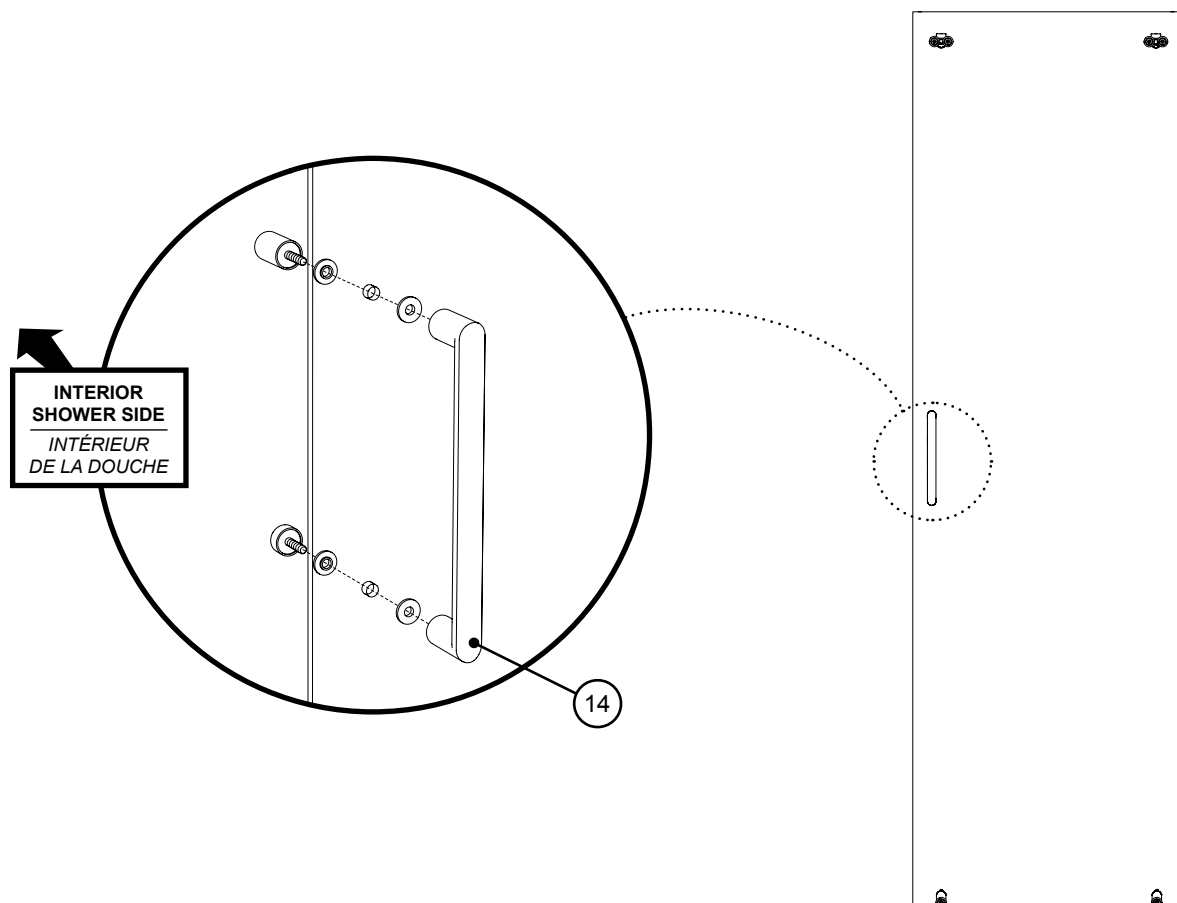
INTERIOR  
SHOWER SIDE  
INTÉRIEUR  
DE LA DOUCHE

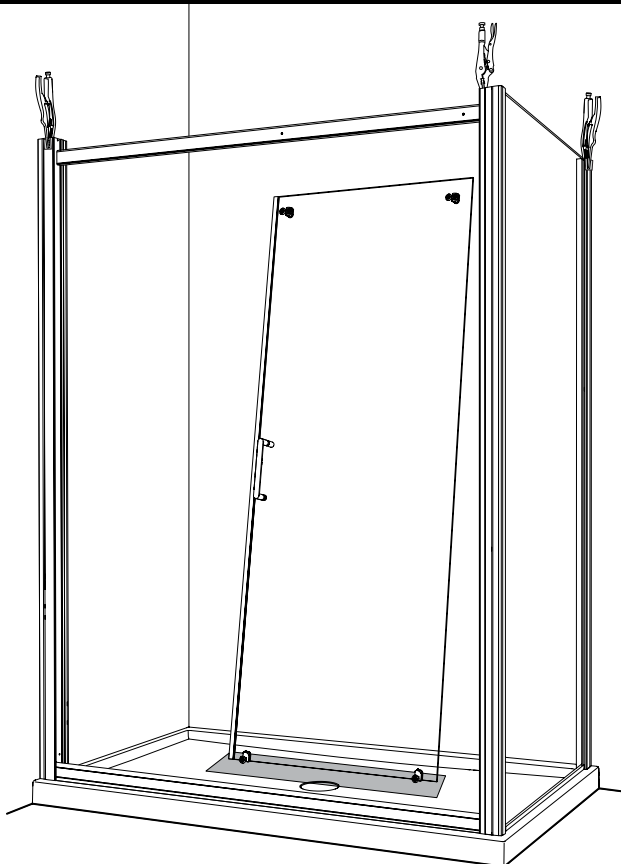


INTERIOR  
SHOWER SIDE  
INTÉRIEUR  
DE LA DOUCHE



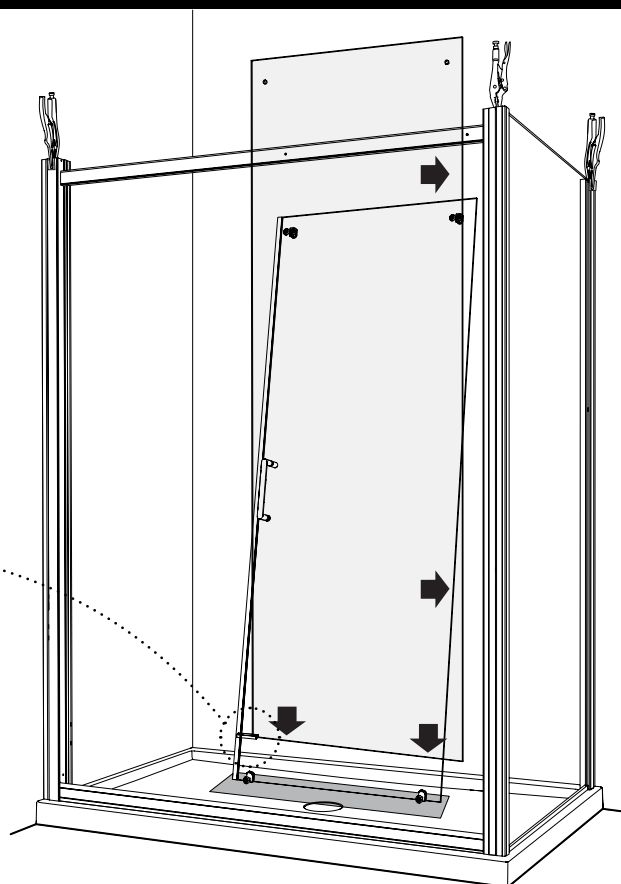
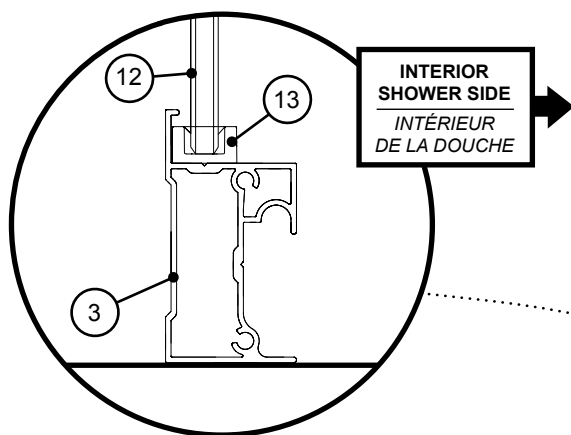
WHEELS MUST BE FACING  
OUTWARDS  
LES ROUES DOIVENT ÊTRE  
TOURNÉES VERS L'EXTÉRIEUR

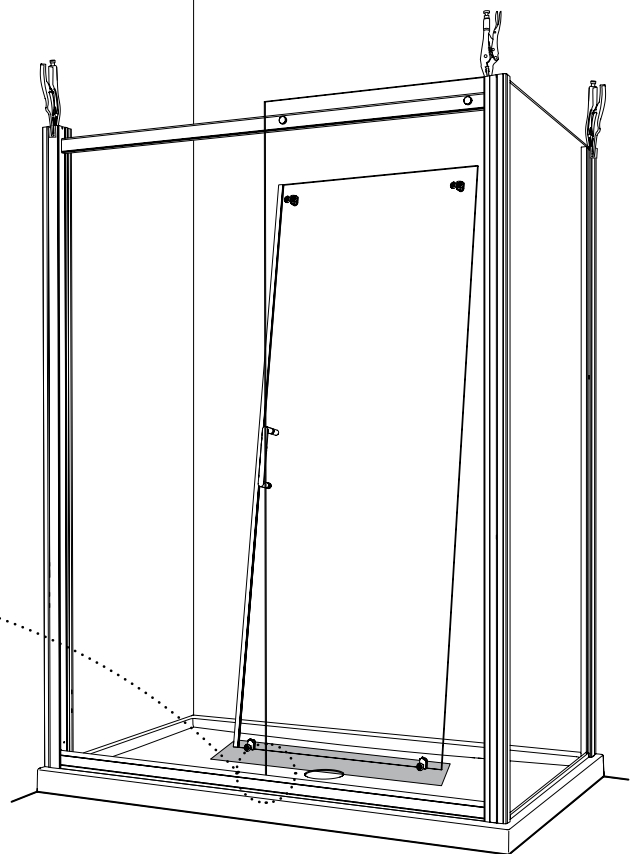
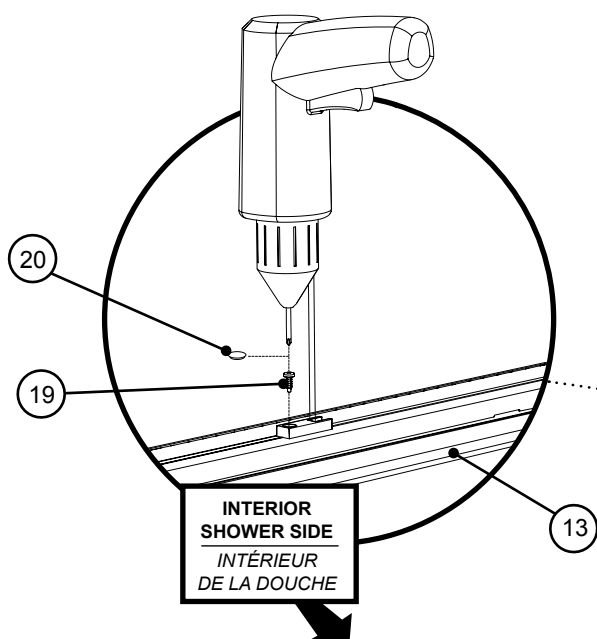
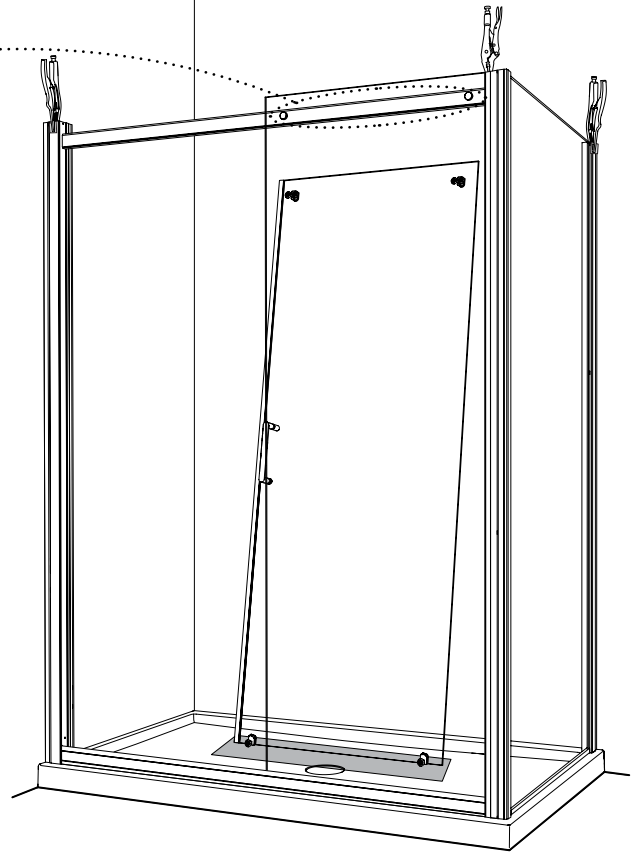
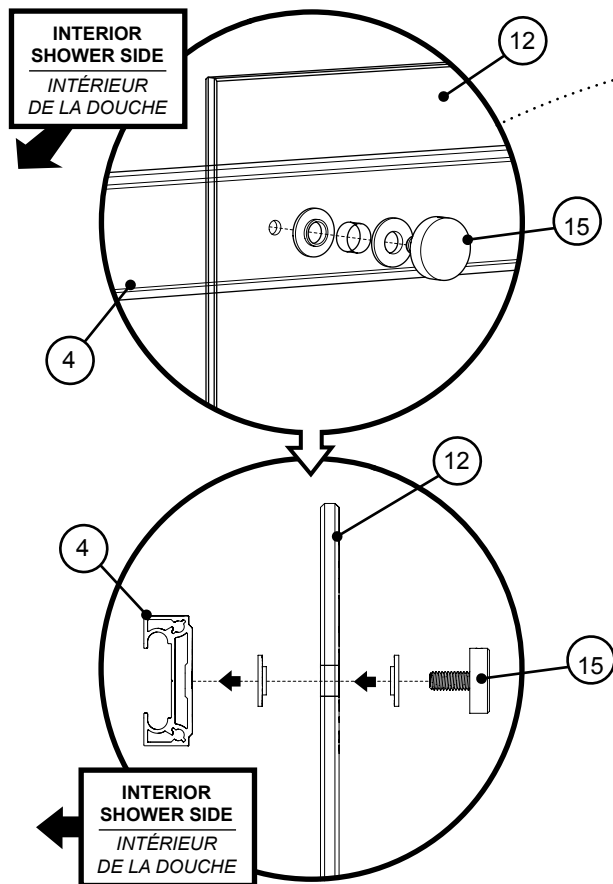




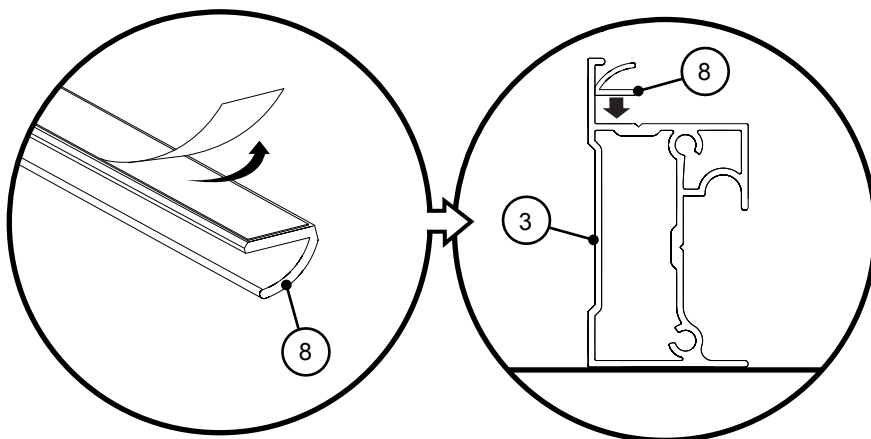
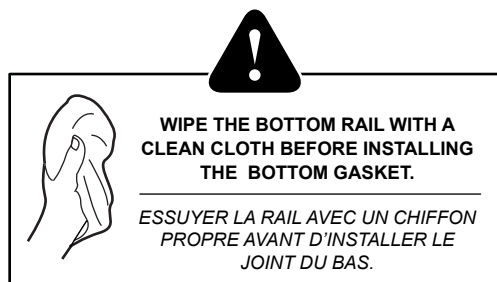
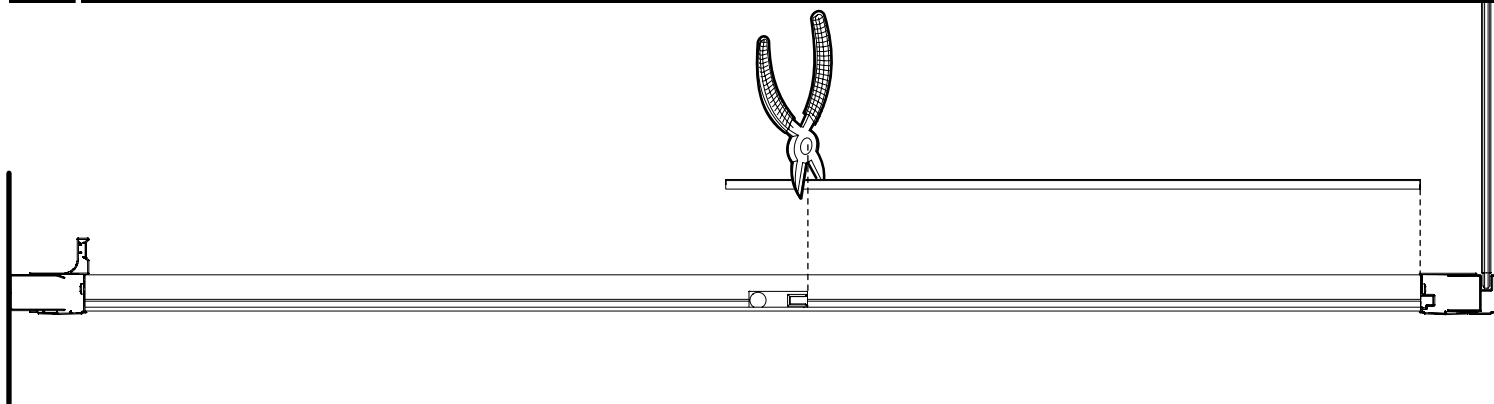
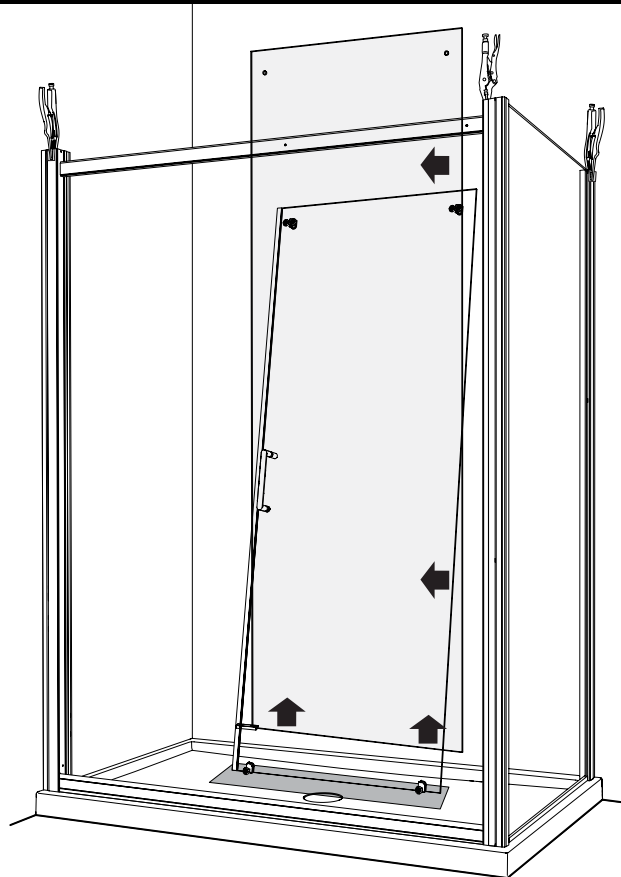
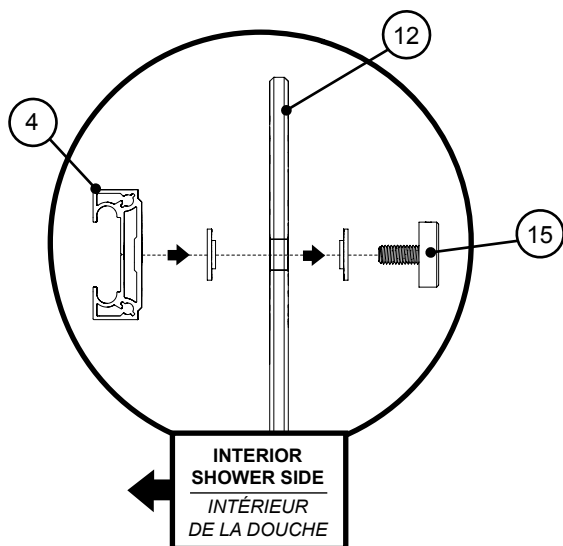
**PLACE THE DOOR ON A TOWEL TO PREVENT  
SCRATCHING THE SHOWER BASE**

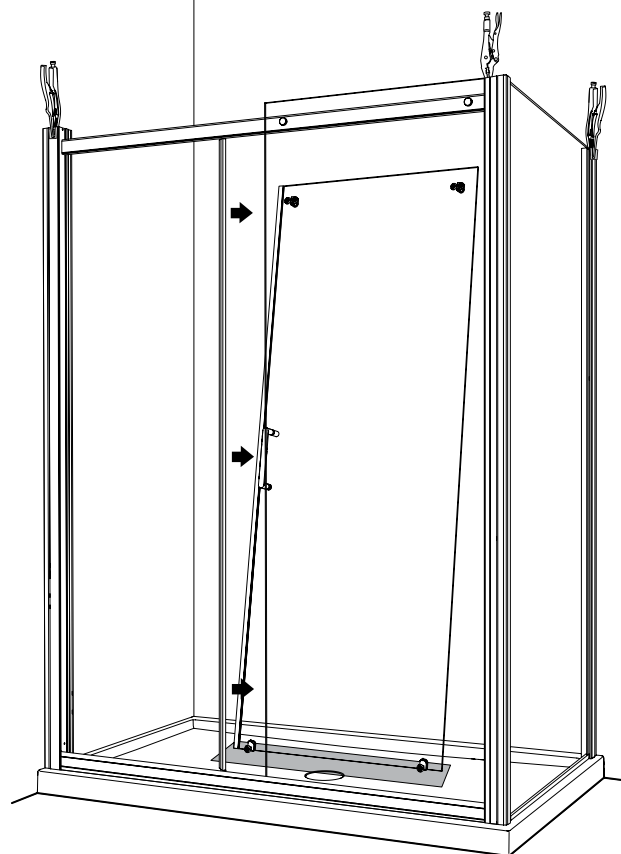
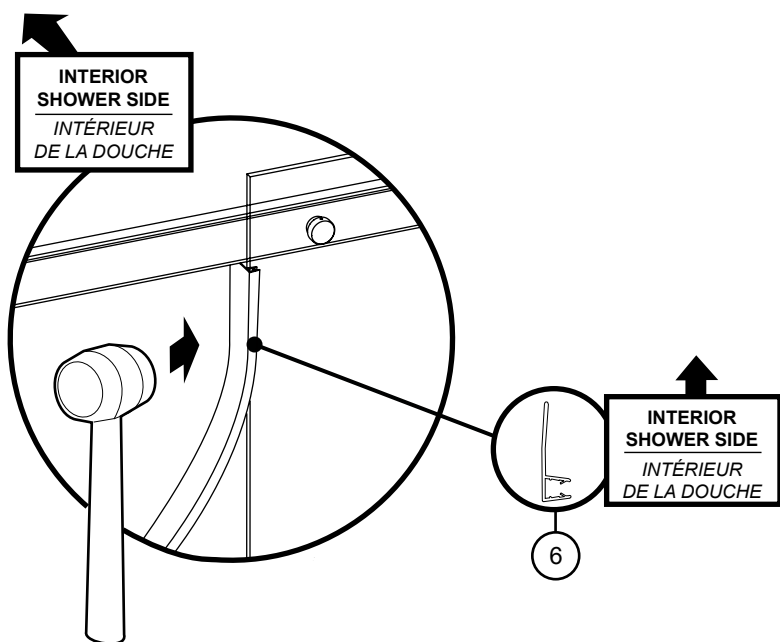
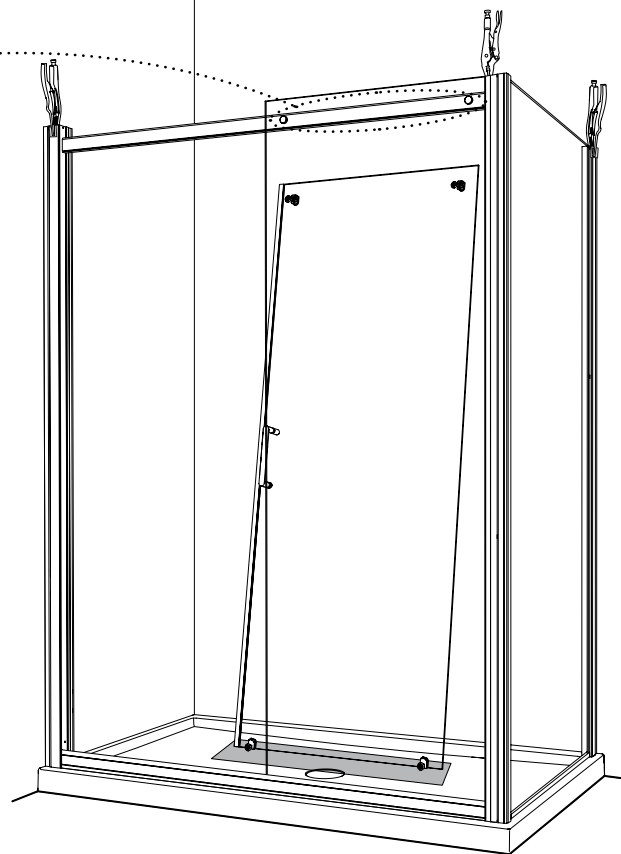
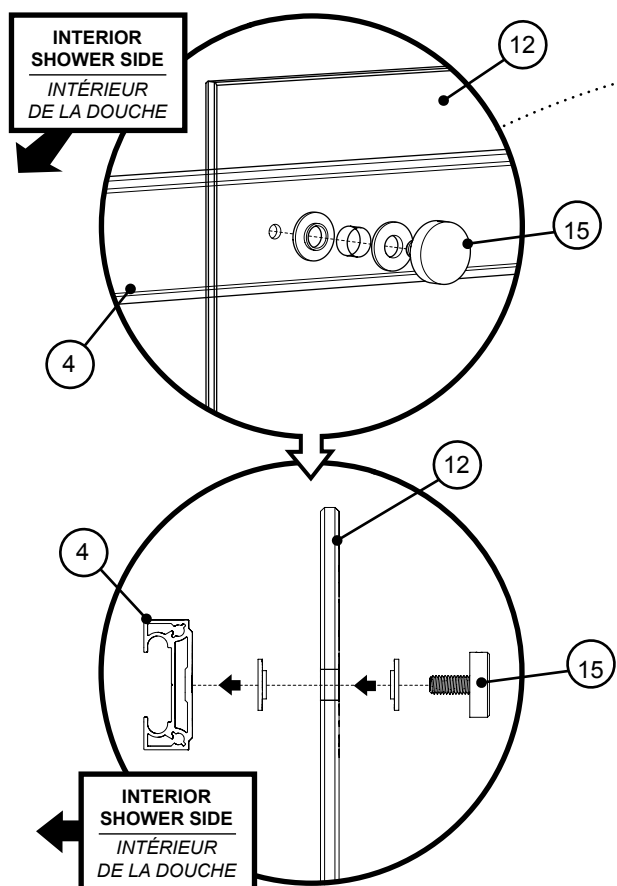
*PLACER LA PORTE SUR UNE SERVIETTE POUR  
ÉVITER DE RAYER LA BASE DE DOUCHE*

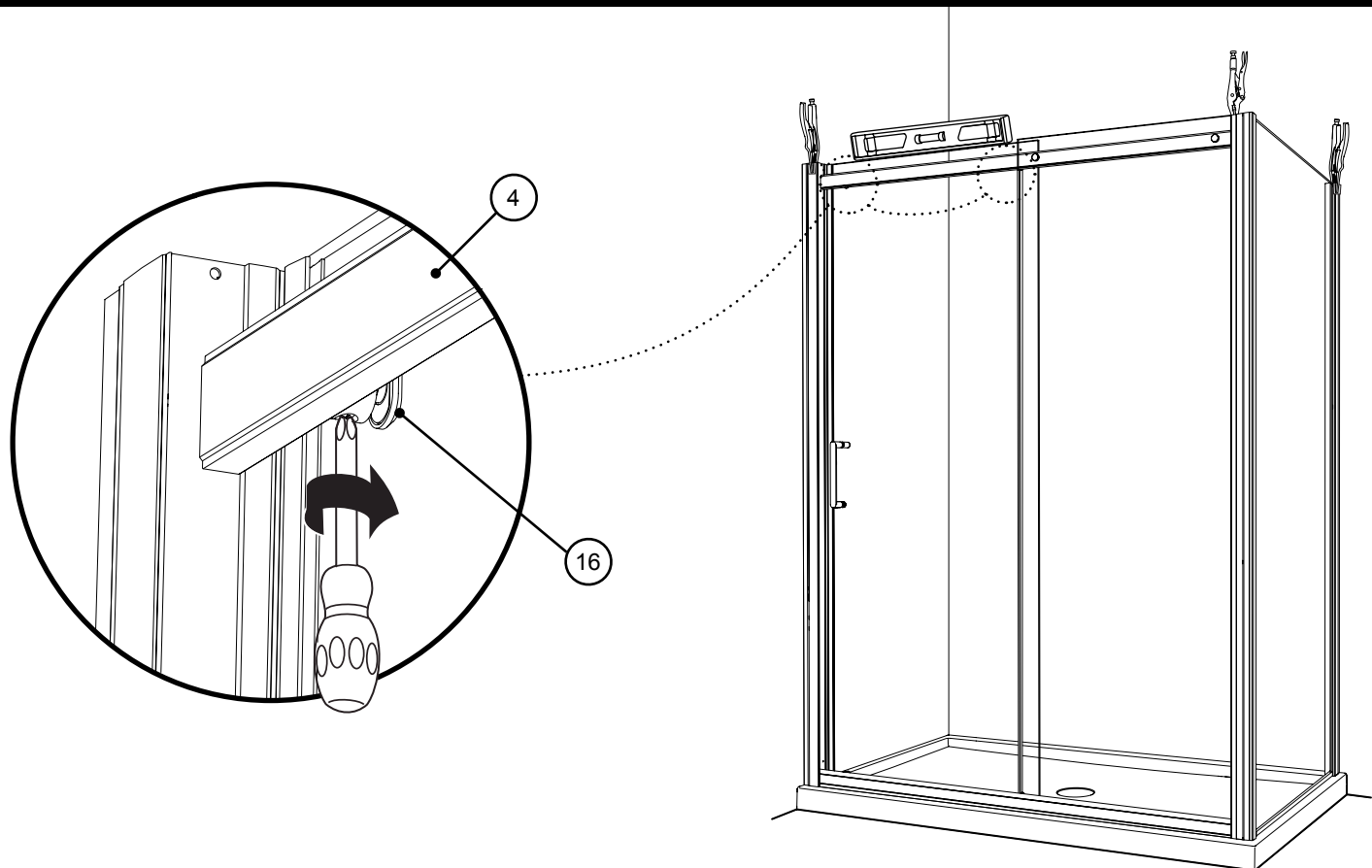
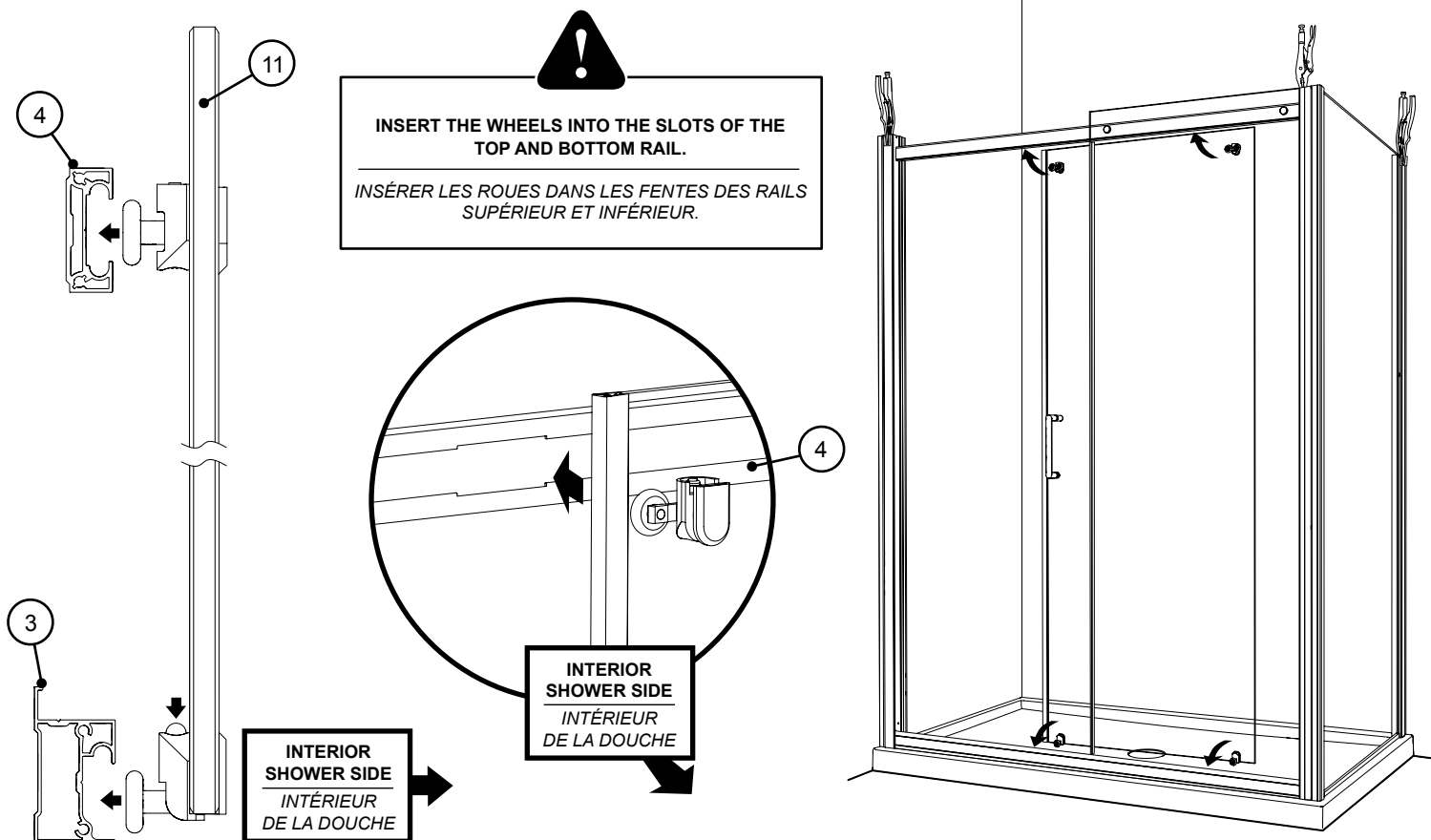


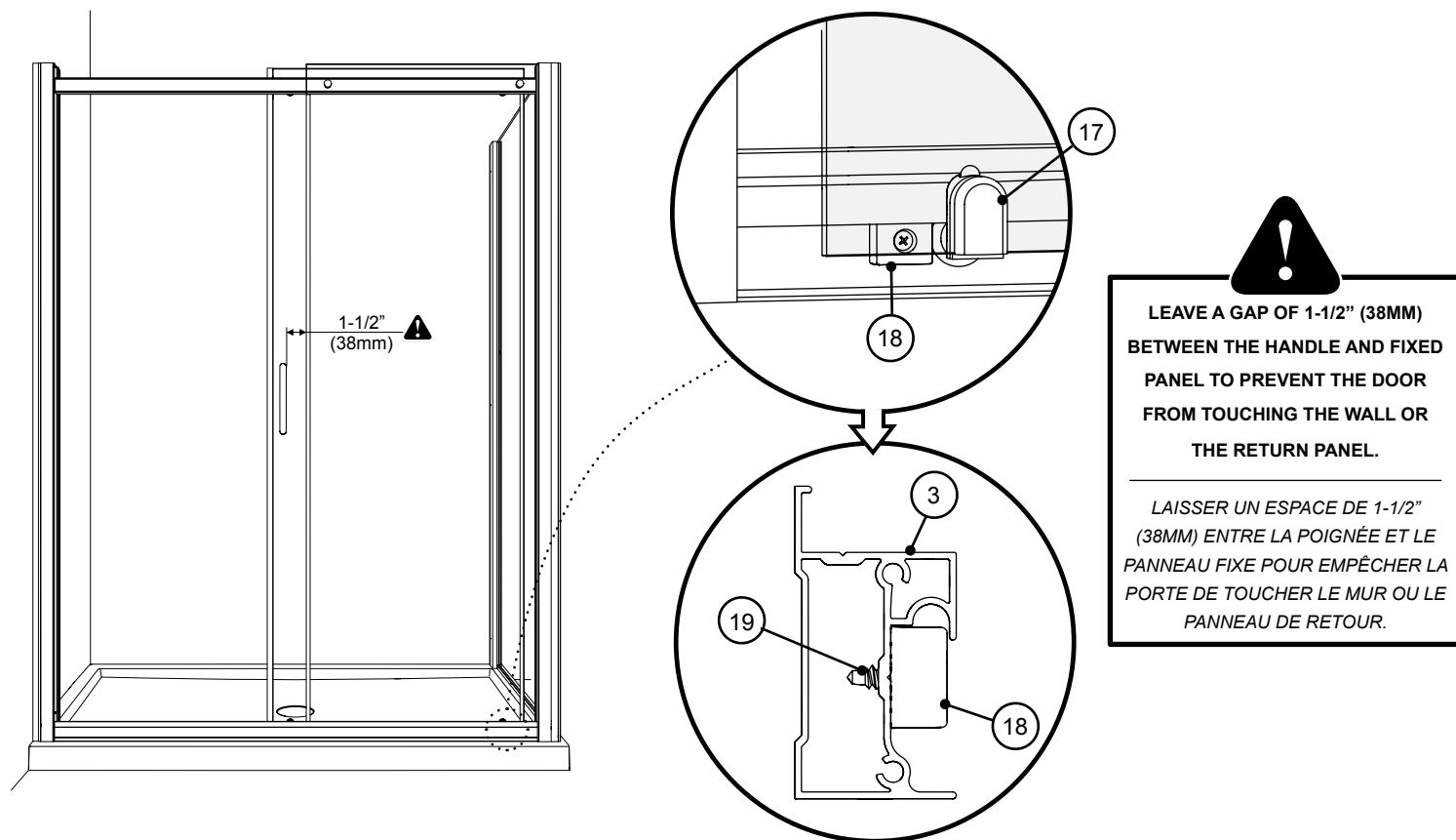
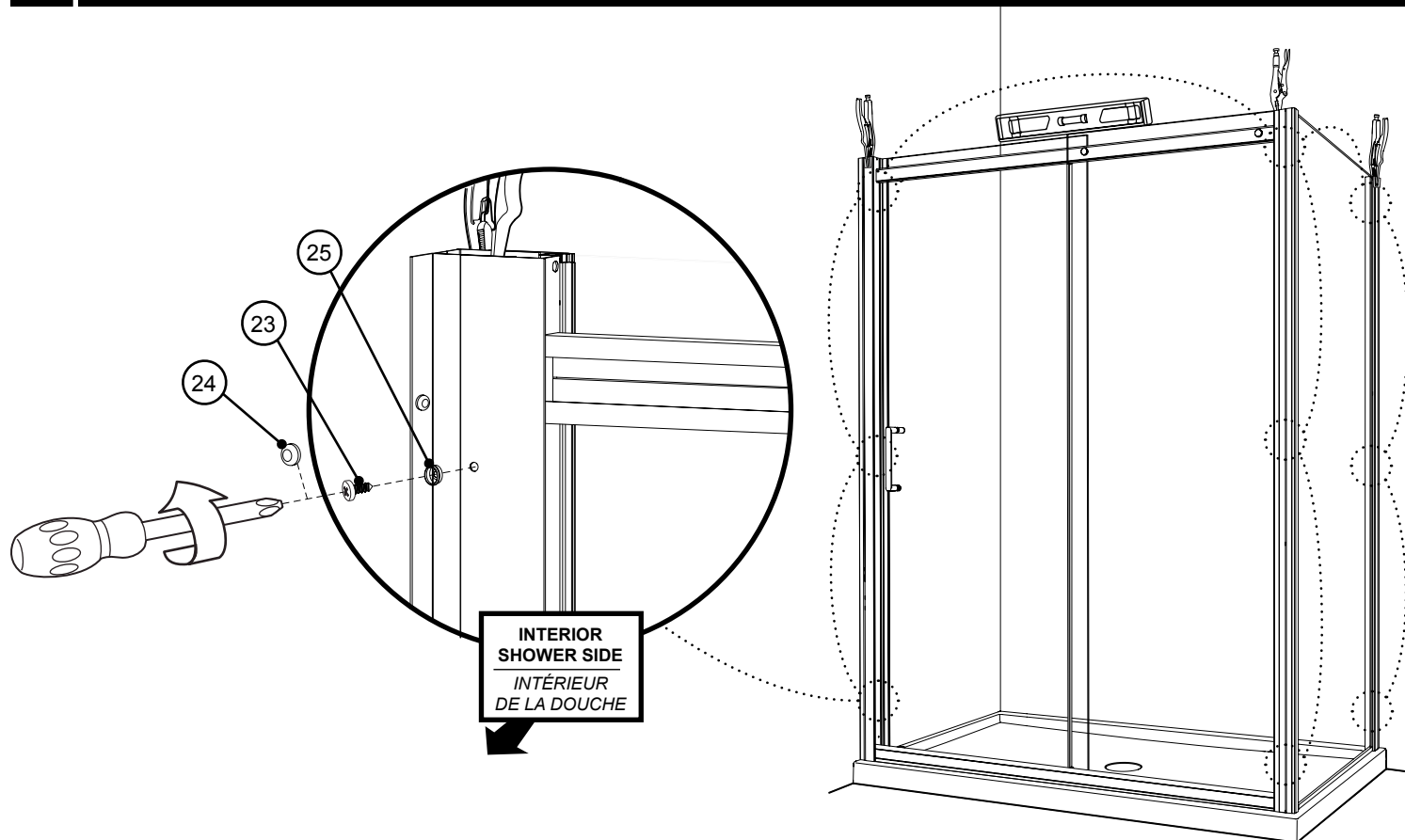


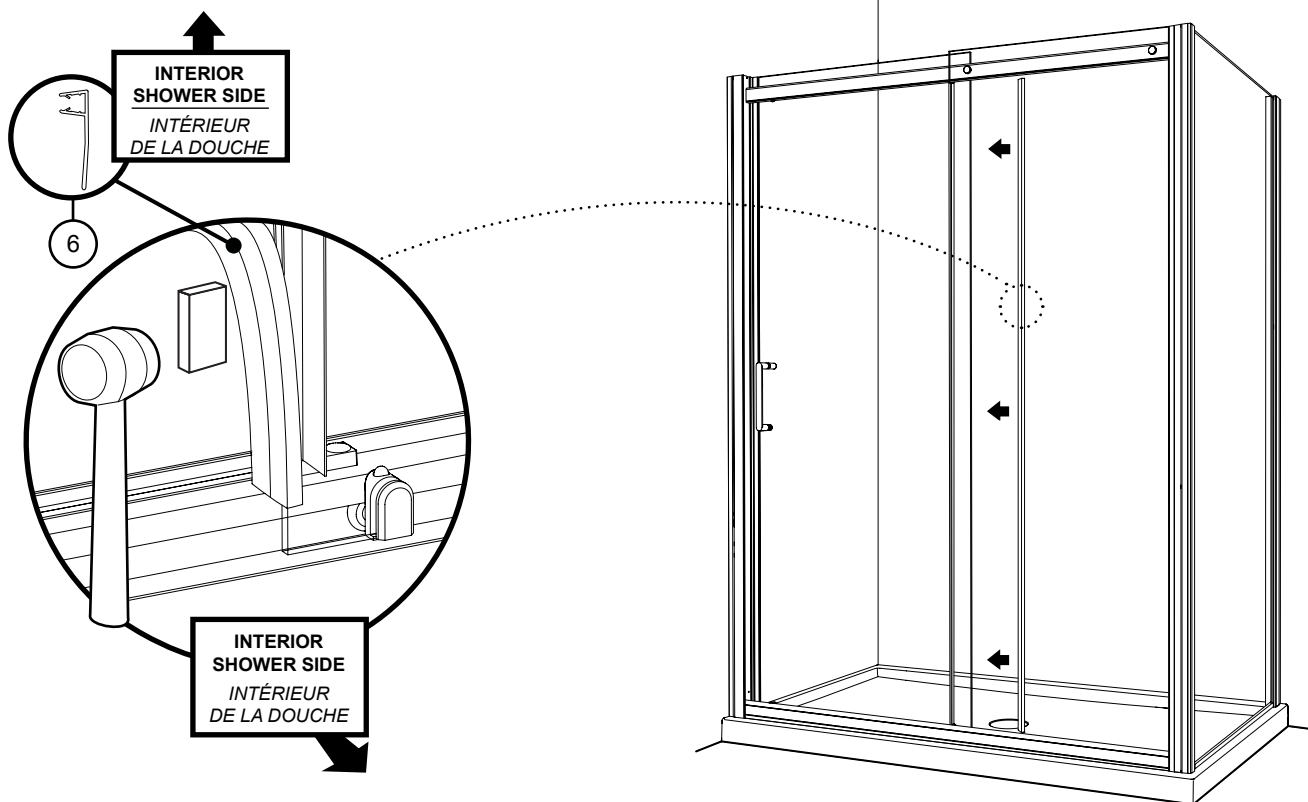
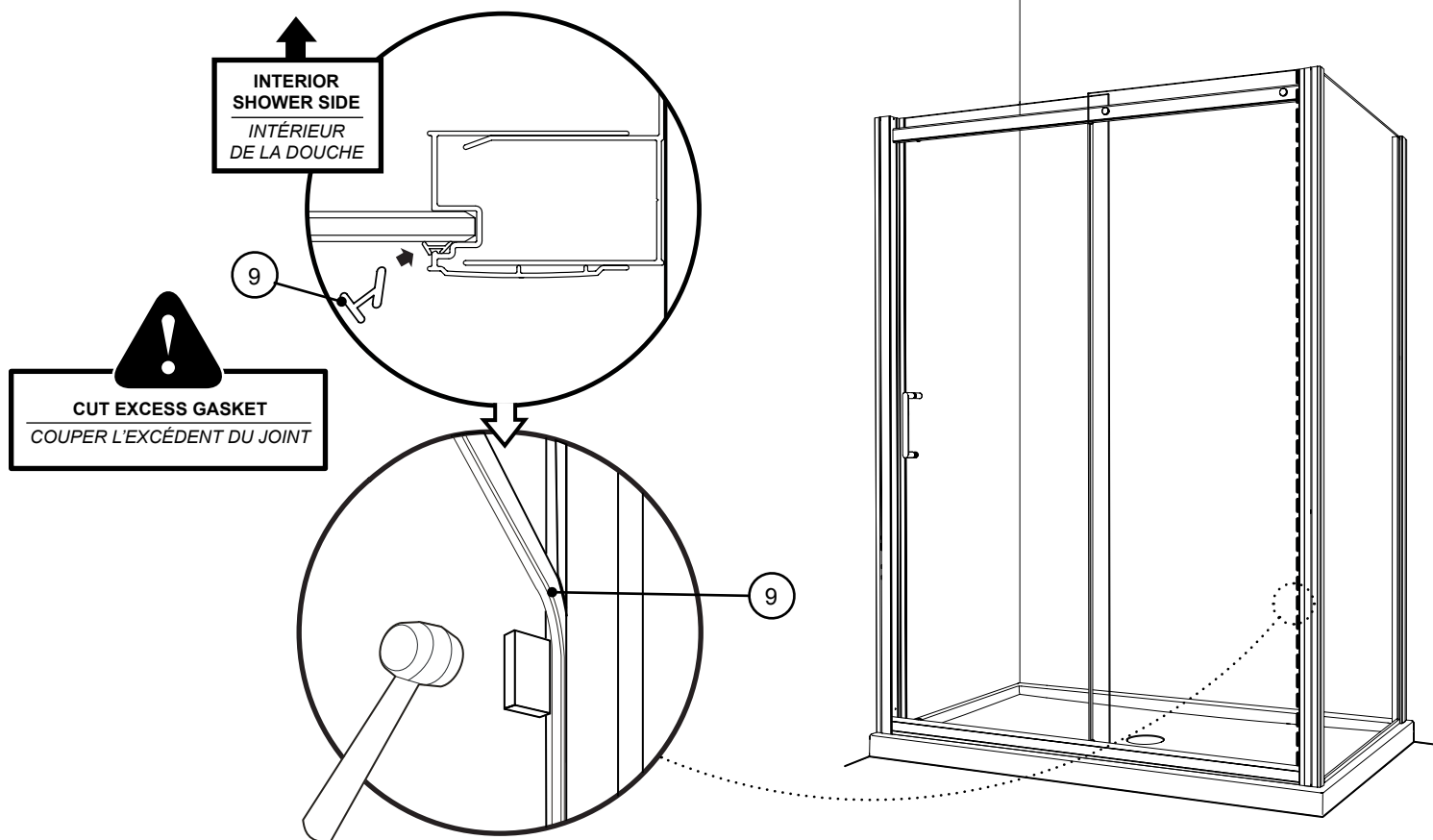


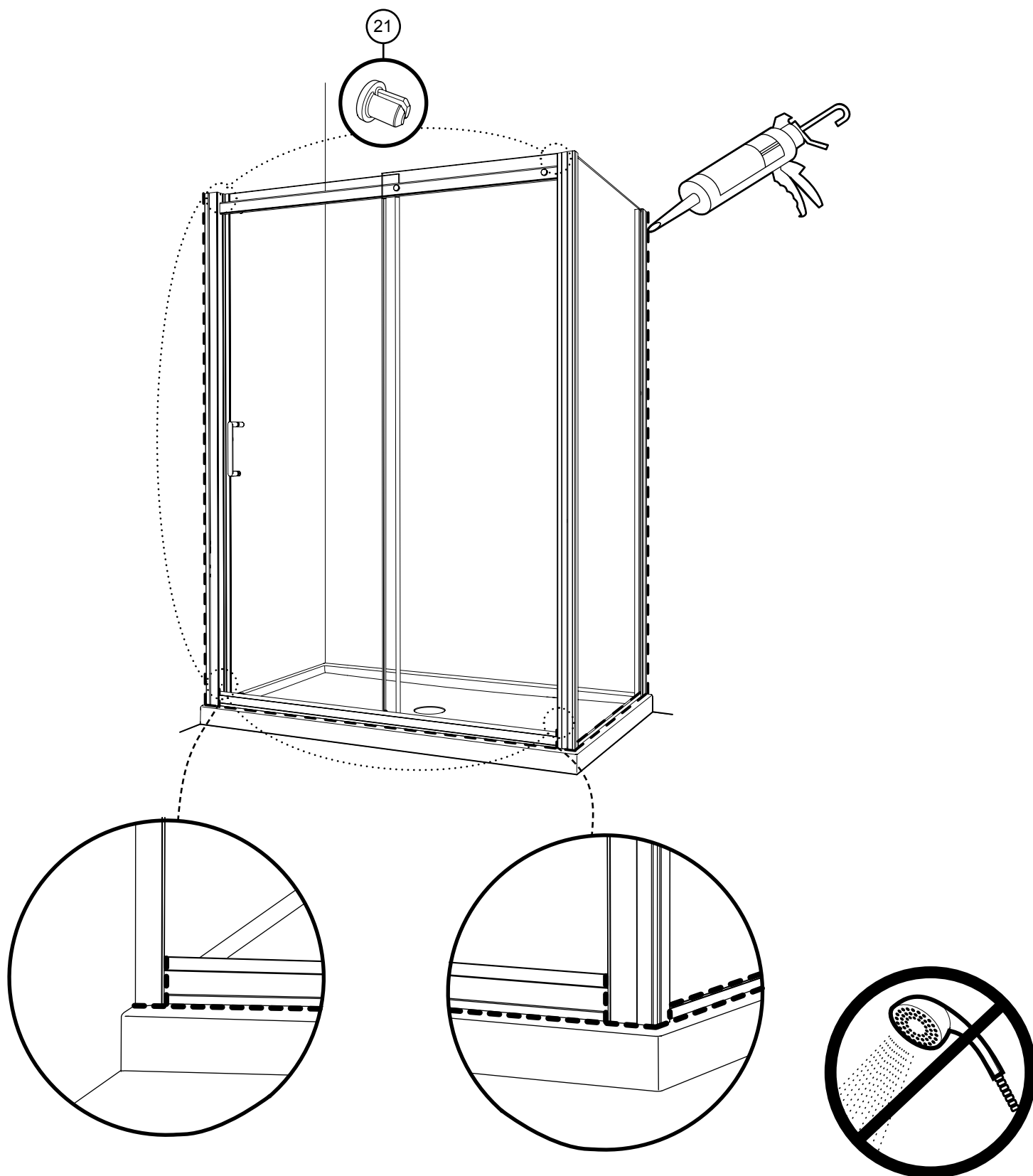












<b>24</b>	HOURS HEURES
-----------	-----------------