

# FITTINGS PARTS LIST



## ELEGANCE

51673 010181

## Edition 300

53073 010181

53073 010182

## Edition Palais

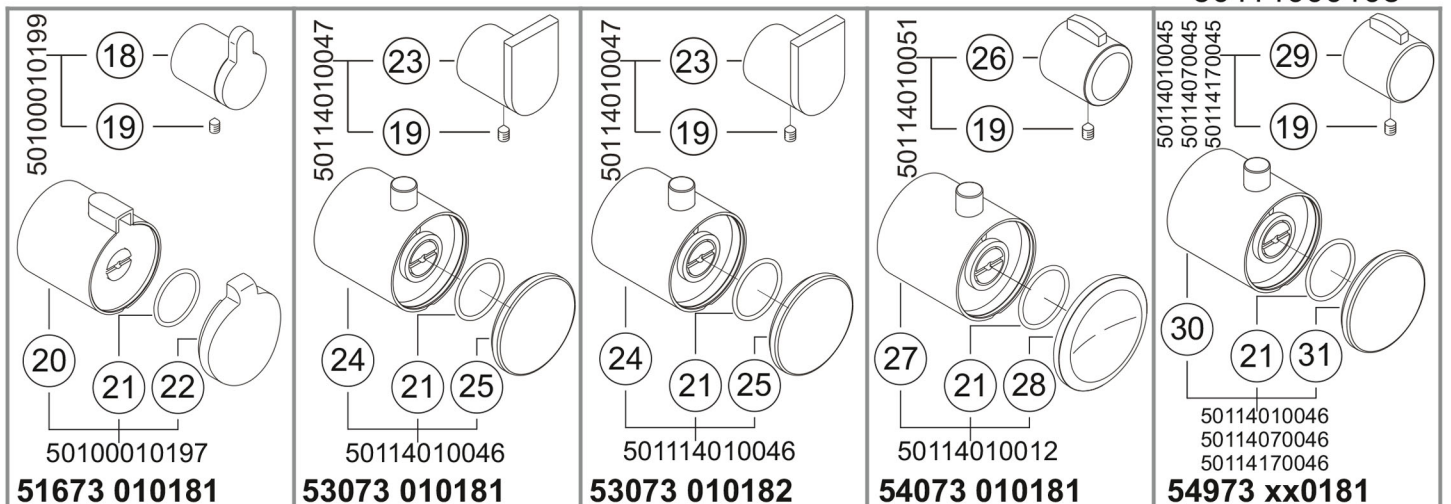
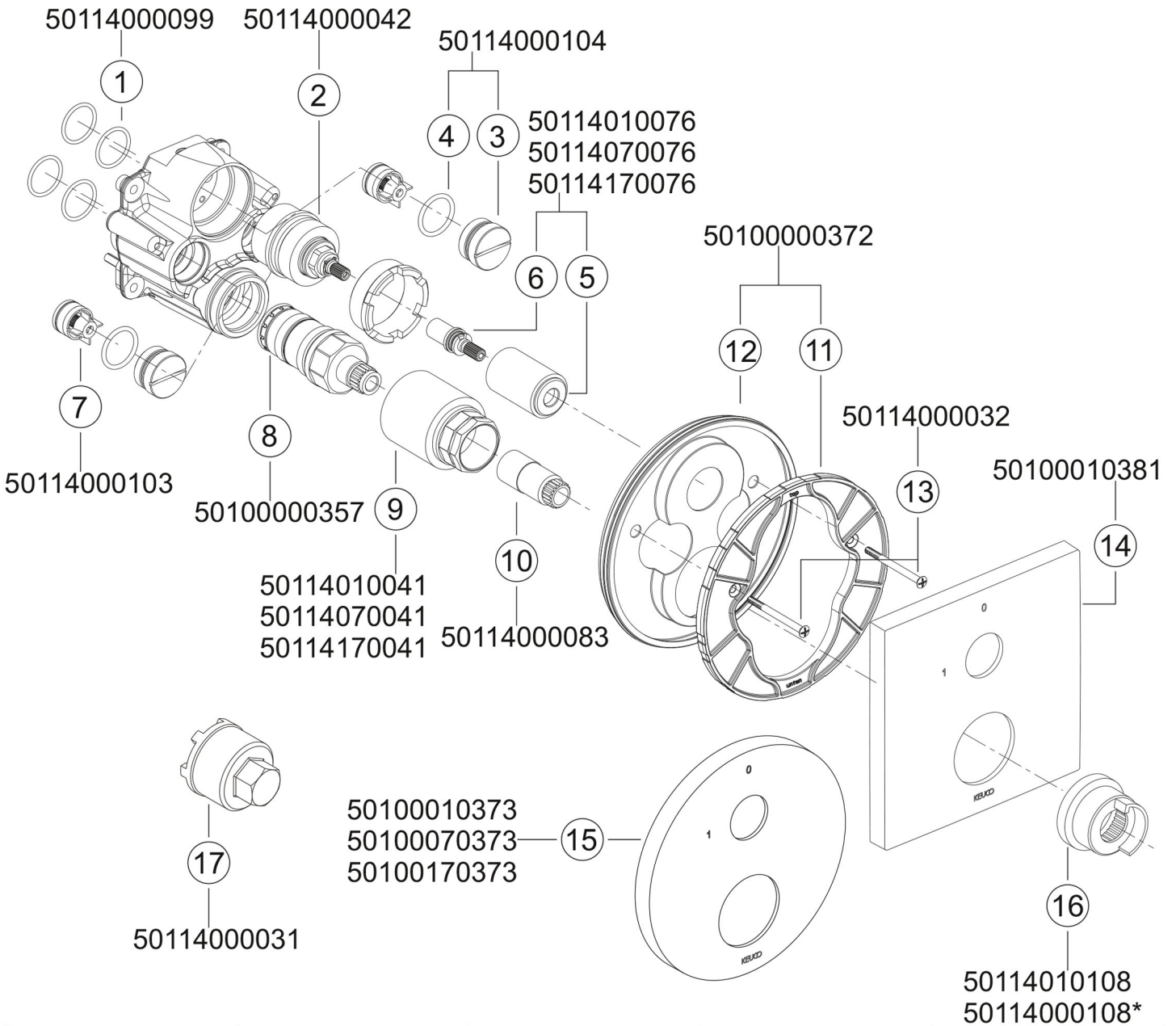
54073 010181

## PLAN

54973 010181

54973 070181\*

54973 170181\*



# FITTINGS PARTS LIST



## Elegance Fittings

### 51673 Thermostat battery DN 15/DN 20

50114000099	1		
50114000042	2	Stop cock complete	
50114000104		Screw plug complete Screw plug O-ring 22x22,5	
50114010076		Spindle extension complete Spindle extension Spindle coupling	chrome-plated
50114010076		Spindle extension complete Spindle extension Spindle coupling	stainless steel finish
50114010076		Spindle extension complete Spindle extension Spindle coupling	aluminium finish
50114000103		Back-flow preventer	
50100000357	8	Temperature regulator	
50114010041	9	Head extension	chrome-plated
50114010041	9	Head extension	stainless steel finish
50114010041	9	Head extension	aluminium finish
50114000083	10	Spindle extension	
50100000372		Fixation complete	
	11	Fastening plate	
	12	Gasket	
50114000032	13	Screw	
50100010381	14	Screen	chrome-plated
50100010373	15	Screen	chrome-plated
50100010373	15	Screen	stainless steel finish
50100010373	15	Screen	aluminium finish
50114000108	16	Adjustment sleeve	
50114010108	16	Adjustment sleeve	chrome-plated
50114000031	17	Tensioning screw key	
50100010199		Selector complete	chrome-plated
	18	Selector	
	18	Handle	
	18	Flat-headed screw DIN7991 M4x10	
	19	Threaded pin DIN914 M5x8	
50100010199		Knob for thermostat complete Knob for thermostat Flat-headed screw Toothed plate Push button Spring Clamping pin Lid O-ring 27x2	chrome-plated
50114010047		Adjustment grip complete	chrome-plated
	23	Selector	
	23	Lever	
	23	Flat-headed screw DIN7991 M4x10	
	19	Threaded pin DIN914 M5x8	

50114010046		Knob for thermostat complete	chrome-plated
	24	Knob for thermostat	
	24	Push button	
	24	Spring	
	24	Clamping pin	
	24	Flat-headed screw	
	24	Toothed plate	
	24	Lid	
	21	O-ring 27x2	
50114010051		Adjustment grip complete	chrome-plated
	26	Selector	
	26	Lever	
	26	Flat-headed screw M3x12	
	19	Threaded pin DIN914 M5x8	
50114010012		Knob for thermostat complete	chrome-plated
	27	Knob for thermostat	
	27	Push button	
	27	Spring	
	27	Clamping pin	
	27	Flat-headed screw	
	27	Toothed plate	
	28	Lid	
	21	O-ring 27x2	
50114010045		Adjustment grip complete	chrome-plated
	29	Selector	
	29	Lever	
	29	Flat-headed screw M3x12	
	19	Threaded pin DIN914 M5x8	
50114010045		Adjustment grip complete	stainless steel finish
	29	Selector	
	29	Lever	
	29	Flat-headed screw M3x12	
	19	Threaded pin DIN914 M5x8	
50114010045		Adjustment grip complete	aluminium finish
	29	Selector	
	29	Lever	
	29	Flat-headed screw M3x12	
	19	Threaded pin DIN914 M5x8	
50114010045		Knob for thermostat complete	chrome-plated
	30	Knob for thermostat	
	30	Push button	
	30	Spring	
	30	Clamping pin	
	30	Flat-headed screw	
	30	Toothed plate	
	31	Lid	
	21	O-ring 27x2	
50114010045		Knob for thermostat complete	stainless steel finish
	30	Knob for thermostat	
	30	Selector	
	30	Spring	
	30	Clamping pin	
	30	Flat-headed screw	
	30	Toothed plate	
	31	Lid	
	21	O-ring 27x2	

50114010045		Knob for thermostat complete	aluminium finish
	30	Knob for thermostat	
	30	Push button	
	30	Spring	
	30	Clamping pin	
	30	Flat-headed screw	
	30	Toothed plate	
	31	Lid	
<b>Article no.</b>	<b>No.</b>	<b>Spare part</b>	<b>Surface</b>