

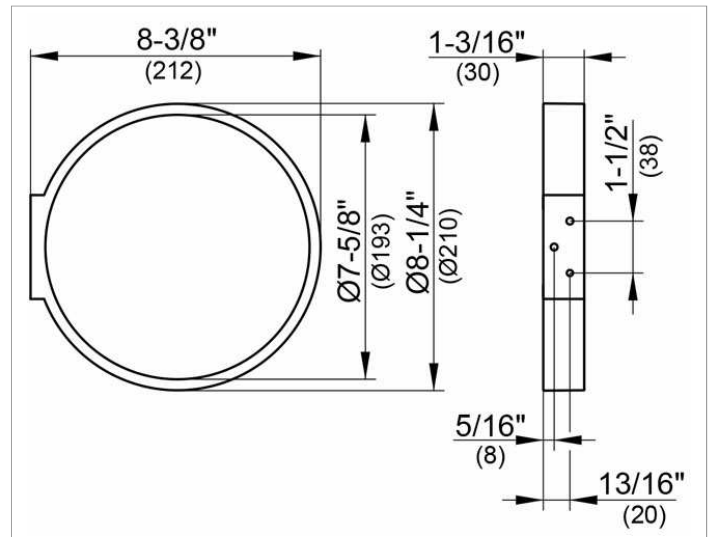
Edition 300

3002101000 Towel ring

**PRODUCT**



**DRAWING**



**SURFACE**

chrome-plated

**SPECIFICATIONS**

KEUCO EDITION 300 towel ring 3002101000  
 chrome-plated towel ring in an aesthetic and classic design  
 closed round form  
 anti static, easy to clean  
 diameter 210 mm  
 The towel ring is fitted with 2 hidden fixing points  
 1 wall plug, Fischer FU6x45 mm and 1 wall screw are supplied

**Warranty:** KEUCO products are covered by a 5-year manufacturer's warranty, in effect from the date of purchase. During this time, proven product defects will be remedied free of charge. Warranty claims must be filed in writing, including a detailed description of the defect immediately after a defect has occurred. For a copy of our detailed product warranty policy, please contact us at [office-usa@keuco.com](mailto:office-usa@keuco.com).

**Installation:** KEUCO products must be installed by a qualified professional in accordance with the respective installation guidelines and any applicable federal / local building codes and regulations.