

INSTALLATION INSTRUCTIONS

Decorative Wall Bar

Part #'s: 9324, 9330, 9336

JACLO[®]
Confidence from start to finish.[®]



PARTS

- › Wall bar with slider and top water supply outlet
- › 2 Escutcheons
- › 2 Screws
- › 2 Anchors
- › Allen wrench

POSITIONING OF WALL BAR

- › Determine convenient height for placement of wall bar (water outlet top or bottom).
- › Rough in plumbing accordingly.

PREPARING FOR INSTALLATION

- › Separate water supply post off of wall bar, by pulling downward from bar.
- › Remove nipple from water outlet by pulling threads outward, away from water elbow.
- › Install nipple into rough in plumbing and secure tightly using hex wrench (not supplied). **See Fig. 1**
- › Temporarily install wall bar to wall and using a marking tool, trace around bottom post of wall bar to mark location of bottom post.
- › Using provided mounting post and screws, secure into wall where marking is located.
- › Place escutcheons over mounting post and nipple against wall.
- › Place wall bar against escutcheons.
- › Once proper fit is achieved, tighten set screws securely.

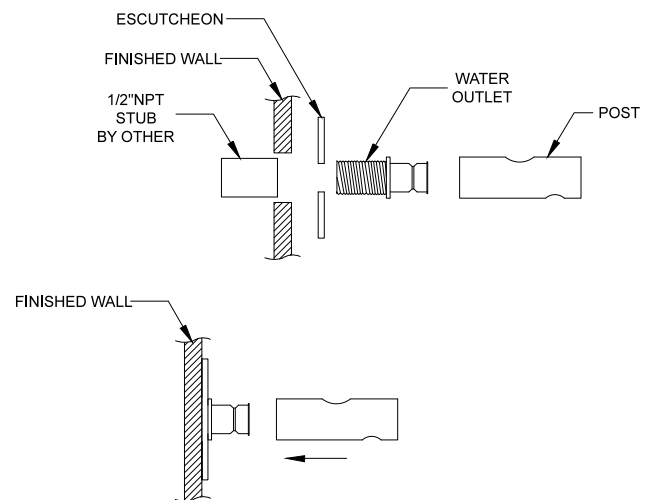


FIGURE 1

INSTALLING HOSE & HANDSHOWER

- › Screw hose on to bottom threads.
- › Insert handshower into the slide mechanism.
- › Adjust the height of handshower by simply pressing the button on top of slider and sliding to your desired height.

To learn more about JACLO's warranty, please visit [**jaclo.com**](http://jaclo.com)