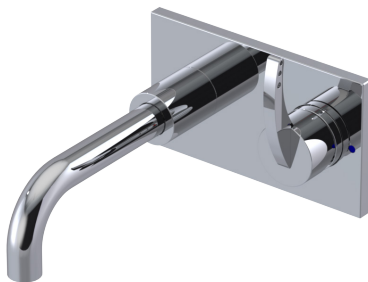


**ASSEMBLY INSTRUCTION****1JLAL****WALL MOUNT SINGLE CONTROL LAVATORY SET****1JLAL****REMOVAL OF FAUCET:**

Always turn the water supply off before removing the existing faucet or disassembling a valve. Open both faucet handles to relieve water pressure and to ensure that the water has been successfully turned off.

**CARE OF FAUCET:**

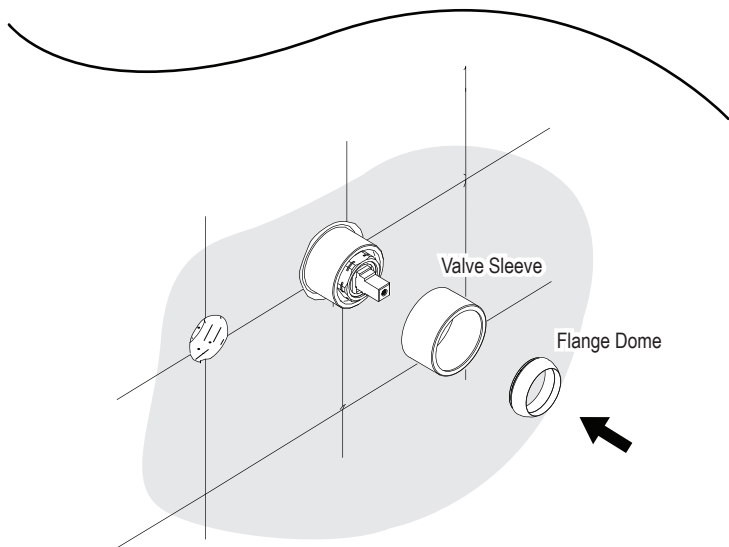
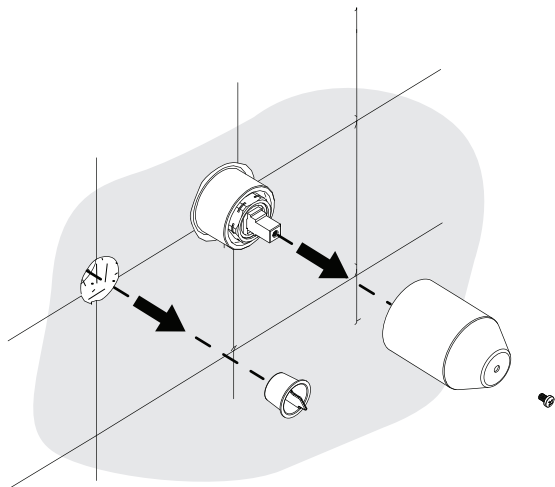
The use of warm water and a soft cloth is all that is required to clean Rubinet products. The patina of our living finishes (Oil Rubbed Bronze & Tuscan Brass) will change as a result of normal use. Applying Mineral Oil on occasion will create a softer look, subtle color changes and character.

**CONTACT US:**

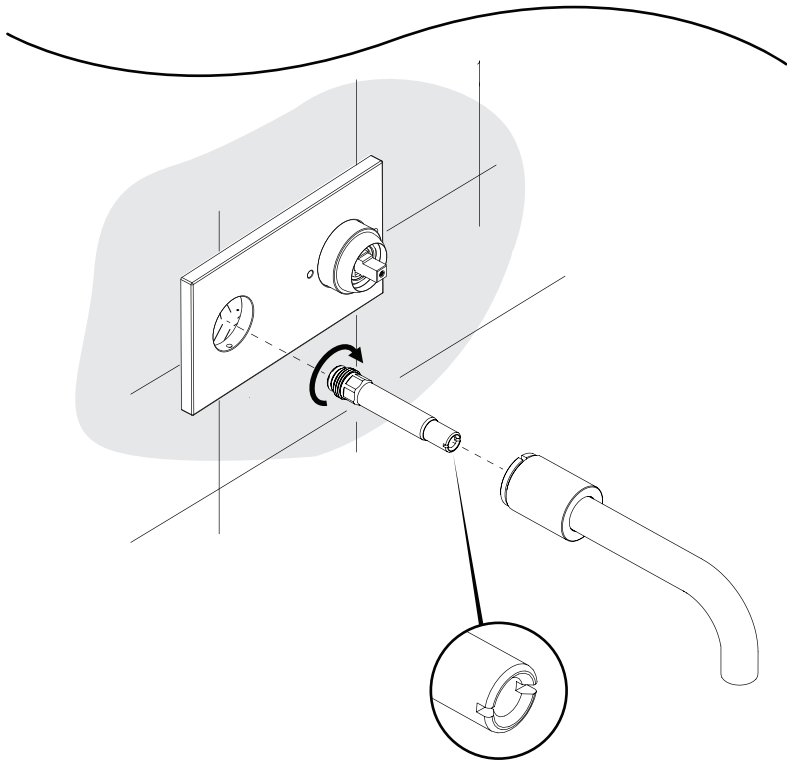
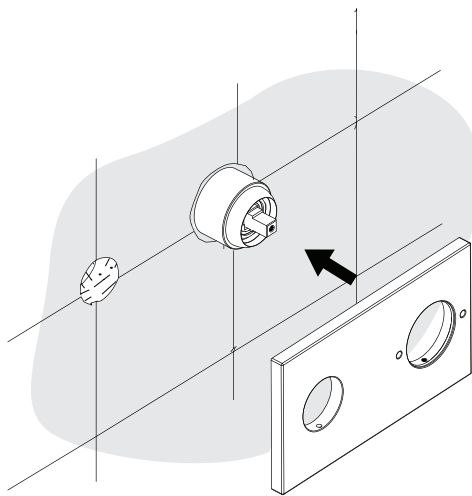
If you need assistance with installation, replacement parts or have any questions regarding your Rubinet product, please call a Customer Service representative at: 905-851-6781 toll free 1-800-461-5901 or visit **[www.rubinet.com](http://www.rubinet.com)**



1

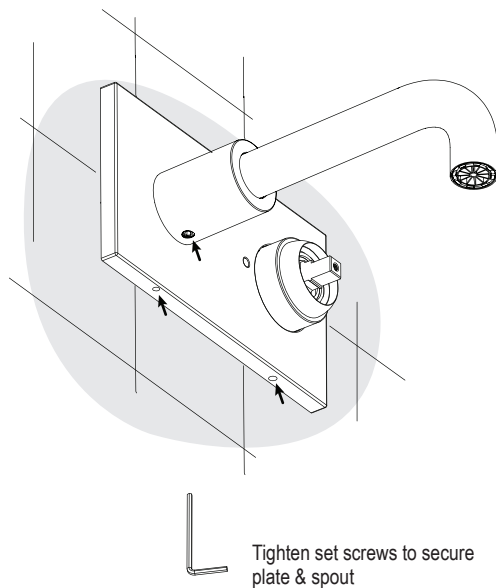
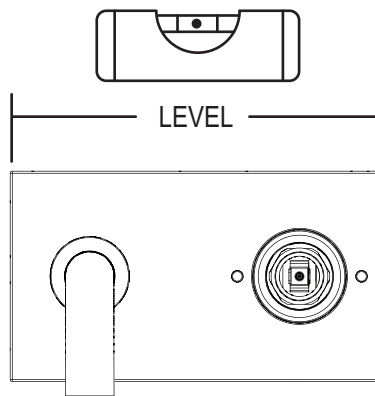


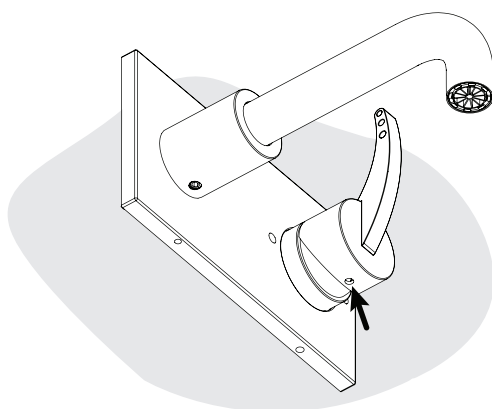
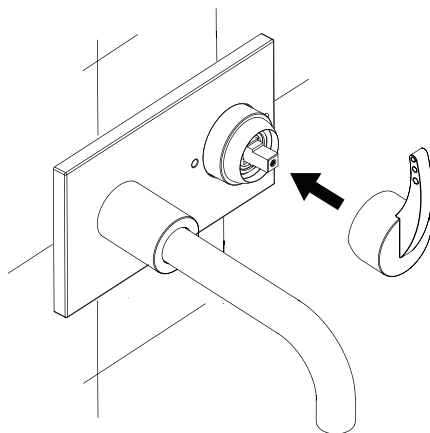
2



Use notch to screw in the slip fit shank

3





Tighten set screws to  
secure handle

**\* Aearator Removal**

