

ASSEMBLY INSTRUCTION**1JHOL****WALL MOUNT SINGLE CONTROL LAVATORY SET****1JHOL****1JHLL****REMOVAL OF FAUCET:**

Always turn the water supply off before removing the existing faucet or disassembling a valve. Open both faucet handles to relieve water pressure and to ensure that the water has been successfully turned off.

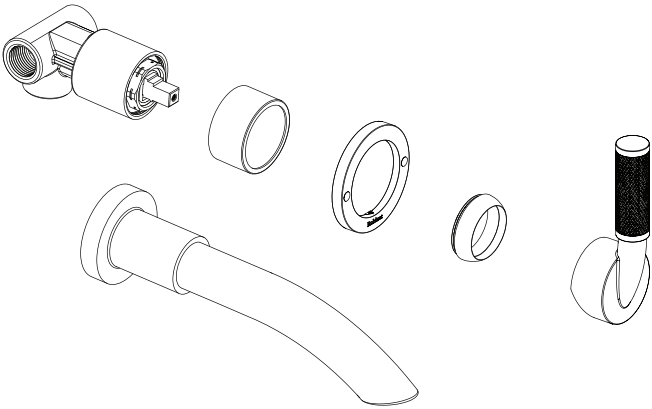
CARE OF FAUCET:

The use of warm water and a soft cloth is all that is required to clean Rubinet products. The patina of our living finishes (Oil Rubbed Bronze & Tuscan Brass) will change as a result of normal use. Applying Mineral Oil on occasion will create a softer look, subtle color changes and character.

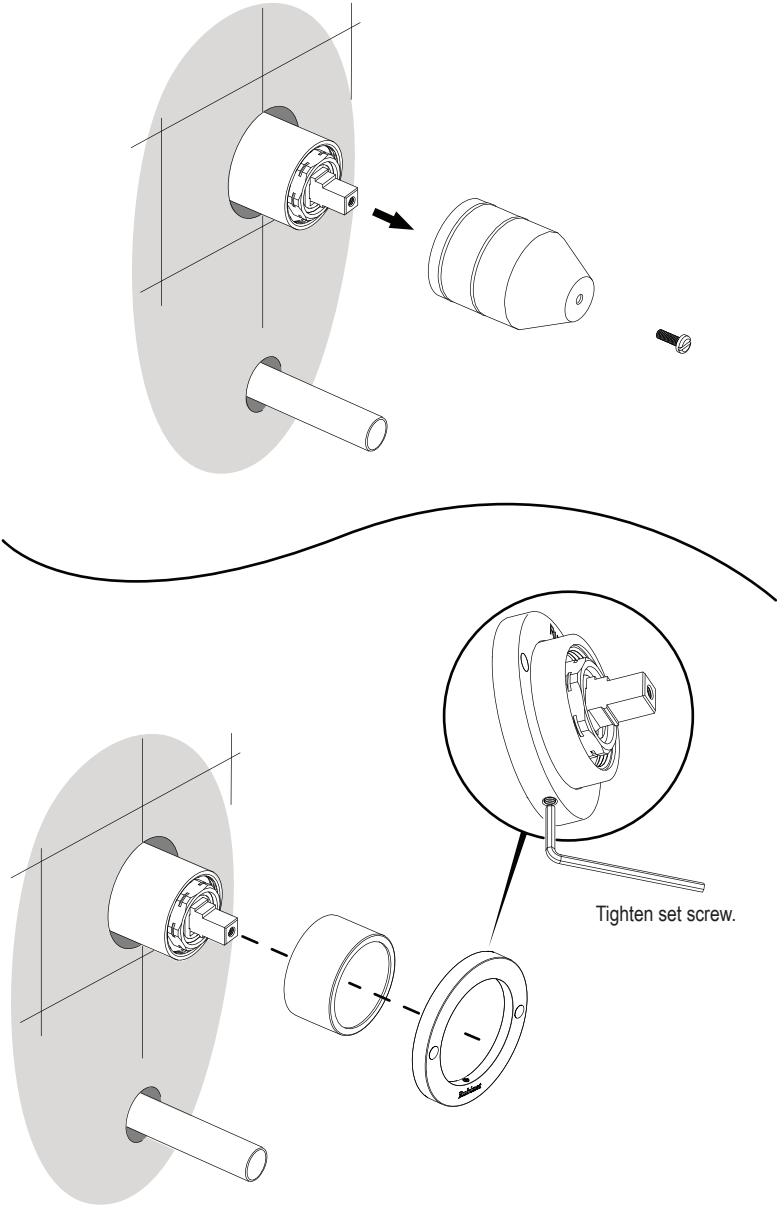
CONTACT US:

If you need assistance with installation, replacement parts or have any questions regarding your Rubinet product, please call a Customer Service representative at: 905-851-6781 toll free 1-800-461-5901 or visit **www.rubinet.com**

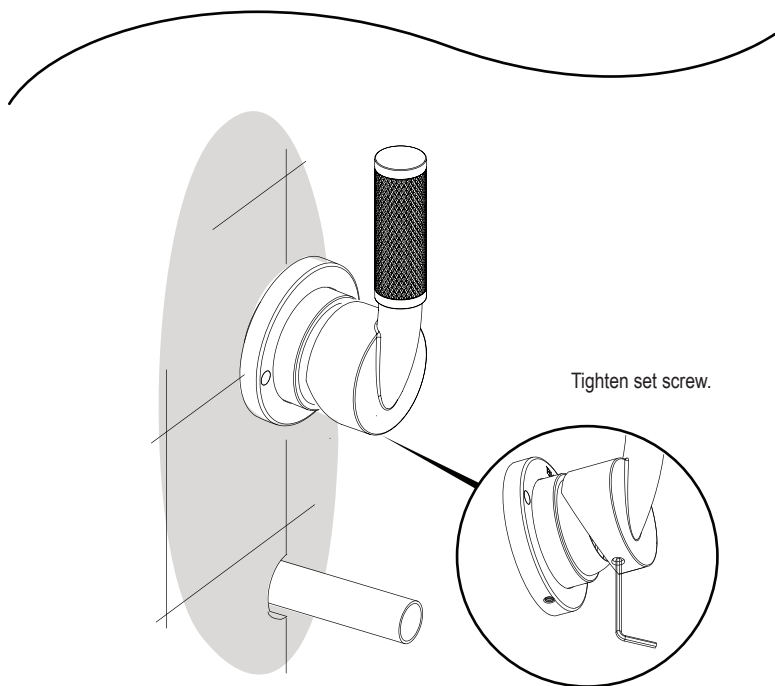
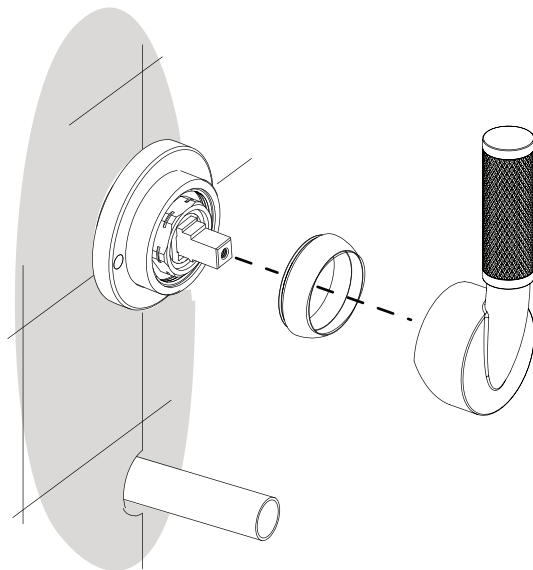
1JR100
Wall Mount Single Control
Lavatory Rough-in



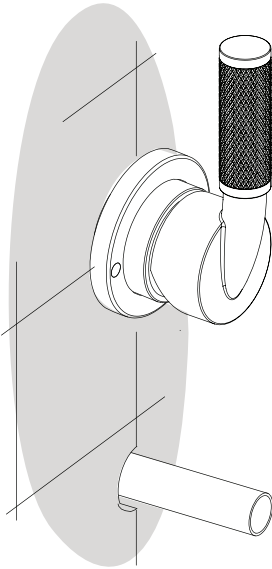
1



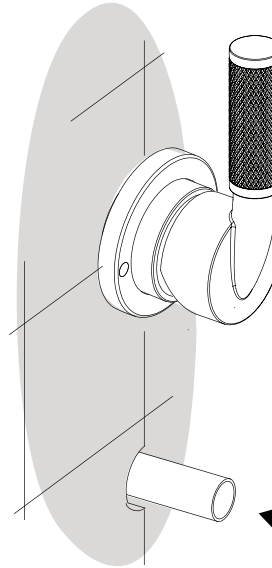
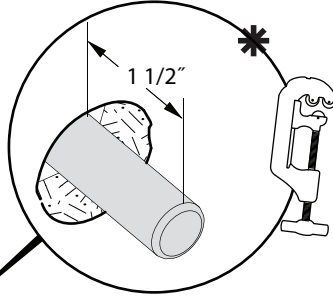
2



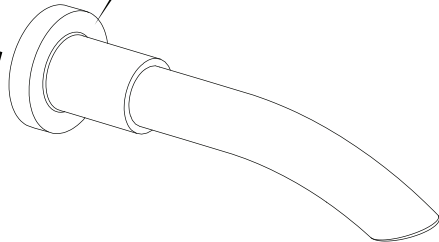
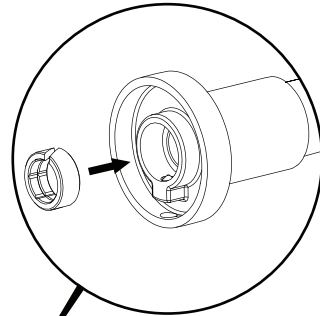
3

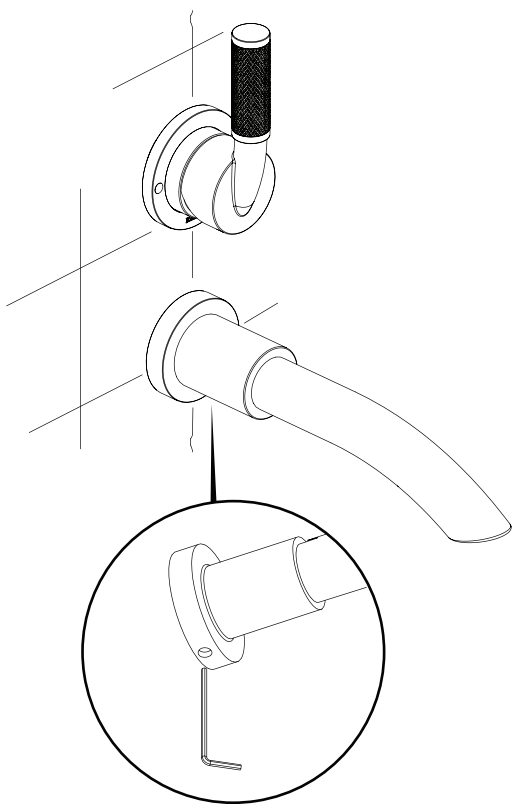


* Cut the Slip-Fit Shank 1 1/2" long from the finished wall and **remove any burr's** before installing the Wall Spout.

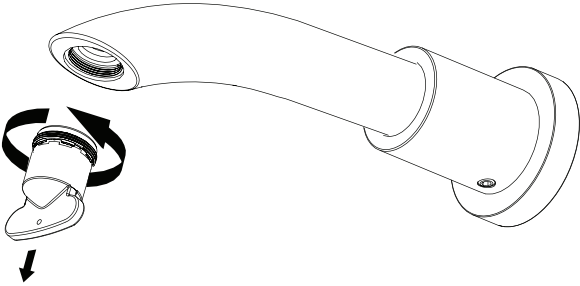
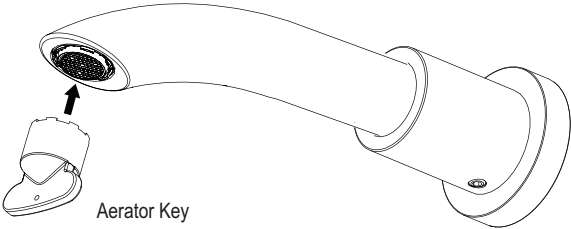


Spout ring pre-assembled





Tighten set screw.



Turn counter-clock wise to unscrew.