

ASSEMBLY INSTRUCTION**1GHOL - R****WALL MOUNT LAVATORY SET****1GHOL****1GHLL****1GHOR****1GHLR****REMOVAL OF FAUCET:**

Always turn the water supply off before removing the existing faucet or disassembling a valve. Open both faucet handles to relieve water pressure and to ensure that the water has been successfully turned off.

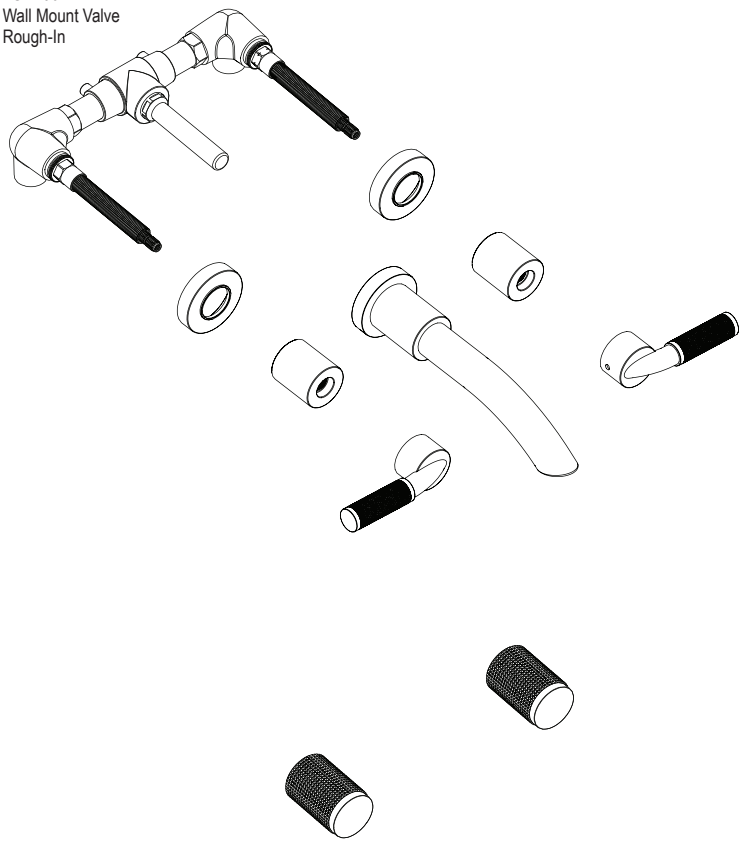
CARE OF FAUCET:

The use of warm water and a soft cloth is all that is required to clean Rubinet products. The patina of our living finishes (Oil Rubbed Bronze & Tuscan Brass) will change as a result of normal use. Applying Mineral Oil on occasion will create a softer look, subtle color changes and character.

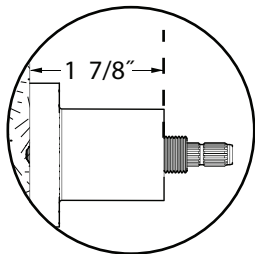
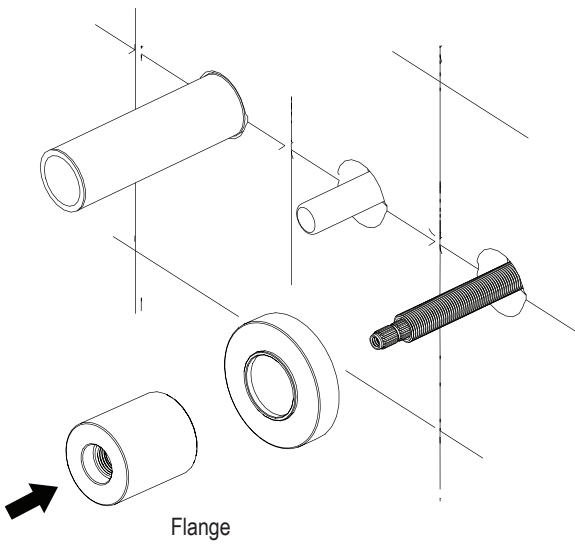
CONTACT US:

If you need assistance with installation, replacement parts or have any questions regarding your Rubinet product, please call a Customer Service representative at: 905-851-6781 toll free 1-800-461-5901 or visit **www.rubinet.com**

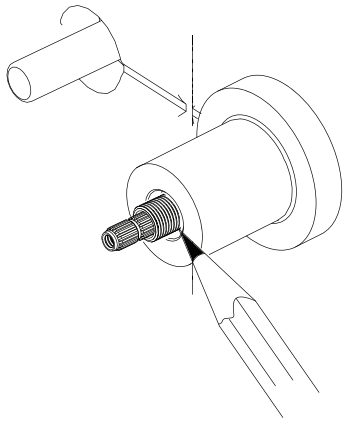
1GR100
Wall Mount Valve
Rough-In



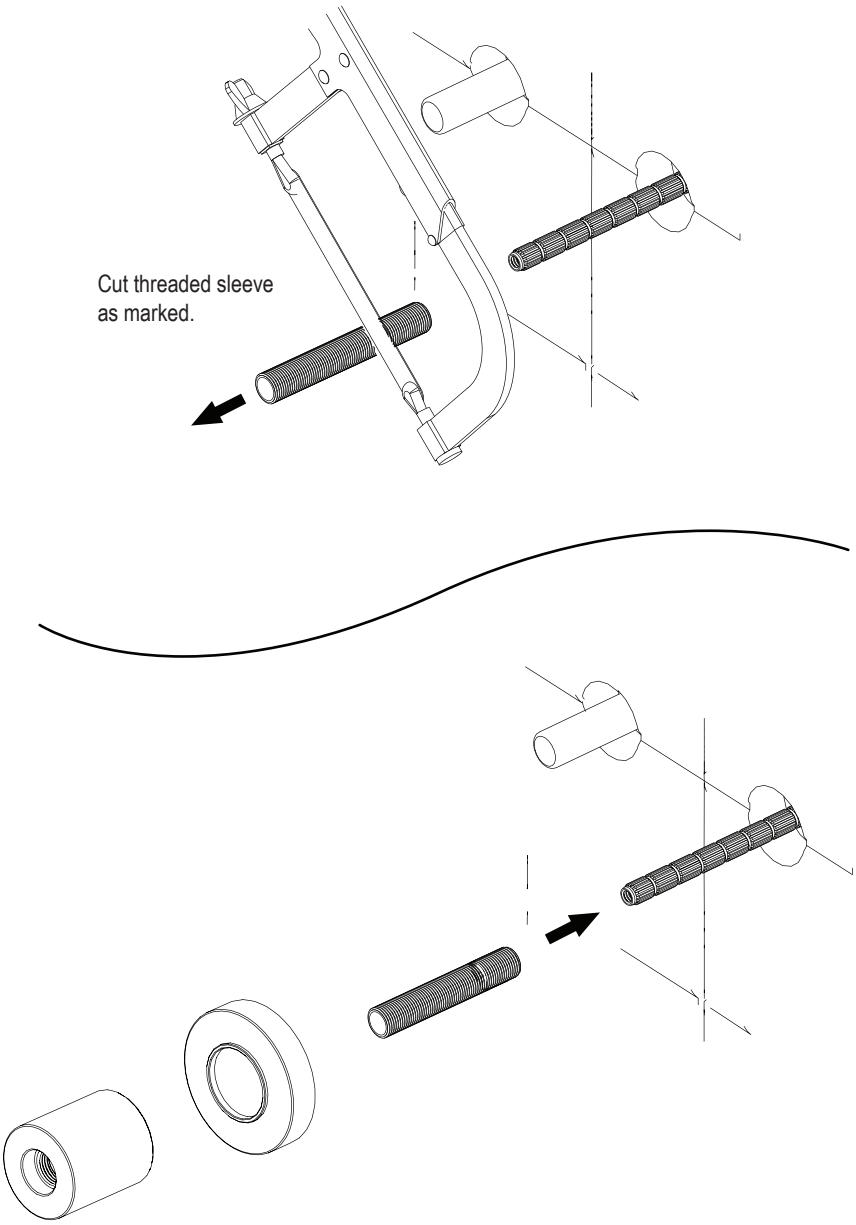
1



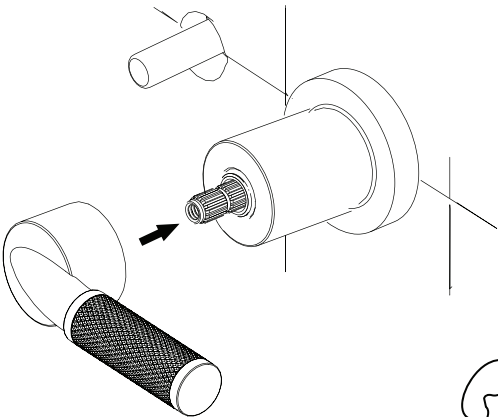
MUST CUT FLUSH
TO THE FLANGE TRIM
* $1 \frac{7}{8}"$ (47.5mm)
from the finished wall



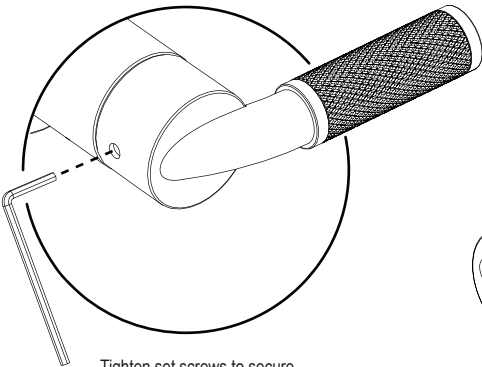
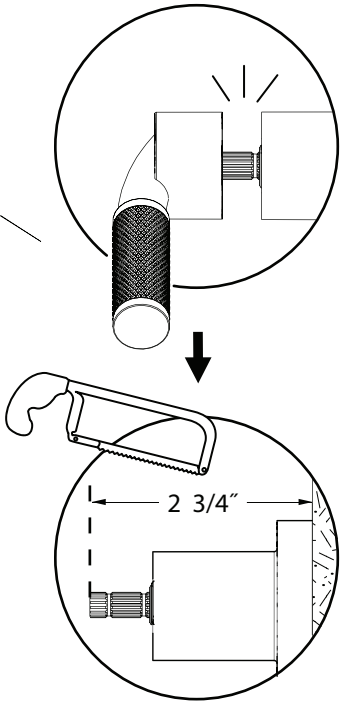
Cut threaded sleeve
as marked.



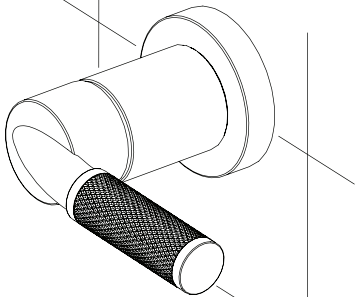
IF THE HANDLE DOES NOT FIT



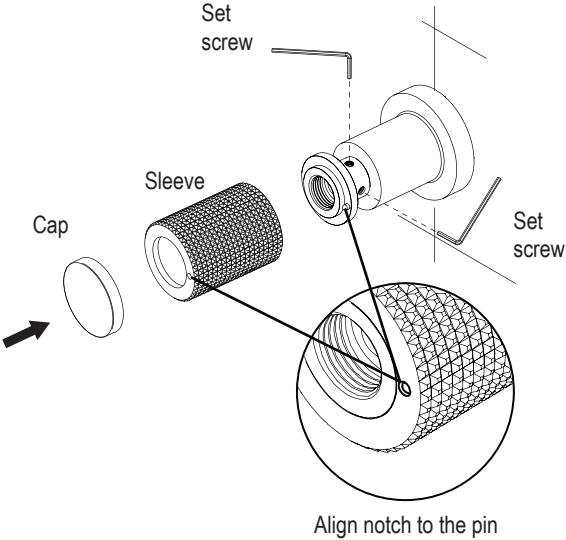
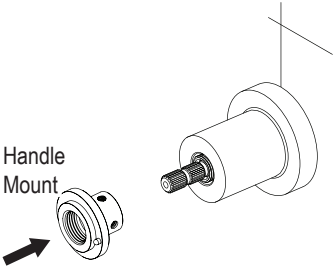
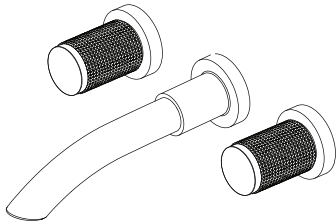
Place handle on the spline.

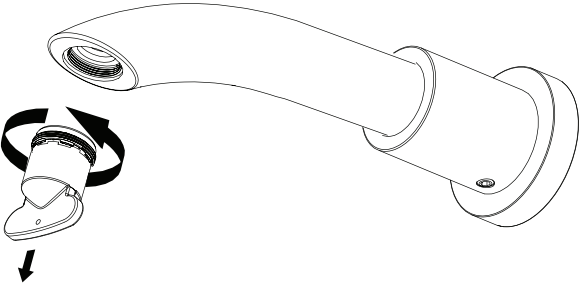
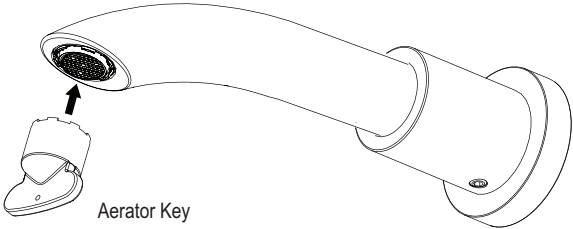


Tighten set screws to secure



ROUND HANDLE INSTALLATION





Turn counter-clock wise to unscrew.