

ASSEMBLY INSTRUCTION**1AHOL or R****WIDESPREAD LAVATORY SET****1AHOL****1AHL****1AHOR****1AHLR****REMOVAL OF FAUCET:**

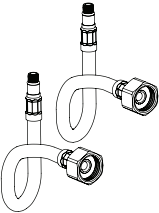
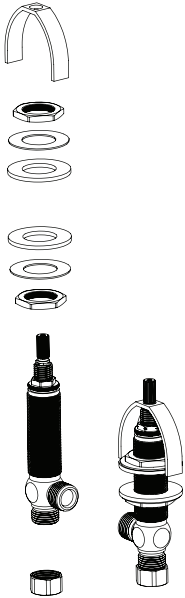
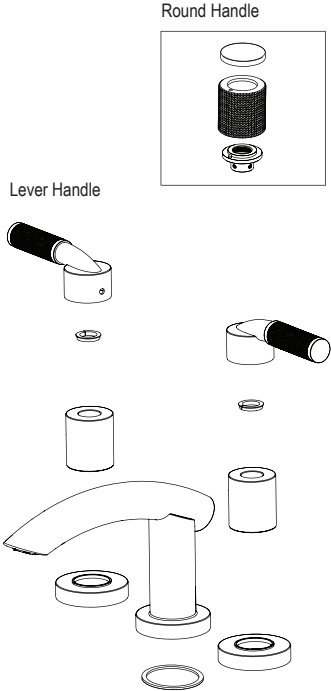
Always turn the water supply off before removing the existing faucet or disassembling a valve. Open both faucet handles to relieve water pressure and to ensure that the water has been successfully turned off.

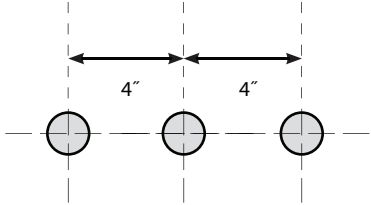
CARE OF FAUCET:

The use of warm water and a soft cloth is all that is required to clean Rubinet products. The patina of our living finishes (Oil Rubbed Bronze & Tuscan Brass) will change as a result of normal use. Applying Mineral Oil on occasion will create a softer look, subtle color changes and character.

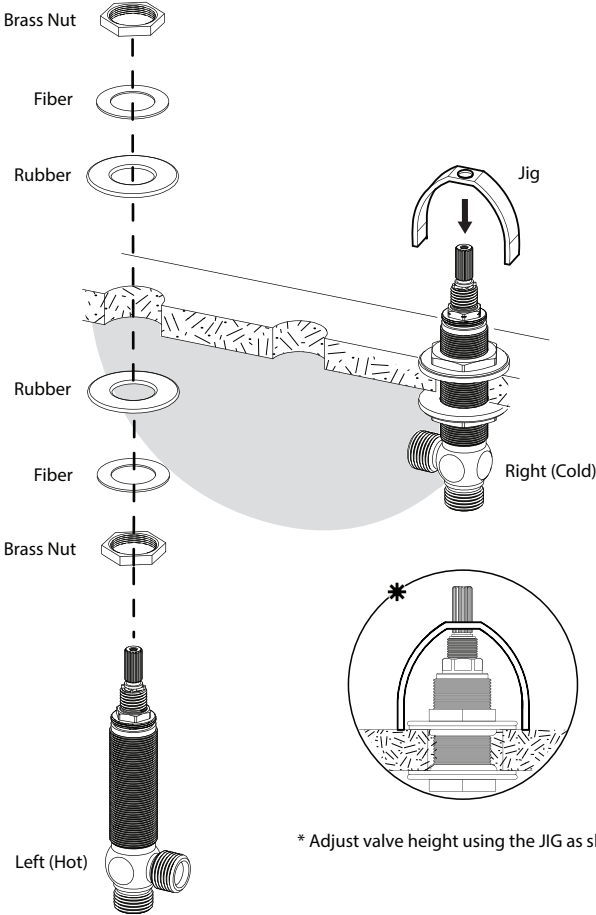
CONTACT US:

If you need assistance with installation, replacement parts or have any questions regarding your Rubinet product, please call a Customer Service representative at: 905-851-6781 toll free 1-800-461-5901 or visit www.rubinet.com

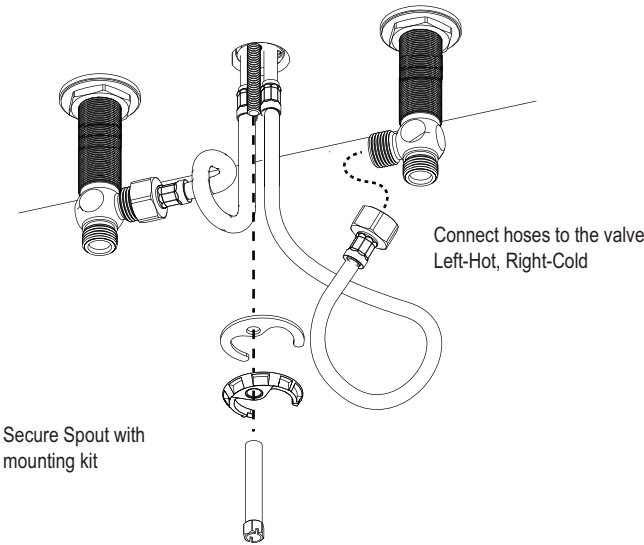
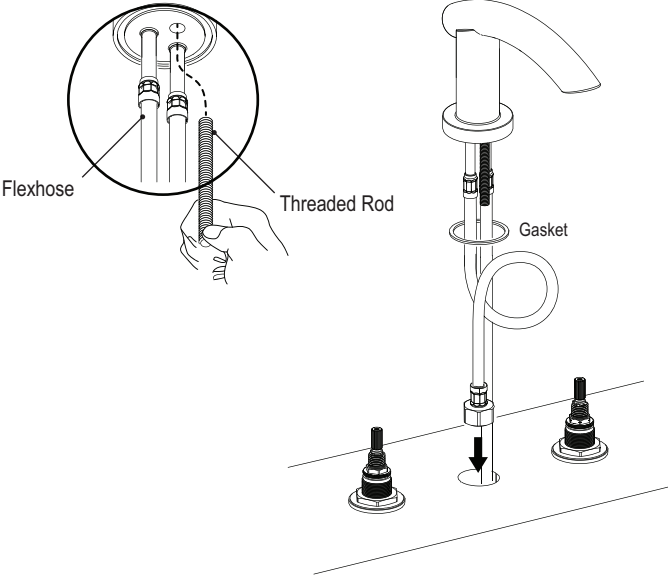


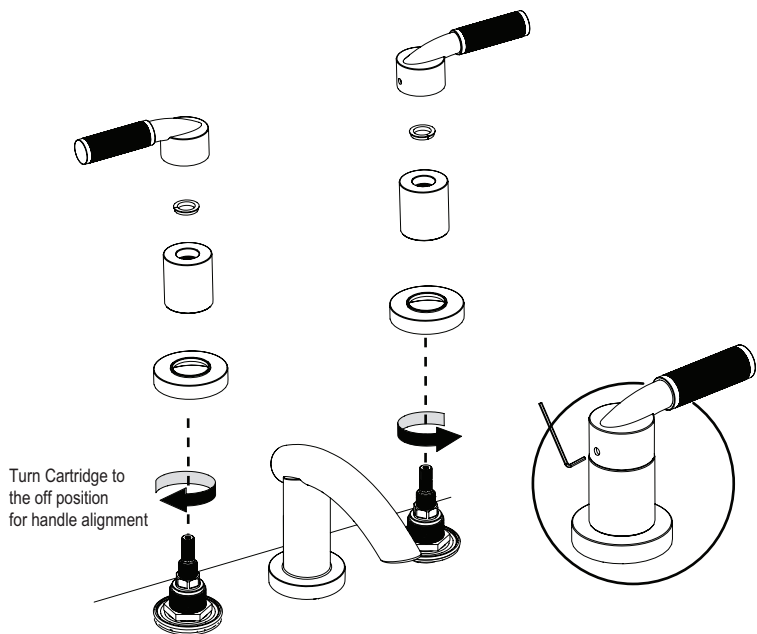


HOLE SIZE
Ø 1 3/8"

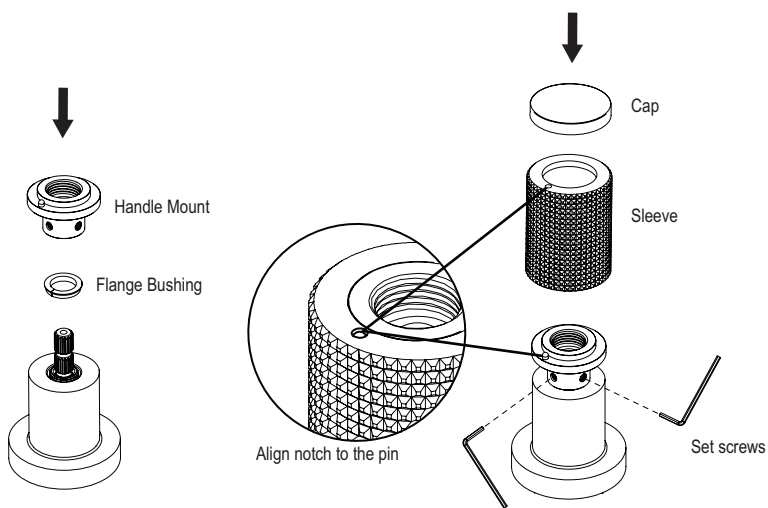


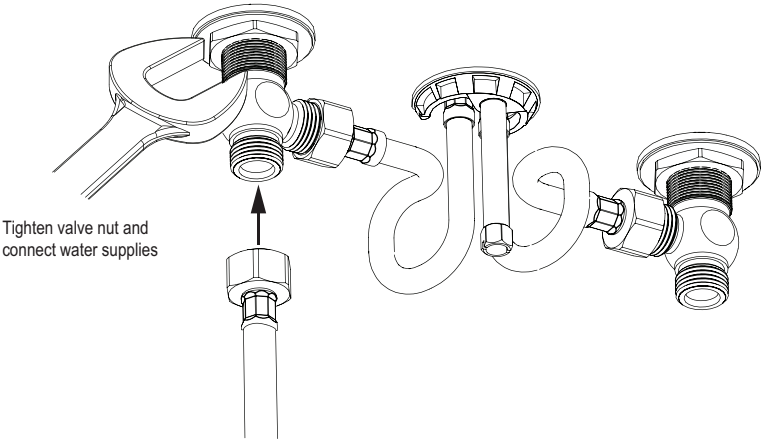
* Adjust valve height using the JIG as shown



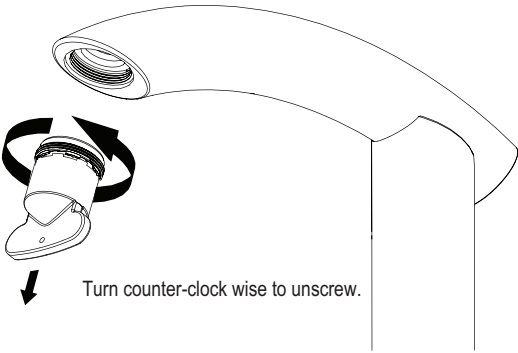
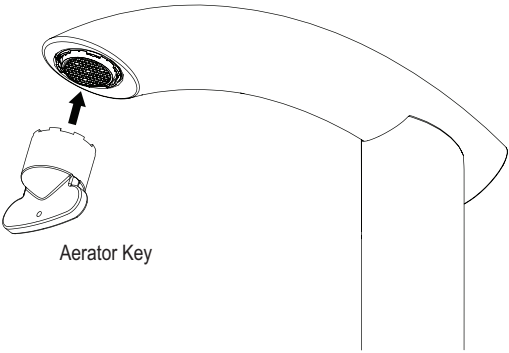


ROUND HANDLE INSTALLATION





AERATOR REMOVAL



*Remove aerator to clean any dirt and debris. Then place it back into the spout.