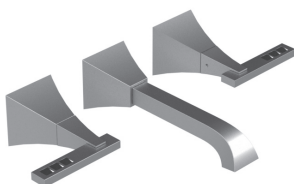
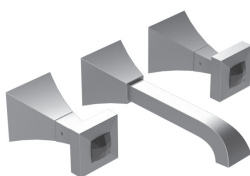
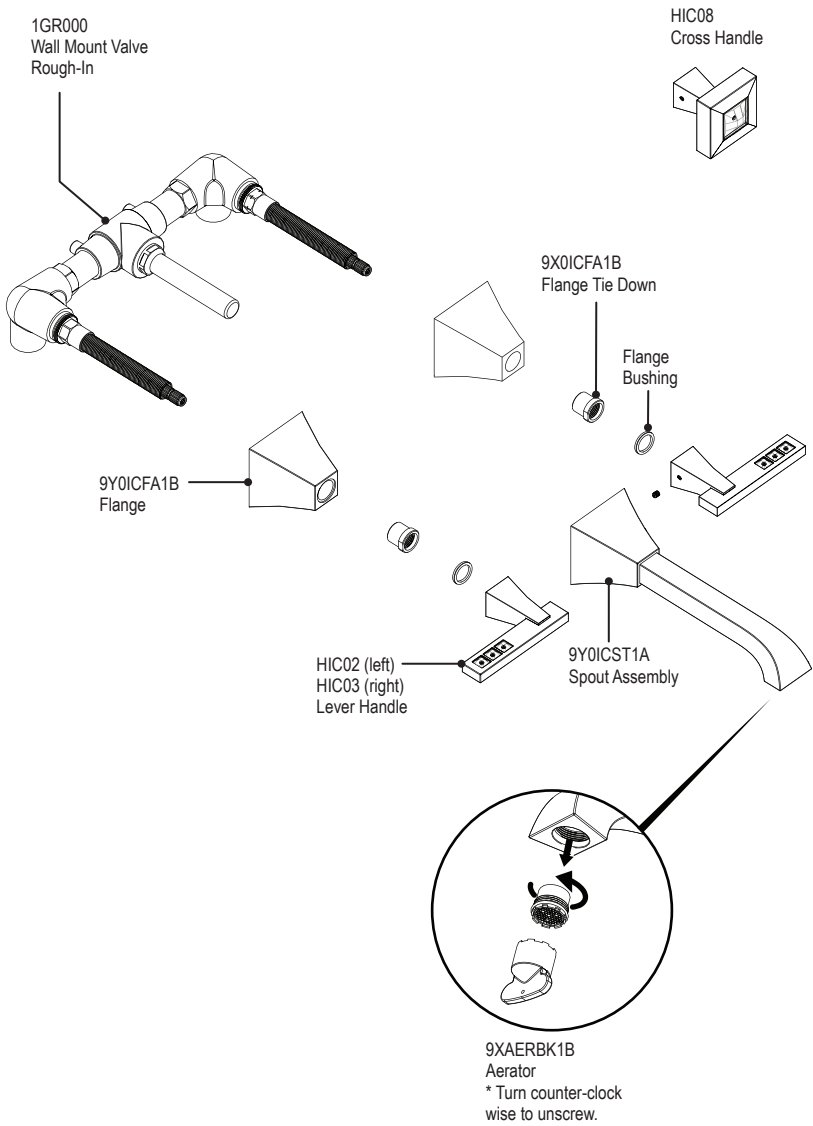


**ASSEMBLY INSTRUCTION****1GICL or Q****WALL MOUNT LAVATORY SET****1GICL****1GICQ****REMOVAL OF FAUCET:**

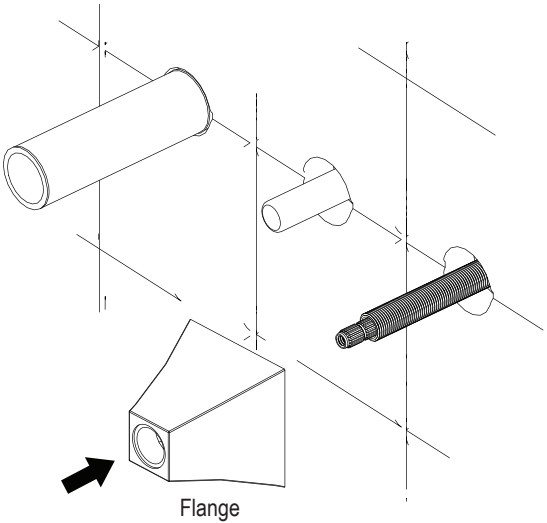
Always turn the water supply off before removing the existing faucet or disassembling a valve. Open both faucet handles to relieve water pressure and to ensure that the water has been successfully turned off.

**CARE OF FAUCET:**

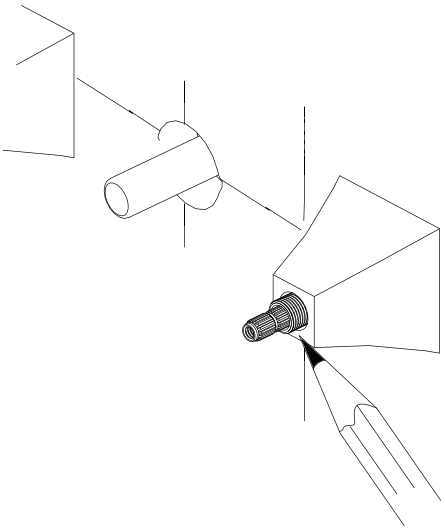
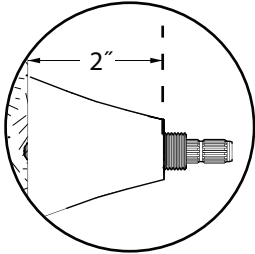
The use of warm water and a soft cloth is all that is required to clean Rubinet products. The patina of our living finishes (Oil Rubbed Bronze & Tuscan Brass) will change as a result of normal use. Applying Mineral Oil on occasion will create a softer look, subtle color changes and character.

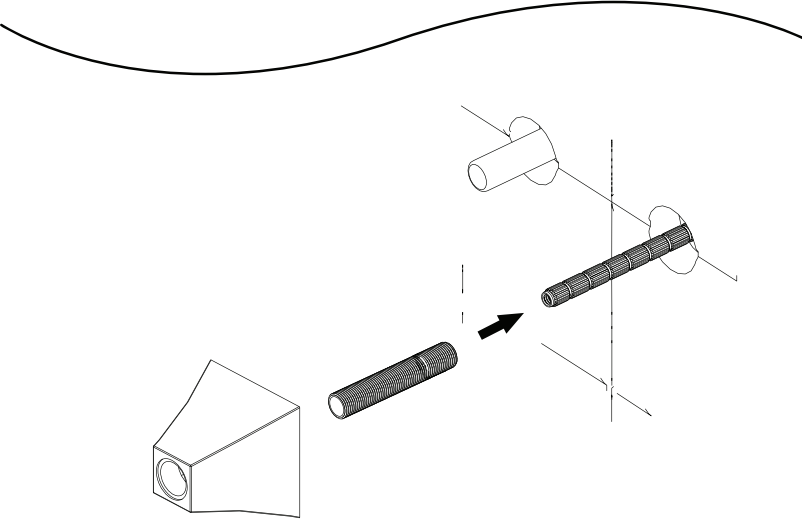
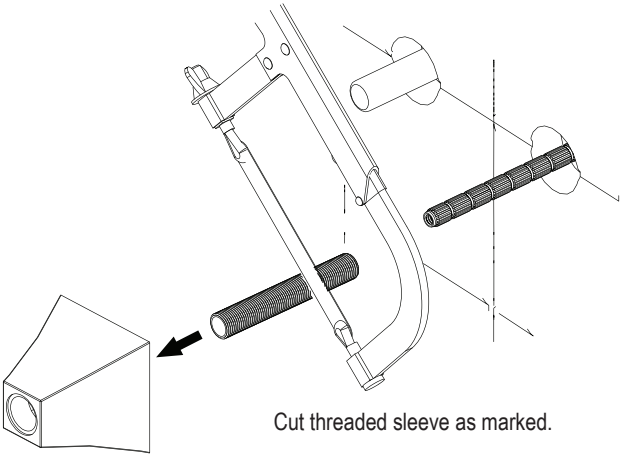


1

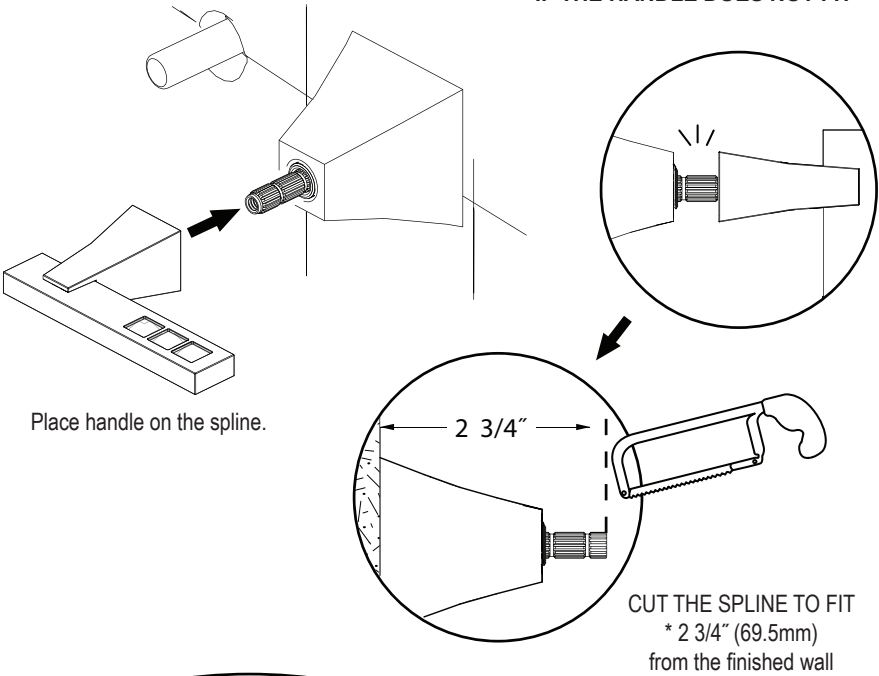


**MUST CUT FLUSH  
TO THE FLANGE TRIM  
\* 2" (50mm)  
from the finished wall**

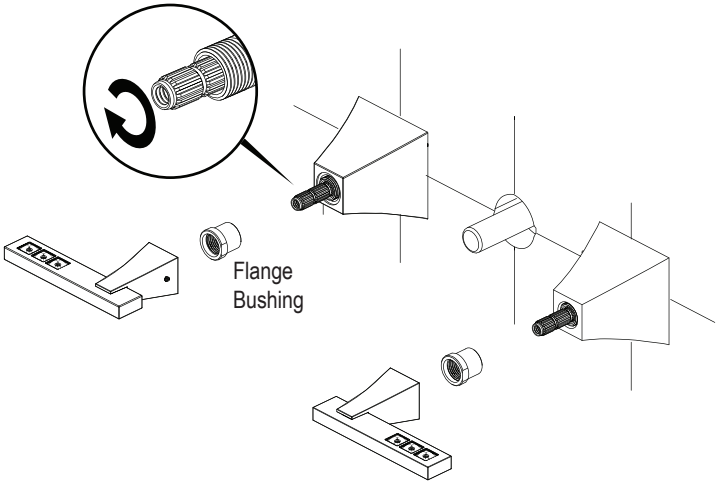


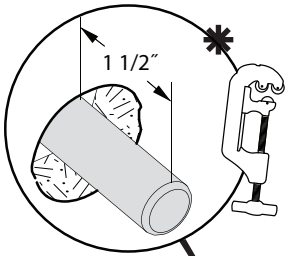


IF THE HANDLE DOES NOT FIT

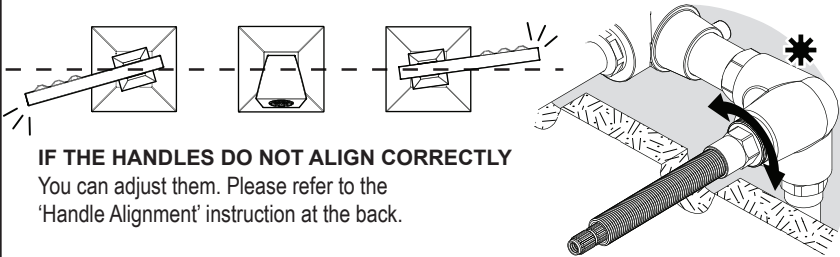
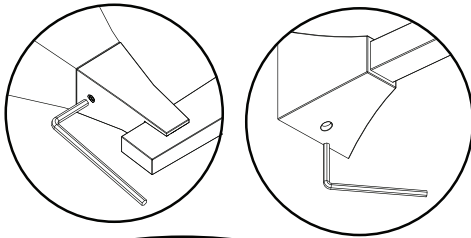
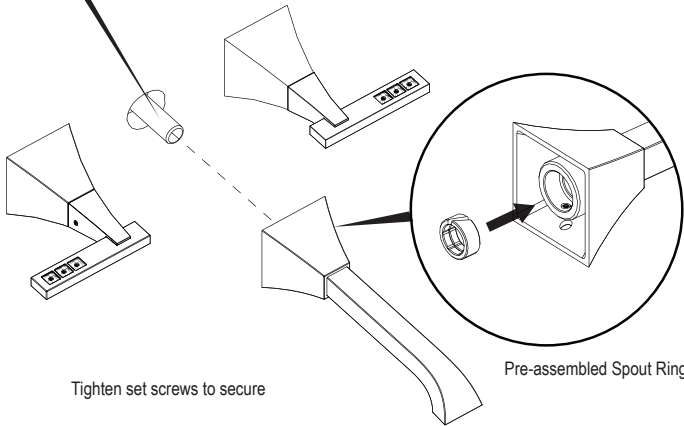


Turn each cartridge  
splines into **OFF** position  
before installing handles

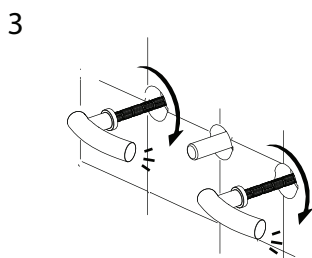
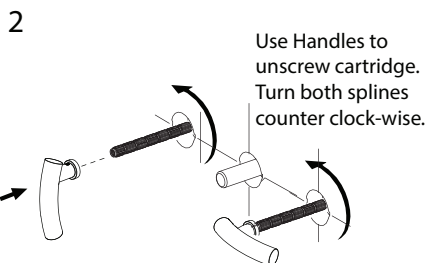
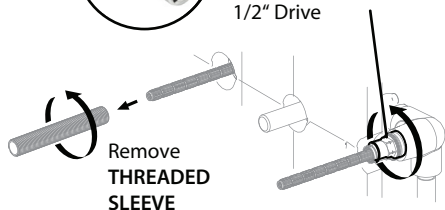




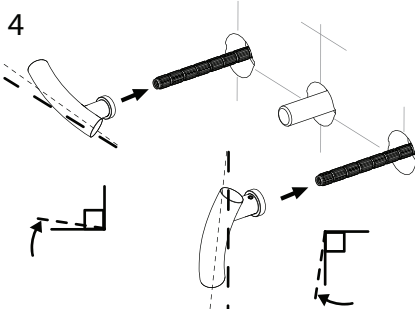
\* Cut the Slip-Fit Shank 1 1/2" long from the finished wall and **MUST REMOVE ANY BURRS** before installing the Wall Spout.



## HANDLE ALIGNMENT (1G)

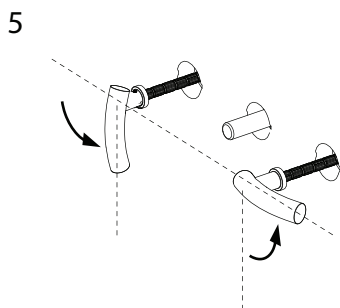


Once cartridge valves are loose, screw them back into the faucet using the handle. Stop when you feel a noticeable resistance. Then remove handles.

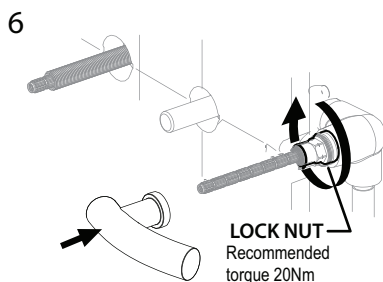


Replace Left Handle (hot) **one tooth off** from the **OFF** position as shown.

And Right Handle (cold) **one tooth off** from the **ON** position as shown.



Turn the handles to the desired alignment. (This will unscrew the cartridge) This adjustment should not be more than 25°.



Tighten Lock Nut using 17mm **Deep Socket**. wrench to secure cartridge valve position.

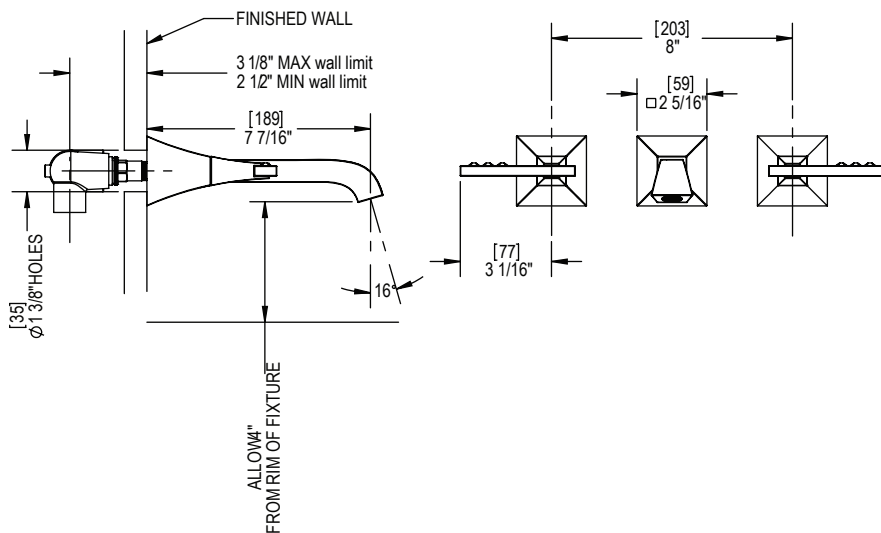
\*Use handle to hold spline while tightening.

#### FEATURES:

- Brass construction with choice of 21 finishes
- Two handles: Plain or with optional Black or Clear Swarovski\* crystal inlays
- Quarter-turn ceramic disk cartridges
- 1.5 gpm @ 60 psi (Helps meet CalGreen regulation)

#### APPROVAL:

- AB1953 / NSF61
- ASME A 112.18.1
- CSA B125.1



#### CONTACT US:

If you need assistance with installation, replacement parts or have any questions regarding your Rubinet product, please call a Customer Service representative at: 905-851-6781 toll free 1-800-461-5901 or visit [www.rubinet.com](http://www.rubinet.com)