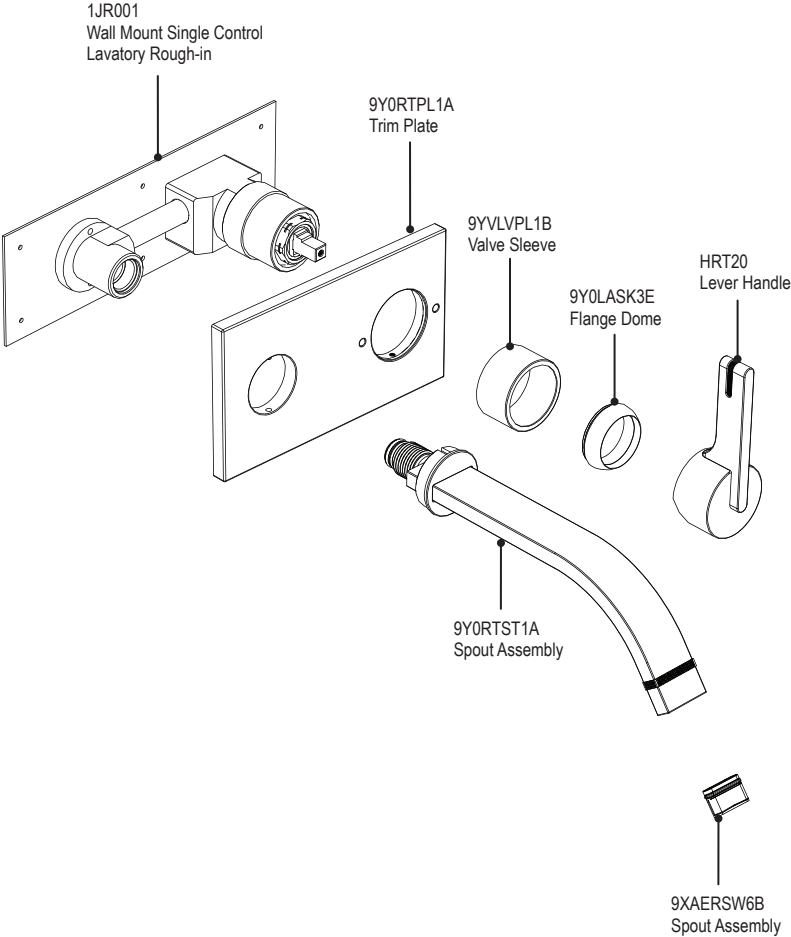


ASSEMBLY INSTRUCTION**1JRTL****WALL MOUNT SINGLE CONTROL LAVATORY SET****1JRTL****REMOVAL OF FAUCET:**

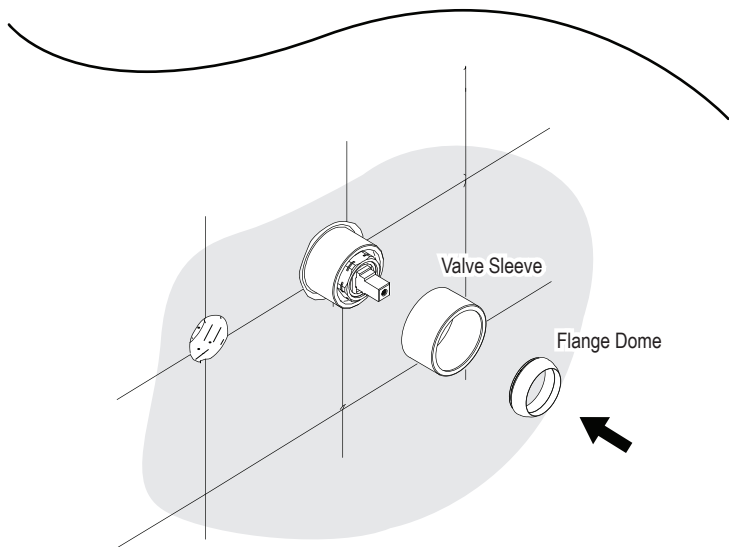
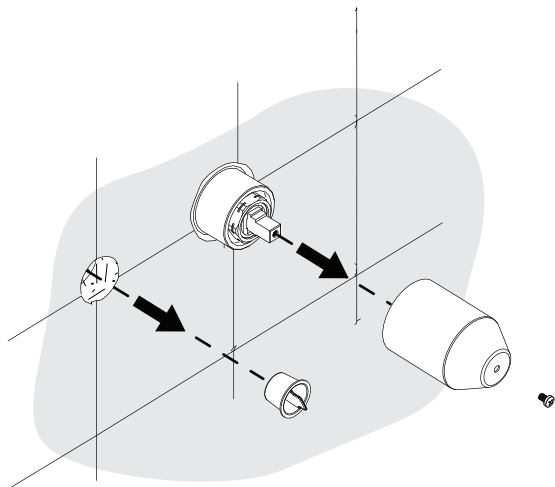
Always turn the water supply off before removing the existing faucet or disassembling a valve. Open both faucet handles to relieve water pressure and to ensure that the water has been successfully turned off.

CARE OF FAUCET:

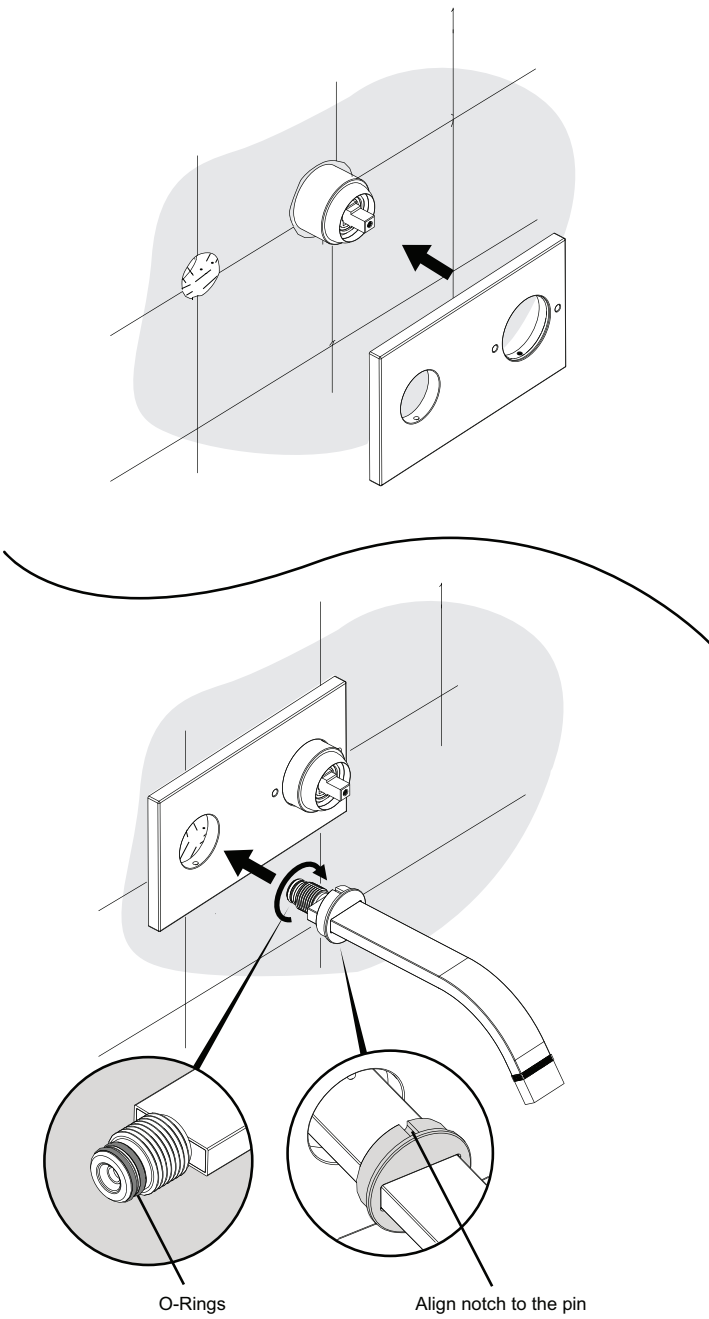
The use of warm water and a soft cloth is all that is required to clean Rubinet products. The patina of our living finishes (Oil Rubbed Bronze & Tuscan Brass) will change as a result of normal use. Applying Mineral Oil on occasion will create a softer look, subtle color changes and character.

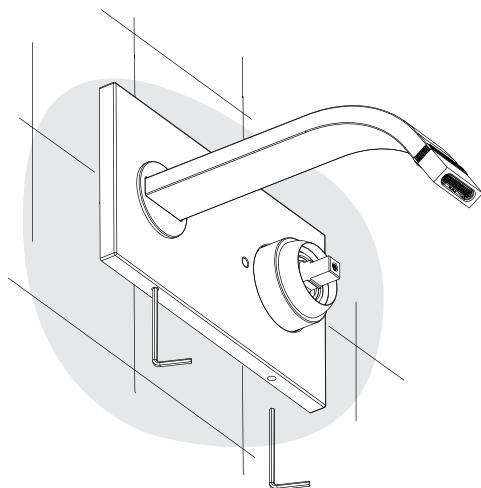
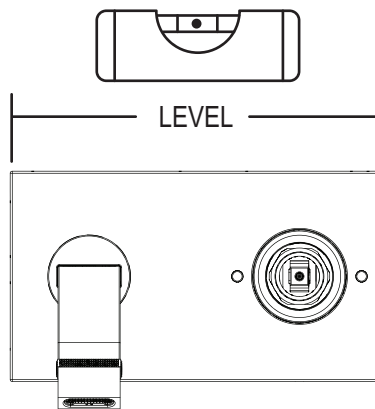


1

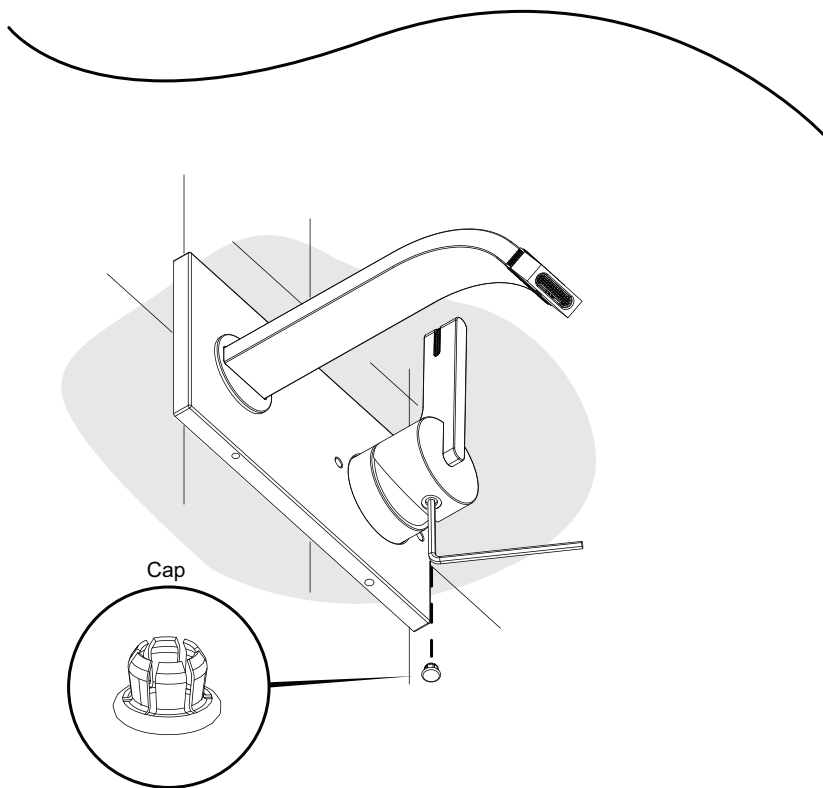
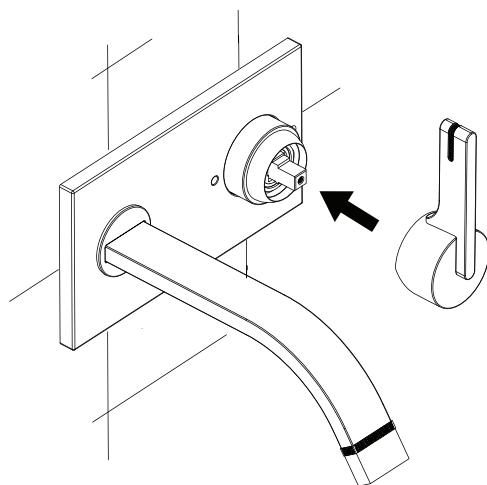


2

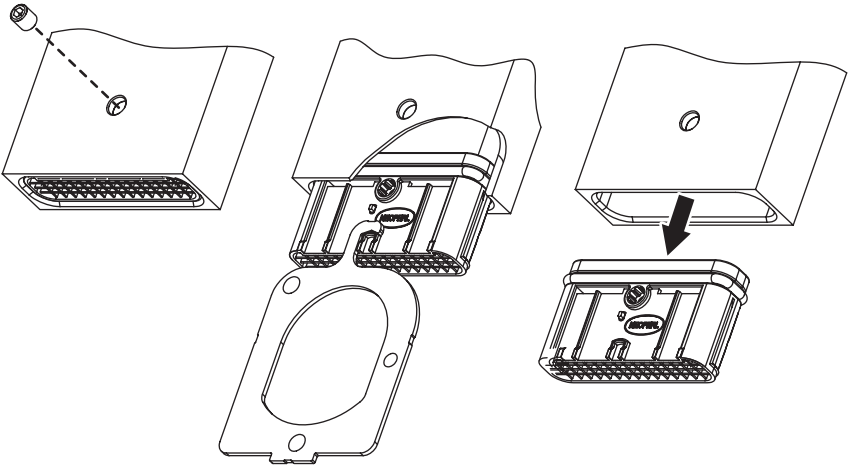




Secure plate by tightening set screws.

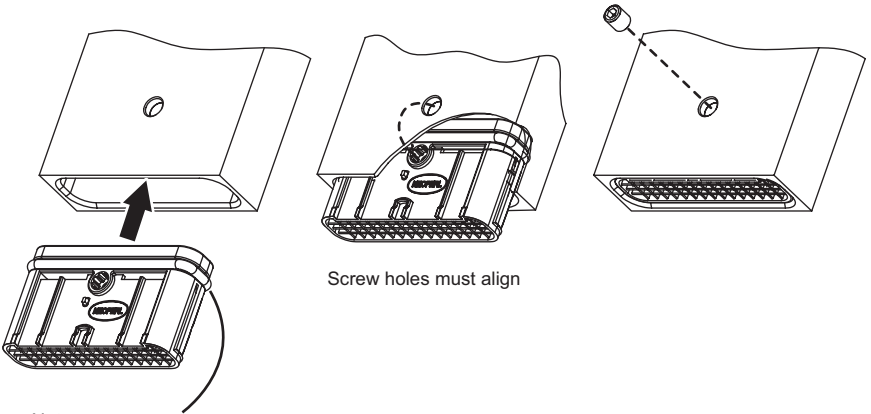


AERATOR DISASSEMBLY



DISASSEMBLING KEY

AERATOR REASSEMBLY



Screw holes must align

Note:
For easy installation,
use soapy water on seal ring
DO NOT USE GREASE