

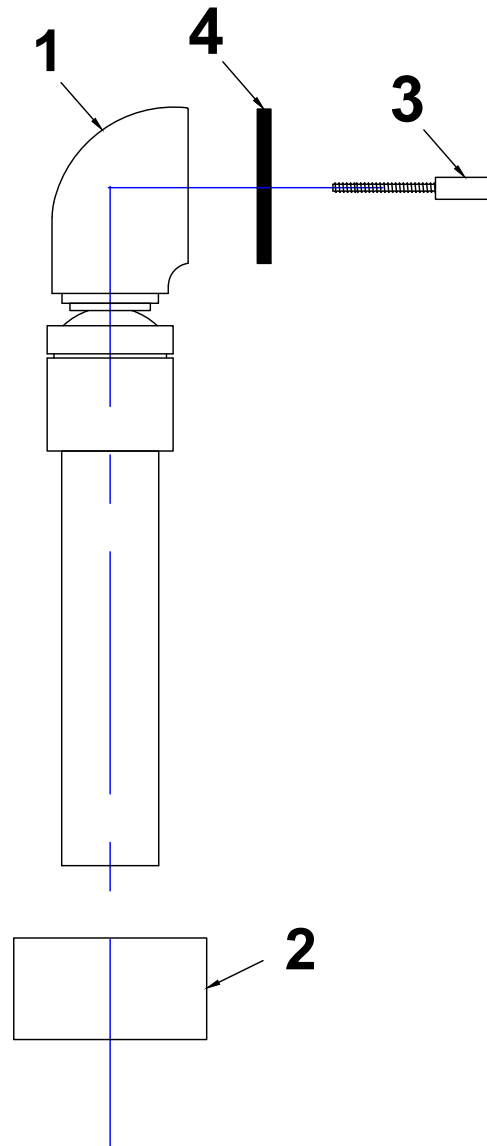
INSTALLATION INSTRUCTIONS

Pivot Neck
Part #: 399-

JACLO[®]
Confidence from start to finish.[®]



PARTS



	PART NUMBER	QTY.	DESCRIPTION
1	399-L-***	1	Pivot Neck
2	Escutcheon	1	Decorative Escutcheon
3	TUB-FP-EXT-RGH	1	Brass 1 1/2" x 1 1/2" Tee
4	Gasket	1	Overflow gasket

****NOTE: ENSURE THAT TRIM (ORDERED SEPARATELY) IS PRESENT FOR INSTALLATION AS IT IS REQUIRED FOR FITTING**

INSTALLATION

1. Test fit all Pivot Neck (1) by temporarily fitting in tub.
2. Measure tubes and cut to size.
3. Install Pivot Neck (1) to tub at overflow and affix using overflow trim piece. *The overflow adapter (7) is included for extra thick tubs.*
4. Install to waste connection using Escutcheon (2).

To learn more about JACLO's warranty, please visit [**jaclo.com**](http://jaclo.com)