

501-54



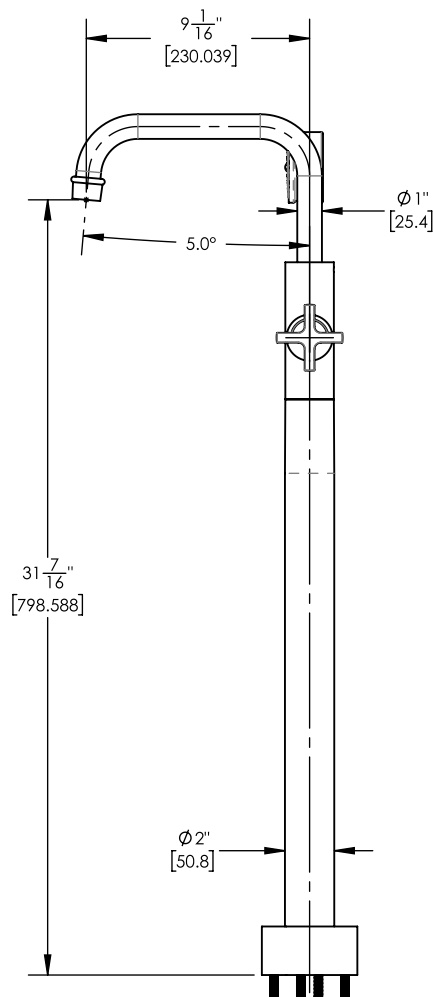
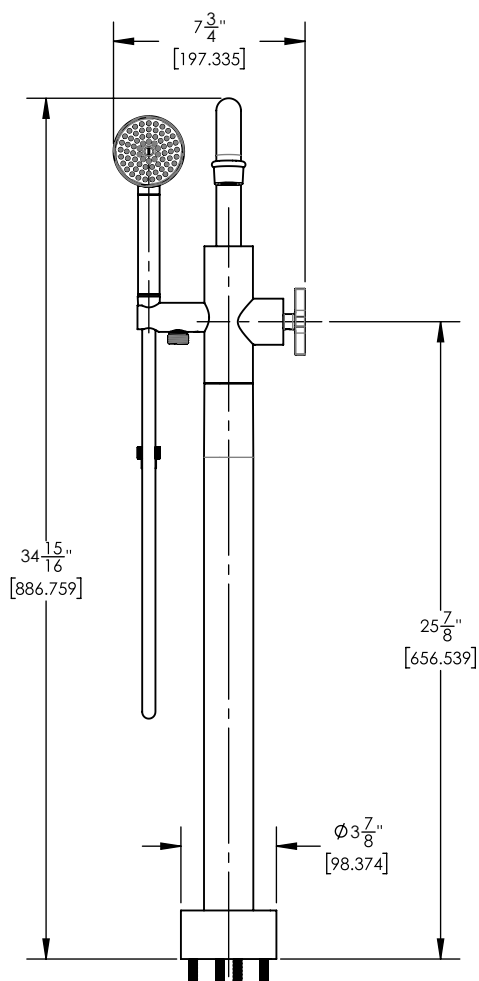
## ■ PRODUCT FEATURES

- Style: Traditional
- Collection: Hex Modern
- Temperature Controlled by Handle
- Integrated Diverter
- Cross Handle
- 

## ■ TECHNICAL DETAILS

Hand Shower Flow Rate: 1.8 gpm  
 Spout Flow Rate: Full Flow  
 Hand Shower Hose Length: 59"  
 Spout Reach: 9 1/16"  
 Water Pressure Maximum: 85 PSI  
 Water Pressure Minimum: 20 PSI  
 Water Pressure Recommended: 60 PSI  
**NO VALVE REQUIRED**

## ■ PRODUCT DIMENSIONS



[www.phylrich.com](http://www.phylrich.com)

1261 Logan Avenue, Costa Mesa, California 92626.  
 Phone: 714.361.4800 Fax: 714.617.3120



**CODES & STANDARDS**

ASME A112.181/ CSA B1251, ASME 112.18.2/ CSA B125.2, ANSI NSF, CEC

## WARRANTY

Mechanical Warranty: 10 Years from date of purchase.  
 Finish Warranty: See catalog for further information.

Rev-

NOTE(S):  
1. PART NUMBER, "/00" DENOTES PART SHALL HAVE FINISH.

2. APPLY NSF COMPLIANT GREASE TO ANY O-RING, SEALING JOINTS, AND/OR PIVOTAL POINTS.

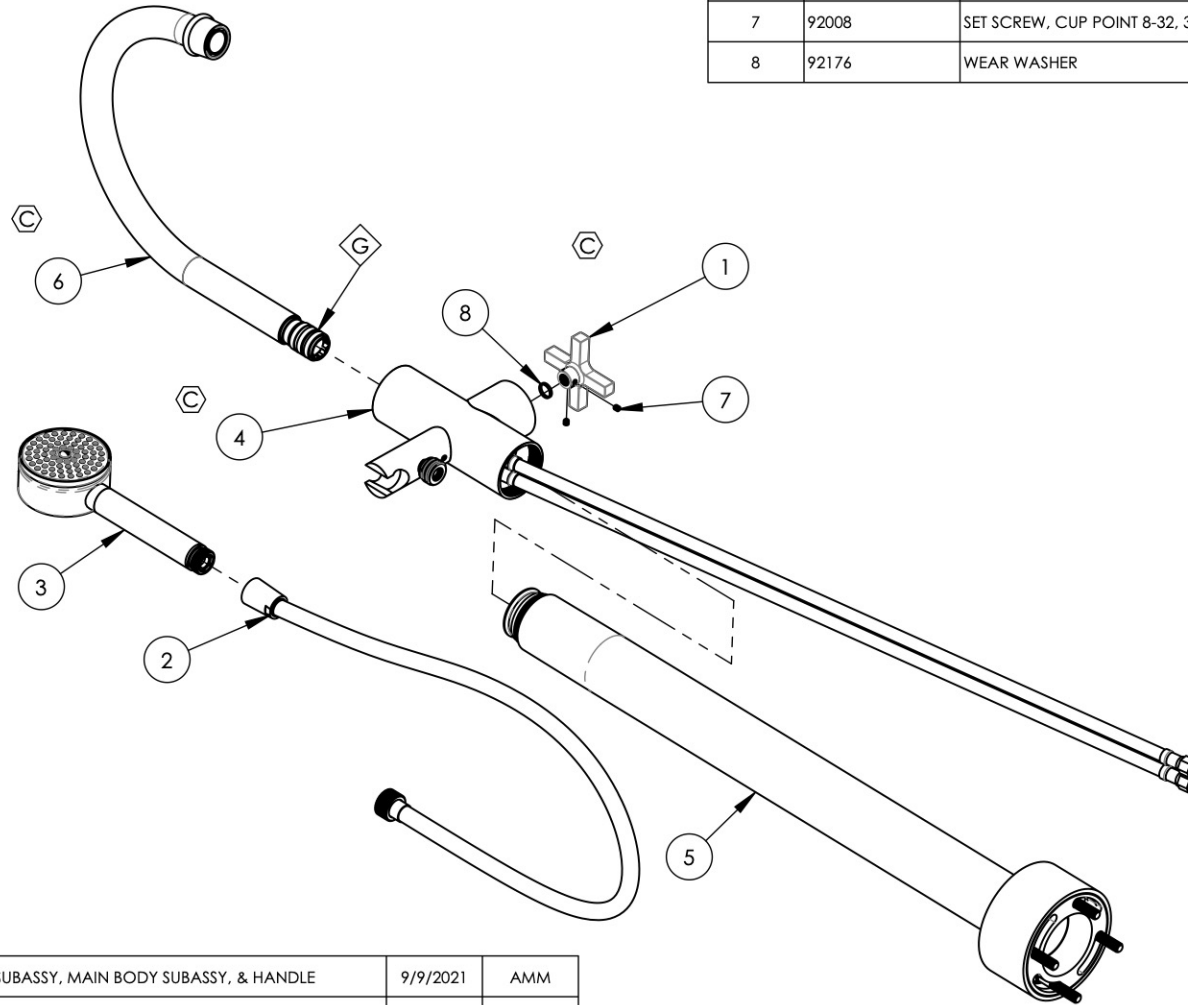
3. APPLY NSF COMPLIANT LOCTITE TO THREADED AREA.

4. APPLY NSF COMPLIANT REMOVABLE (BLUE) LOCTITE TO THREADED AREA.

5. SILVER SOLDER JOINTS SHALL BE FULLY WETTED VIA CAPILLARY ACTION AND COMPLETELY NON-POROUS.



ITEM NO.	PART NUMBER	DESCRIPTION	QTY.	
1	10633/00	HANDLE CROSS, CONTEMPORARY 16PT	1	
2	3-049/00	ASSY, HOSE KIT, HANDSHOWER	1	
3	3-066/00	HANDSHOWER, SINGLE FUNCTION STILO 70	1	
4	3-503/00	ASSY, MAIN BODY, TUB-FILLER	1	
5	3-504/00	ASSY, RISER & BASE, FLOOR MOUNT TUB FILLER	1	
6	3-564/00	ASSY, ARC SPOUT, FLOOR MOUNT TUB FILLER, HEX MODERN	1	
7	92008	SET SCREW, CUP POINT 8-32, 3/16" L.	2	
8	92176	WEAR WASHER	1	



C4, D3, D4	C	UPDATE SPOUT SUBASSY, MAIN BODY SUBASSY, & HANDLE	9/9/2021	AMM
ZONE	REV.	DESCRIPTION	DATE	APPROVED

#### REVISIONS

A	1261 LOGAN AVENUE COSTA MESA, CALIFORNIA 92626		<b>PHYLIRICH®</b>  Defining Luxury Since 1959	<b>PROPRIETARY AND CONFIDENTIAL</b> THE INFORMATION CONTAINED IN THIS DRAWING IS THE SOLE PROPERTY OF PHYLIRICH. ANY REPRODUCTION IN PART OR AS A WHOLE WITHOUT THE WRITTEN PERMISSION OF PHYLIRICH IS PROHIBITED. <b>DO NOT SCALE DRAWING</b>	<b>FLOOR MOUNT TUB FILLER W/ HANDSHOWER, ARCH SPOUT, CROSS, HEX MODERN</b>	SIZE <b>A</b>		ASM/PRT NO. <b>501-46/00</b>		REV <b>C</b>
	PHONE: 714.361.4800 FAX: 714.617.3120					SCALE: 1:6		WEIGHT: lbs.		

SCALE: 1:6		WEIGHT: lbs.		SHEET 1 OF 2	
------------	--	--------------	--	--------------	--

NOTE(S):  
1. PART NUMBER, "/00" DENOTES PART SHALL HAVE FINISH.

2. APPLY NSF COMPLIANT GREASE TO ANY O-RING, SEALING JOINTS, AND/OR PIVOTAL POINTS.

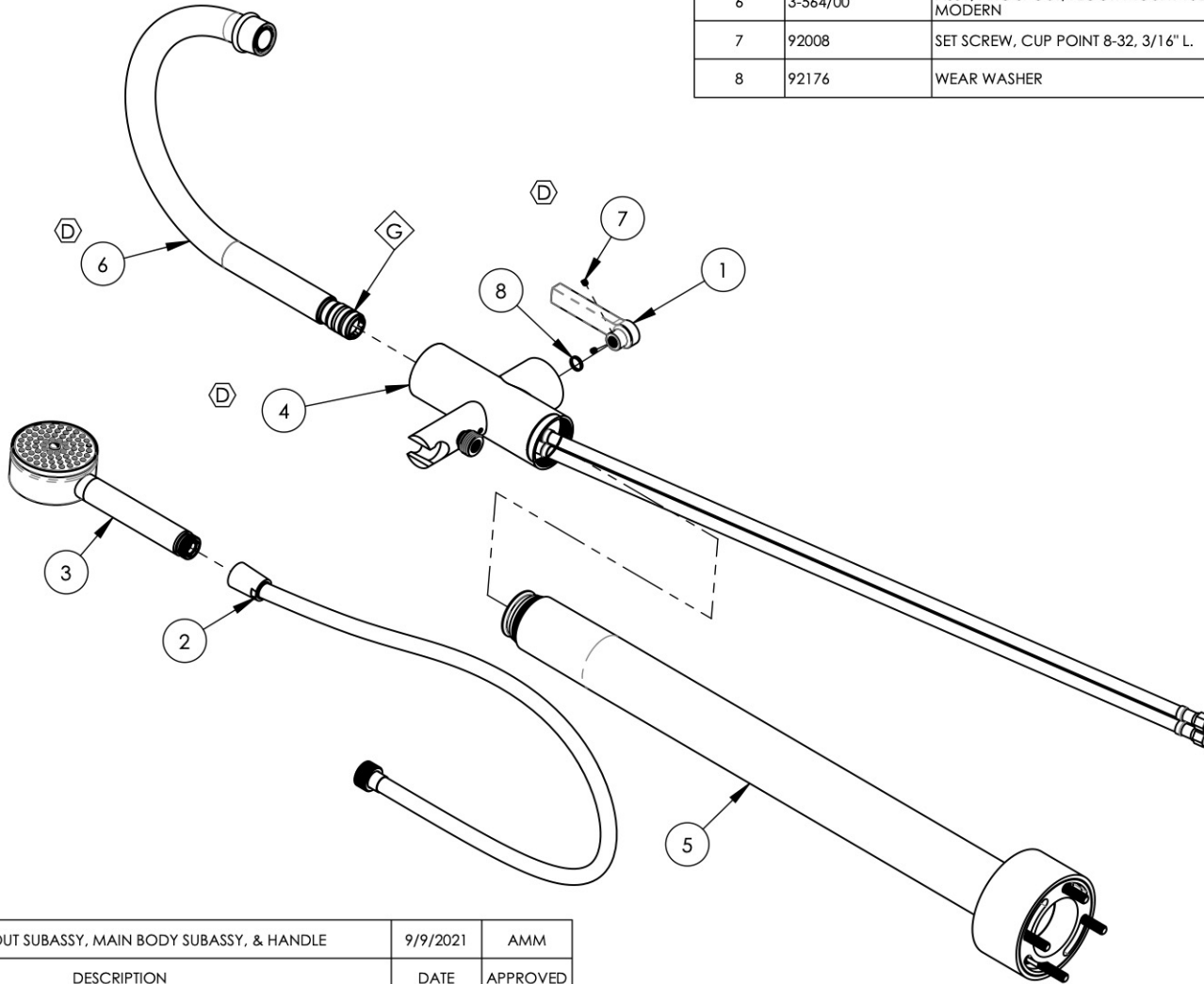
3. APPLY NSF COMPLIANT LOCTITE TO THREADED AREA.

4. APPLY NSF COMPLIANT REMOVABLE (BLUE) LOCTITE TO THREADED AREA.

5. SILVER SOLDER JOINTS SHALL BE FULLY WETTED VIA CAPILLARY ACTION AND COMPLETELY NON-POROUS.



ITEM NO.	PART NUMBER	DESCRIPTION	QTY.	
1	11036/00	HANDLE LEVER, CONTEMPORARY 16PT	1	
2	3-049/00	ASSY, HOSE KIT, HANDSHOWER	1	
3	3-066/00	HANDSHOWER, SINGLE FUNCTION STILO 70	1	
4	3-503/00	ASSY, MAIN BODY, TUB-FILLER	1	
5	3-504/00	ASSY, RISER & BASE, FLOOR MOUNT TUB FILLER	1	
6	3-564/00	ASSY, ARC SPOUT, FLOOR MOUNT TUB FILLER, HEX MODERN	1	
7	92008	SET SCREW, CUP POINT 8-32, 3/16" L.	2	
8	92176	WEAR WASHER	1	



C4, D3, D4	D	UPDATE SPOUT SUBASSY, MAIN BODY SUBASSY, & HANDLE	9/9/2021	AMM
ZONE	REV.	DESCRIPTION	DATE	APPROVED
REVISIONS				

1261 LOGAN AVENUE COSTA MESA, CALIFORNIA 92626 PHONE: 714.361.4800 FAX: 714.617.3120		<b>PHYLIRICH®</b> Defining Luxury Since 1959		<b>PROPRIETARY AND CONFIDENTIAL</b> THE INFORMATION CONTAINED IN THIS DRAWING IS THE SOLE PROPERTY OF PHYLIRICH. ANY REPRODUCTION IN PART OR AS A WHOLE WITHOUT THE WRITTEN PERMISSION OF PHYLIRICH IS PROHIBITED. <b>DO NOT SCALE DRAWING</b>	
---	--	---	--	--	--

FLOOR MOUNT TUB FILLER W/ HANDSHOWER, ARCH SPOUT, LEVER, HEX MODERN		SIZE <b>A</b>	ASM/PRT NO. 501-47/00	REV D
SCALE: 1:6		WEIGHT: lbs.		SHEET 1 OF 2