

NOTE(S):  
1. PART NUMBER, "/00" DENOTES PART SHALL HAVE FINISH.

2. APPLY NSF COMPLIANT GREASE TO ANY O-RING, SEALING JOINTS, AND/OR PIVOTAL POINTS.

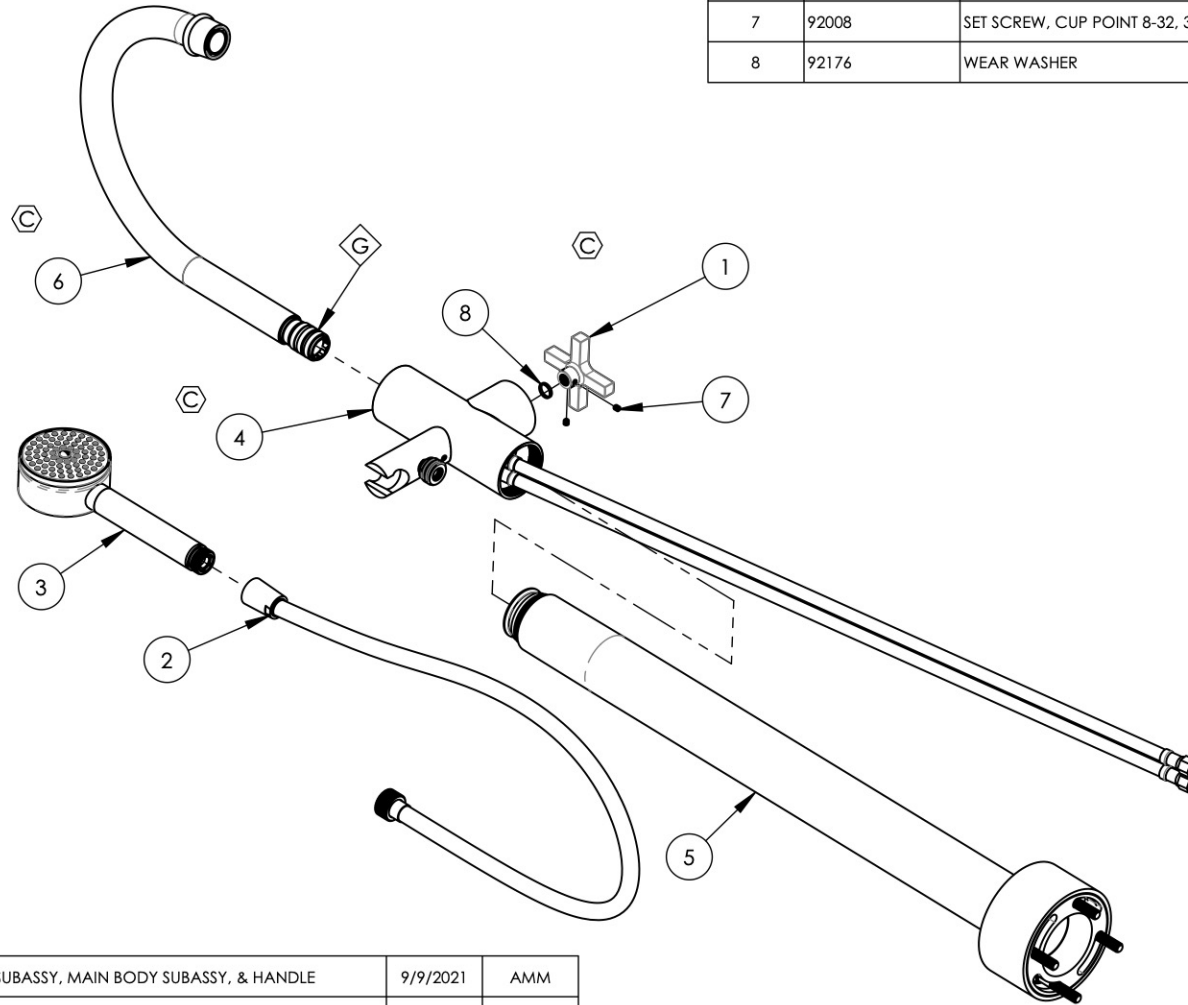
3. APPLY NSF COMPLIANT LOCTITE TO THREADED AREA.

4. APPLY NSF COMPLIANT REMOVABLE (BLUE) LOCTITE TO THREADED AREA.

5. SILVER SOLDER JOINTS SHALL BE FULLY WETTED VIA CAPILLARY ACTION AND COMPLETELY NON-POROUS.



ITEM NO.	PART NUMBER	DESCRIPTION	QTY.
1	10633/00	HANDLE CROSS, CONTEMPORARY 16PT	1
2	3-049/00	ASSY, HOSE KIT, HANDSHOWER	1
3	3-066/00	HANDSHOWER, SINGLE FUNCTION STILO 70	1
4	3-503/00	ASSY, MAIN BODY, TUB-FILLER	1
5	3-504/00	ASSY, RISER & BASE, FLOOR MOUNT TUB FILLER	1
6	3-564/00	ASSY, ARC SPOUT, FLOOR MOUNT TUB FILLER, HEX MODERN	1
7	92008	SET SCREW, CUP POINT 8-32, 3/16" L.	2
8	92176	WEAR WASHER	1



C4, D3, D4	C	UPDATE SPOUT SUBASSY, MAIN BODY SUBASSY, & HANDLE	9/9/2021	AMM
ZONE	REV.	DESCRIPTION	DATE	APPROVED

REVISIONS

**PROPRIETARY AND CONFIDENTIAL**  
THE INFORMATION CONTAINED IN THIS DRAWING IS THE SOLE PROPERTY OF PHYLRICH. ANY REPRODUCTION IN PART OR AS A WHOLE WITHOUT THE WRITTEN PERMISSION OF PHYLRICH IS PROHIBITED.  
**DO NOT SCALE DRAWING**

FLOOR MOUNT TUB FILLER W/  
HANDSHOWER, ARCH SPOUT, CROSS,  
HEX MODERN

SIZE <b>A</b>	ASM/PRT NO. 501-46/00	REV C
SCALE: 1:6	WEIGHT: lbs.	SHEET 1 OF 2

1261 LOGAN AVENUE  
COSTA MESA, CALIFORNIA 92626  
PHONE: 714.361.4800  
FAX: 714.617.3120

**PHYLRICH**<sup>®</sup>  
Defining Luxury Since 1959

NOTE(S):  
 1. PART NUMBER, "/00" DENOTES PART SHALL HAVE FINISH.

2. APPLY NSF COMPLIANT GREASE TO ANY O-RING, SEALING JOINTS, AND/OR PIVOTAL POINTS.

3. APPLY NSF COMPLIANT LOCTITE TO THREADED AREA.

4. APPLY NSF COMPLIANT REMOVABLE (BLUE) LOCTITE TO THREADED AREA.

5. SILVER SOLDER JOINTS SHALL BE FULLY WETTED VIA CAPILLARY ACTION AND COMPLETELY NON-POROUS.

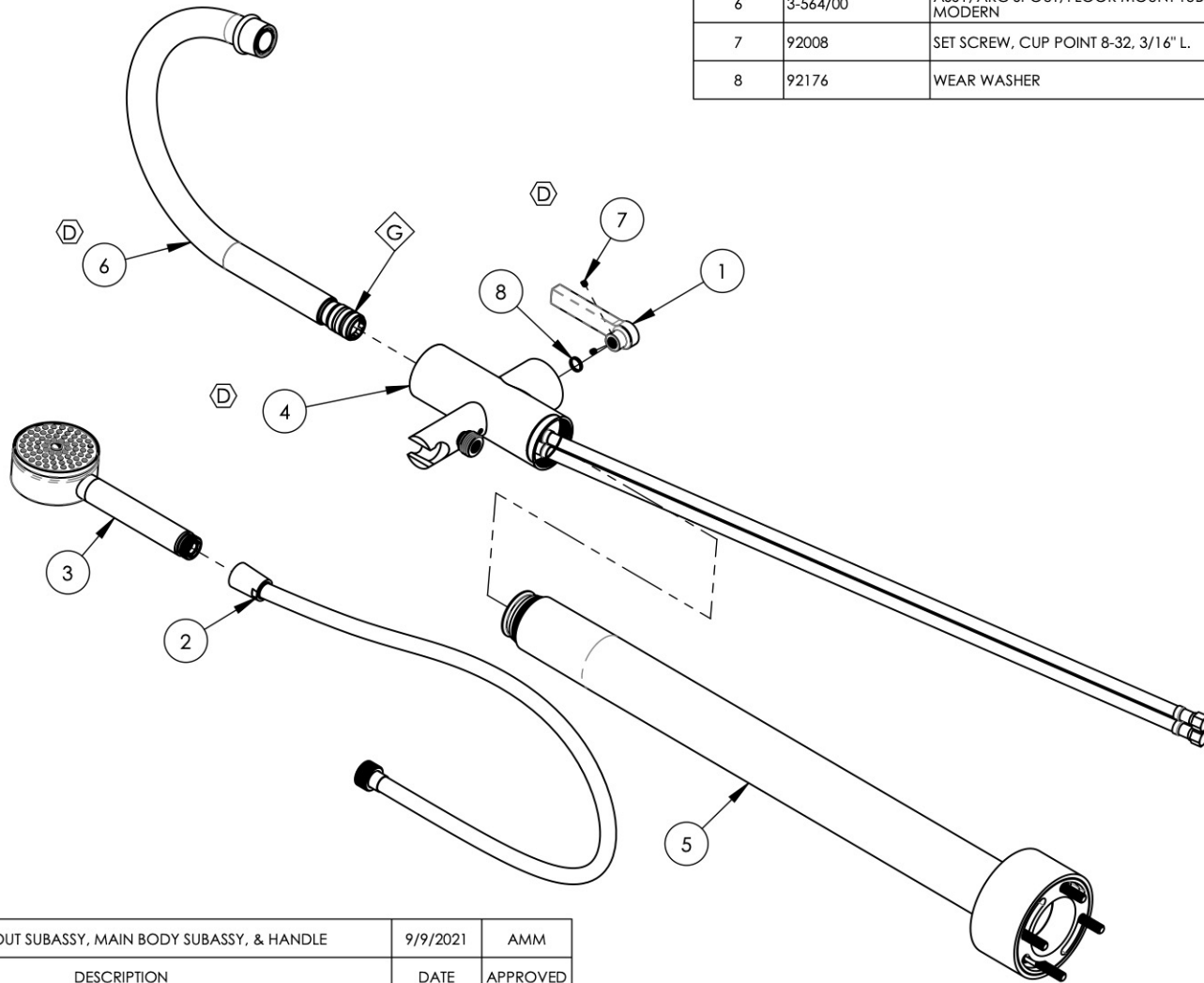
G

L

B

S

ITEM NO.	PART NUMBER	DESCRIPTION	QTY.
1	11036/00	HANDLE LEVER, CONTEMPORARY 16PT	1
2	3-049/00	ASSY, HOSE KIT, HANDSHOWER	1
3	3-066/00	HANDSHOWER, SINGLE FUNCTION STILO 70	1
4	3-503/00	ASSY, MAIN BODY, TUB-FILLER	1
5	3-504/00	ASSY, RISER & BASE, FLOOR MOUNT TUB FILLER	1
6	3-564/00	ASSY, ARC SPOUT, FLOOR MOUNT TUB FILLER, HEX MODERN	1
7	92008	SET SCREW, CUP POINT 8-32, 3/16" L.	2
8	92176	WEAR WASHER	1



C4, D3, D4	D	UPDATE SPOUT SUBASSY, MAIN BODY SUBASSY, & HANDLE	9/9/2021	AMM
ZONE	REV.	DESCRIPTION	DATE	APPROVED

REVISIONS

**PROPRIETARY AND CONFIDENTIAL**  
 THE INFORMATION CONTAINED IN THIS DRAWING IS THE SOLE PROPERTY OF PHYLRICH. ANY REPRODUCTION IN PART OR AS A WHOLE WITHOUT THE WRITTEN PERMISSION OF PHYLRICH IS PROHIBITED.

**DO NOT SCALE DRAWING**

FLOOR MOUNT TUB FILLER W/  
 HANDSHOWER, ARCH SPOUT, LEVER, HEX MODERN

SIZE <b>A</b>	ASM/PRT NO. 501-47/00	REV D
SCALE: 1:6	WEIGHT: lbs.	SHEET 1 OF 2

1261 LOGAN AVENUE  
 COSTA MESA, CALIFORNIA 92626  
 PHONE: 714.361.4800  
 FAX: 714.617.3120

**PHYLRICH®**  
 Defining Luxury Since 1959