

AXOR One

Basin mixer for concealed installation wall-mounted Select with spout 220 mm

Surfaces: **Brushed Nickel** Article Number: **48112820**



product features

- consists of: basin mixer for concealed installation wall-mounted, waste set
- projection: 220 mm
- spray type: normal spray
- maximum flow rate at 3 bar: 5 l/min
- Select cartridge with temperature control
- suitable for continuous flow water heaters
- non-closing waste set
- connection type: basic set
- connection dimension: DN15

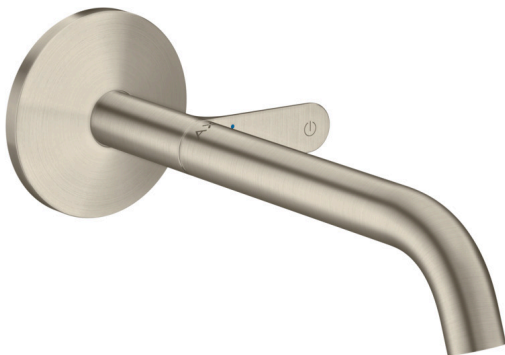
Technology



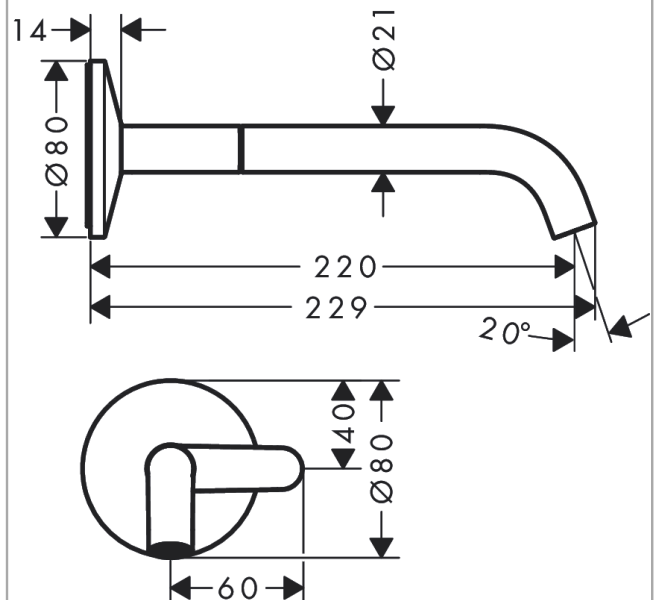
Design awards



Product image



Scale drawing



AXOR One

Basin mixer for concealed installation wall-mounted Select with spout 220 mm

Surfaces: **Brushed Nickel** Article Number: **48112820**



Flowchart

