

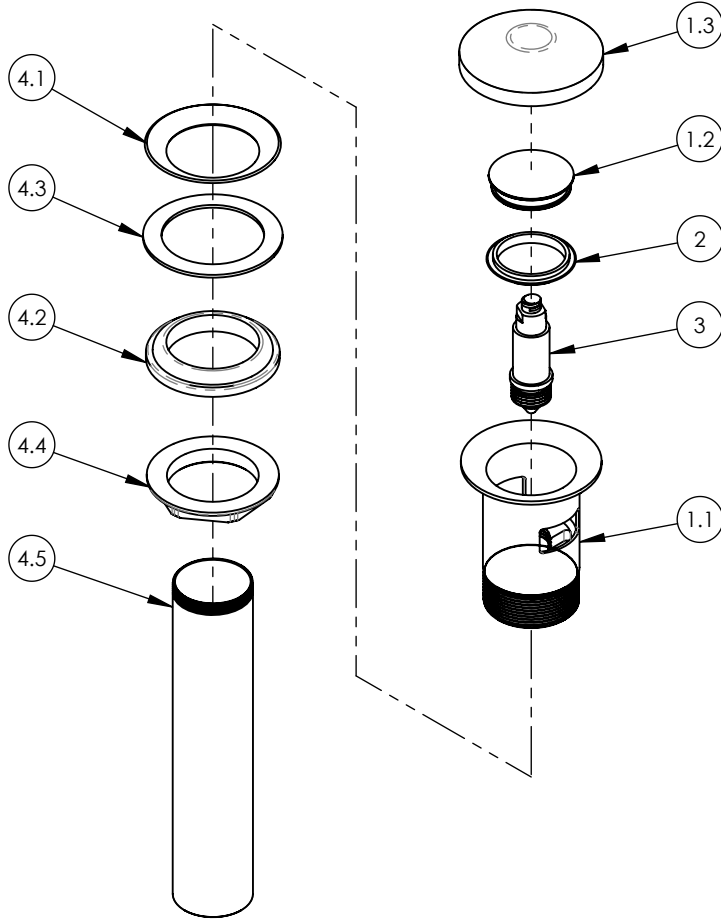
NOTE(S):  
1. PART NUMBER, "/00" DENOTES PART SHALL HAVE FINISH.

2. APPLY NSF COMPLIANT GREASE TO ANY O-RING, SEALING JOINTS, AND/OR PIVOTAL POINTS.

3. APPLY NSF COMPLIANT LOCTITE TO THREADED AREA.

4. APPLY NSF COMPLIANT REMOVABLE (BLUE) LOCTITE TO THREADED AREA.

5. SILVER SOLDER JOINTS SHALL BE FULLY WETTED VIA CAPILLARY ACTION AND COMPLETELY NON-POROUS.



ITEM NO.	PART NUMBER	DESCRIPTION	QTY.
1	3-648/00	DRAIN BUTTON, RIM & PLASTIC COVER	1
1.1	11944/00	DRAIN BODY W/ OVERFLOW, PUSH TO CLOSE(NEW)	1
1.2	11945/00	CENTER CAP, SMALL, DRAIN,	1
1.3	92349	PLASTIC PROTECTIVE CAP, DRAIN	1
2	90591	RUBBER GASKET	1
3	11942	PUSH/PULL BRAS INSERT	1
4	3-647	DRAIN MOUNTING KIT	1
4.1	90575	RIM GASKET, DRAIN	1
4.2	90576	CONICAL GASKET , RUBBER DRAIN	1
4.3	90577	NYLON WASHER, DRAIN	1
4.4	92350	MOUNTING NUT, DRAIN	1
4.5	11602	TAIL TUBE, DRAIN	1

ZONE	REV.	DESCRIPTION	DATE	APPROVED
REVISIONS				

1261 LOGAN AVENUE  
COSTA MESA, CALIFORNIA 92626  
PHONE: 714.361.4800  
FAX: 714.617.3120

**PHYLIRICH**  
Defining Luxury Since 1959

**PROPRIETARY AND CONFIDENTIAL**

THE INFORMATION CONTAINED IN THIS DRAWING IS THE SOLE PROPERTY OF PHYLIRICH. ANY REPRODUCTION IN PART OR AS A WHOLE WITHOUT THE WRITTEN PERMISSION OF PHYLIRICH IS PROHIBITED.

-	-	INTERPRET GEOMETRIC DIMENSIONING & TOLERANCING IN ACCORDANCE WITH ASME Y14.5-2009 & ASME Y14.41-2003 STANDARDS. UNLESS OTHERWISE SPECIFIED, DIMENSIONS ARE IN INCHES. TOLERANCES ARE:		
-	-			
-	-			
NEXT ASSY		USED ON	FRACTIONS ±1/16"	
APPLICATION			DECIMALS X.X: ±.1 X.XX: ±.01 X.XXX: ±.005	ANGULAR ±2°
MATERIAL			NAME	DATE
FINISH			DRAWN RAH	12/27/2019
DO NOT SCALE DRAWING			CHECKED	

**BRASS PUSH TYPE DRAIN, W/ OVERFLOW & SMALL PLUG**

SIZE <b>A</b>	ASM/PRT NO. <b>3-545/00</b>	REV -
SCALE: 1:3	WEIGHT: lbs.	SHEET 1 OF 1