

# artos<sup>®</sup>

## PS119

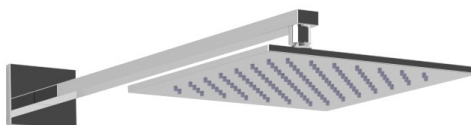
## INSTALLATION GUIDE

premier series shower set

BRUSHED NICKEL(PS119BN)



CHROME(PS119CH)

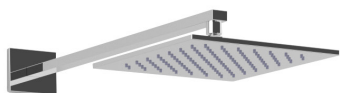


# artos<sup>®</sup>

## PS119

premier series shower set

## OPERATING SPECIFICATIONS



### FEATURES

Solid Brass

3-Outlets

### INCLUDES

F903B-59TK

F703-6

F907-50

FSC1000CH



### OPERATING PRESSURE

Minimum: 15 psi

Maximum: 75 psi

Above 90psi it may be necessary to install a pressure reducer

### OPERATING TEMPERATURE

Maximum: 176°

### FLOW CAPACITY

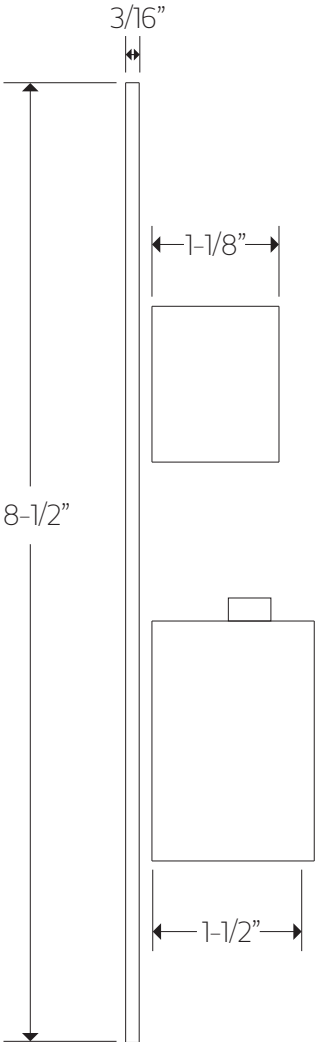
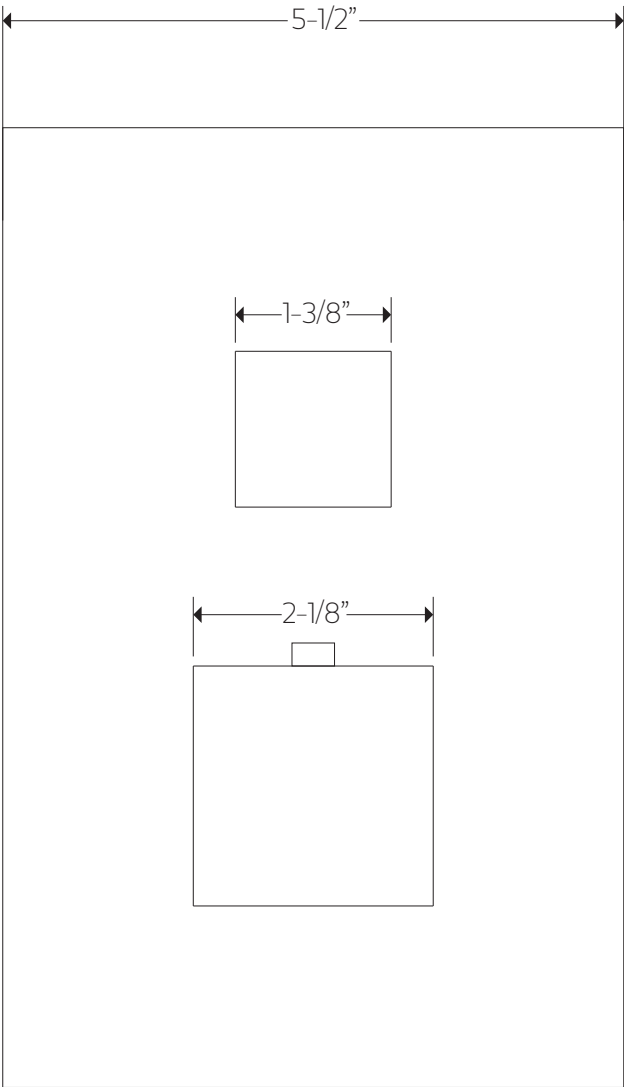
Hand Shower: 1.8 USGPM

Shower Head: 1.8 USGPM

Body Jet: 1.0 USGPM

### APPROVAL





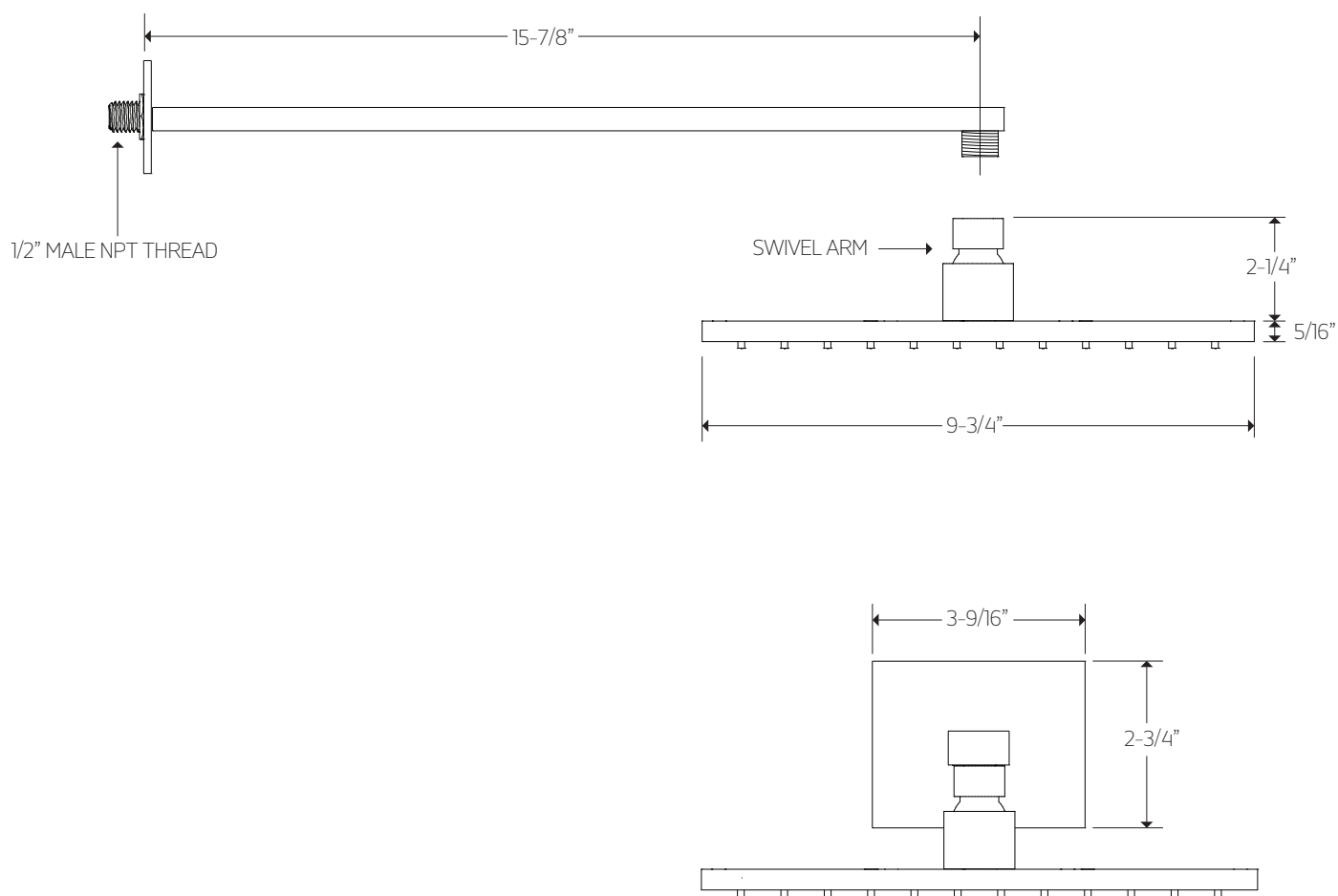
# artos<sup>®</sup>

## PS119

## PRODUCT DIMENSIONS

premier series shower set

for F907-50



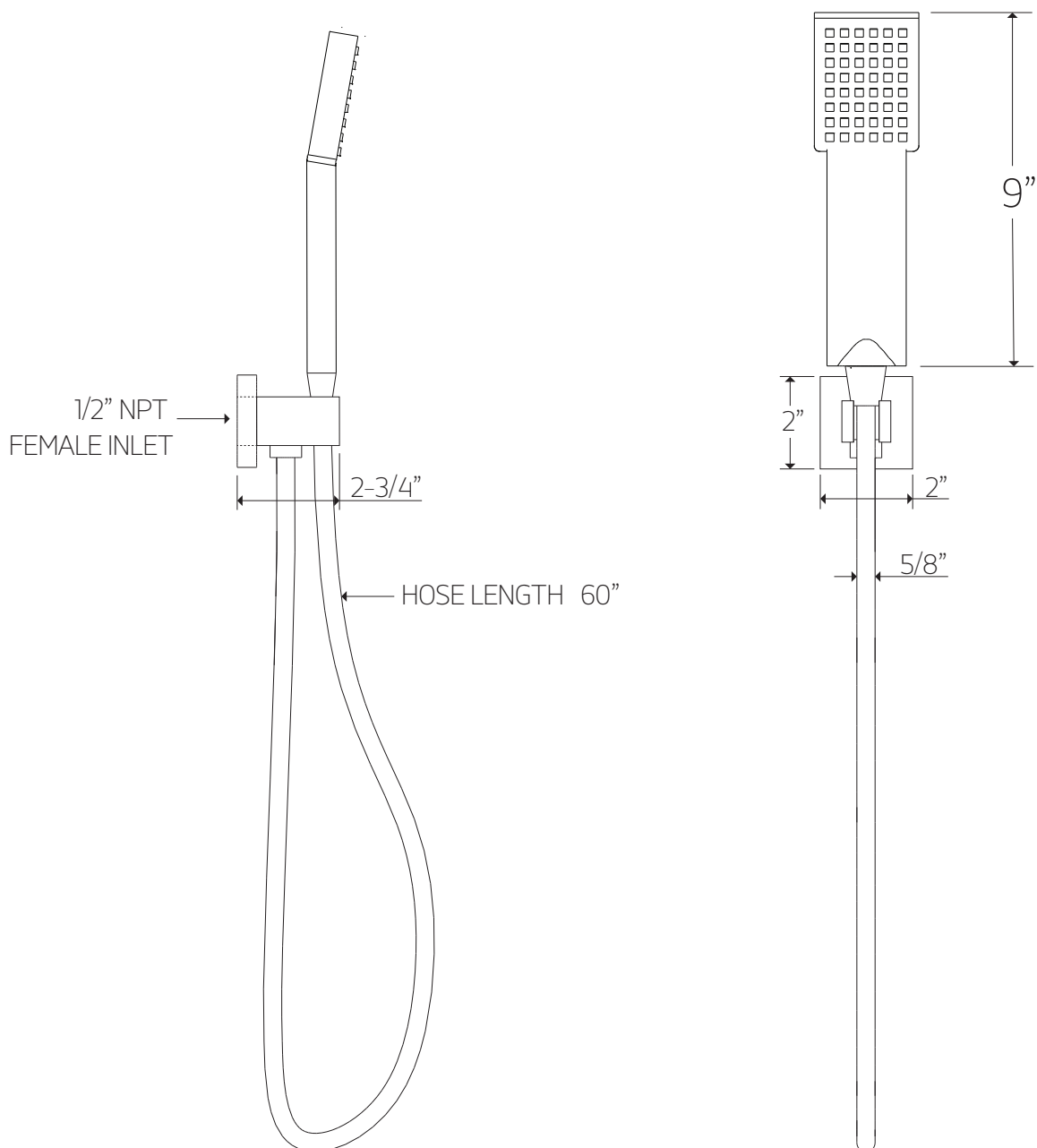
# artos<sup>®</sup>

## PS119

premier series shower set

## PRODUCT DIMENSIONS

for F703-6

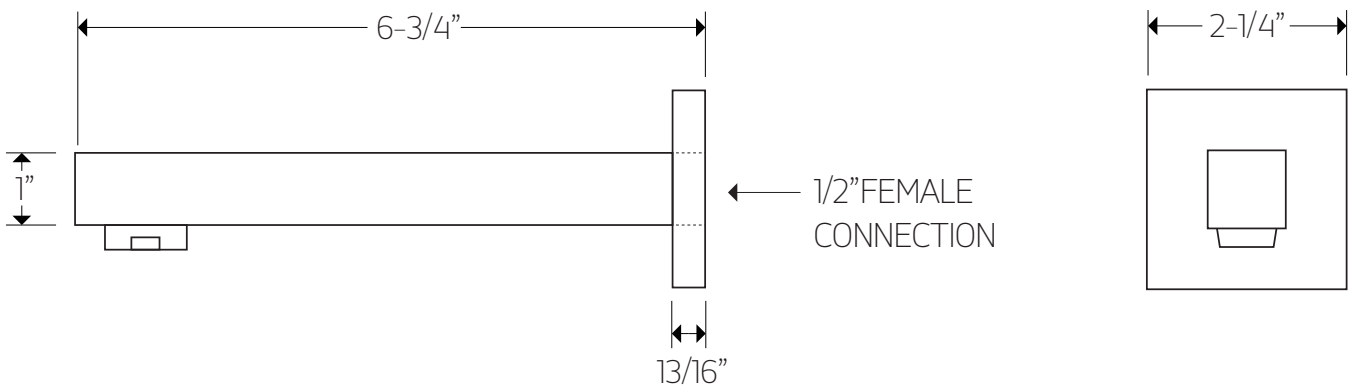


PS119

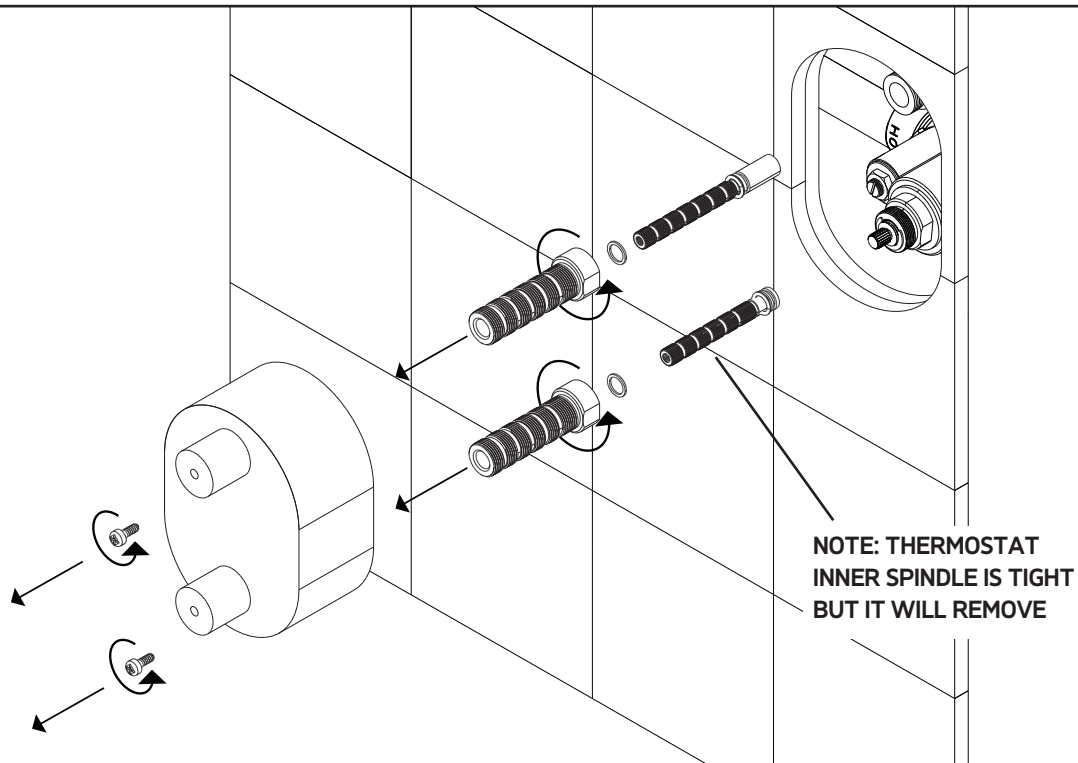
PRODUCT DIMENSIONS

premier series shower set

for FSC1000

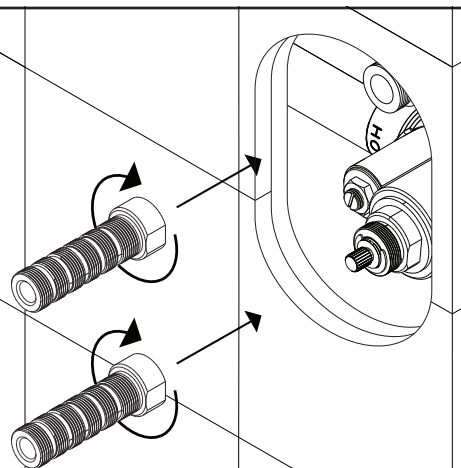


### STEP 1

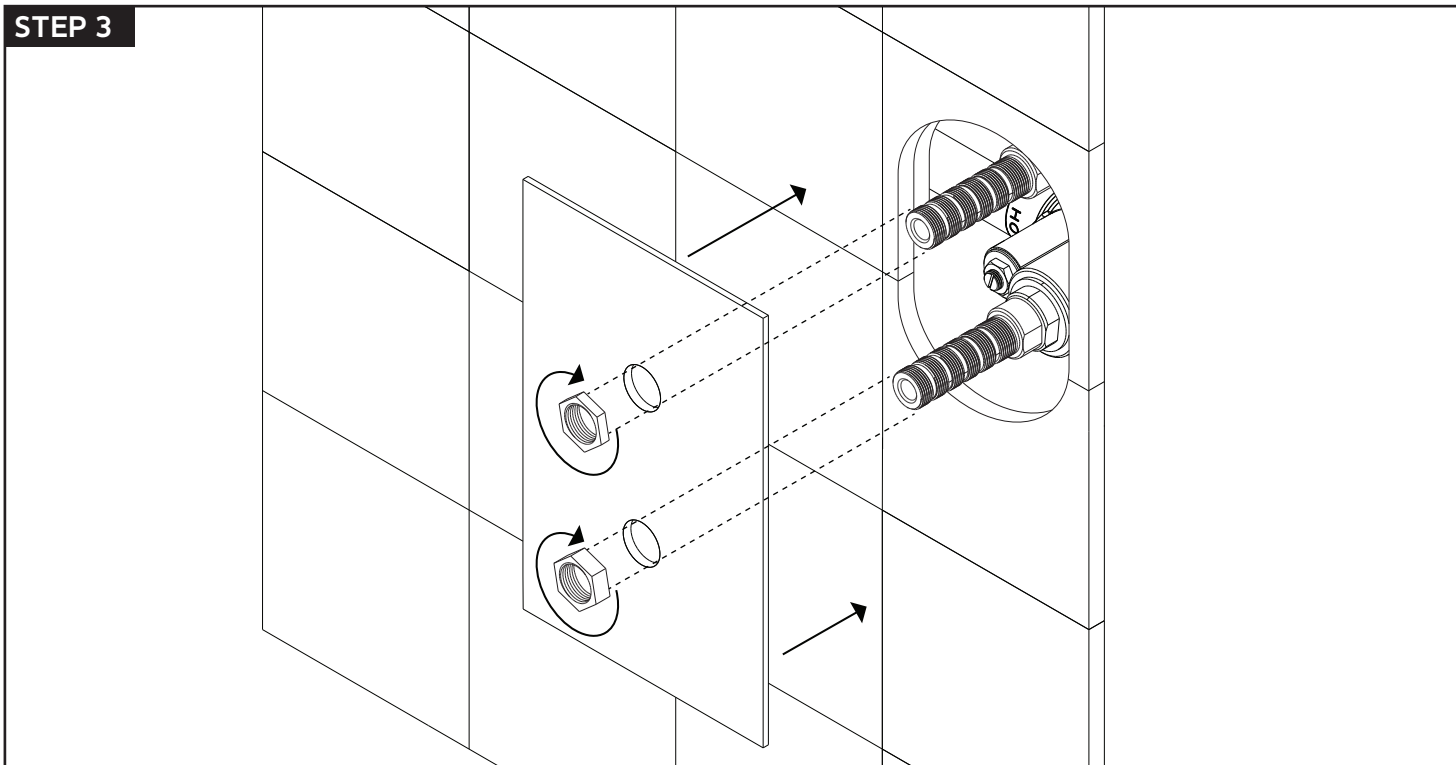


### STEP 2

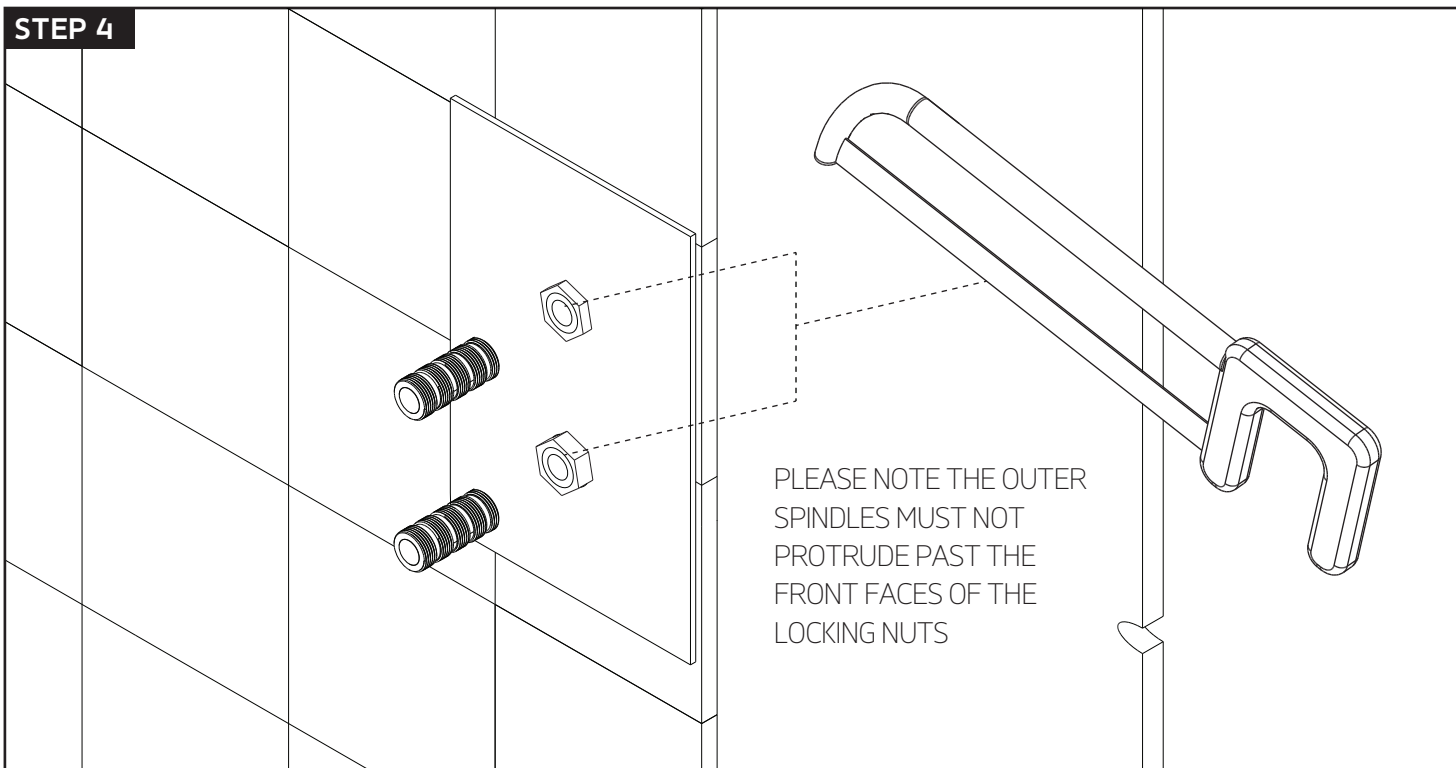
REFIT OUTER SPINDLES ONLY



### STEP 3



### STEP 4

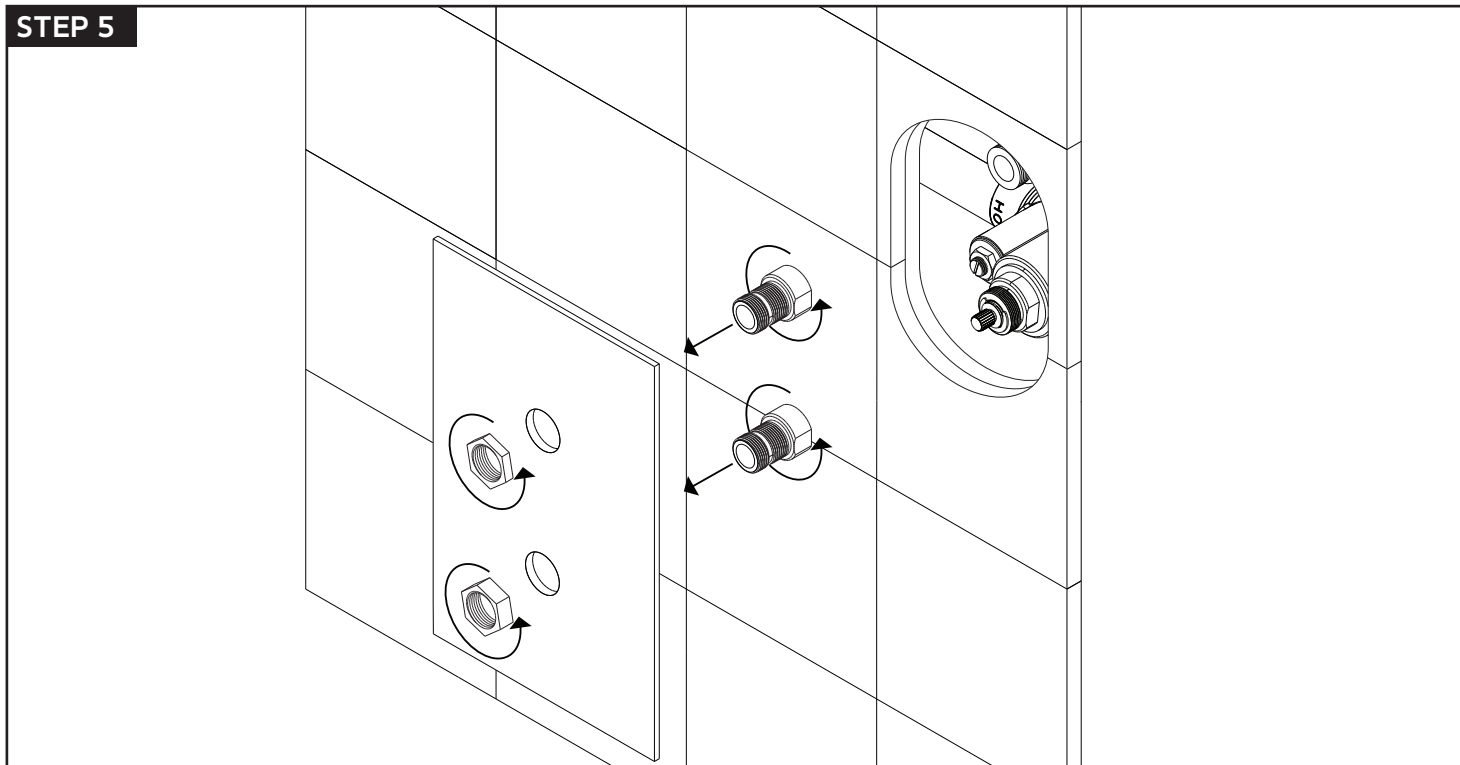




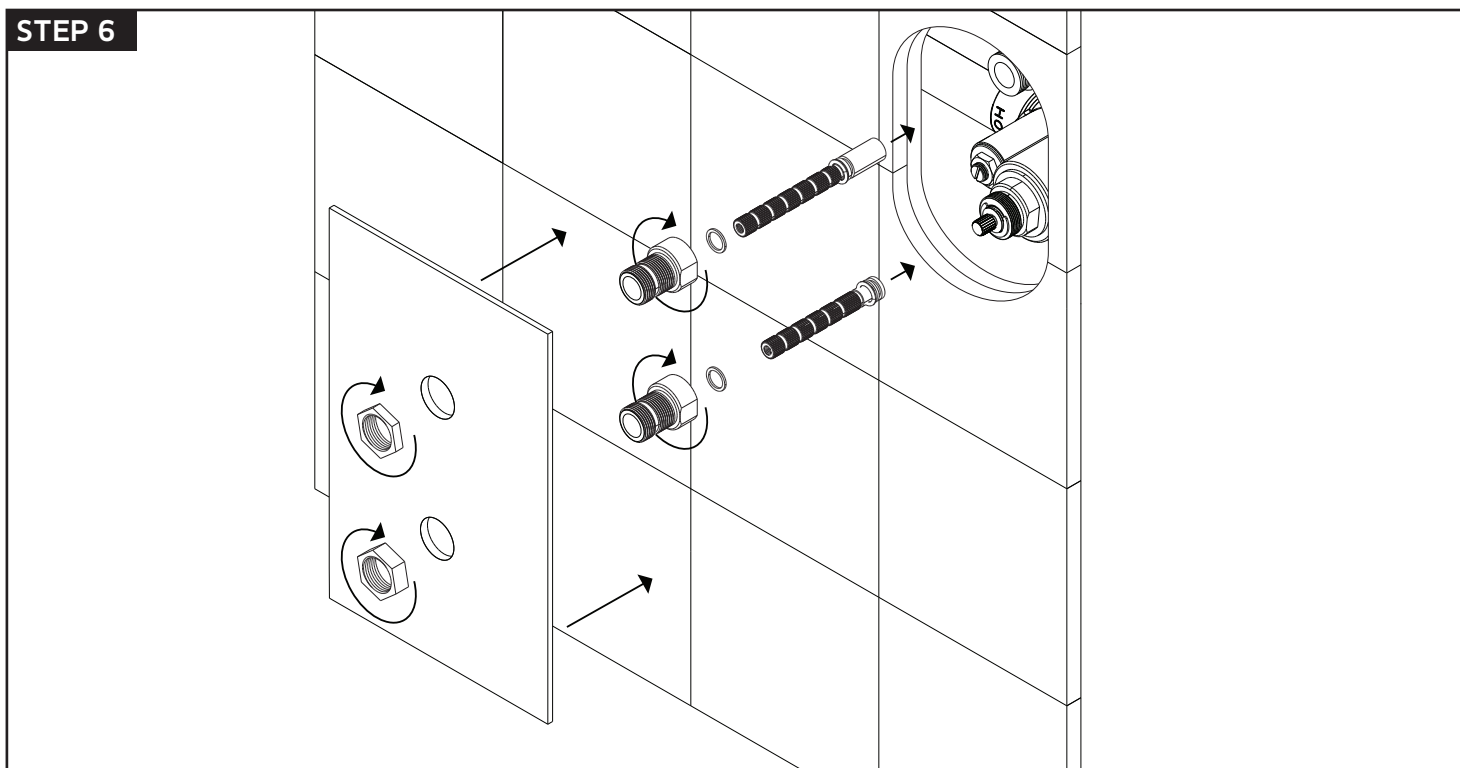
## INSTALLATION STEPS

for F903B-59TK

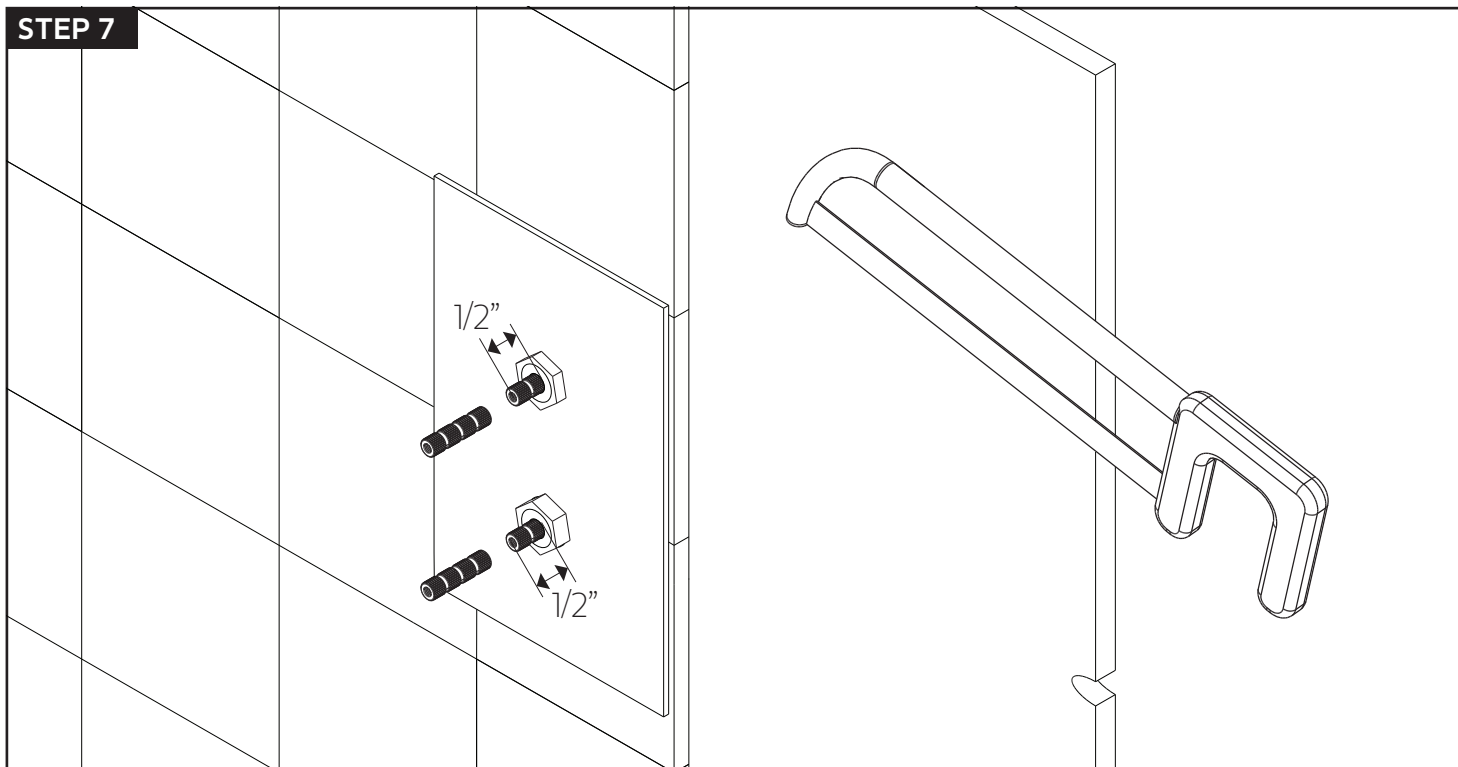
### STEP 5



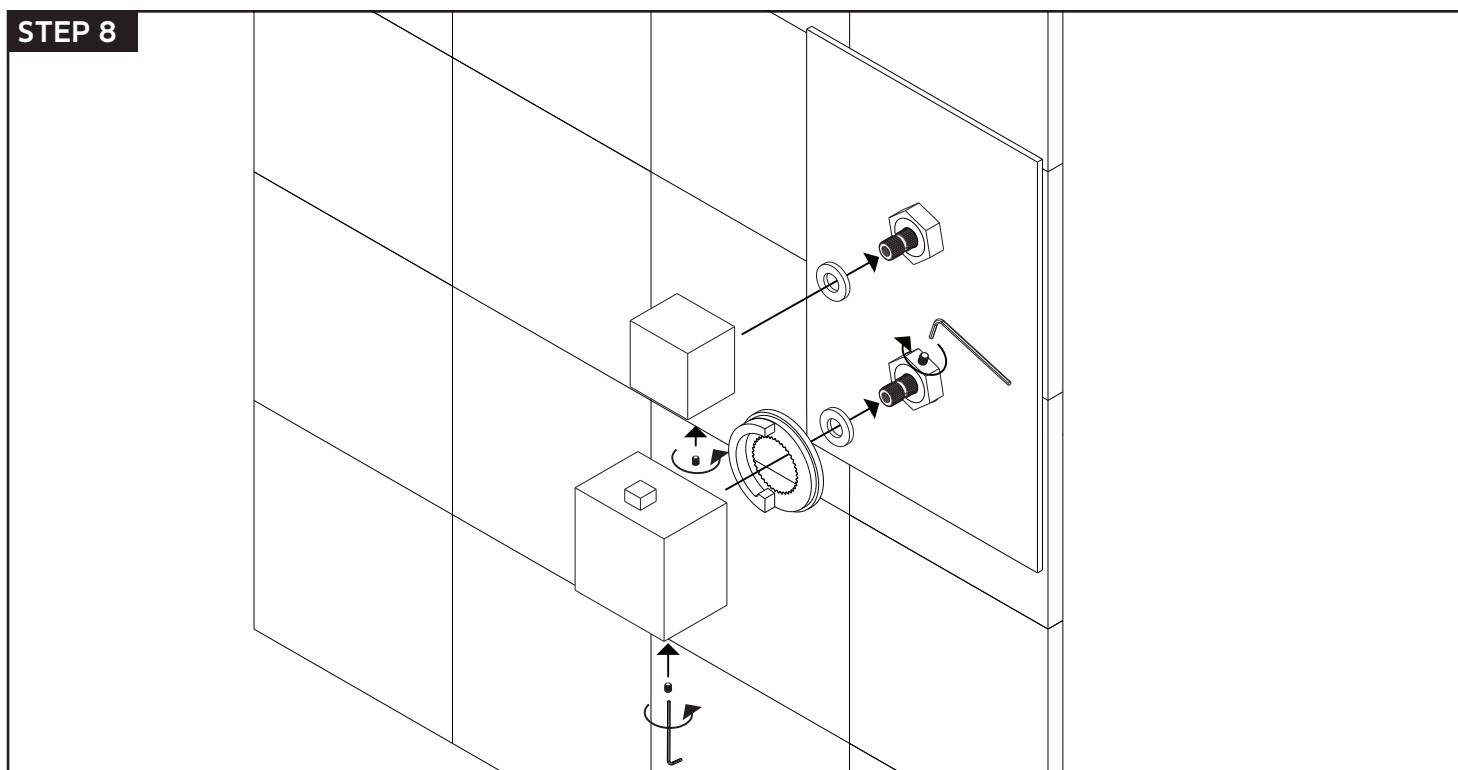
### STEP 6



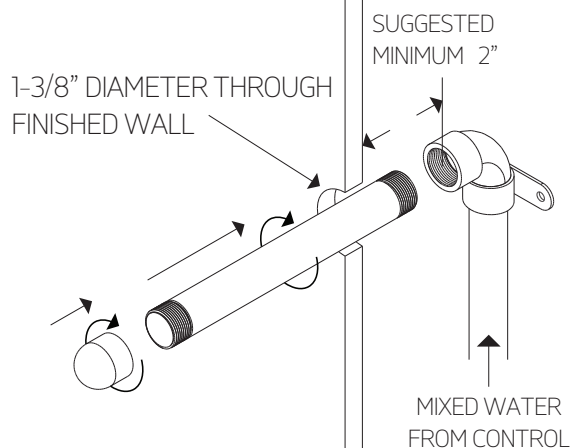
### STEP 7



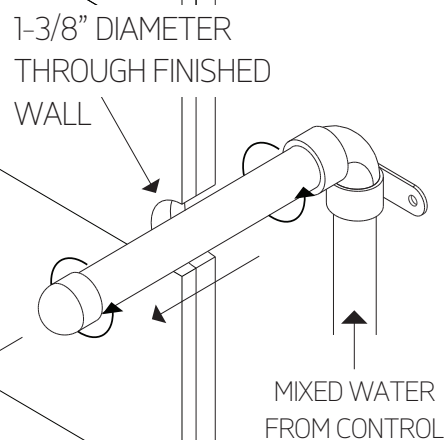
### STEP 8



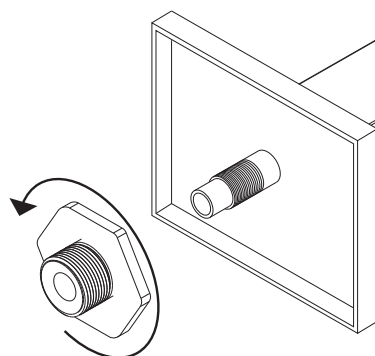
### STEP 1



### STEP 2



### STEP 3

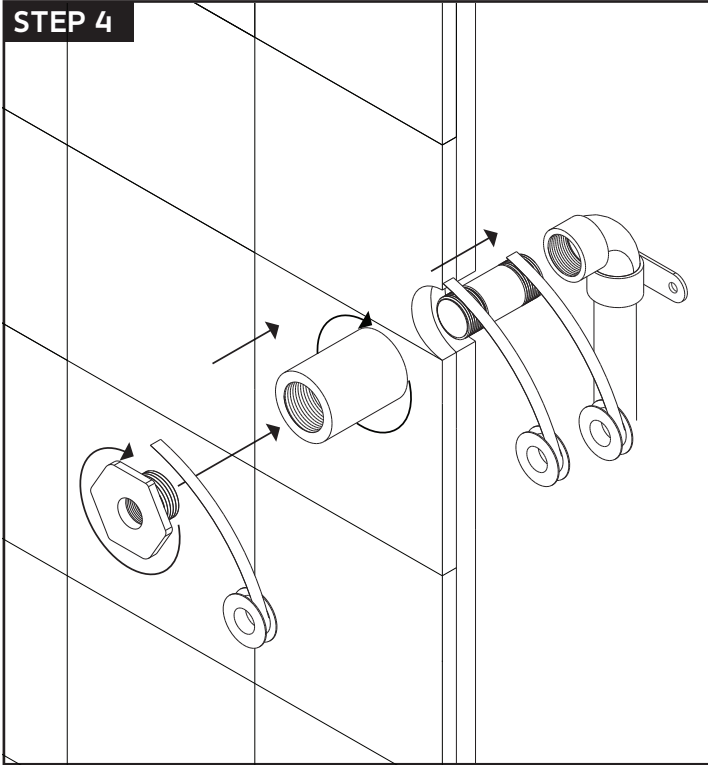


# artos<sup>®</sup>

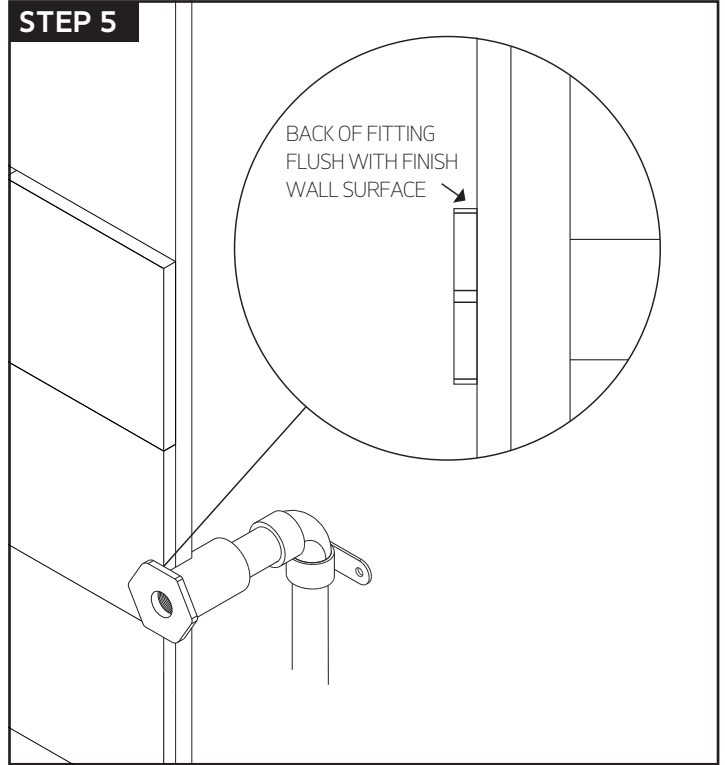
## PS119

premier series shower set

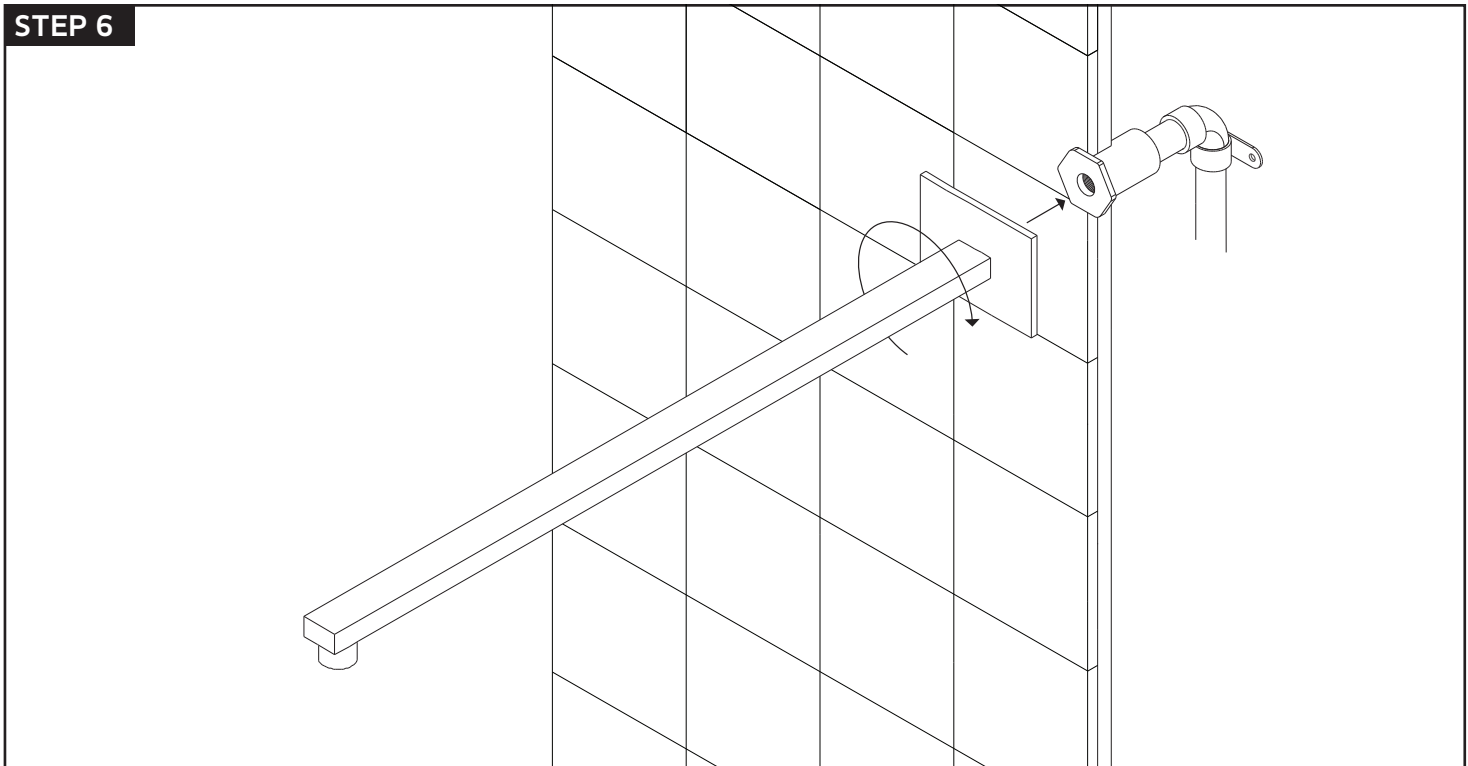
### STEP 4



### STEP 5



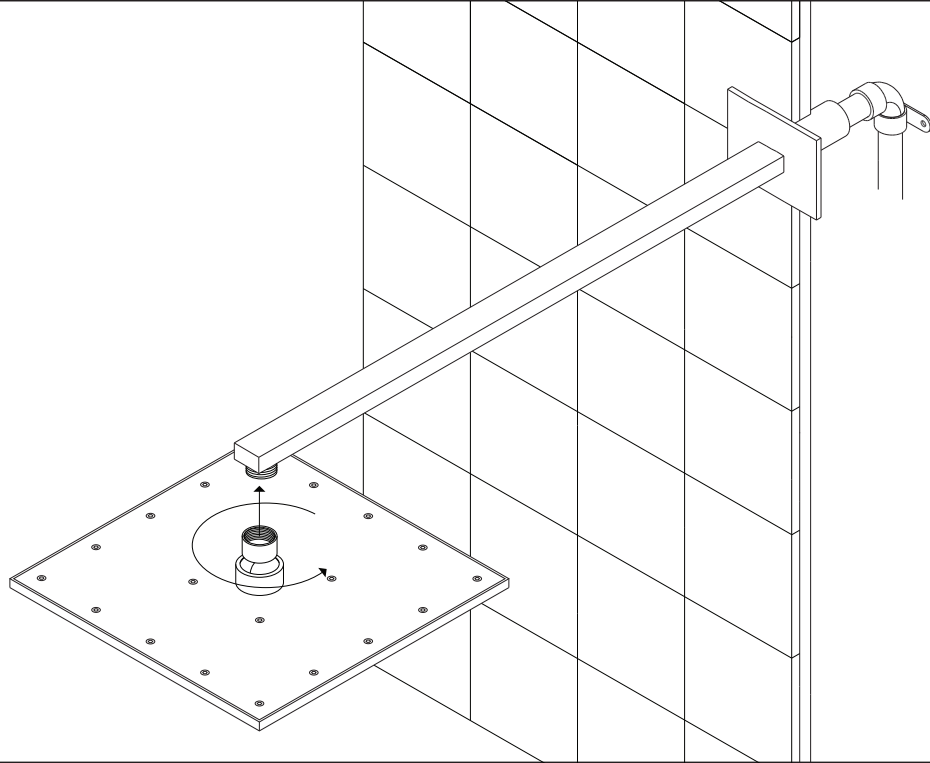
### STEP 6



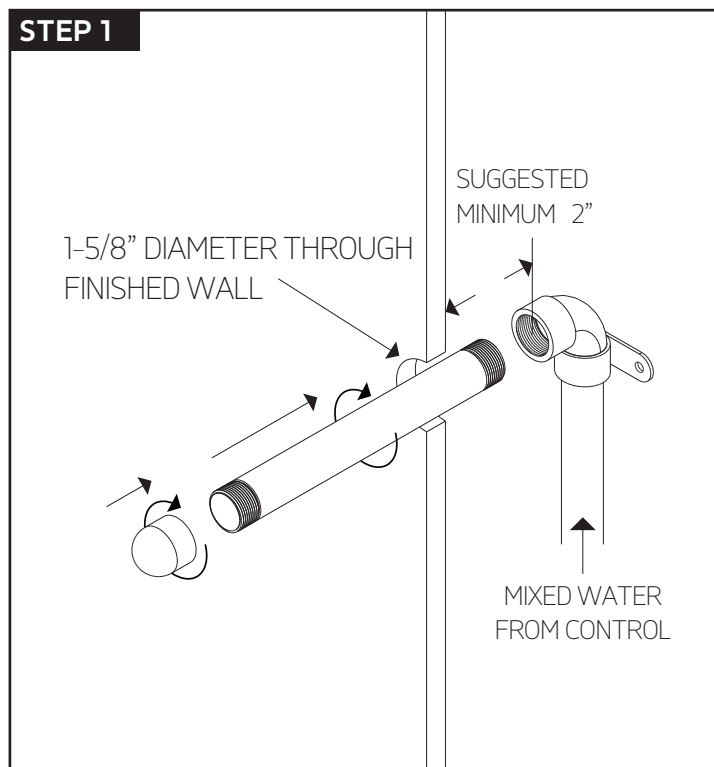
## INSTALLATION STEPS

for F907-50

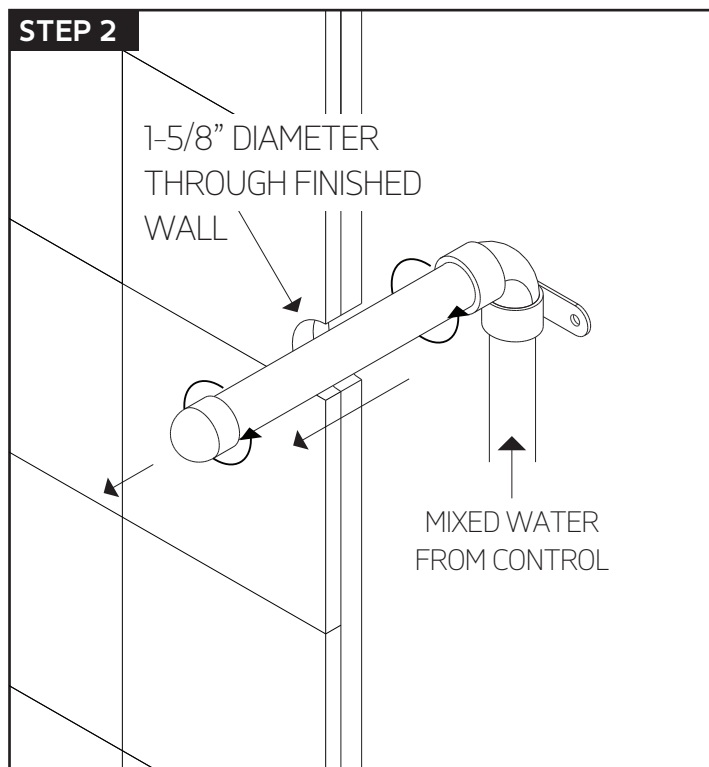
### STEP 7



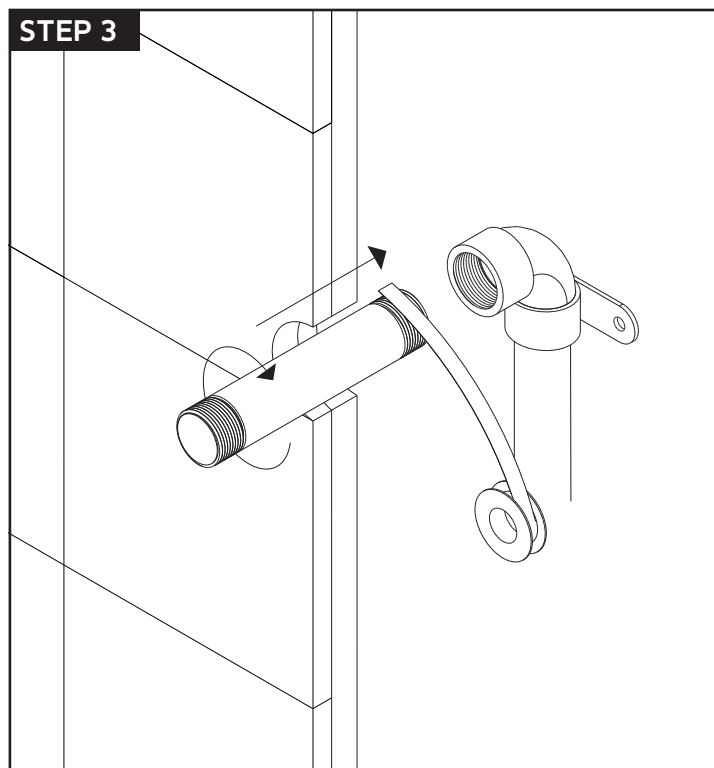
### STEP 1



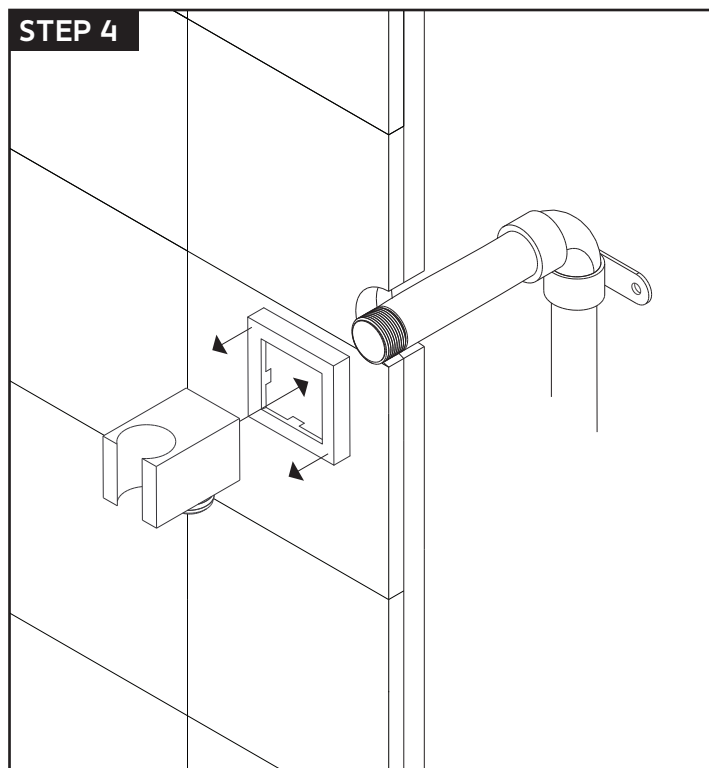
### STEP 2



### STEP 3



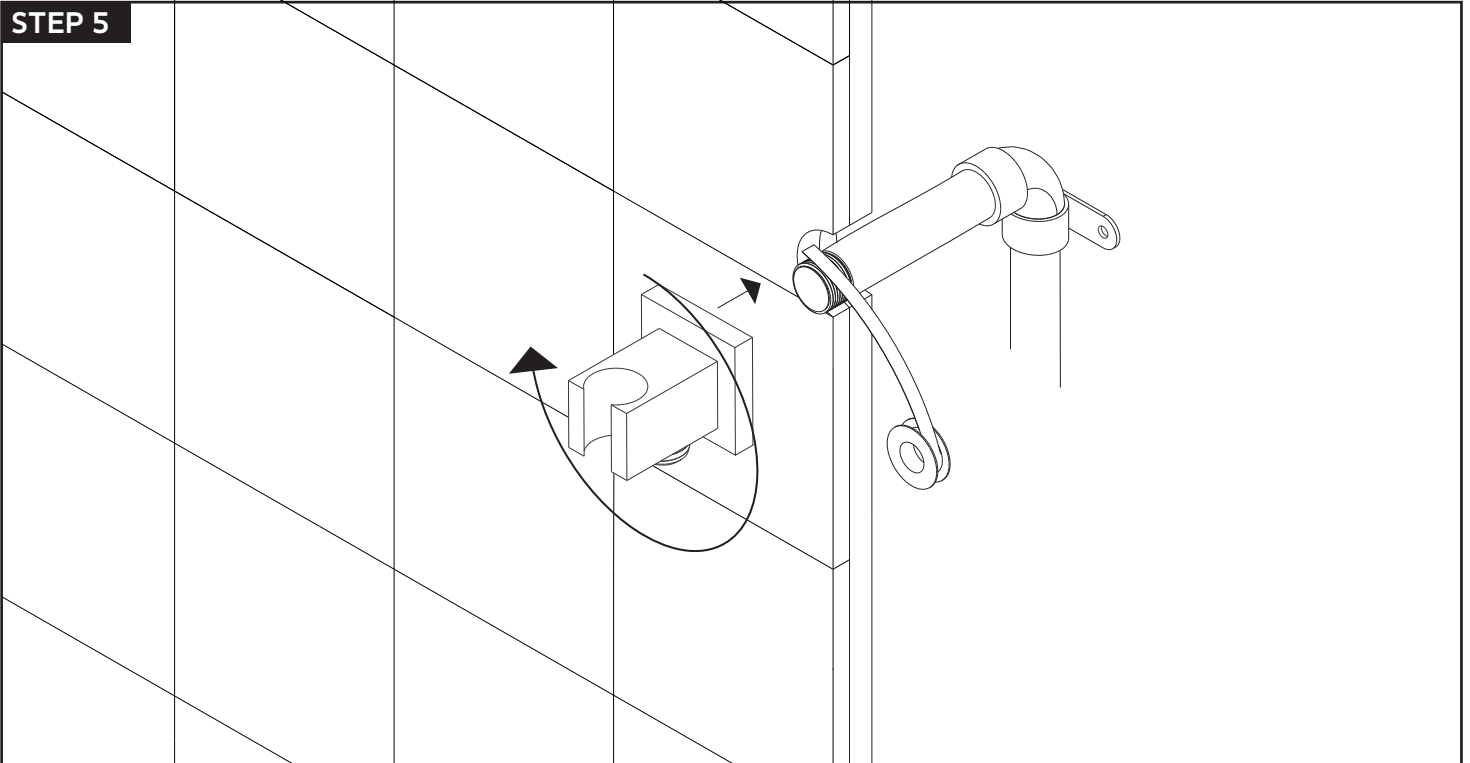
### STEP 4



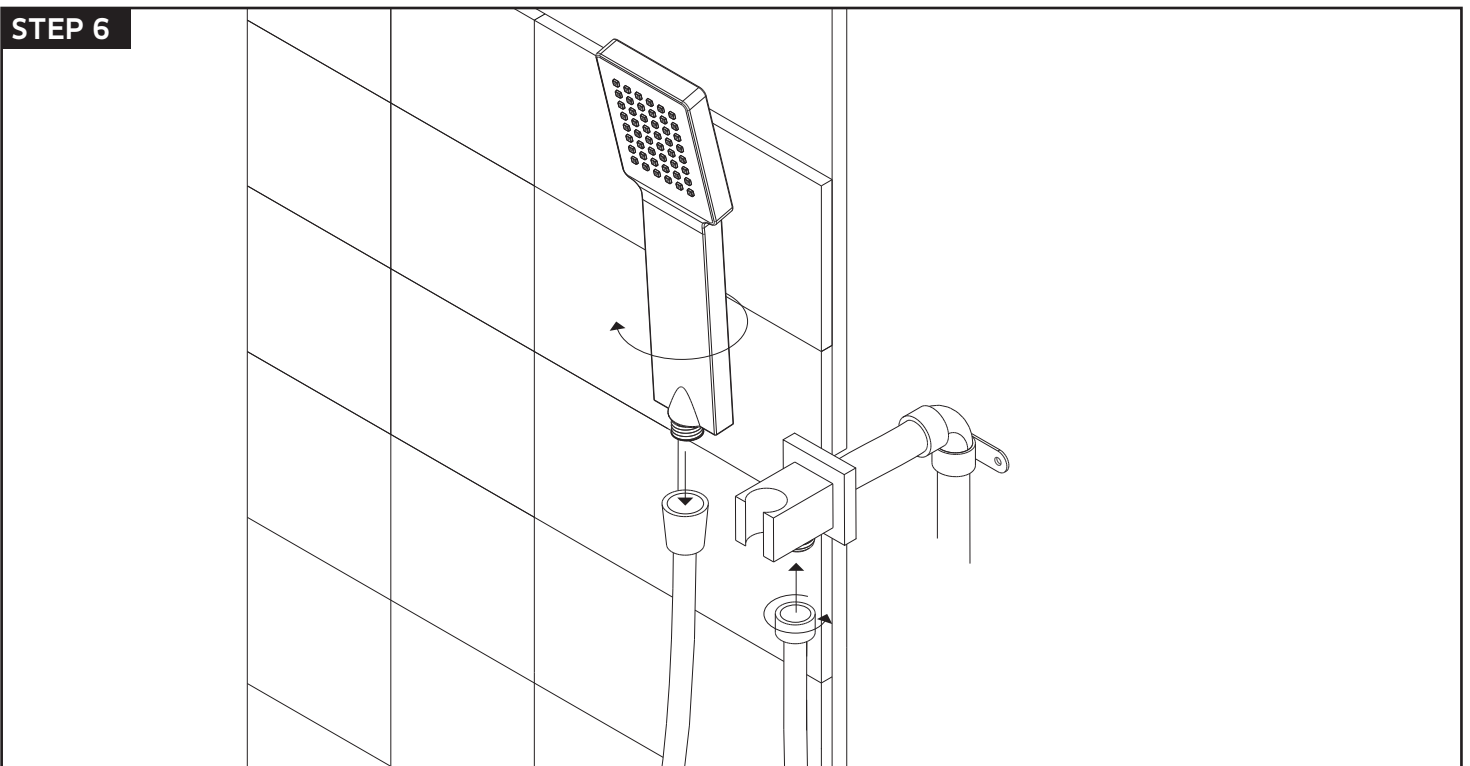
## INSTALLATION STEPS

for F703-6

### STEP 5



### STEP 6



### STEP 1

1-5/8" DIAMETER THROUGH FINISHED WALL

SUGGESTED MINIMUM 2"

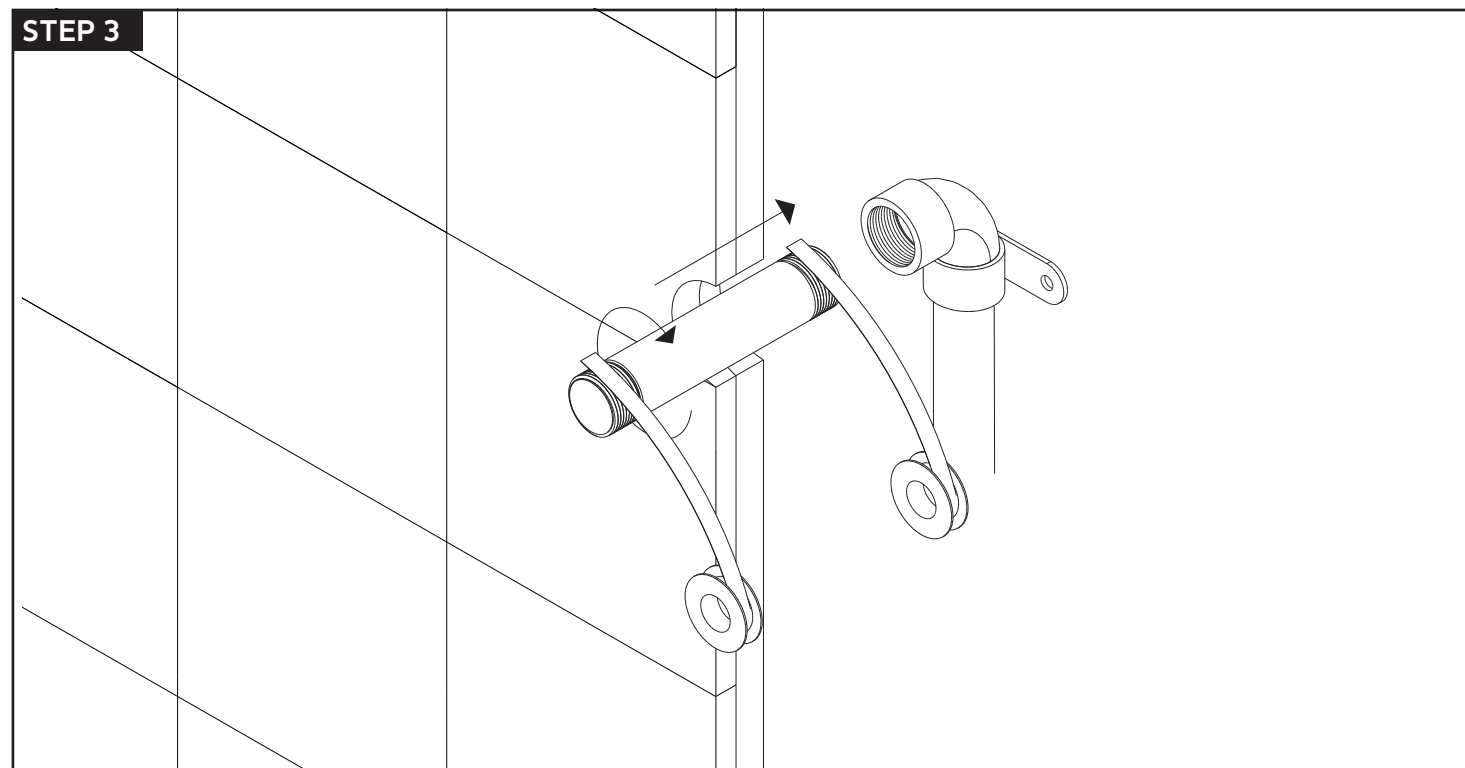
MIXED WATER FROM CONTROL

### STEP 2

1-5/8" DIAMETER THROUGH FINISHED WALL

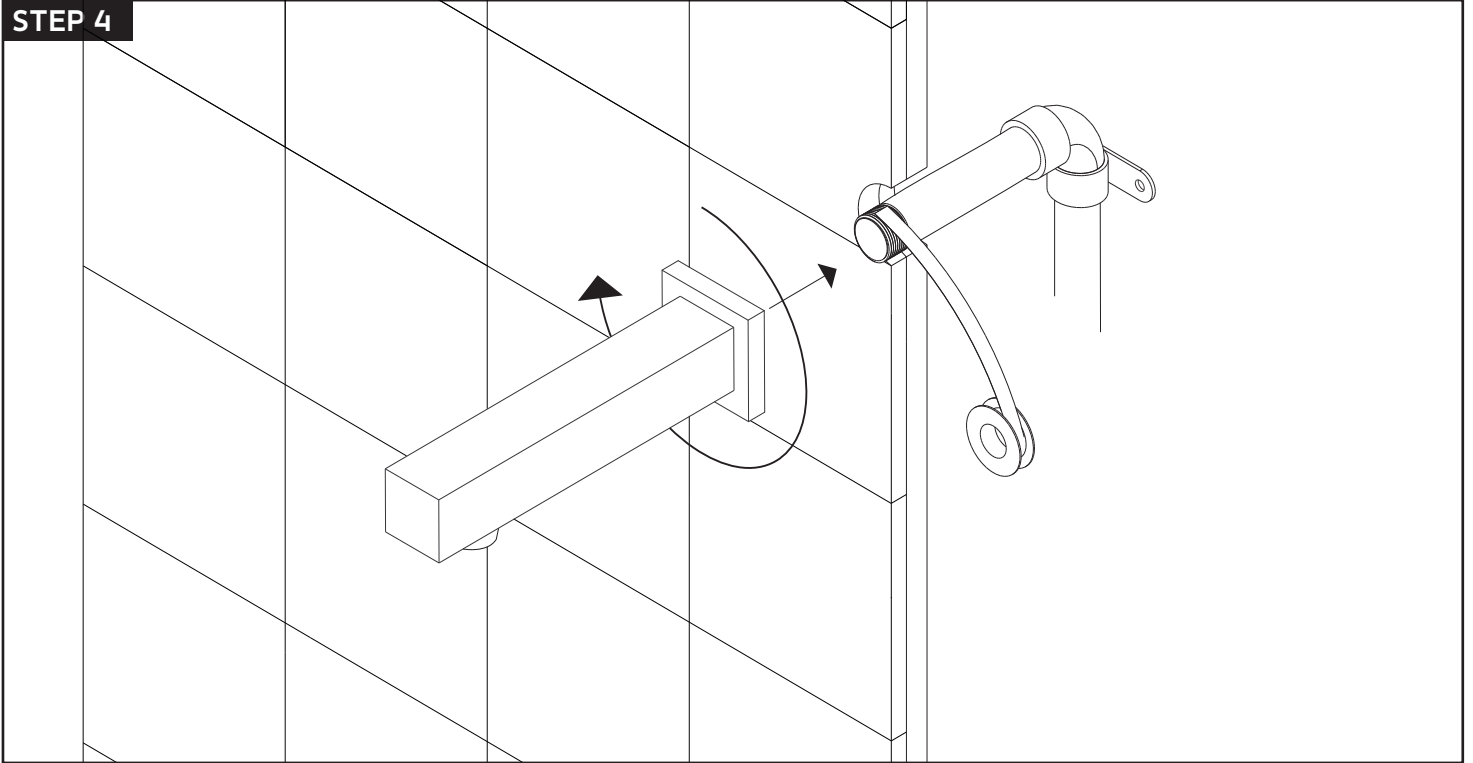
MIXED WATER FROM CONTROL

### STEP 3

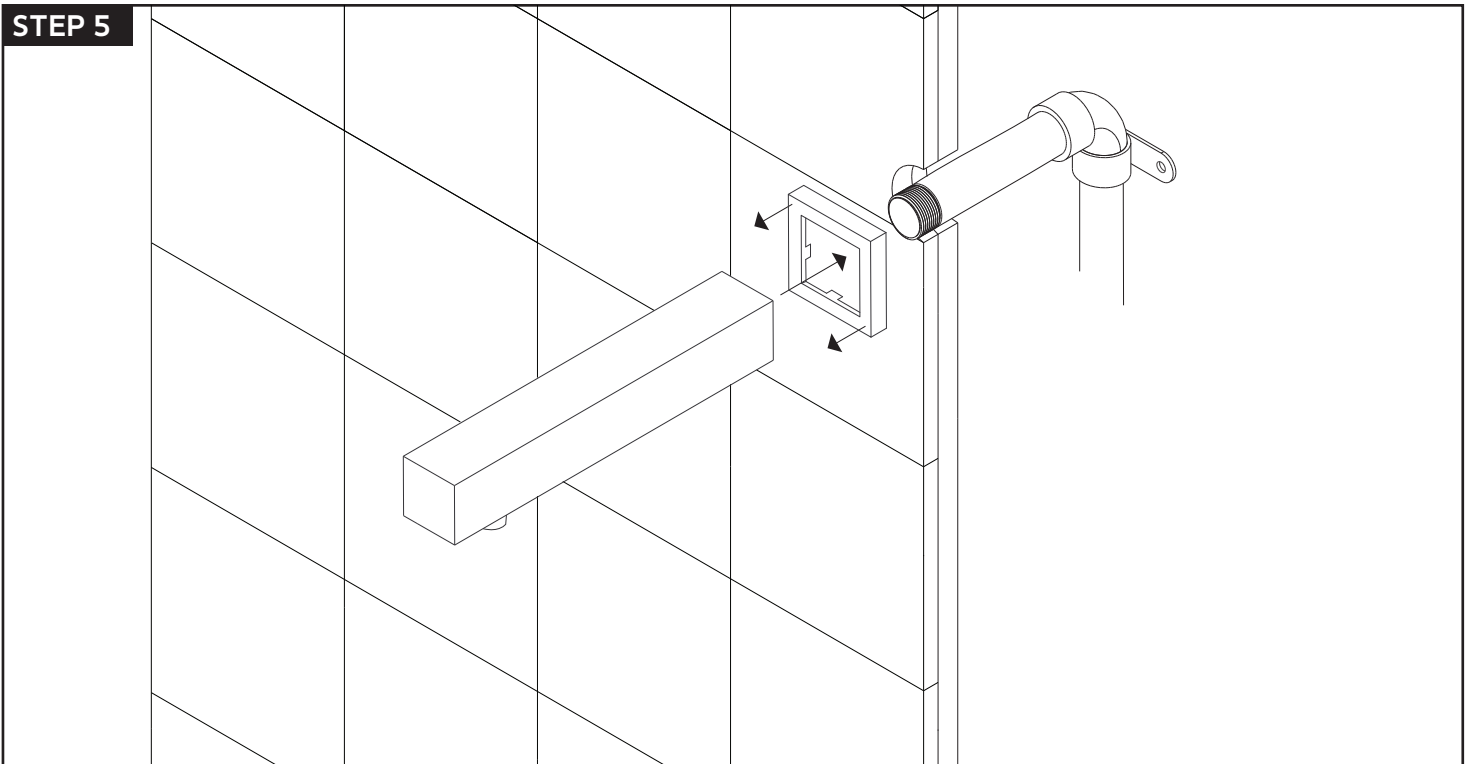


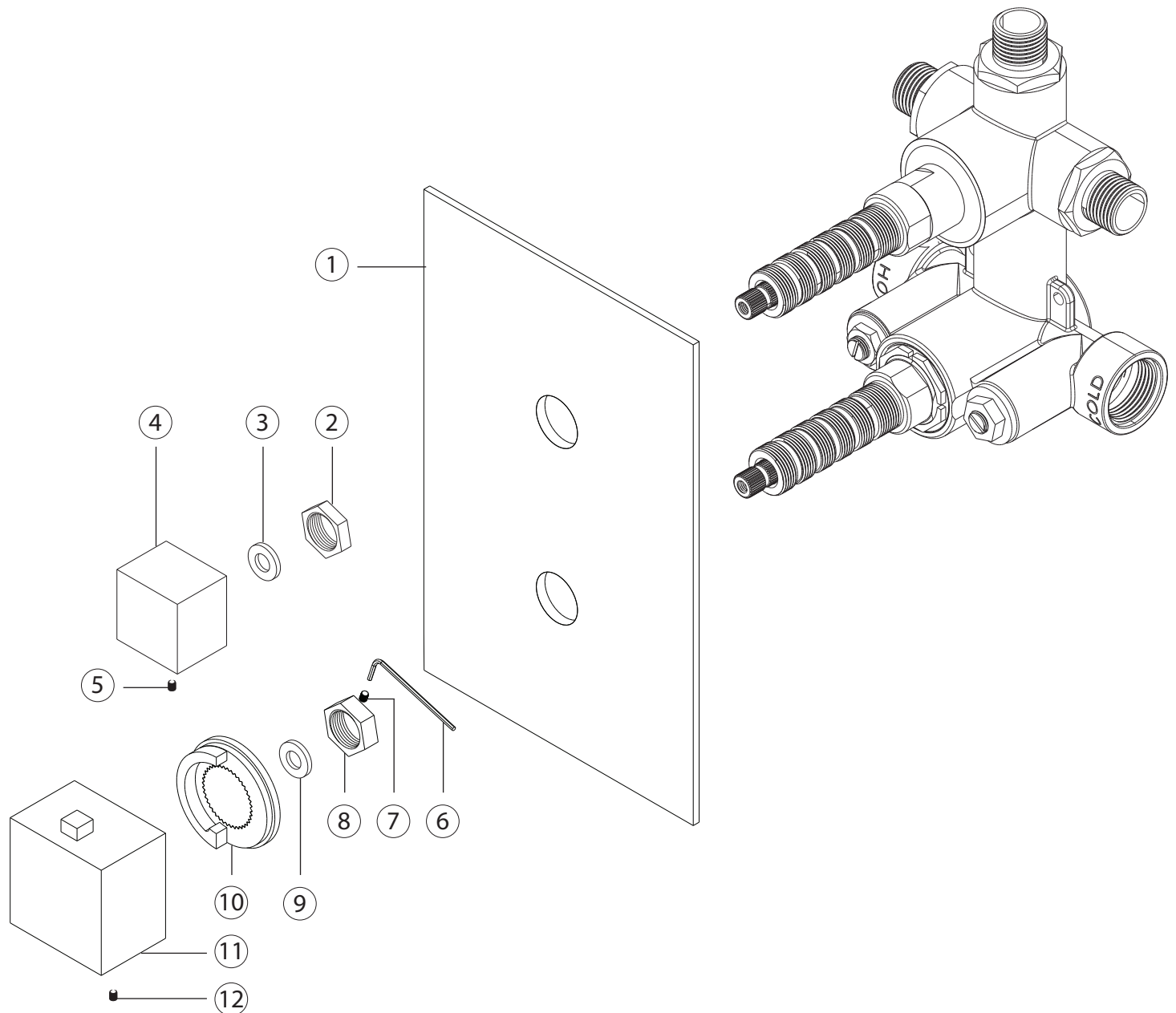


### STEP 4

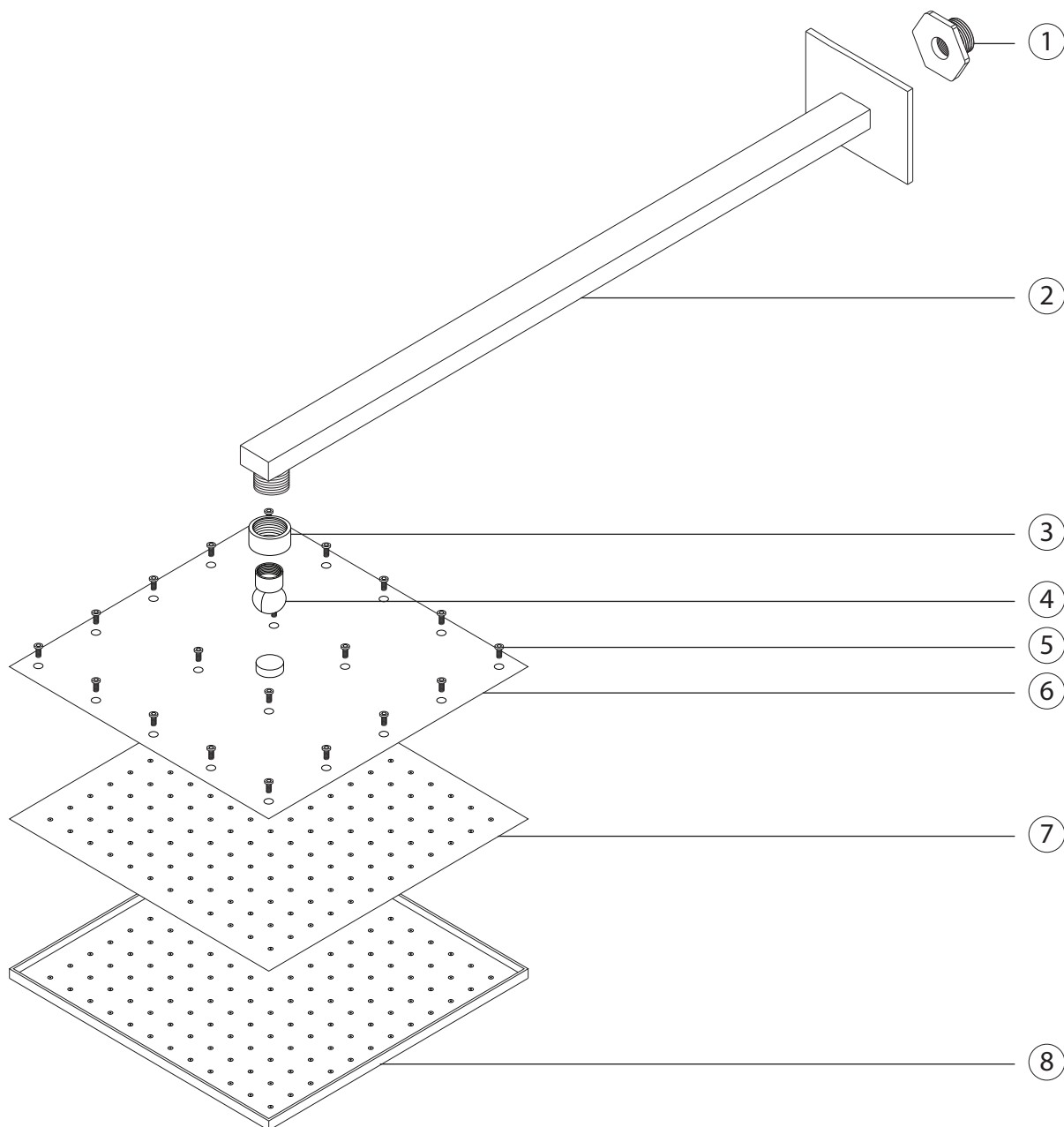


### STEP 5

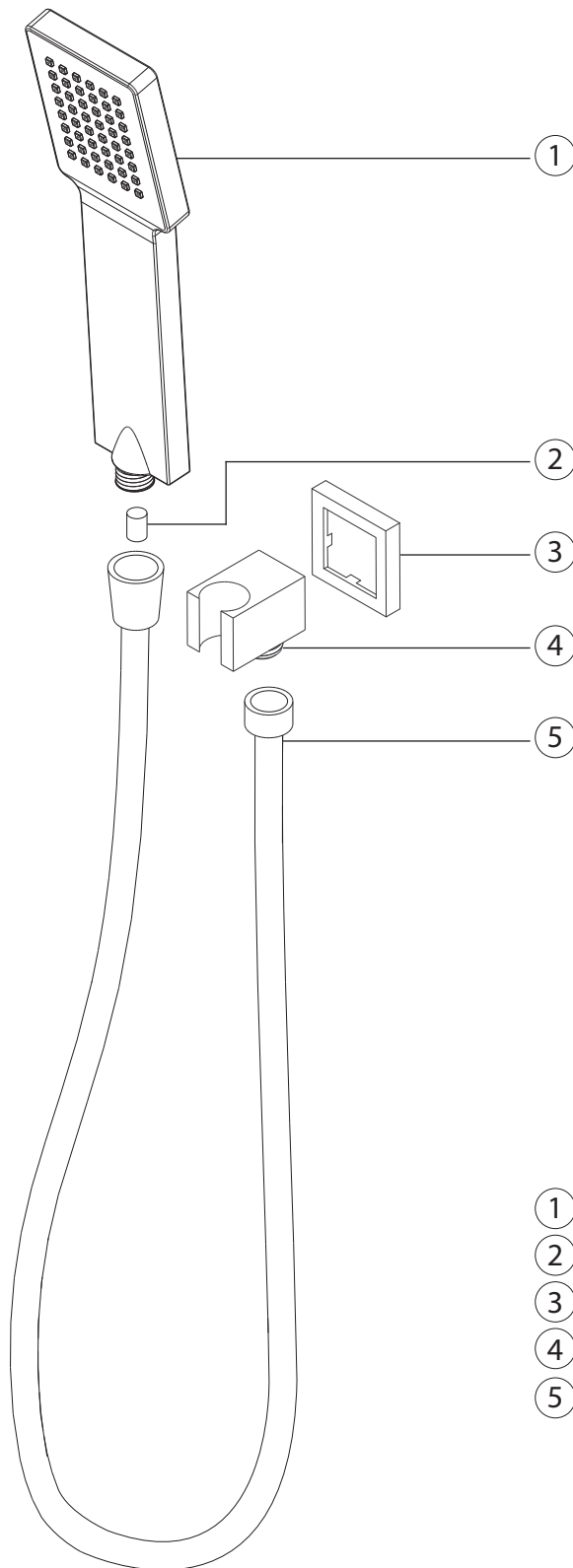




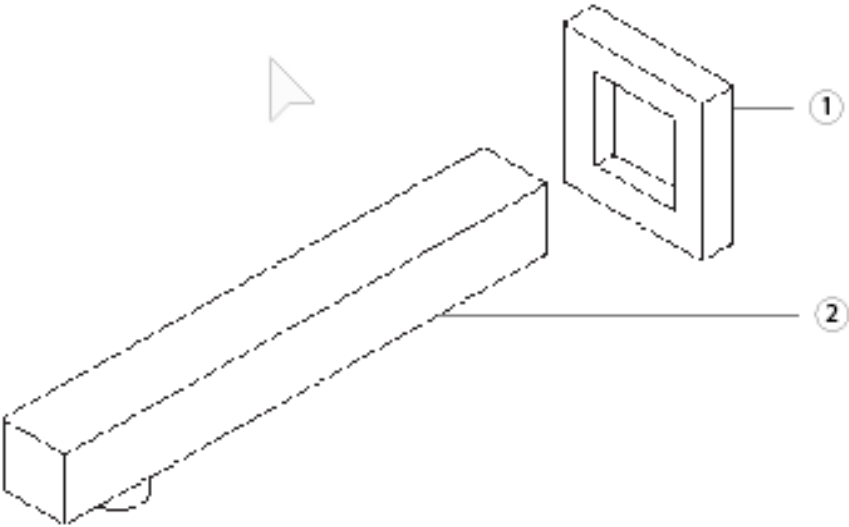
- |   |  |
|---|--|
| ① <b>ESCUTCHEON</b> F903B-59TK XP1            | ⑧ <b>THERMOSTAT LOCKING NUT</b> F903B-59TK XP8     |
| ② <b>DIVERTER LOCKING NUT</b> F903B-59TK XP2  | ⑨ <b>NYLON WASHER</b> F903B-59TK XP9               |
| ③ <b>NYLON WASHER</b> F903B-59TK XP3          | ⑩ <b>TEMPERATURE LIMITING RING</b> F903B-59TK XP10 |
| ④ <b>DIVERTER HANDLE</b> F903B-59TK XP4       | ⑪ <b>THERMOSTAT HANDLE</b> F903B-59TK XP11         |
| ⑤ <b>DIVERTER SET SCREW</b> F903B-59TK XP5    | ⑫ <b>THERMOSTAT SET SCREW</b> F903B-59TK XP12      |
| ⑥ <b>ALLEN WRENCH</b> F903B-59TK XP6          |  |
| ⑦ <b>LOCKING NUT SET SCREW</b> F903B-59TK XP7 |  |



- |  |   |
|--|---|
| ① <b>SHOWER FITTING</b> F907-50 XP1          | ⑦ <b>RUBBER MATRIX</b> F907-50 XP7      |
| ② <b>SHOWER ARM</b> F907-50 XP2              | ⑧ <b>SHOWER HEAD BOTTOM</b> F907-50 XP8 |
| ③ <b>SWIVEL ARM SECURING NUT</b> F907-50 XP3 |   |
| ④ <b>SWIVEL ARM</b> F907-50 XP4              |   |
| ⑤ <b>SHOWER HEAD SCREWS</b> F907-50 XP5      |   |
| ⑥ <b>SHOWER HEAD TOP</b> F907-50 XP6         |   |



- ① **HAND SHOWER** F703-6 XP1
- ② **HAND SHOWER CHECK VALVE** F703-6 XP2
- ③ **ESCUTCHEON PLATE** F703-6 XP3
- ④ **SHOWER OUTLET ELBOW AND HOLDER** F703-6 XP4
- ⑤ **SHOWER HOSE** F703-6 XP5



- 1 [Redacted]
- 2 [Redacted]



PS119

## CARE & MAINTENANCE

premier series shower set

For best results, keep the following in mind to retain the high quality finish of your artos® shower kit:

- Use a soft, dampened sponge or cloth. On no account should you use an abrasive material such as a brush, scouring pad or steel wool to clean surfaces.
- Test your cleaning agent solution on an inconspicuous area before applying to the entire product.
- Wipe surfaces clean and rinse completely with water immediately after applying cleaning agent.
- An ideal cleaning technique is to rinse faucet thoroughly and blot dry any water from the surface after each use.

## LIMITED LIFETIME WARRANTY

**artos® shower kits are guaranteed for life against leaks and finishing defects for as long as the original purchaser owns it.**

Damage caused by accident, misuse, abuse, improper installation, improper cleaning or alteration will void the warranty. This warranty does not cover replacement parts where damage is caused by normal wear and tear. Westover, Inc is not responsible for labor charges, installation or other incidental or consequential costs. Proof of purchase must be provided with all claims.

Please register this product online at [WWW.ARTOS.US.COM](http://WWW.ARTOS.US.COM)

ITEM NO. **PS119**  
SERIAL NO.