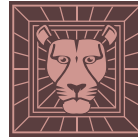


48"

Item Number:

- 650-V48-BKO
- 650-V48-BNM
- 650-V48-CWH
- 650-V48-UGR
- 650-V48-VBL

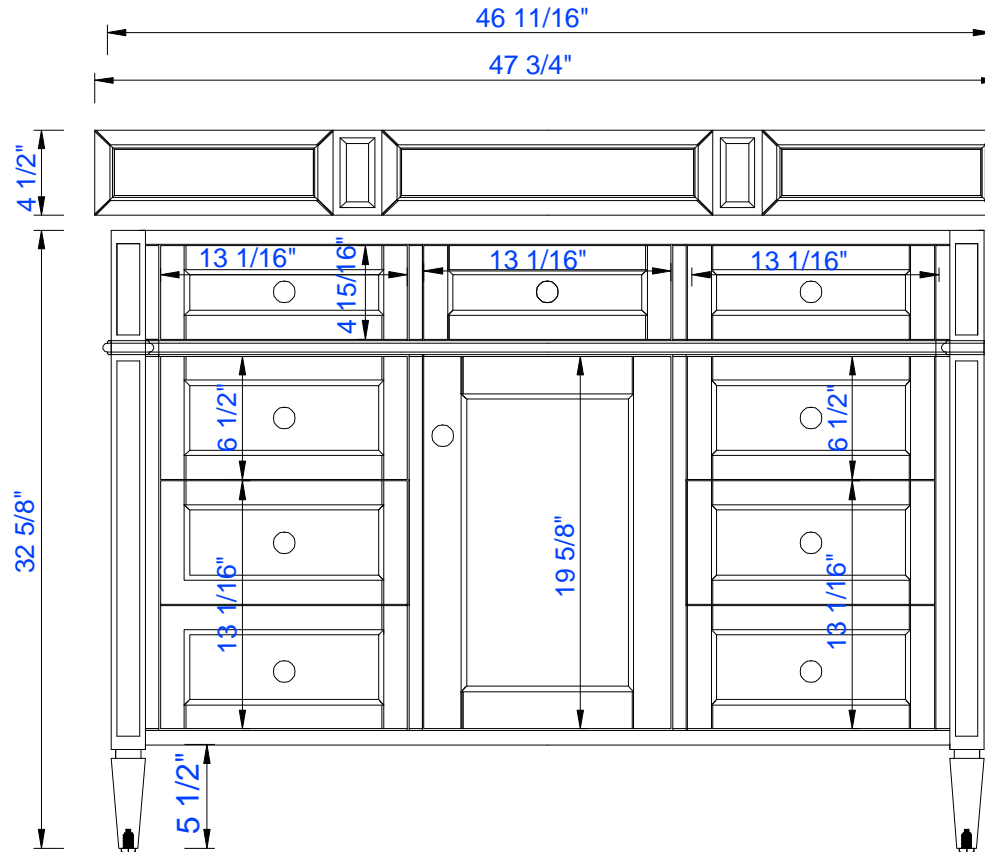
JAMES MARTIN



VANITIES™

Brittany 48" Cabinet

Diagrams with Dimensions
page 01 of 03



NOTE ONE: Countertops are not shown in these diagrams. (Cabinet Only)

NOTE TWO: Wood Backsplash (Shown) is designed for the molding detail to align with sinks in James Martin's Optional Countertops. Customers' own countertops and sinks may align differently.

Please consult our website for Countertop Diagrams: www.jamesmartinvanities.com

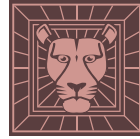
Version: 201906

48"

Item Number:

- 650-V48-BKO
- 650-V48-BNM
- 650-V48-CWH
- 650-V48-UGR
- 650-V48-VBL

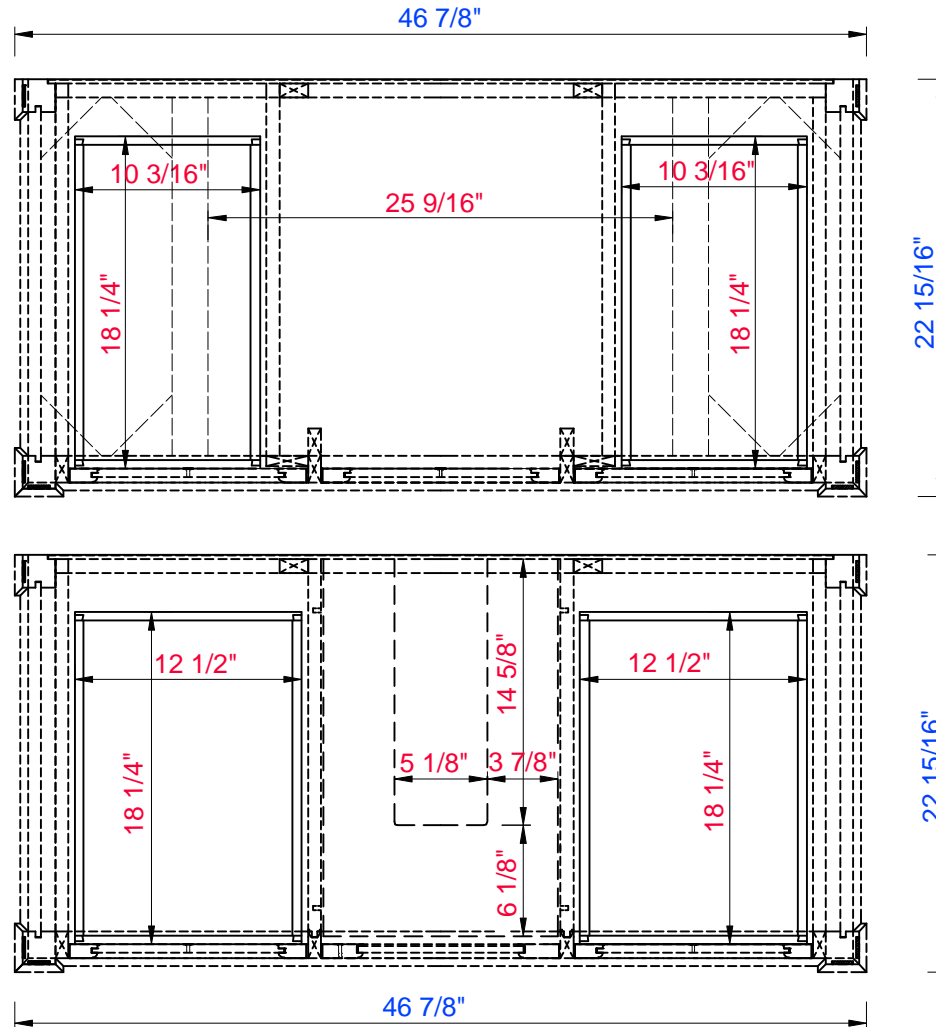
JAMES MARTIN



VANITIES™

Brittany 48" Cabinet

Diagrams with Dimensions
page 02 of 03



NOTE ONE: Countertops are not shown in these diagrams. (Cabinet Only)

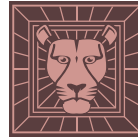
NOTE TWO: Internal Shelves (Shown) are designed to align with sinks in James Martin's Optional Countertops. Customers' own countertops and sinks may align differently, and modification may be required. Please consult our website for Countertop Diagrams: www.jamesmartinvanities.com

48"

Item Number:

- 650-V48-BKO
- 650-V48-BNM
- 650-V48-CWH
- 650-V48-UGR
- 650-V48-VBL

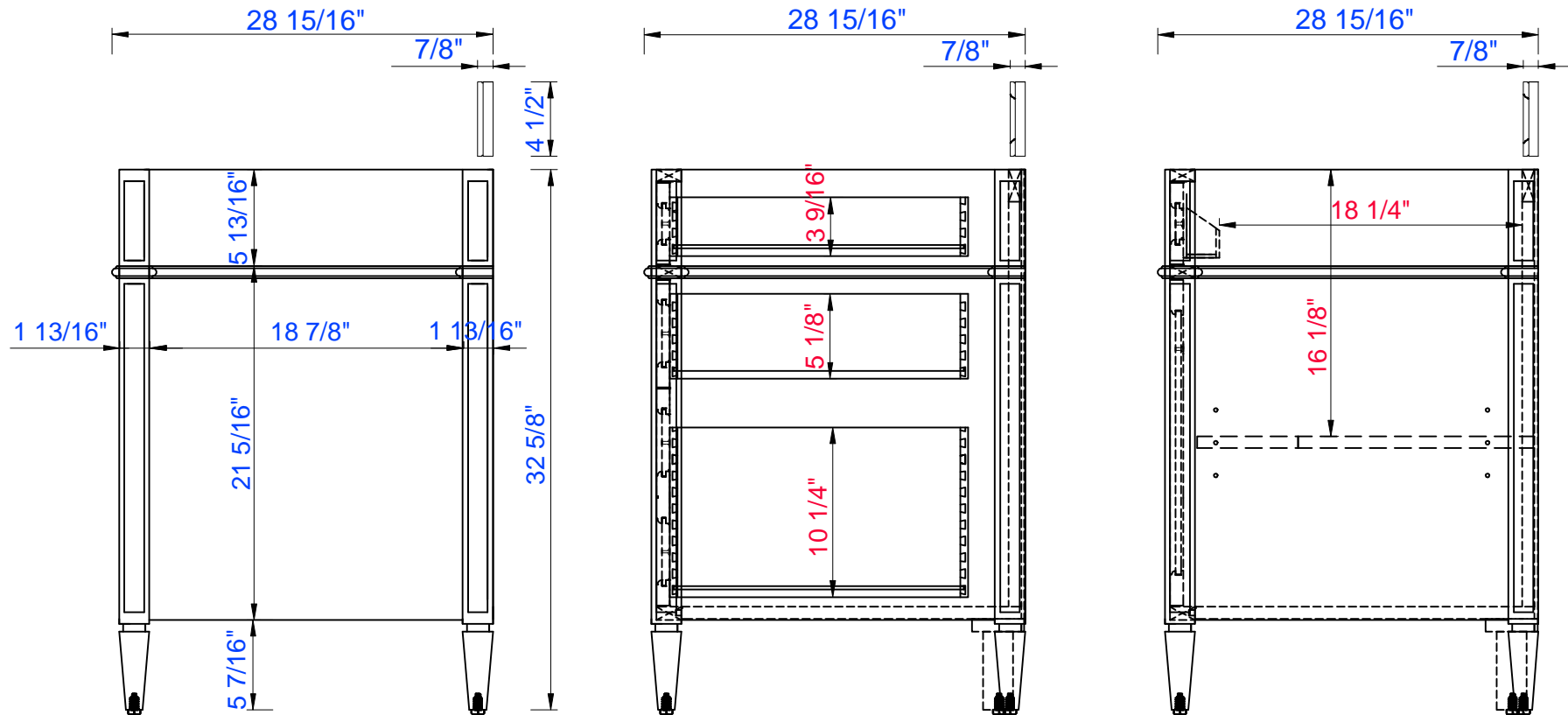
JAMES MARTIN



VANITIES™

Brittany 48" Cabinet

Diagrams with Dimensions
page 03 of 03



NOTE ONE: Countertops are not shown in these diagrams. (Cabinet Only)

NOTE TWO: Wood Backsplash (Shown) is designed for the molding detail to align with sinks in James Martin's Optional Countertops. Customers' own countertops and sinks may align differently.

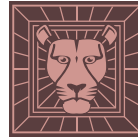
Please consult our website for Countertop Diagrams: www.jamesmartinvanities.com

1219mm

Item Number:

- 650-V48-BKO
- 650-V48-BNM
- 650-V48-CWH
- 650-V48-UGR
- 650-V48-VBL

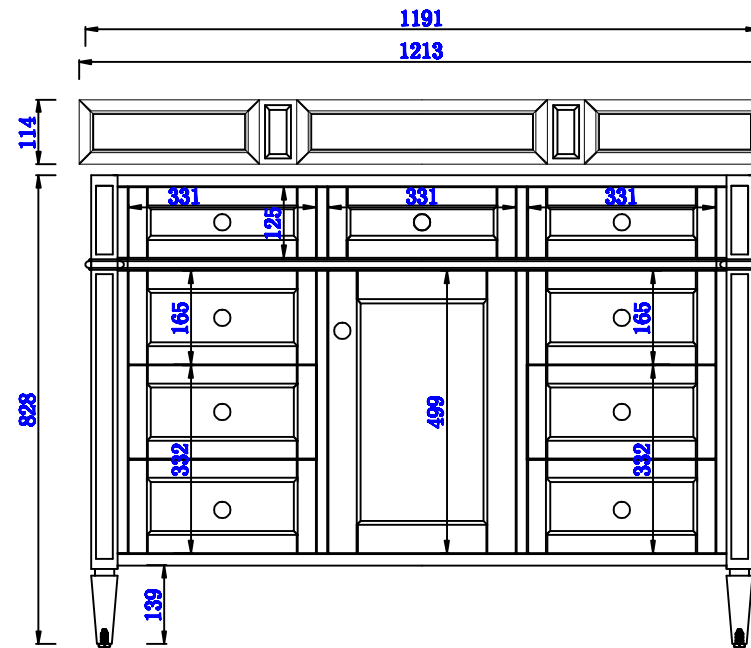
JAMES MARTIN



VANITIES™

Brittany 1219mm Cabinet

Diagrams with Dimensions
page 01 of 03



NOTE ONE: Countertops are not shown in these diagrams. (Cabinet Only)

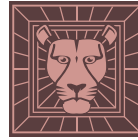
NOTE TWO: Wood Backsplash (Shown) is designed for the molding detail to align with sinks in James Martin's Optional Countertops. Customers' own countertops and sinks may align differently.

Please consult our website for Countertop Diagrams: www.jamesmartinvanities.com

Item Number:

- 650-V48-BKO
- 650-V48-BNM
- 650-V48-CWH
- 650-V48-UGR
- 650-V48-VBL

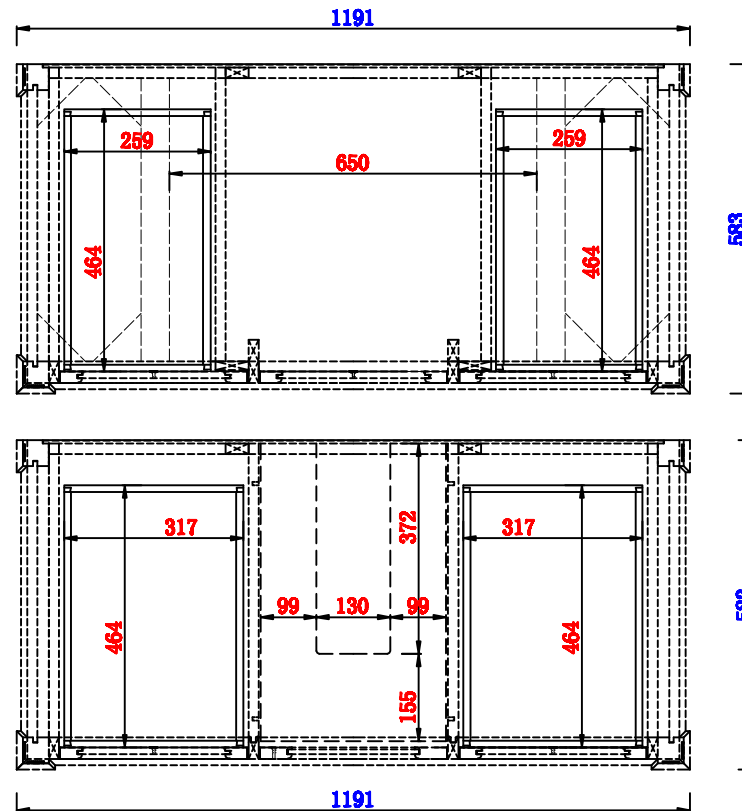
JAMES MARTIN



VANITIES™

Brittany 1219mm Cabinet

Diagrams with Dimensions
page 02 of 03



NOTE ONE: Countertops are not shown in these diagrams. (Cabinet Only)

NOTE TWO: Internal Shelves (Shown) are designed to align with sinks in James Martin's Optional Countertops. Customers' own countertops and sinks may align differently, and modification may be required. Please consult our website for Countertop Diagrams: www.jamesmartinvanities.com

1219mm

Item Number:

- 650-V48-BKO
- 650-V48-BNM
- 650-V48-CWH
- 650-V48-UGR
- 650-V48-VBL

JAMES MARTIN

VANITIES™

Brittany 1219mm Cabinet

Diagrams with Dimensions
page 03 of 03

The diagram consists of three views of the cabinet: front, side, and back.

- Front View (Left):** Shows a cabinet with a total width of 583mm and a total height of 828mm. The countertop area is 480mm wide and 148mm high. The cabinet body is 46mm wide on each side. The base is 138mm high.
- Side View (Middle):** Shows the cabinet's depth of 583mm and a total height of 828mm. It features three shelves with heights of 90mm, 130mm, and 260mm from the bottom.
- Back View (Right):** Shows the cabinet's depth of 583mm and a total height of 828mm. The back panel is 464mm wide and 409mm high.

NOTE ONE: Countertops are not shown in these diagrams. (Cabinet Only)

NOTE TWO: Wood Backsplash (Shown) is designed for the molding detail to align with sinks in James Martin's Optional Countertops. Customers' own countertops and sinks may align differently.

Please consult our website for Countertop Diagrams: www.jamesmartinvanities.com

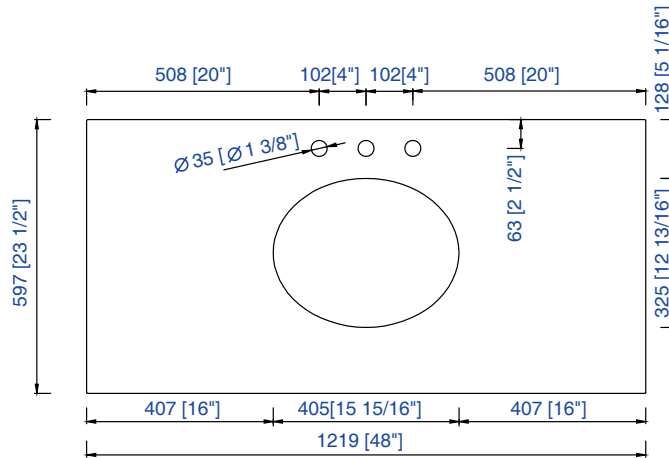
Version: 201906



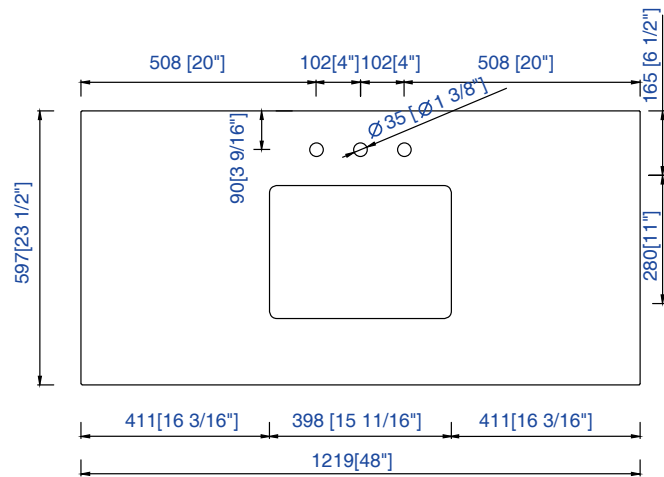
48" Vanity Top Spec Sheet

James Martin Vanities Company always recommends you consult and/or hire a professional contractor when installing your vanity cabinet and top.

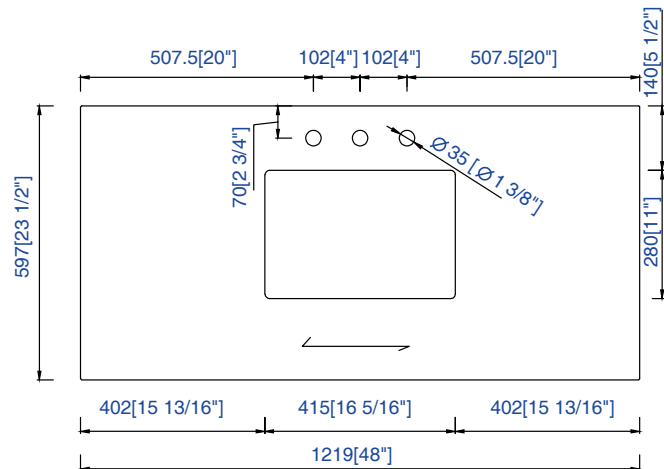
3cm/1.18"
Countertop



James Martin - Natural Stone Countertop Measurement Specification



James Martin - Natural Stone & Solid Surface Countertop Measurement Specification



James Martin - Quartz Countertop Measurement Specification