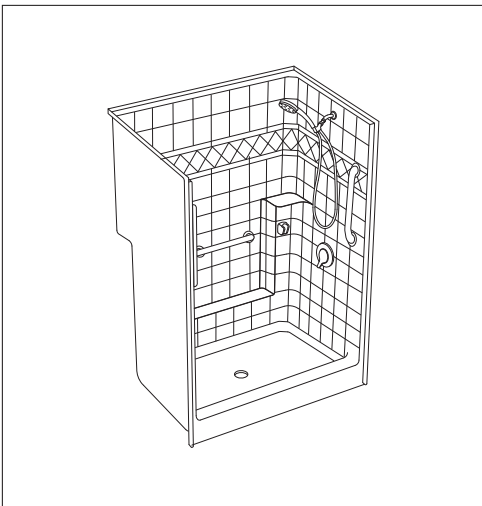




## Classic Valve Kit

*New Construction One-Piece Showers*



### Specification Manual

**42" x 42" x 80"**

Low Threshold Shower Stall & Kit

*Classic Package with Stainless Steel Grab Bars & Shower Valve Kit*

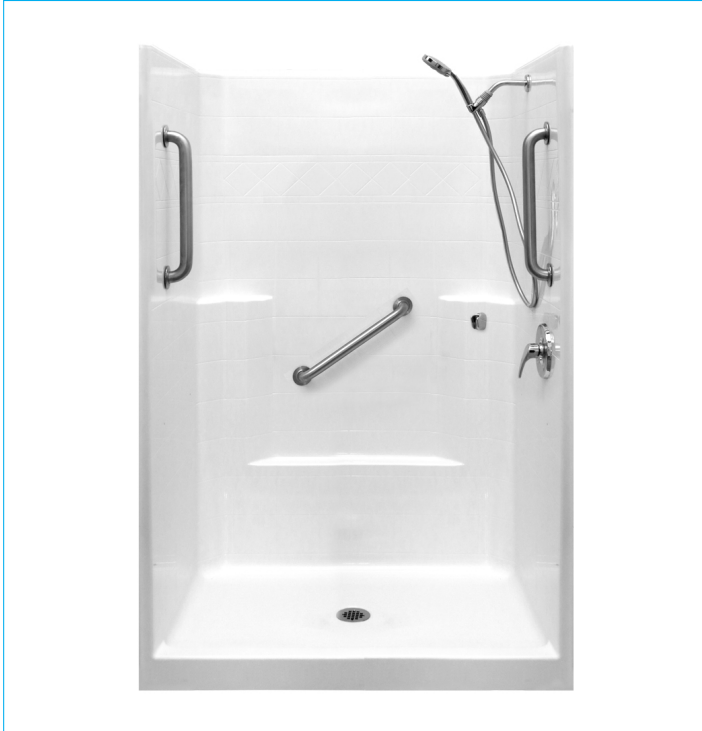
For more product information visit [ellasbubbles.com](http://ellasbubbles.com)  
or call Ella's Bubbles toll free at 1-800-480-6850

# Classic Valve Kit

42" x 42" x 80" New Construction One-Piece Shower  
Classic Package with Stainless Steel Grab Bars & Shower Valve Kit



## HANDED BY VALVE



Right-hand valve shown



Shipping Container



Preassembled Valve & Faucet

## Representing Model Numbers

- ESM4242SHLWHT-VPKG1
- ESM4242SHRBON-VPKG1
- ESM4242SHLBON-VPKG1
- ESM4242SHRBIS-VPKG1
- ESM4242SHLBIS-VPKG1
- ESM4242SHRBIS-VPKG1

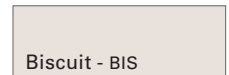
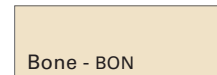
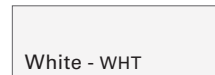
## Technical Information

Material: Gelcoat Fiberglass  
Overall Dimensions: 42 in. x 42 in. x 80 in.  
Net Weight: 190 lbs.  
Drain Location: Center  
Threshold Height: 4 in.  
Shipping Dimensions: 53 in. x 42 in. x 84 in.  
Shipping Weight: 310 lbs.

## Shower Stall and Package Options

### Available Colors

\* Color tiles intended for reference only.



### Available Packages

- Standard
- Standard Valve Kit
- Classic Grab Bar Kit
- Classic Valve Kit
- Ultimate Grab Bar Kit
- Ultimate Valve Kit
- White Grab Bar Kit
- White Grab Bar Valve Kit
- Imperial Grab Bar Kit
- Imperial Valve Kit
- Imperial Valve & Seat Kit

## Warranty

- Ella's Shower Stall: Three (3) Year Limited Warranty
- Zurn Valve: Three (3) Year Warranty
- Hansgrohe Shower Items: One (1) Year Warranty

\* For more information please visit [ellabubbles.com](http://ellabubbles.com)

## Codes

This unit shall meet UPC, CSA B45.5, IAPMOZ124-11, Home Innovation Research Lab, and shall meet the requirements of the Southern Building Code.



MANUFACTURED AND ASSEMBLED IN  
THE UNITED STATES OF AMERICA

## Classic Valve Kit

42" x 42" x 80" New Construction One-Piece Shower  
Classic Package with Stainless Steel Grab Bars & Shower Valve Kit

**ella**  
by ella's bubbles

### PACKAGE ACCESSORIES



Zurn Shower Lever Handle  
and Etched Cover Plate



Zurn Pressure Balancing  
Quick Connect Valve



Hansgrohe Cromas E 100  
3-Jet Handshower



Hansgrohe Techniflex  
Hose - 63 in.



Hansgrohe Showerarm  
and Cover Plate - 6 in.



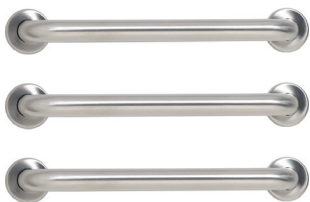
Hansgrohe Showerarm Mount  
for Handshower



Hansgrohe E Wall Mount  
Handshower Bracket



Chrome Strainer Brass Drain  
with Friction Seal - 2 in.



18" Straight Stainless Steel  
Grab Bars (3)

For more product information on these accessories  
please visit [www.hansgrohe.com](http://www.hansgrohe.com) or [www.zurn.com](http://www.zurn.com)



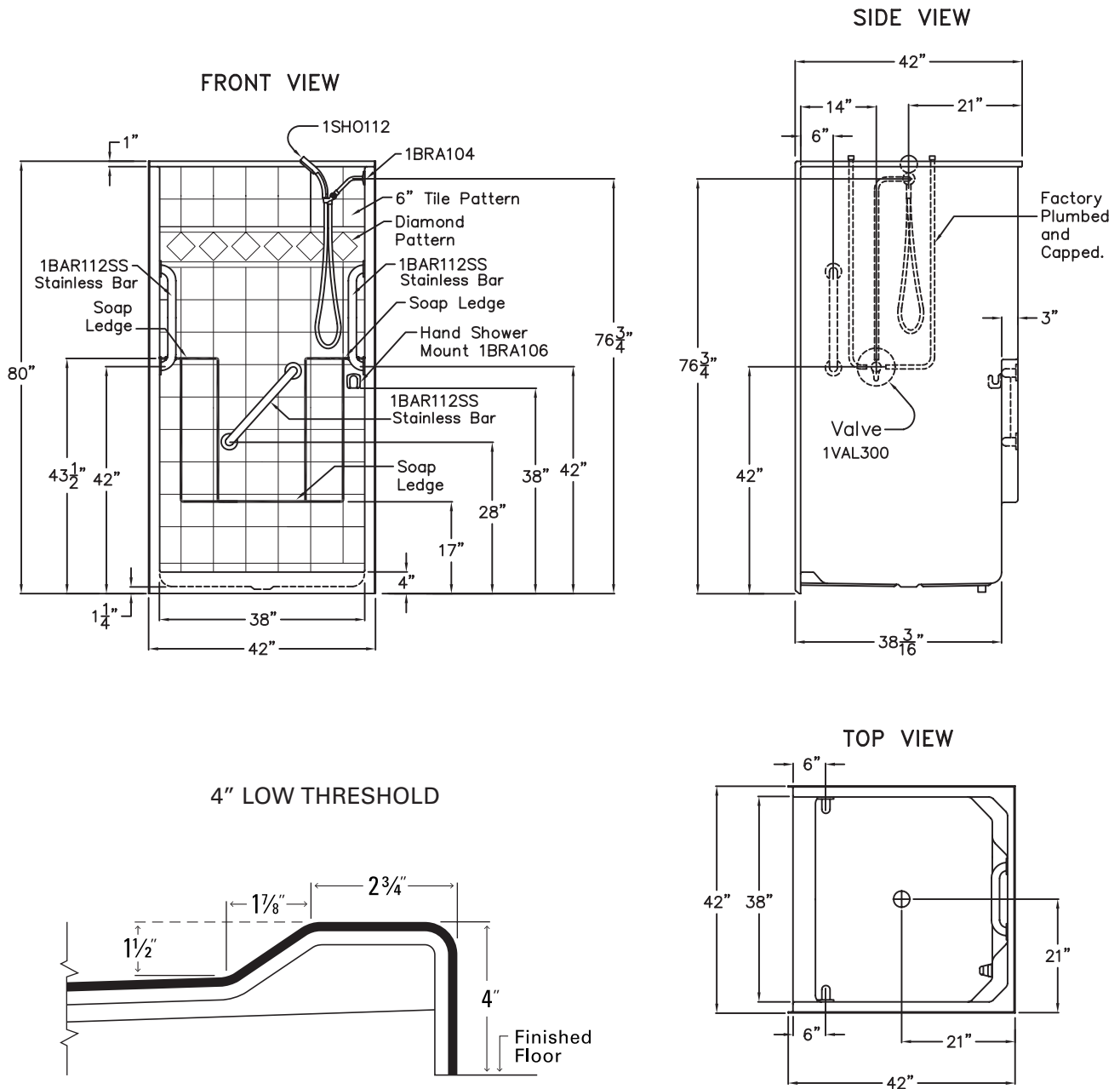
# Classic Valve Kit

42" x 42" x 80" New Construction One-Piece Shower  
 Classic Package with Stainless Steel Grab Bars & Shower Valve Kit



## SPECIFICATION DRAWINGS

Due to the nature of the materials, dimensions may vary  $\pm \frac{1}{2}$  in.



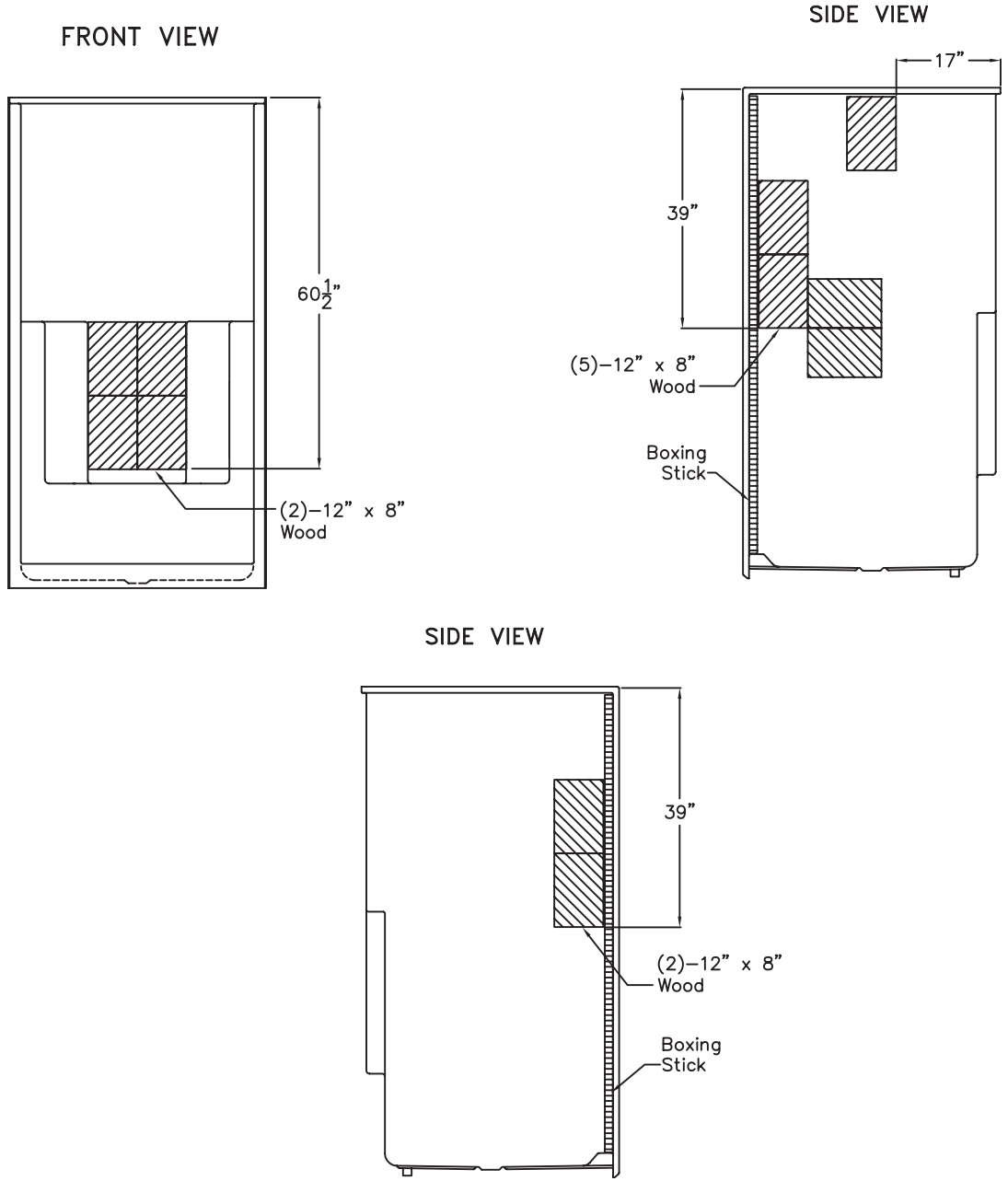
# Classic Valve Kit

42" x 42" x 80" New Construction One-Piece Shower  
Classic Package with Stainless Steel Grab Bars & Shower Valve Kit



## BOARD PLACEMENT DRAWING

Due to the nature of the materials, dimensions may vary  $\pm 1/2$  in.



## Classic Valve Kit

42" x 42" x 80" New Construction One-Piece Shower  
Classic Package with Stainless Steel Grab Bars & Shower Valve Kit

**ella**  
by ella's bubbles

### PRODUCT FEATURES

#### Luxurious & Safe Design

- Architectural subway design tile pattern with diamond accent pattern for a traditionally modern aesthetic
- Integrated Grip Sure™ floor texture for safe mobility
- Molded soap, shampoo & foot ledges for added convenience



#### Strength & Durability

- Premium marine-grade, gelcoat & fiberglass polyester resin for a beautiful, long-lasting shower surface
- Reinforced 3/8" wood paneled walls provides flexibility for installing grab bars at any needed height
- Twice the weight and the raw materials used in the production of our showers than listed by any of our competitors



#### Shower Door Friendly

- Ella's showers are fabricated to allow the options of using a curtain or shower door
- At the base, square corners above the low threshold support framed or frameless shower door installation



#### Availability

- Ella's showers are manufactured, inspected & shipped directly from the factory within 5-7 business days
- Rush orders are available upon request (white only)
- No order is too big or too small



#### Contractor Friendly

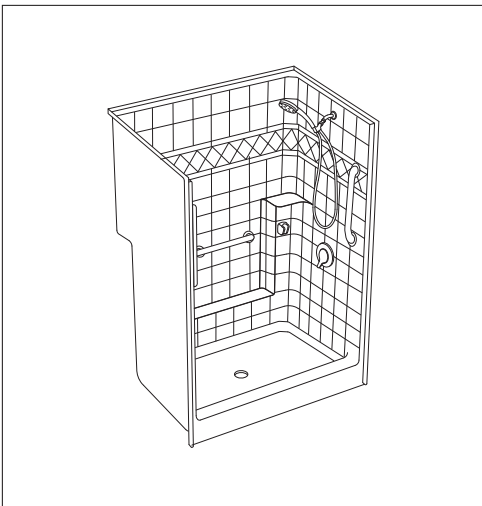
- Ella's One-Piece showers are preassembled at the factory and require no hardware installation on jobsite
- Compact and durable packaging for easy handling on the jobsite
- Shipped in heavy duty crating to protect the product in transit





## Classic Valve Kit

*New Construction One-Piece Showers*



### Specification Manual

**48" x 37" x 80"**

Low Threshold Shower Stall & Kit

*Classic Package with Stainless Steel Grab Bars and Shower Valve Kit*

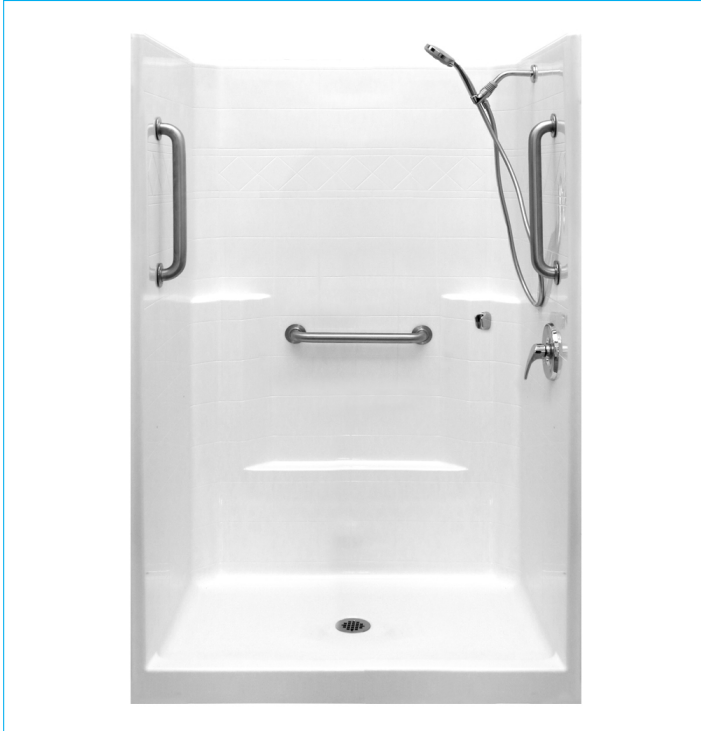
For more product information visit [ellasbubbles.com](http://ellasbubbles.com)  
or call Ella's Bubbles toll free at 1-800-480-6850

# Classic Valve Kit

48" x 37" x 80" New Construction One-Piece Shower  
Classic Package with Stainless Steel Grab Bars and Shower Valve Kit



## HANDED BY VALVE



Right-hand valve shown



Shipping Container



Preassembled Valve & Faucet

## Representing Model Numbers

- ESM4836SHLWHT-VPKG1
- ESM4836SHLBON-VPKG1
- ESM4836SHLBIS-VPKG1
- ESM4836SHRWHT-VPKG1
- ESM4836SHRBON-VPKG1
- ESM4836SHRBIS-VPKG1

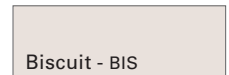
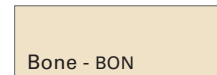
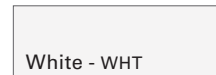
## Technical Information

Material: Gelcoat Fiberglass  
Overall Dimensions: 48 in. x 37 in. x 80 in.  
Net Weight: 170 lbs.  
Drain Location: Center  
Threshold Height: 4 in.  
Shipping Dimensions: 53 in. x 42 in. x 84 in.  
Shipping Weight: 290 lbs.

## Shower Stall and Package Options

### Available Colors

\* Color tiles intended for reference only.



### Available Packages

- |                       |                           |
|-----------------------|---------------------------|
| Standard              | White Grab Bar Kit        |
| Standard Valve Kit    | White Grab Bar Valve Kit  |
| Classic Grab Bar Kit  | Imperial Grab Bar Kit     |
| Classic Valve Kit     | Imperial Valve Kit        |
| Ultimate Grab Bar Kit | Imperial Valve & Seat Kit |
| Ultimate Valve Kit    |                           |

## Warranty

- Ella's Shower Stall: Three (3) Year Limited Warranty
- Zurn Valve: Three (3) Year Warranty
- Hansgrohe Shower Items: One (1) Year Warranty

\* For more information please visit [ellabubbles.com](http://ellabubbles.com)

## Codes

This unit shall meet UPC, CSA B45.5, IAPMOZ124-11, Home Innovation Research Lab, and shall meet the requirements of the Southern Building Code.



MANUFACTURED AND ASSEMBLED IN  
THE UNITED STATES OF AMERICA



## Classic Valve Kit

48" x 37" x 80" New Construction One-Piece Shower  
Classic Package with Stainless Steel Grab Bars and Shower Valve Kit

**ella**  
by ella's bubbles

### PACKAGE ACCESSORIES



Zurn Shower Lever Handle  
and Etched Cover Plate



Zurn Pressure Balancing  
Quick Connect Valve



Hansgrohe Cromo E 100  
3-Jet Handshower



Hansgrohe Techniflex  
Hose - 63 in.



Hansgrohe Showerarm  
and Cover Plate - 6 in.



Hansgrohe Showerarm Mount  
for Handshower



Hansgrohe E Wall Mount  
Handshower Bracket



Chrome Strainer Brass Drain  
with Friction Seal - 2 in.



18" Straight Stainless Steel  
Grab Bars (3)

For more product information on these accessories  
please visit [www.hansgrohe.com](http://www.hansgrohe.com) or [www.zurn.com](http://www.zurn.com)



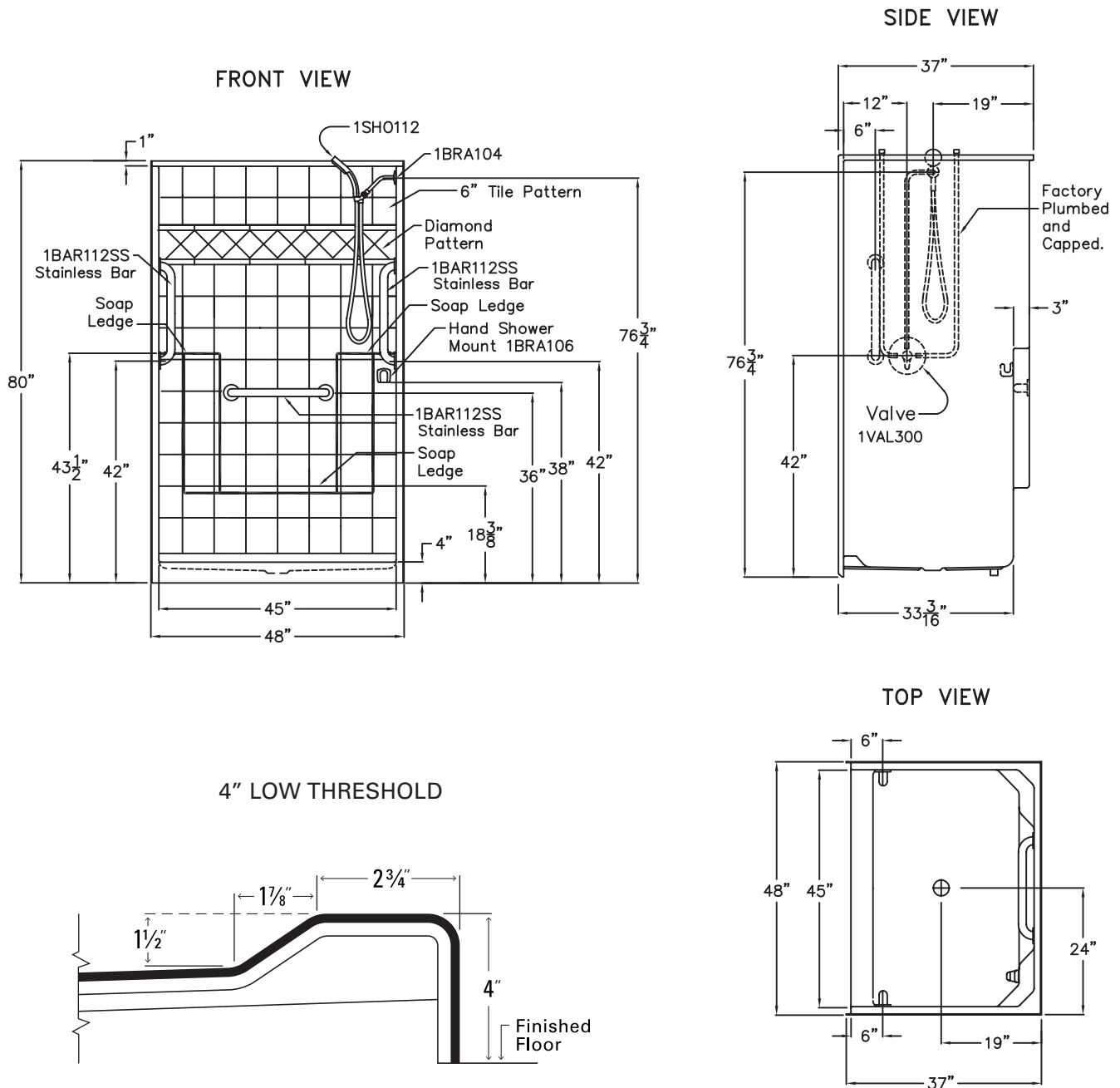
# Classic Valve Kit

48" x 37" x 80" New Construction One-Piece Shower  
 Classic Package with Stainless Steel Grab Bars and Shower Valve Kit



## SPECIFICATION DRAWINGS

Due to the nature of the materials, dimensions may vary  $\pm 1/2$  in.



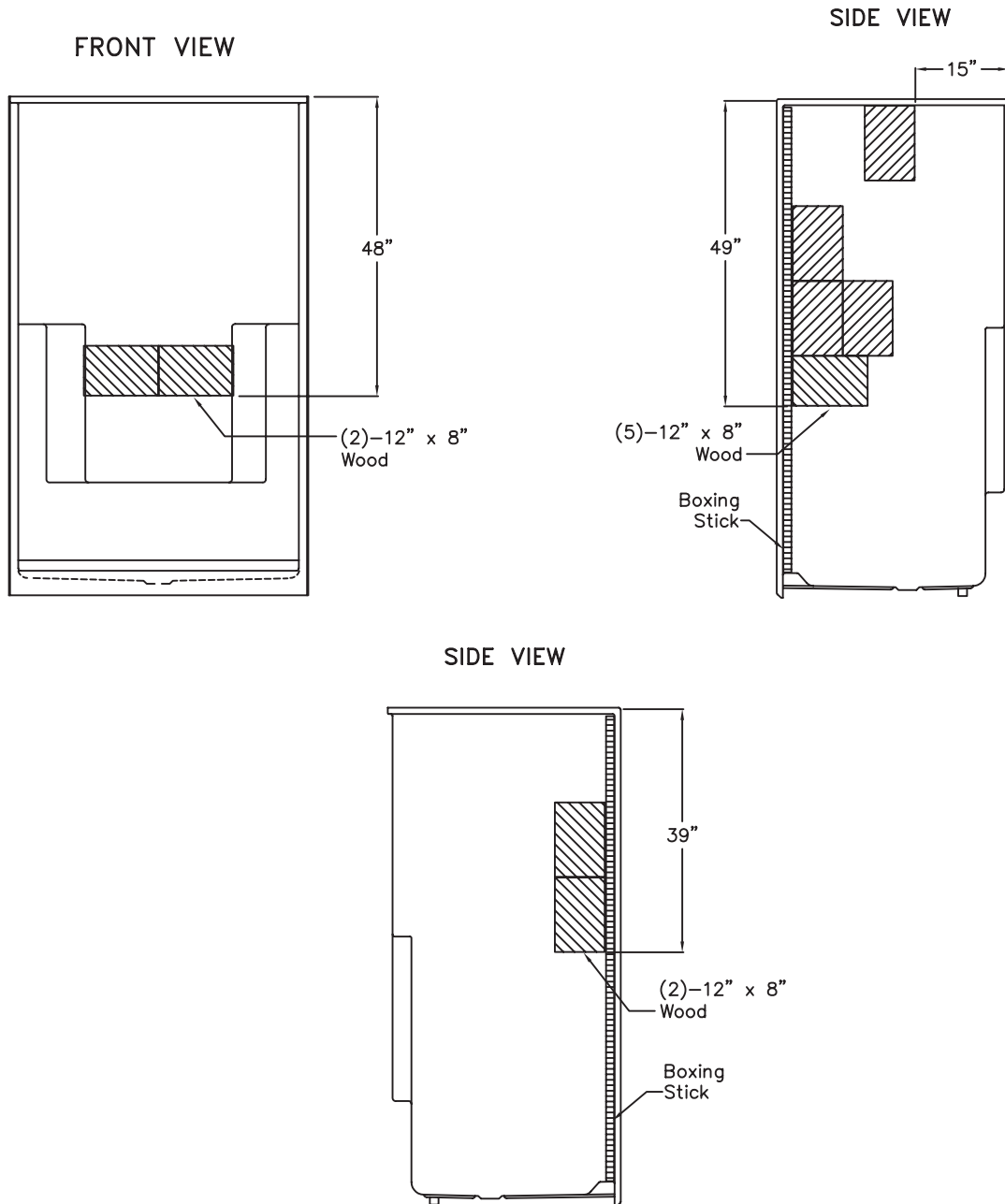
# Classic Valve Kit

48" x 37" x 80" New Construction One-Piece Shower  
Classic Package with Stainless Steel Grab Bars and Shower Valve Kit



## BOARD PLACEMENT DRAWING

Due to the nature of the materials, dimensions may vary  $\pm 1/2$  in.



## Classic Valve Kit

48" x 37" x 80" New Construction One-Piece Shower  
*Classic Package with Stainless Steel Grab Bars and Shower Valve Kit*

**ella**  
by ella's bubbles

### PRODUCT FEATURES

#### Luxurious & Safe Design

- Architectural subway design tile pattern with diamond accent pattern for a traditionally modern aesthetic
- Integrated Grip Sure™ floor texture for safe mobility
- Molded soap, shampoo & foot ledges for added convenience



#### Strength & Durability

- Premium marine-grade, gelcoat & fiberglass polyester resin for a beautiful, long-lasting shower surface
- Reinforced 3/8" wood paneled walls provides flexibility for installing grab bars at any needed height
- Twice the weight and the raw materials used in the production of our showers than listed by any of our competitors



#### Shower Door Friendly

- Ella's showers are fabricated to allow the options of using a curtain or shower door
- At the base, square corners above the low threshold support framed or frameless shower door installation



#### Availability

- Ella's showers are manufactured, inspected & shipped directly from the factory within 5-7 business days
- Rush orders are available upon request (white only)
- No order is too big or too small



#### Contractor Friendly

- Ella's One-Piece showers are preassembled at the factory and require no hardware installation on jobsite
- Compact and durable packaging for easy handling on the jobsite
- Shipped in heavy duty crating to protect the product in transit



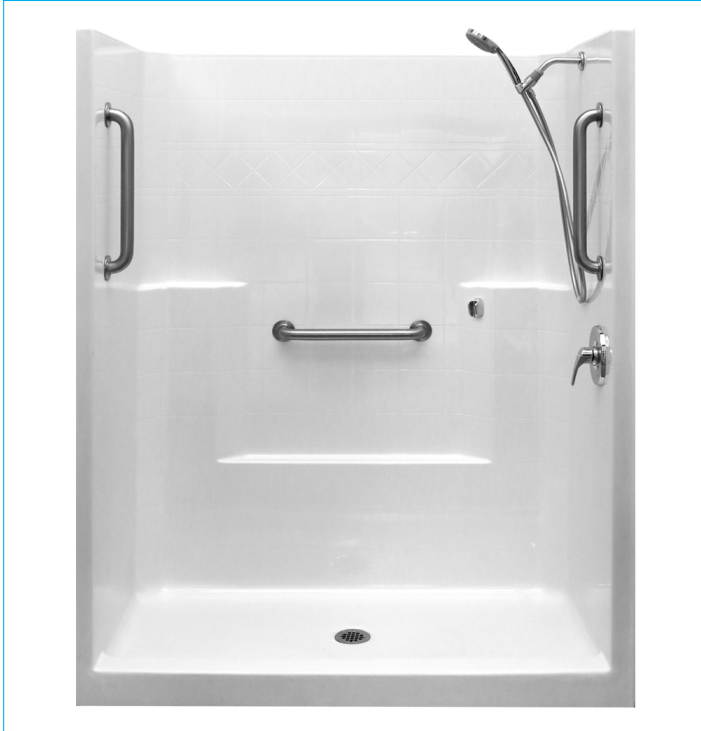


# Classic Valve Kit

60" x 33" x 77" New Construction One-Piece Shower  
Classic Package with Stainless Steel Grab Bars and Shower Valve Kit



## HANDED BY VALVE



Right-hand valve shown



Shipping Container



Preassembled Valve & Faucet

## Representing Model Numbers

- ESM6033SHLWHT-VPKG1
- ESM6033SHLBON-VPKG1
- ESM6033SHLBIS-VPKG1
- ESM6033SHRWHT-VPKG1
- ESM6033SHRBON-VPKG1
- ESM6033SHRBIS-VPKG1

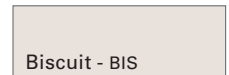
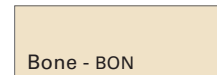
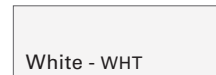
## Technical Information

Material: Gelcoat Fiberglass  
Overall Dimensions: 60 in. x 33 in. x 77 in.  
Net Weight: 170 lbs.  
Drain Location: Center  
Threshold Height: 4 in.  
Shipping Dimensions: 67 in. x 43 in. x 84 in.  
Shipping Weight: 310 lbs.

## Shower Stall and Package Options

### Available Colors

\* Color tiles intended for reference only.



### Available Packages

- Standard
- Standard Valve Kit
- Classic Grab Bar Kit
- Classic Valve Kit
- Ultimate Grab Bar Kit
- Ultimate Valve Kit
- White Grab Bar Kit
- White Grab Bar Valve Kit
- Imperial Grab Bar Kit
- Imperial Valve Kit
- Imperial Valve & Seat Kit

## Warranty

- Ella's Shower Stall: Three (3) Year Limited Warranty
- Zurn Valve: Three (3) Year Warranty
- Hansgrohe Shower Items: One (1) Year Warranty

\* For more information please visit [ellabubbles.com](http://ellabubbles.com)

## Codes

This unit shall meet UPC, CSA B45.5, IAPMOZ124-11, Home Innovation Research Lab, and shall meet the requirements of the Southern Building Code.



MANUFACTURED AND ASSEMBLED IN  
THE UNITED STATES OF AMERICA

## Classic Valve Kit

60" x 33" x 77" New Construction One-Piece Shower  
Classic Package with Stainless Steel Grab Bars and Shower Valve Kit

**ella**  
by ella's bubbles

### PACKAGE ACCESSORIES



Zurn Shower Lever Handle  
and Etched Cover Plate



Zurn Pressure Balancing  
Quick Connect Valve



Hansgrohe Cromo E 100  
3-Jet Handshower



Hansgrohe Techniflex  
Hose - 63 in.



Hansgrohe Showerarm  
and Cover Plate - 6 in.



Hansgrohe Showerarm Mount  
for Handshower



Hansgrohe E Wall Mount  
Handshower Bracket



Chrome Strainer Brass Drain  
with Friction Seal - 2 in.



18" Straight Stainless Steel  
Grab Bars (3)

For more product information on these accessories  
please visit [www.hansgrohe.com](http://www.hansgrohe.com) or [www.zurn.com](http://www.zurn.com)



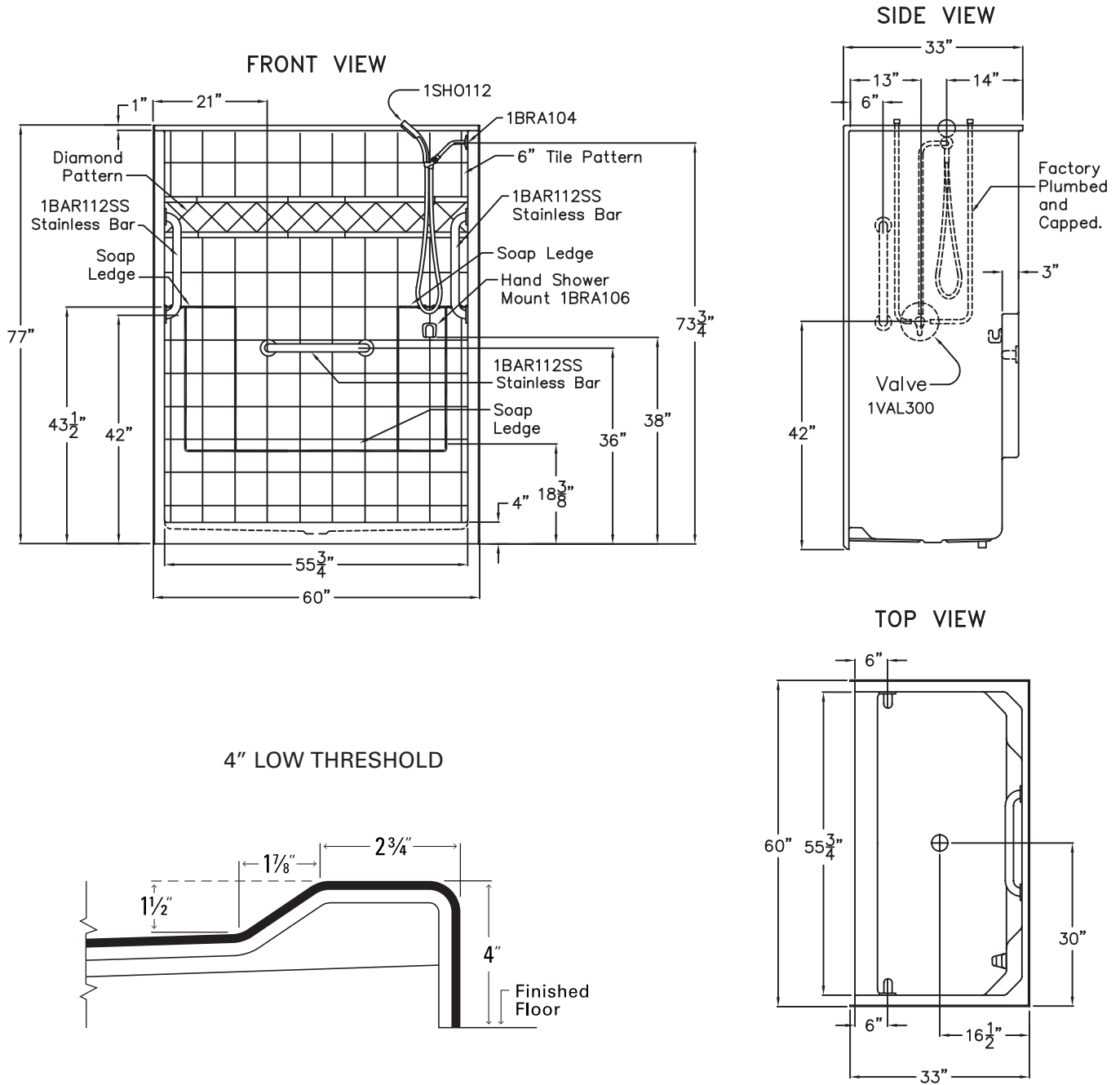
# Classic Valve Kit

60" x 33" x 77" New Construction One-Piece Shower  
 Classic Package with Stainless Steel Grab Bars and Shower Valve Kit



## SPECIFICATION DRAWINGS

Due to the nature of the materials, dimensions may vary  $\pm 1/2$  in.





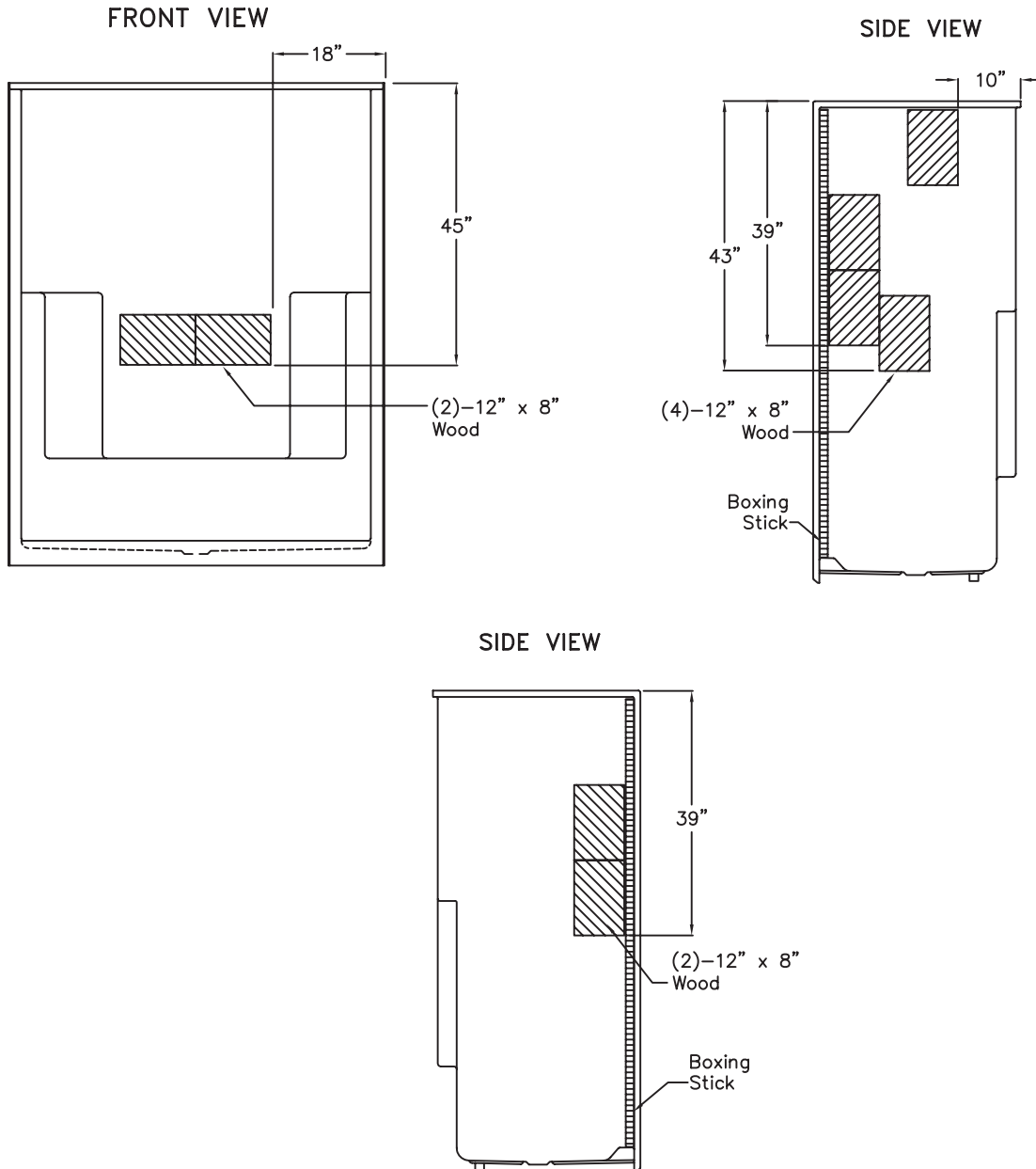
# Classic Valve Kit

60" x 33" x 77" New Construction One-Piece Shower  
Classic Package with Stainless Steel Grab Bars and Shower Valve Kit



## BOARD PLACEMENT DRAWING

Due to the nature of the materials, dimensions may vary  $\pm 1/2$  in.



## Classic Valve Kit

60" x 33" x 77" New Construction One-Piece Shower  
Classic Package with Stainless Steel Grab Bars and Shower Valve Kit



### PRODUCT FEATURES

#### Luxurious & Safe Design

- Architectural subway design tile pattern with diamond accent pattern for a traditionally modern aesthetic
- Integrated Grip Sure™ floor texture for safe mobility
- Molded soap, shampoo & foot ledges for added convenience



#### Strength & Durability

- Premium marine-grade, gelcoat & fiberglass polyester resin for a beautiful, long-lasting shower surface
- Reinforced 3/8" wood paneled walls provides flexibility for installing grab bars at any needed height
- Twice the weight and the raw materials used in the production of our showers than listed by any of our competitors



#### Shower Door Friendly

- Ella's showers are fabricated to allow the options of using a curtain or shower door
- At the base, square corners above the low threshold support framed or frameless shower door installation



#### Availability

- Ella's showers are manufactured, inspected & shipped directly from the factory within 5-7 business days
- Rush orders are available upon request (white only)
- No order is too big or too small



#### Contractor Friendly

- Ella's One-Piece showers are preassembled at the factory and require no hardware installation on jobsite
- Compact and durable packaging for easy handling on the jobsite
- Shipped in heavy duty crating to protect the product in transit

