

artos[®]

F907-11

INSTALLATION GUIDE

8" shower head, wall
mount, angled arm
round +square

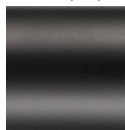
BRUSHED NICKEL(BN)



CHROME(CH)



BLACK(BK)



artos[®]

F907-11

8" shower head, wall
mount, angled arm
round +square

OPERATING SPECIFICATIONS



FEATURES

Solid Brass

OPERATING PRESSURE

Minimum: 15 psi

Maximum: 75 psi

Above 90psi it may be necessary to install a pressure reducer

OPERATING TEMPERATURE

Maximum: 176°

FLOW RATE

1.8 USGPM

APPROVALS

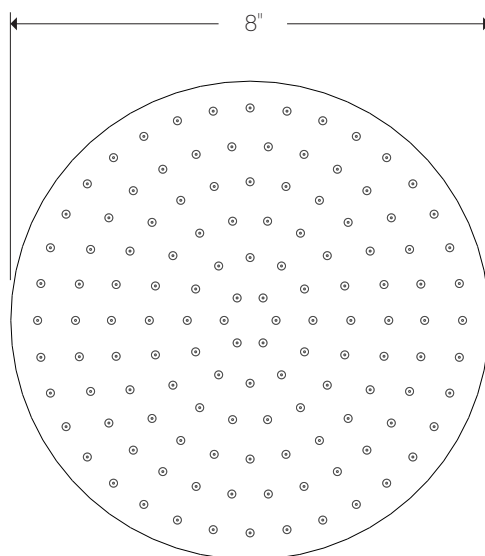
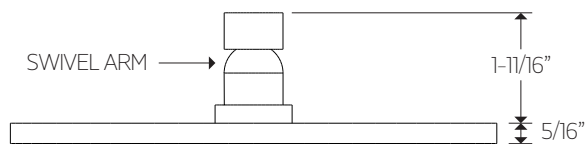
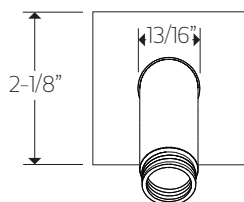
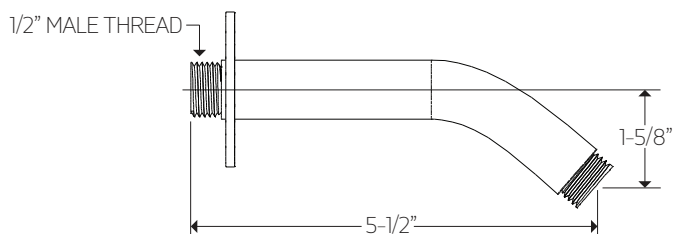


artos[®]

F907-11

PRODUCT DIMENSIONS

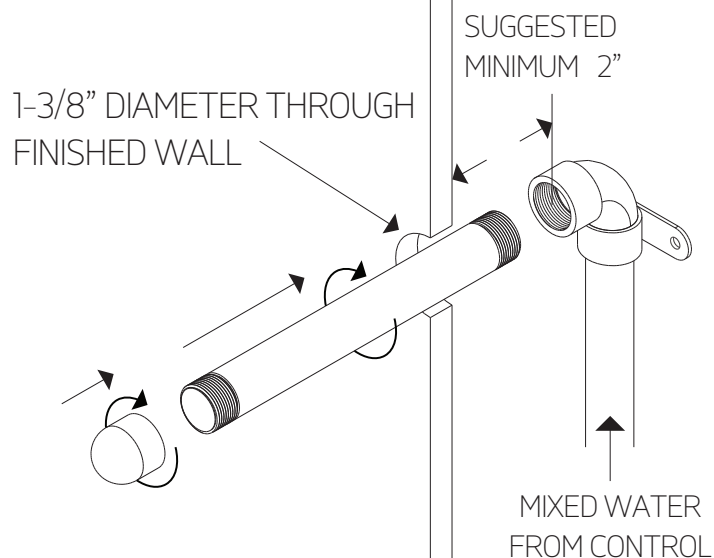
8" shower head, wall
mount, angled arm
round +square



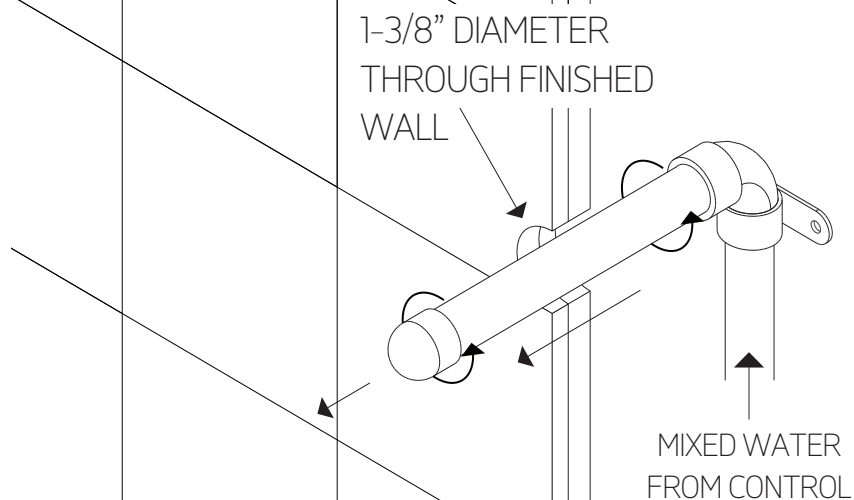
F907-11

8" shower head, wall
mount, angled arm
round +square

STEP 1

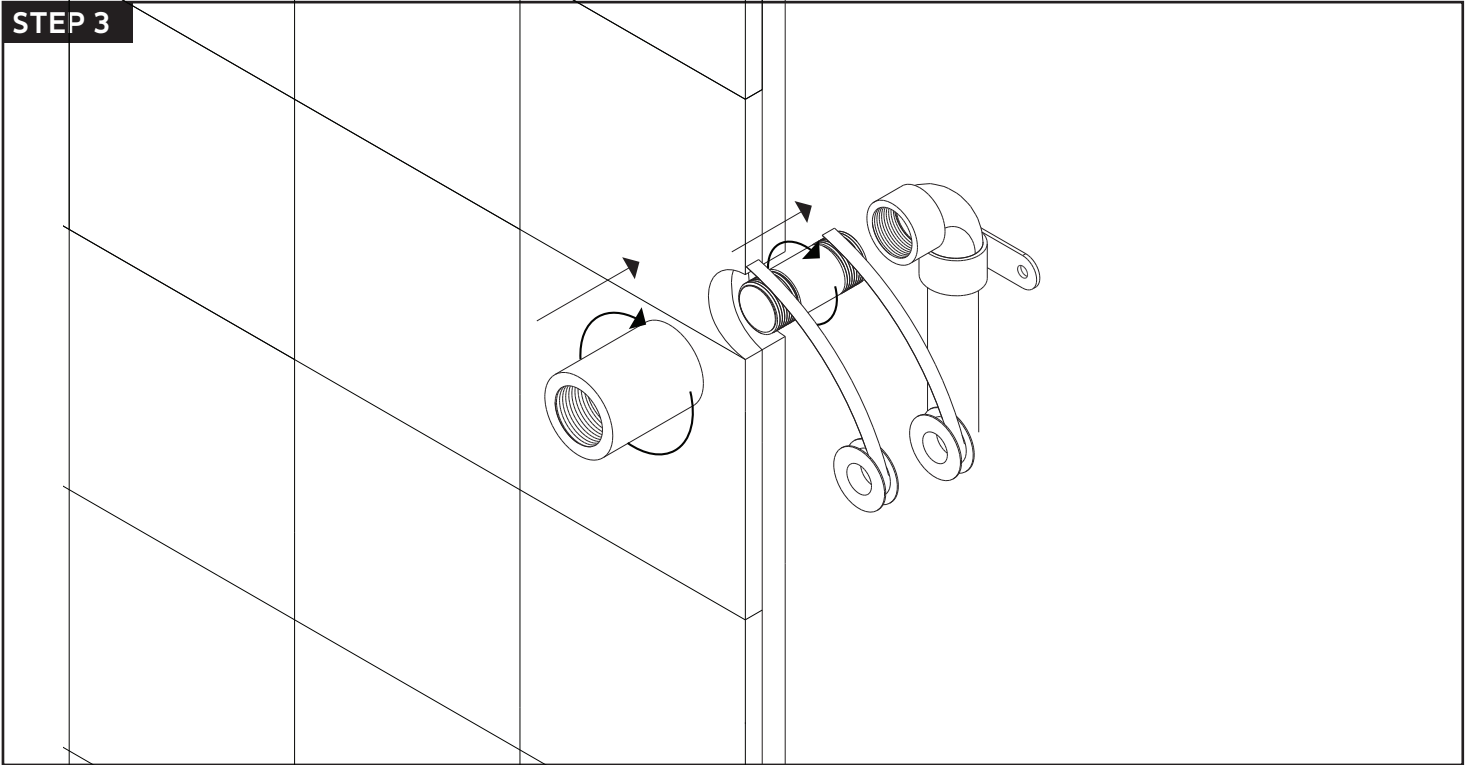


STEP 2

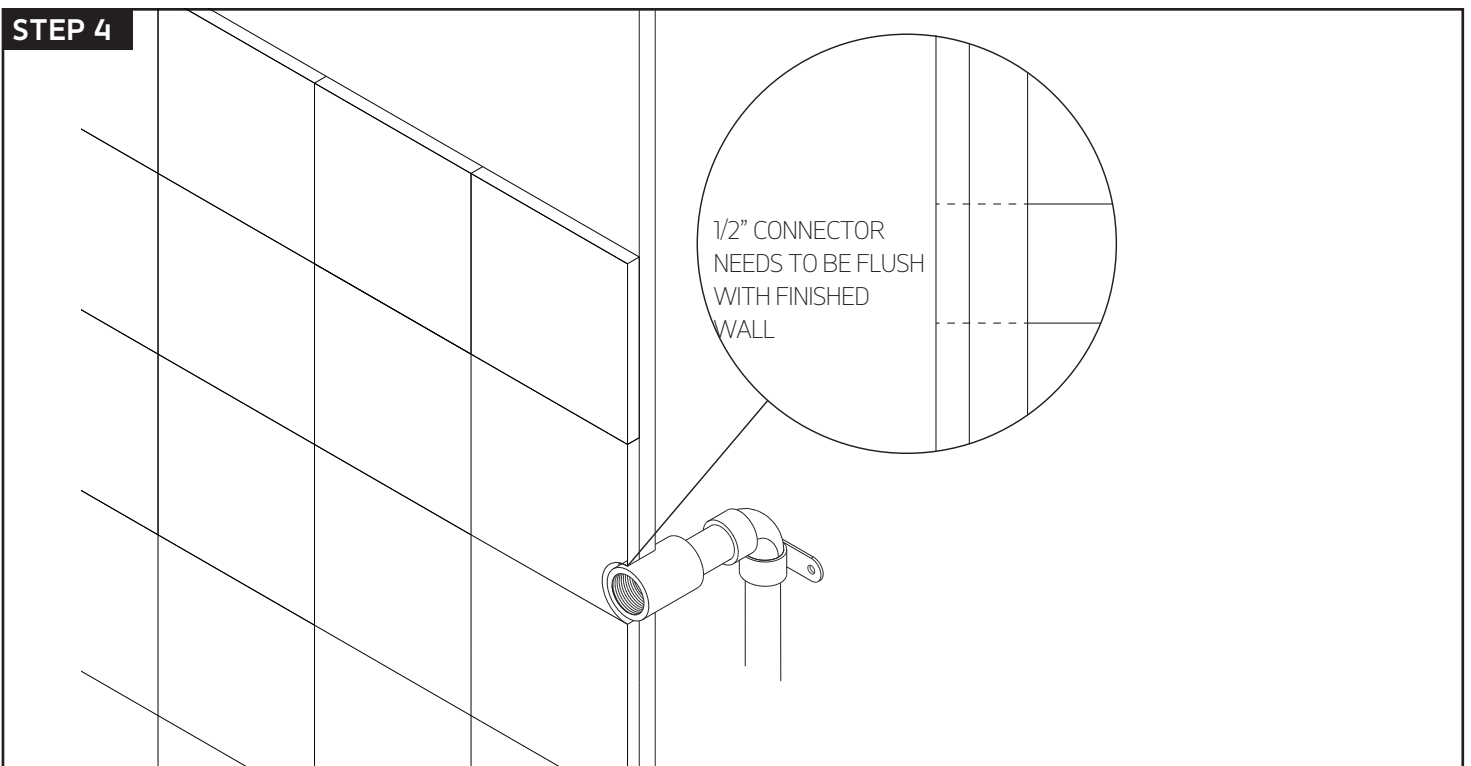


INSTALLATION STEPS

STEP 3



STEP 4



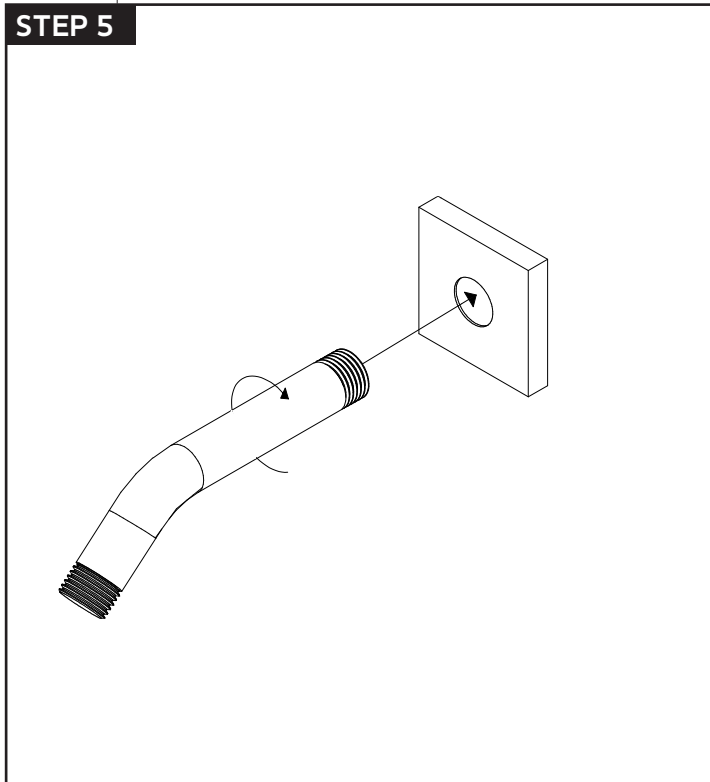
artos[®]

F907-11

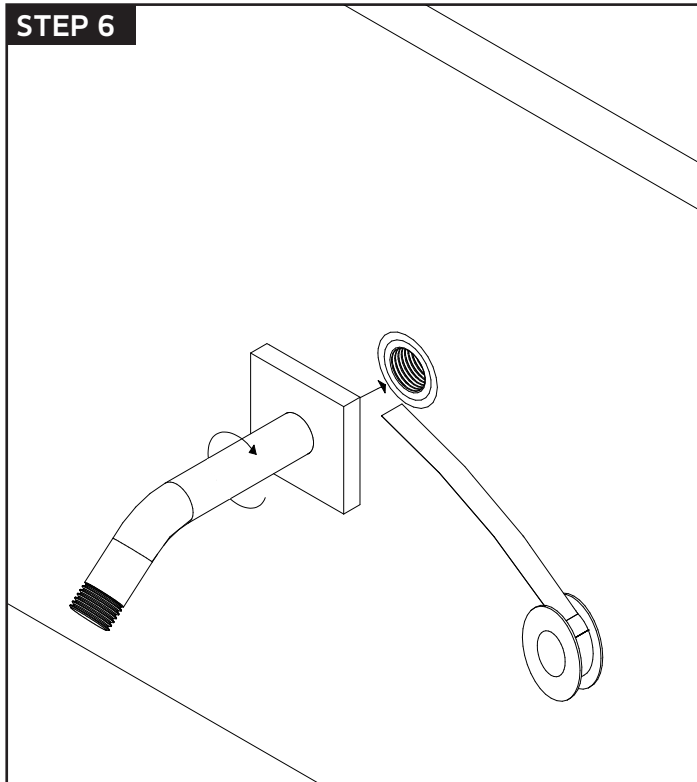
INSTALLATION STEPS

8" shower head, wall
mount, angled arm
round + square

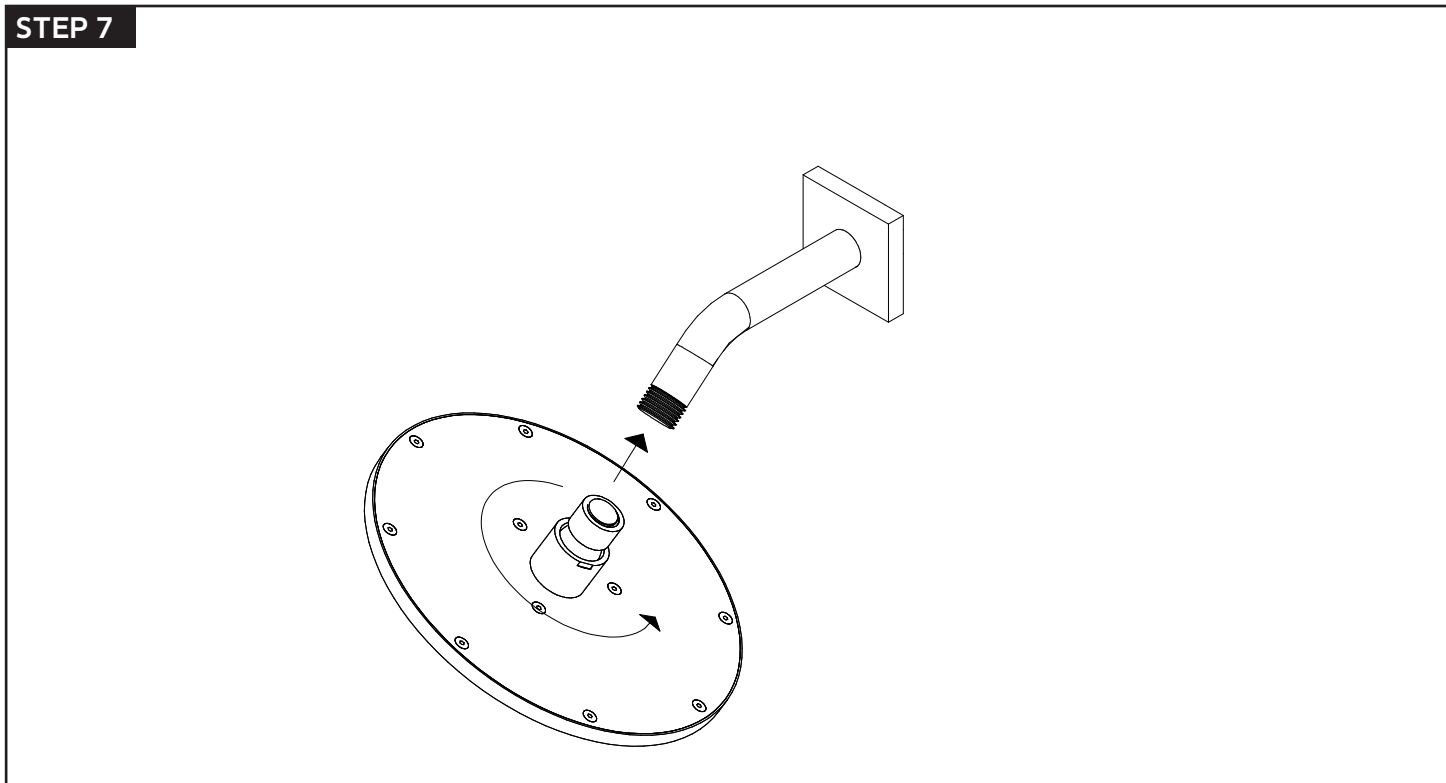
STEP 5



STEP 6



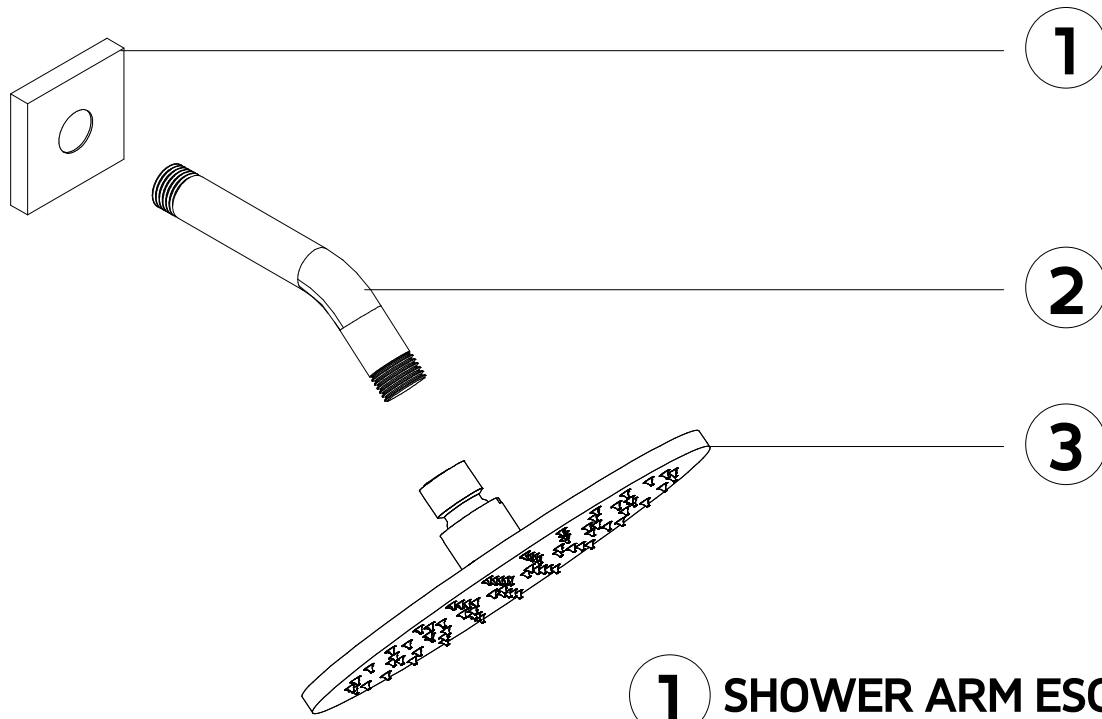
STEP 7



F907-11

PARTS BREAKDOWN

8" shower head, wall
mount, angled arm
round +square



- 1 SHOWER ARM ESCUTCHEON
- 2 SHOWER ARM
- 3 SHOWER HEAD