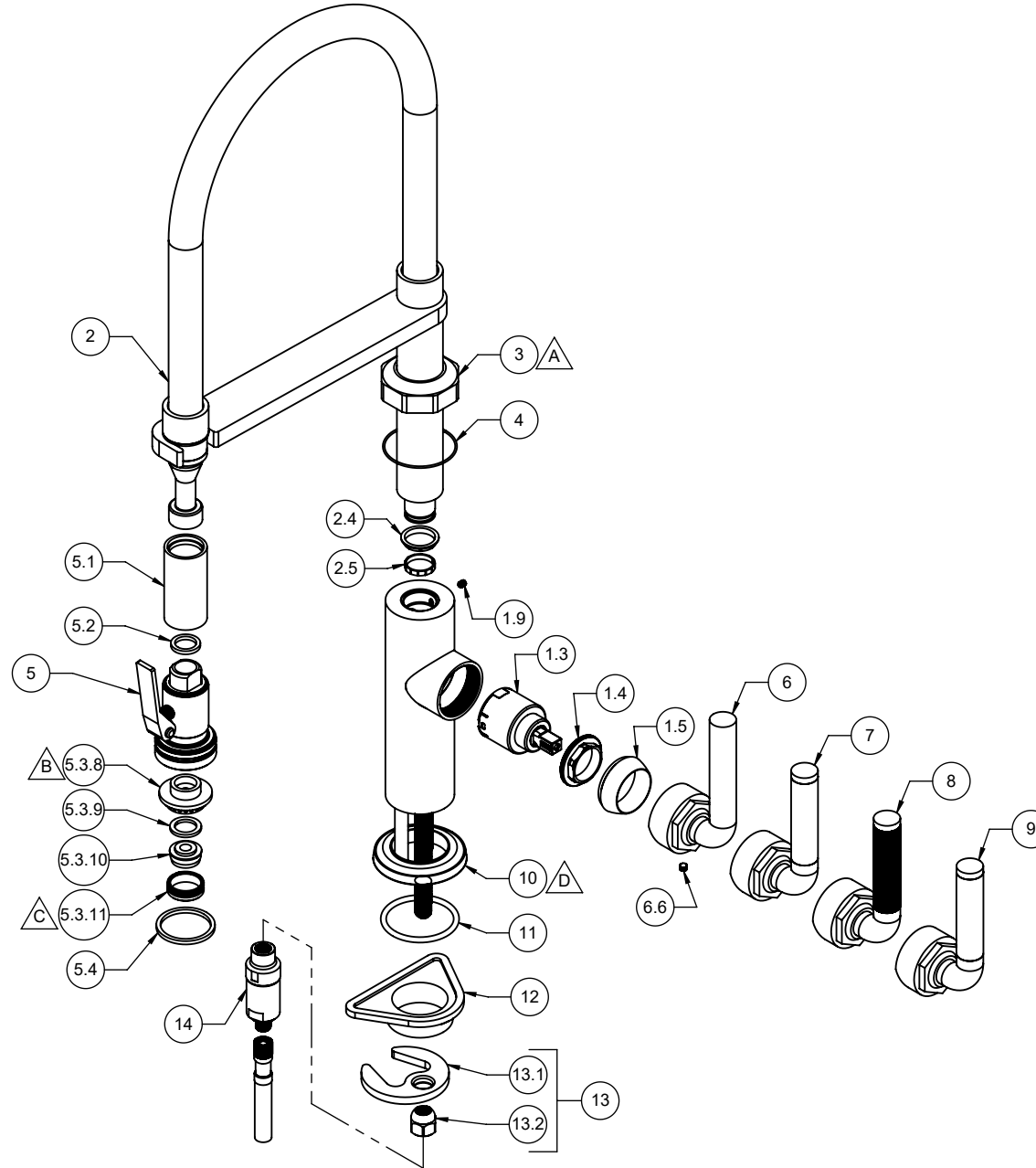


**K30-150SQ-SL  
K30-150SQ-KL  
K30-150SQ-FL  
K30-150SQ-TL**

- △ REQUIRES ITEM 4
- △ REQUIRES ITEM 20
- △ REQUIRES ITEM 19
- △ REQUIRES ITEM 11



**K30-150SQ-SL**  
**K30-150SQ-KL**  
**K30-150SQ-FL**  
**K30-150SQ-TL**

To order spare parts add and/or replace as stated below:

**SPD-** prefix added to part number(s)  
**-ZZ** replaced with finish code (see finish table)  
**-WW** replaced with **-90** (light finish) or **-96** (dark finish)

Ex: **SPD-7-100362-PC** or **SPD-86030-96**

| ITEM           | PART NO.  | DESCRIPTION  | QTY.                     |   |
|----------------|-----------|--|--------------------------|---|
| 10             | 10781-ZZ  | BASE RING, INDUSTRIAL KIT                                  | 1                        |   |
| 11             | 87139-80  | O-RING Ø44.04 X 3.53 (-224) BUNA-N A70                     | 1                        |   |
| 12             | 880325-81 | SPACER, SINGLE HOLE MOUNTING                               | 1                        |   |
| 13             | 6-200246  | KIT, KITCHEN/H2O DISP MNT HDW<br><i>(incl. 13.1, 13.2)</i> | 1                        |   |
| 13.1           | 880309-98 | MOUNTING BRACKET, SINGLE HOLE CRESCENT                     | 1                        |   |
| 13.2           | 10552-98  | NUT, HEX W/ DOME 7/16-24                                   | 1                        |   |
| 14             | 6-200262  | KIT, KITCHEN FAUCET CHECKVALVE - 1.85 GPM FLOW             | 1                        |   |
| 19             | 880567-81 | TOOL, SQUEEZE SPRAYER AERATOR                              | 1                        |   |
| for ITEM 5.3.8 | 20        | 880333-91  | KEY, ALLEN 7.0MM, BLACK  | 1 |
| for ITEM 1.9   | 21        | 882042-99  | KEY, ALLEN, 5/64", BLACK | 1 |
| for ITEM 6.6   | 22        | 882043-99  | KEY, ALLEN, 3/32", BLACK | 1 |

| ITEM          | PART NO.    | DESCRIPTION  | QTY.   |   |
|---------------|-------------|--|--|---|
| 1.3           | 880297-99   | CART 35MM, SNGL LVR (COLD TO HOT ROTATION)   | 1  |   |
| 1.4           | 10564-98    | NUT, 35MM CART KIT PACKING   | 1  |   |
| 1.5           | 10565-ZZ    | BONNET, STD KIT  | 1  |   |
| 1.9           | 86031-WW    | SETSCREW 8-32 X 3/16 SCKT HD CUP PT SS   | 1  |   |
| 2             | 7-100345-ZZ | ASM, SPRING KIT ARM<br><i>(incl. 2.4, 2.5)</i>   | 1  |   |
| 2.4           | 10558-81    | BUSHING, KIT SPT ADPTR   | 3  |   |
| 2.5           | 10557-81    | FRICITION RING, KIT SPT ADPTR  | 1  |   |
| 3             | 10783-ZZ    | TRIM, OCTAGON KIT BODY   | 1  |   |
| 4             | 87338-80    | O-RING Ø46.00 X 1.20 (NA) BUNA-N A70   | 1  |   |
| 5             | 7-100513-ZZ | SPRAY HEAD, Ø28MM SQUEEZE CULINARY PULL DN<br><i>(incl. 5.1, 5.2, 5.3.8, 5.3.9, 5.3.10, 5.3.11, 5.4)</i> | 1  |   |
| 5.1           | 10618-ZZ    | SLEEVE, KIT CONT SPRAYER   | 1  |   |
| 5.2           | 87156-80    | WSHR Ø14.20 X Ø19.20 X 2.50MM BUNA-N (NSF-61-12)   | 1  |   |
| 5.3.8         | 11079-81    | JET PAD, SQUEEZE SPRAYER   | 1  |   |
| 5.3.9         | 87302-80    | WSHR, Ø14.50 X Ø20.50 X 2.0 EPDM A70 (WRAS)  | 1  |   |
| 5.3.10        | 880499-81   | INSERT, FULL FLOW, AERATED M24 FLAT  | 1  |   |
| 5.3.11        | 11080-ZZ    | SHELL, SQUEEZE SPRAYER AERATOR   | 1  |   |
| 5.4           | 87287-80    | O-RING Ø32.99 X 2.62 (-125) BUNA-N A70 SQUARE  | 1  |   |
| for SL Series | 6           | 7-100279-ZZ  | ASM, INDUSTRIAL KIT LEVER - SMOOTH<br><i>(incl. 6.6)</i>       | 1 |
| for FL Series | 6.6         | 86047-90   | SETSCREW 10-24 X 3/16 SCKT HD CONE PT SS                       | 1 |
| for FL Series | 7           | 7-100301-ZZ  | ASM, INDUSTRIAL KIT LEVER - CARBON FIBER<br><i>(incl. 6.6)</i> | 1 |
| for KL Series | 8           | 7-100300-ZZ  | ASM, INDUSTRIAL KIT LEVER - KNURL<br><i>(incl. 6.6)</i>        | 1 |
| for TL Series | 9           | 7-100568-ZZ  | ASM, INDUSTRIAL KIT LEVER - TEAK<br><i>(incl. 6.6)</i>         | 1 |