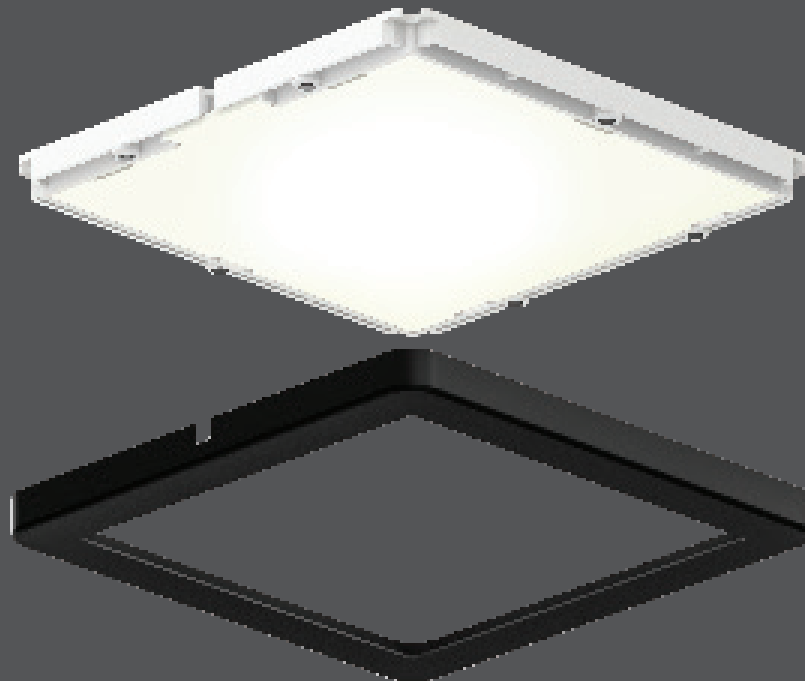


Ultra-slim puck

Thanks to its 1/4" profile, our 12V ultra-slim LED puck can be integrated onto any surface. Available as a single unit or as a kit of 3, in round or square and 3000K or 4000K. The choice is yours!



Model	Size	Watts	Delivered lumens	LED lumens	CRI	Color °T	Voltage
4006	Ø3.875"	3.6 W	250 lm	300 lm	90	3000 K	12 V
4006-4K	Ø3.875"	3.6 W	250 lm	300 lm	90	4000 K	12 V
4006SQ	3.875"	3.6 W	250 lm	300 lm	90	3000 K	12 V
4006SQ-4K	3.875"	3.6 W	250 lm	300 lm	90	4000 K	12 V
K4006	3 x Ø3.875"	3.6 W*	250 lm*	300 lm*	90	3000 K	12 V
K4006SQ	3 x 3.875"	3.6 W*	250 lm*	300 lm*	90	3000 K	12 V

*Per fixture

Specifications

12V DC LED driver required (4006/4006SQ)
 Over 50,000 hours of service life
 12" input lead with quick connector
 24" interconnection harness included
 Warm white light output
 Superior LED performance and lifespan
 Smooth 360° wide spread
 Minimal heat emission
 Heat sink and thermal protection
 JA8 Certified
 Refer to website for dimmer compatibility
 5-year warranty

Note

Plug-in or hard-wired power supply required for installation when purchasing the single unit (4006). Sold separately.

Other Color °T and Finishes available, but may require MOQ's and longer lead times. Please contact your DALs representative for more information.

Power supplies: plug-in

ETR-LED10WPI
 12VDC/10W class 2 LED driver
ETR-LED24WPI
 12VDC/24W class 2 LED driver

Power supplies: hard-wired

BT06DIMLED-IC
 6W dimmable LED hardwire driver
BT12DIMLED-IC
 12W dimmable LED hardwire driver
BT24DIMLED-IC
 24W dimmable LED hardwire driver
BT36DIMLED
 36W dimmable LED hardwire driver
BT48DIMLED
 48W dimmable LED hardwire driver

Finish

● **BK** Black
 ● **SN** Satin Nickel
 ○ **WH** White

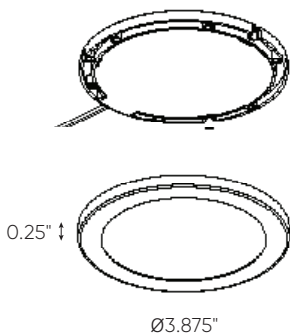
Accessories

4000E-24
 24" extension cord
4000E-60
 60" extension cord
4000HRNS-24
 24" interconnection harness

Order example

4006-SN
 4006 round single puck with 250 lumens at 3000K in a satin nickel finish

4006



4006SQ

