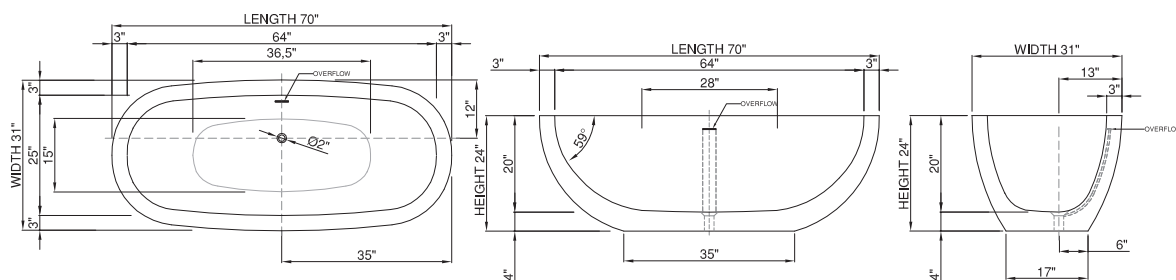




wide-edge



Price: \$7 990.00  
 Size (l) x (w) x (h): 70.0" x 31.0" x 20.0"  
 Waste to floor: 3.0"  
 Water capacity: 56.0 GAL  
 Overflow: Internal overflow  
 Material: DADOquartz®  
 Finish: Matte / Polished

Maximum water level: 18.0"  
 Base dimensions: 35.0" x 17.0"  
 Edge width: 3.0"  
 Waste diameter: 2.0"  
 Weight: 198.0 LBS

#### Shipping information

Packing dimensions: 73.0" x 33.0" x 26.0"  
 Shipping mass: 309.0 LBS