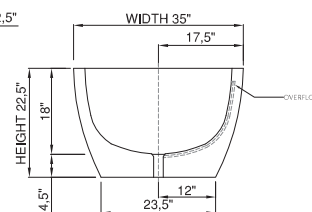
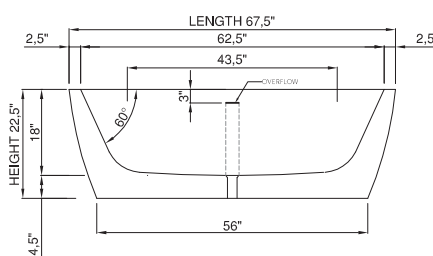
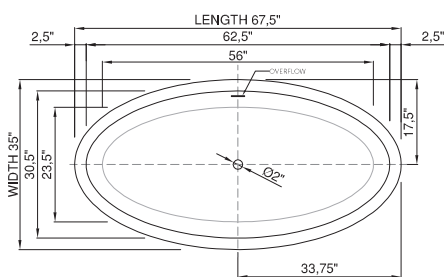




wide-edge



Price: \$7 990.00
 Size (l) x (w) x (h): 67.5" x 35.0" x 22.5"
 Waste to floor: 4.5"
 Water capacity: 52.0 GAL
 Overflow: Internal overflow
 Material: DADOquartz®
 Finish: Matte / Polished

Maximum water level: 17.0"
 Base dimensions: 56.0" x 23.5"
 Edge width: 2.5"
 Waste diameter: 2.0"
 Weight: 220.0 LBS

Shipping information

Packing dimensions: 71.0" x 37.0" x 27.0"
 Shipping mass: 331.0 LBS