

SHOWER  
Contemporary Pressure Balancing  
Shower Set (Rough & Trim)  
**G-7246-LM38S**

---

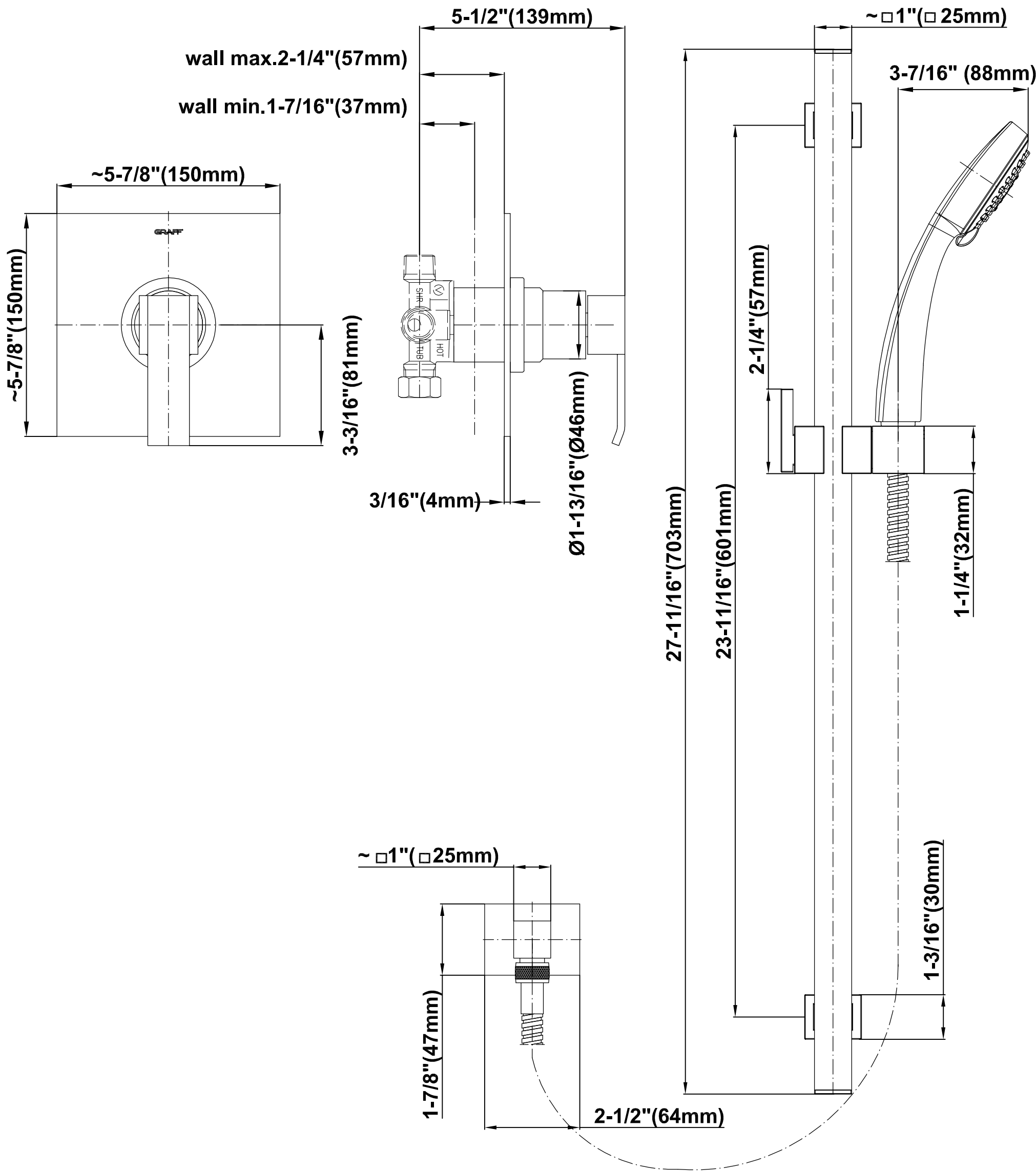
**GRAFF®**



## Information

- 1/2" Pressure Balancing Valve
- Includes Multi-function Handshower w/24" wall-mounted slide bar and 59" hose
- Flow Rates: handshower  $\leq 1.5$  max gpm
- Optional extension kit
- ADA
- CALGreen

# G-7246-LM38S



SHOWER  
Concealed Pressure Balancing  
Valve Rough  
**G-7005**

---

**GRAFF®**



## Information

- Anti-scald protection
- 1/2" universal inlets/outlets with male threads
- Built-in service stops
- For use with shower only configuration
- Supplied with protective plastic guard

## Finishes



Brushed  
Nickel



Polished  
Chrome



Steelnox®  
(Satin Nickel)

## G-7005

### Concealed Pressure Balancing Valve Rough



#### Product Features

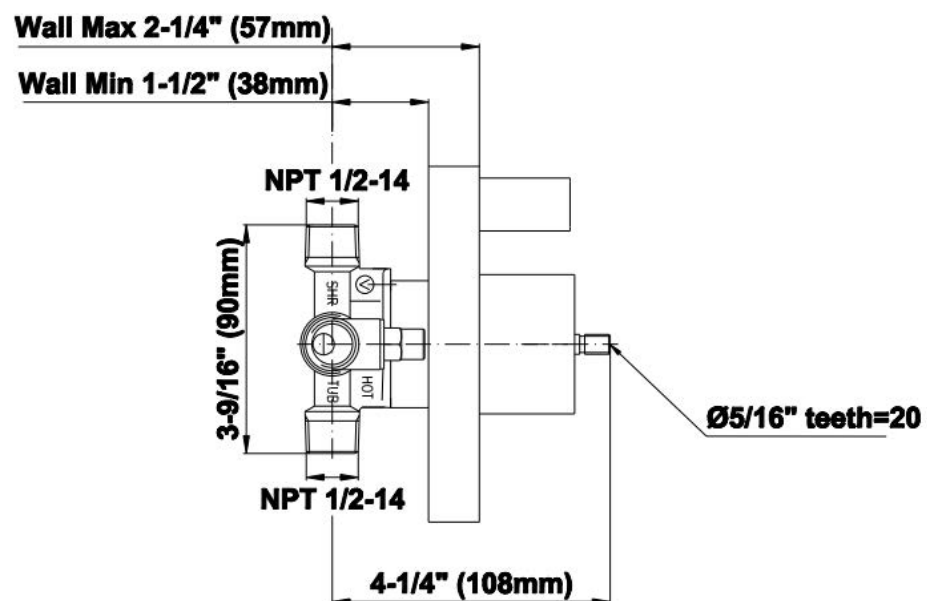
- Anti-scald protection
- 1/2" universal inlets/outlets with male threads
- Built-in service stops
- For use with shower only configuration
- Supplied with protective plastic guard

#### Warranty

- Limited lifetime warranty

For complete warranty information go to [www.graff-faucets.com/en/info/faqs](http://www.graff-faucets.com/en/info/faqs)

### Pressure Balance Rough G-7005



SHOWER  
Qubic SOLID Trim Plate w/Handle  
**G-7040-LM38S-T**

---

**GRAFF®**



## Information

- Single metal lever handle
- Decorative trim plate
- Use with G-7005 pressure balancing rough valve for shower-only configurations
- To complete package, you must order rough valve
- ADA

## Finishes



Brushed  
Nickel



Polished  
Chrome



Steelnox®  
(Satin Nickel)

SHOWER  
59" Shower Hose  
**G-8605**

---

**GRAFF®**



## Information

- Brass spiral flexible hose with conical nut

## Finishes



Brushed  
Nickel



Polished  
Chrome



Steelnix®  
(Satin Nickel)

## G-8605

### Shower Components 59" Shower Hose

# GRAFF®



#### Product Features

- Brass spiral flexible hose with conical nut

#### Warranty

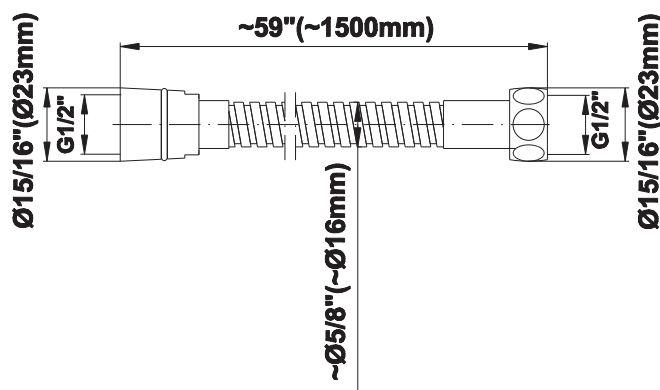
- Limited lifetime warranty

For complete warranty information go to [www.graff-designs.com/en-nam/warranty](http://www.graff-designs.com/en-nam/warranty)

#### Available Finishes

- Polished Chrome  
G-8605-PC
- Polished Nickel  
G-8605-PN
- Brushed Nickel  
G-8605-BNi
- Unfinished Brushed Brass\*  
G-8605-UBB\*
- Unfinished Brass\*  
G-8605-UB\*
- Matte Black\*  
G-8605-MBK\*
- Architectural Black\*  
G-8605-BK\*
- Architectural White\*  
G-8605-WT\*
- Olive Brass\*  
G-8605-OB\*
- Gunmetal\*  
G-8605-GM\*
- Vintage Brushed Brass\*  
G-8605-VBB\*
- Steelnox (Satin Nickel)  
G-8605-SN
- 24K Brushed Gold\*  
G-8605-BAU\*
- 24K Gold\*  
G-8605-AU\*
- Gunmetal Distressed\*  
G-8605-GMD\*

\* Special order finish- call for availability



SHOWER  
Contemporary Square Wall-  
Mounted Slide Bar  
**G-8631**

---

**GRAFF®**



## Information

- 27 11/16" tall wall-mounted slide bar
- Adjustable bracket fits all hoses with conical nut

## Finishes



Brushed  
Nickel



Polished  
Chrome

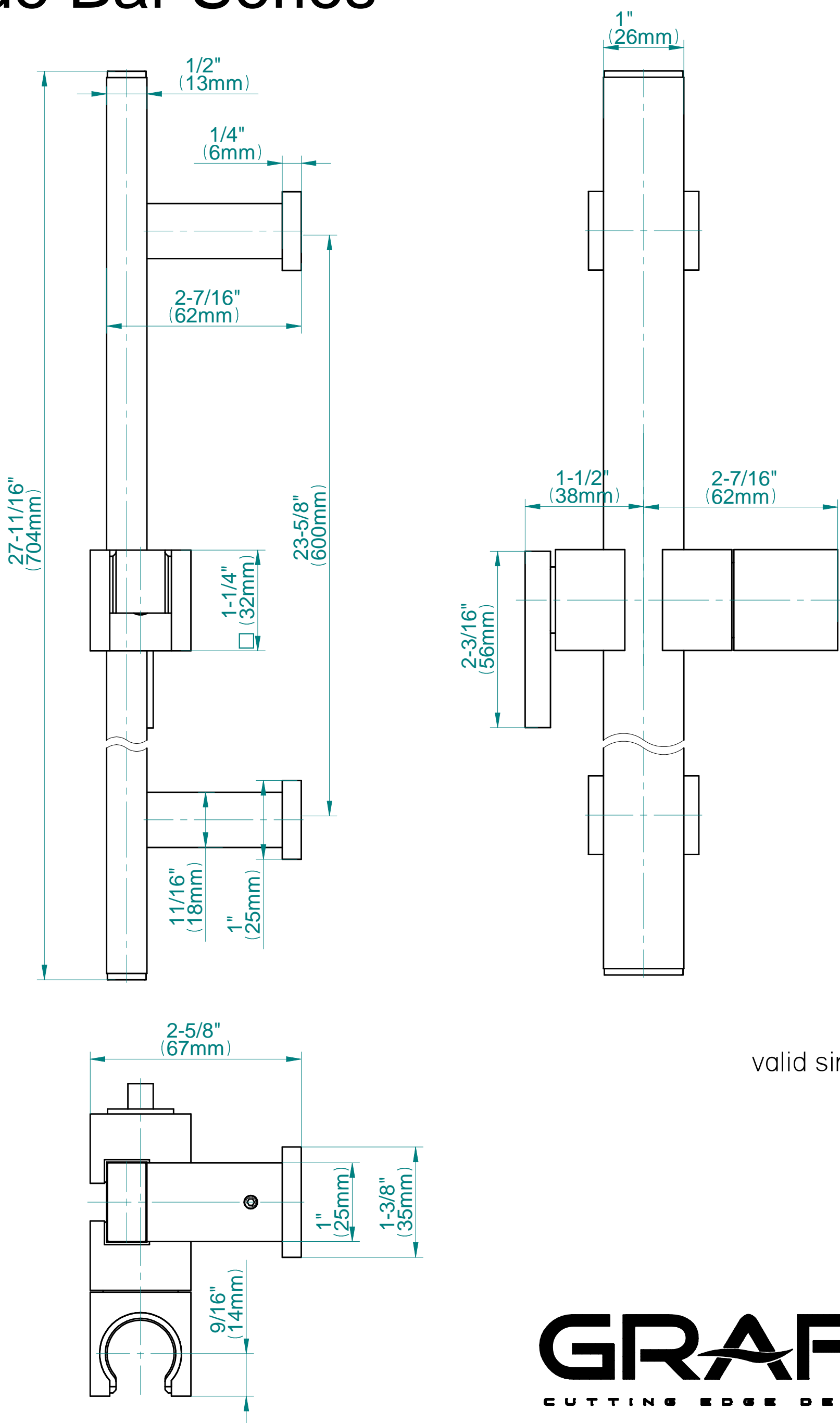


Steelnox®  
(Satin Nickel)



# G-8631

## Slide Bar Series



valid since 2014

SHOWER  
Contemporary Square Wall Supply  
Elbow  
**G-8633**

---

**GRAFF®**



## Information

- 1/2" NPT female thread inlet

## Finishes



Brushed  
Nickel



Polished  
Chrome



Steelnox®  
(Satin Nickel)

## G-8633

### Contemporary Square Wall Supply Elbow



#### Product Features

- 1/2" NPT female thread inlet

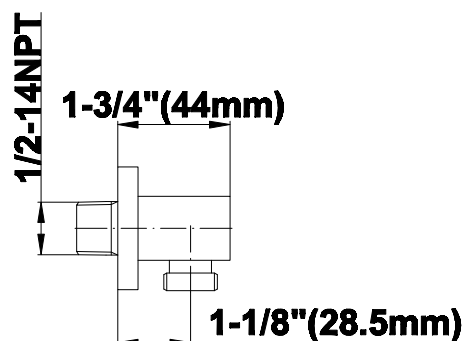
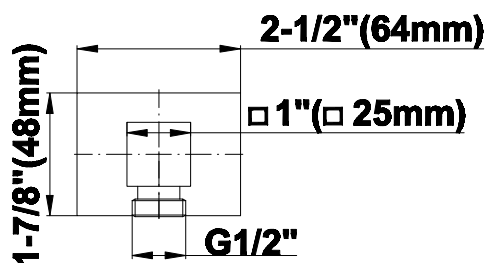
#### Available Finishes

- Polished Chrome  
G-8633-PC
- Steelnox<sup>®</sup>  
G-8633-SN
- Architectural Black w/Chrome  
Accents  
G-8633-PC/BK

#### Warranty

- Limited lifetime warranty

For complete warranty information go to  
<http://www.graff-faucets.com/en/info/faqs>



SHOWER  
Multi-function Handshower  
**G-8664**

---

**GRAFF®**



## Information

- 2 spray patterns: rain and invigorating body massage
- Switch between 2 spray patterns
- Shower hose not included
- Handshower flow rate  $\leq 1.5$  max gpm
- Includes internal backflow preventer
- CALGreen

## Finishes



Brushed  
Nickel



Polished  
Chrome



Steelnox®  
(Satin Nickel)

## G-8664

### Multifunction Handshower

**GRAFF**<sup>®</sup>  
CUTTING EDGE DESIGN



#### Product Features

- Switch between 2 spray patterns
- Shower hose not included
- Handshower flow rate  $\leq 1.5$  max gpm
- CALGreen compliant

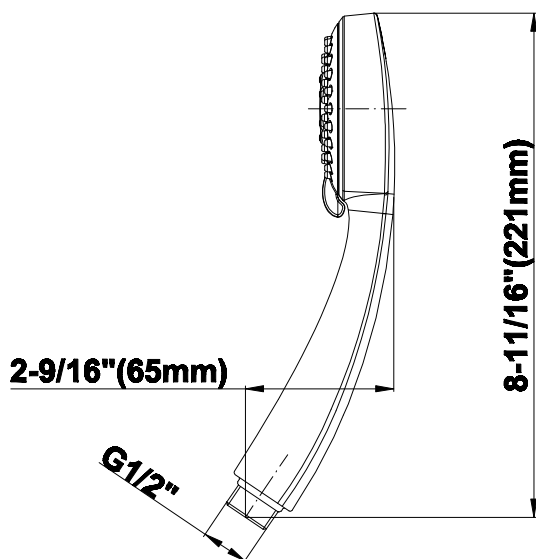
#### Available Finishes

- Polished Chrome G-8664-PC
- Steelnox<sup>®</sup> G-8664-SN

#### Warranty

- Limited lifetime warranty

For complete warranty information go to  
<http://www.graff-faucets.com/en/info/faqs>



**Ø3-5/15" (Ø84mm)**

