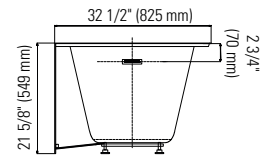
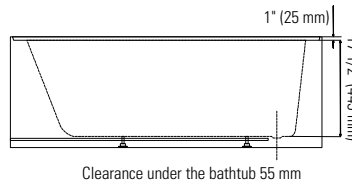
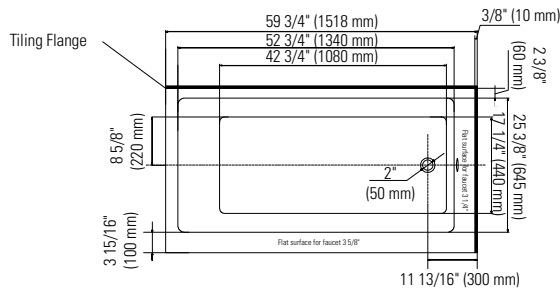


ZURICH 3260

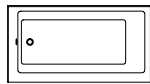
59 3/4" x 32 1/2" x 21 5/8"



PRODUCT DESCRIPTION:	
Adjustable feet Contemporary style Above-the-floor rough (AFR) Integrated linear overflow and drain kit included, chrome	
24-48hrs 5 days	
WATER CAPACITY:	IMMERSION:
240 L	14 1/16 po
BOX SIZE:	
61" x 33 7/16" x 22 7/16"	
NET WEIGHT:	GROSS WEIGHT:
40.3 kg	50 kg

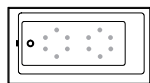


Clearance under the bathtub 55 mm



Bathtub only

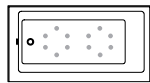
ZUR3260R2R
ZUR3260L2L



Mass-Air

ZUR3260R2RM
ZUR3260L2LM

Included: 12 injectors, 750W (1 1/2h.p.) Optima blower, with 300W heating element, 72" blower hose extension, and remote control.



Rouge-Air

ZUR3260R2RA
ZUR3260L2LA

Included: 12 micro-jets, 750W (1 1/2h.p.) Optima blower, with 300W heating element, 72" blower hose extension, and remote control.

GENERAL OPTIONS

Overflow and waste included: Chrome

Acrylic Colour: White

Standard

Bathtub drain adapter (picture below)

Gel black neck pillow

White, brushed nickel or black overflow and drain kit

MASS-AIR / ROUGE-AIR OPTIONS

Mass-Air Jet finish: White/Chrome

Standard

Others: Chrome/Chrome

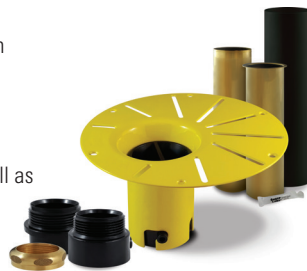
96" blower hose extension

A blower hose extension is required when the blower is located more than 4' from the bathtub.

BATHTUB DRAIN ADAPTER

123Connect is a freestanding bathtub rough-in (install before tile).

- Quick, easy and clean installation.
- No access panel required.
- Allows for an installation as close to the wall as possible.



LINEAR OVERFLOW



White

Brushed nickel

Chrome

Black



CONFORMITY ATTESTATION
Bathtub Standards
cUPC
Hydromassage Standard
CAN / CSA.B45.10 / CSA.C22.2 / UL-1795



ECORESPONSABLE Certification
First manufacturer of bathroom products in North America to be certified ecoresponsible



Produits Neptune
Rouge

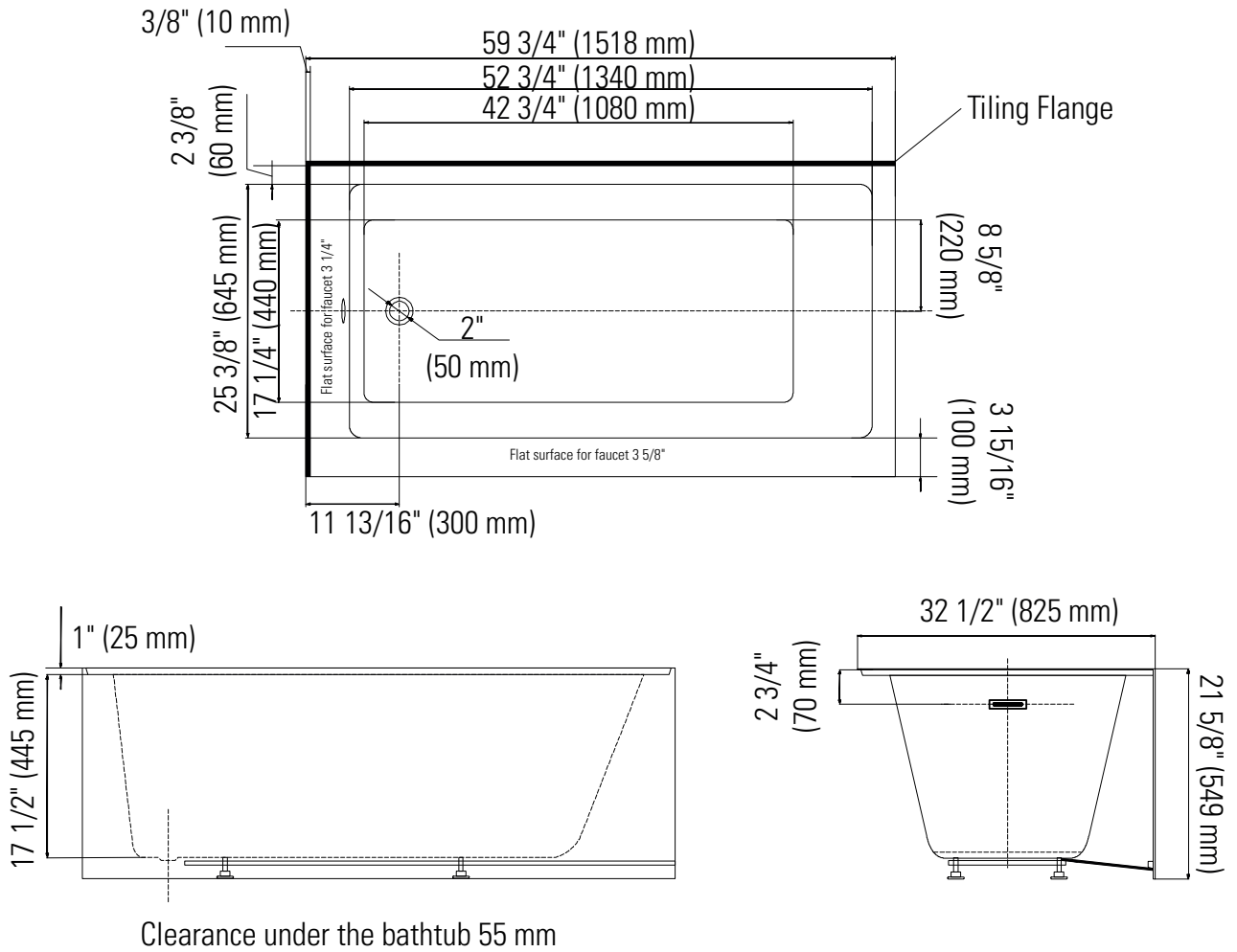
6835, Picard street, Saint-Hyacinthe (Québec) J2S 1H3
Phone: (450) 773-7058 - produitsneptune.com



Produits Neptune
Rouge

Zurich 3260 L2L

Bathtub



Ajustable feet

*All dimensions are approximate and subject to change without notice
Please refer to the installation guide before beginning the installation