

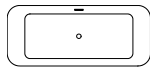
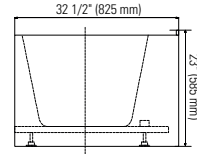
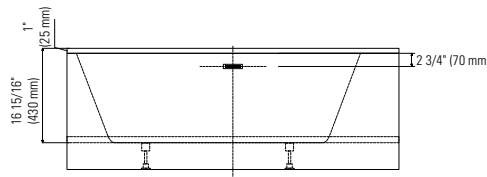
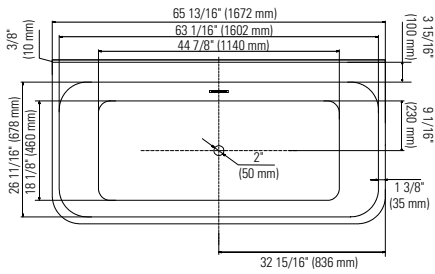
BELGRADE F1 3266

65 13/16" x 26 11/16" x 23"



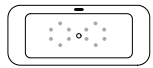
PRODUCT DESCRIPTION:	
Adjustable feet Contemporary style Above-the-floor rough (AFR) Integrated linear overflow and drain kit included, chrome	
WATER CAPACITY:	IMMERSION:
270 L	13 7/8 po
BOX SIZE:	
67 9/16" x 33 7/16" x 4 3/16"	
NET WEIGHT:	GROSS WEIGHT:
54.5 kg	65 kg

24-48hrs
5 days



Bathtub only

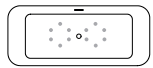
BEL3266F1



Mass-Air

BEL3266F1M

Included: 12 injectors, 750W (1 1/2h.p.) Optima blower, with 300W heating element, 72" blower hose extension, and remote control.



Rouge-Air

BEL3266F1A

Included: 12 micro-jets, 750W (1 1/2h.p.) Optima blower, with 300W heating element, 72" blower hose extension, and remote control.

GENERAL OPTIONS

Overflow and waste included: Chrome

Acrylic Colour: White

Standard

Bathtub drain adapter (picture below)

Gel black neck pillow

White, brushed nickel or black overflow and drain kit

MASS-AIR / ROUGE-AIR OPTIONS

Mass-Air Jet finish: White/Chrome

Standard

Others: Chrome/Chrome

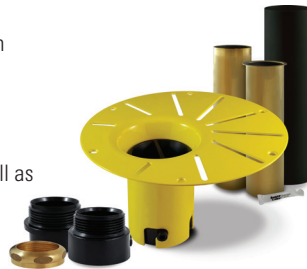
96" blower hose extension

A blower hose extension is required when the blower is located more than 4' from the bathtub.

BATHTUB DRAIN ADAPTER

123Connect is a freestanding bathtub rough-in (install before tile).

- Quick, easy and clean installation.
- No access panel required.
- Allows for an installation as close to the wall as possible.



LINEAR OVERFLOW



White



Brushed nickel



Chrome



Black



CONFORMITY ATTESTATION
Bathtub Standards
cUPC
Hydromassage Standard
CAN / CSA.B45.10 / CSA.C22.2 / UL-1795



ECORESPONSABLE Certification
First manufacturer of bathroom products in North America to be certified ecoresponsible




Produits Neptune
Rouge

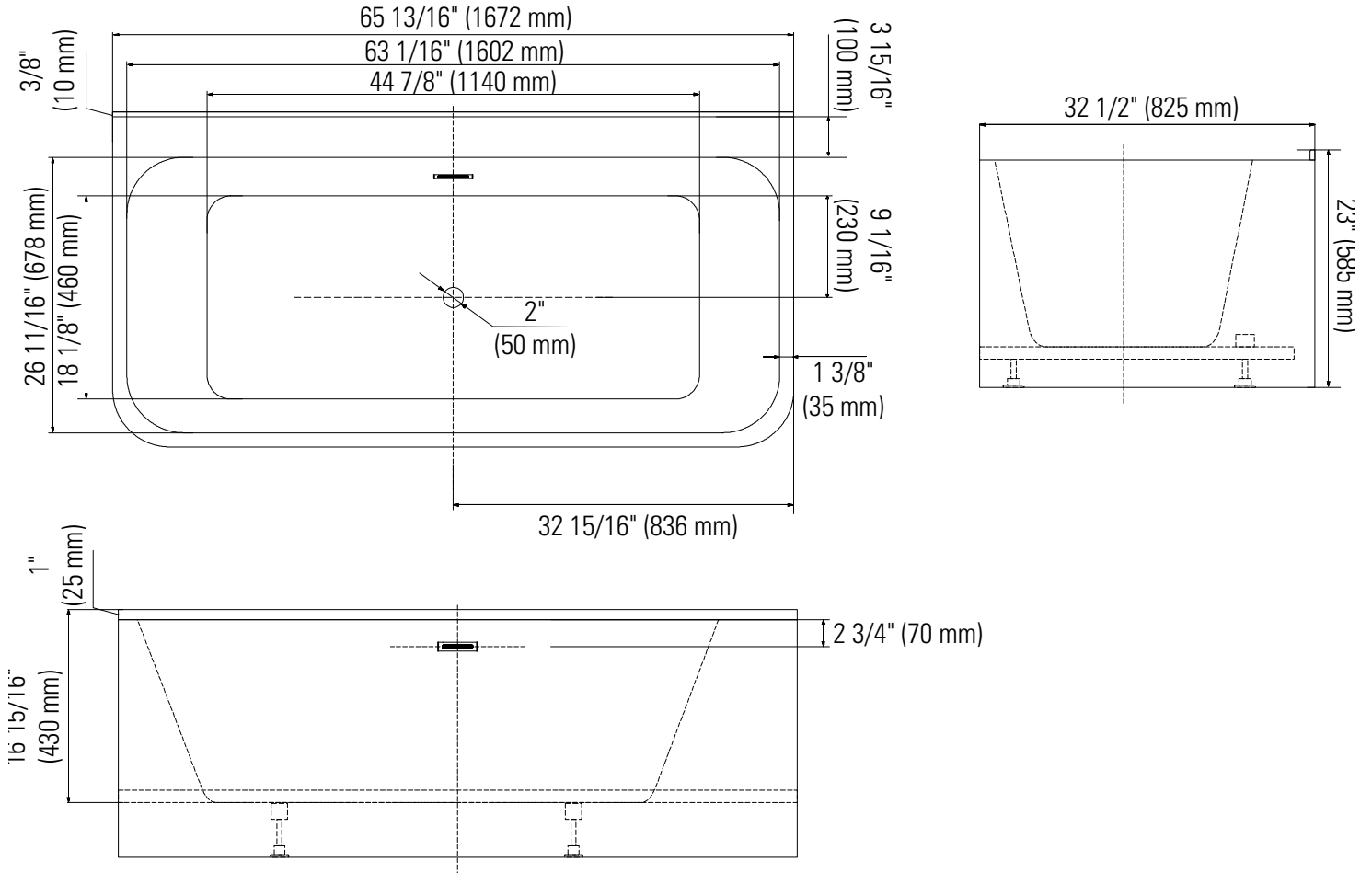
6835, Picard street, Saint-Hyacinthe (Québec) J2S 1H3
Phone: (450) 773-7058 - produitsneptune.com



Produits Neptune
Rouge

Belgrade 3266 F1

Bathtub



Ajustable feet

Above-the-floor rough (AFR)

*All dimensions are approximate and subject to change without notice
Please refer to the installation guide before beginning the installation