

# BADEN F1 3266

66 3/4" x 31 1/2" x 23"



## PRODUCT DESCRIPTION:

Adjustable feet  
Contemporary style  
Above-the-floor rough (AFR)  
Integrated linear overflow and drain kit included, chrome

24-48hrs  
5 days

## WATER CAPACITY:

277 L

## IMMERSION:

15 1/8 po

## BOX SIZE:

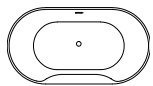
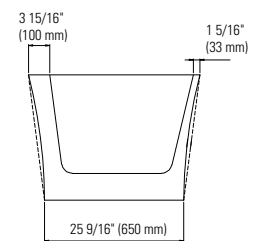
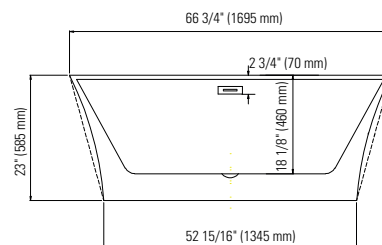
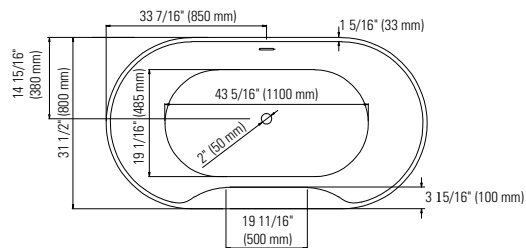
68 1/2" x 33 1/16" x 23 13/16"

## NET WEIGHT:

47.8 kg

## GROSS WEIGHT:

57.7 kg



Bathtub only

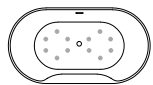
BAD3266F1



Mass-Air

BAD3266F1M

Included: 12 injectors, 750W (1 1/2h.p.) Optima blower, with 300W heating element, 72" blower hose extension, and remote control.



Rouge-Air

BAD3266F1A

Included: 12 micro-jets, 750W (1 1/2h.p.) Optima blower, with 300W heating element, 72" blower hose extension, and remote control.

## GENERAL OPTIONS

Overflow and waste included: Chrome

Acrylic Colour: White

Standard

Bathtub drain adapter (picture below)

Gel black neck pillow

White, brushed nickel or black overflow and drain kit

## MASS-AIR / ROUGE-AIR OPTIONS

Mass-Air Jet finish: White/Chrome

Standard

Others: Chrome/Chrome

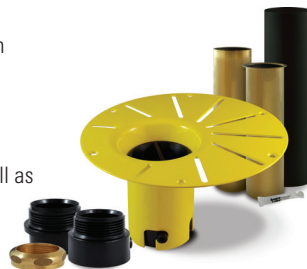
96" blower hose extension

A blower hose extension is required when the blower is located more than 4' from the bathtub.

## BATHTUB DRAIN ADAPTER

123Connect is a freestanding bathtub rough-in (install before tile).

- Quick, easy and clean installation.
- No access panel required.
- Allows for an installation as close to the wall as possible.



## LINEAR OVERFLOW



White



Brushed nickel



Chrome



Black



CONFORMITY ATTESTATION  
Bathtub Standards  
cUPC  
Hydromassage Standard  
CAN / CSA.B45.10 / CSA.C22.2 / UL-1795



ECORESPONSABLE Certification  
First manufacturer of bathroom products in North America to be certified ecoresponsible



  
**Produits Neptune**  
**Rouge**

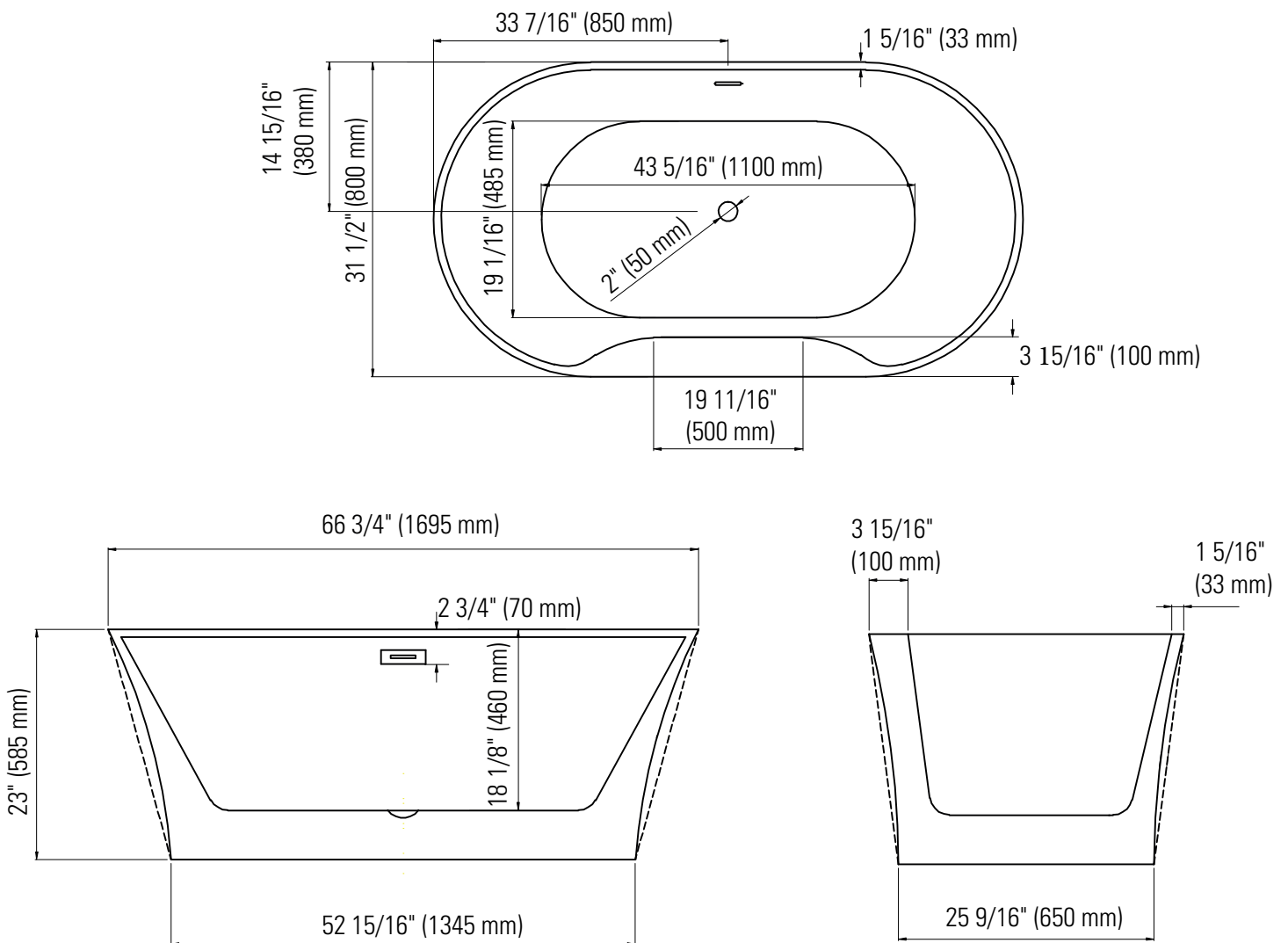
6835, Picard street, Saint-Hyacinthe (Québec) J2S 1H3  
Phone: (450) 773-7058 - produitsneptune.com



Produits Neptune  
Rouge

## Baden 3266 F1

Bathtub



Ajustable feet

Above-the-floor rough (AFR)

\*All dimensions are approximate and subject to change without notice  
Please refer to the installation guide before beginning the installation