

**ONYX  
56" ACRYLIC  
OVAL TUB**

Cat. No.  
ATOVN56FIG-XX



L: 55- $\frac{3}{8}$ "  
W: 29- $\frac{1}{2}$ "  
H: 26- $\frac{7}{8}$ "

Water depth: 20- $\frac{1}{4}$ " to top of tub  
Water depth 17- $\frac{1}{8}$ " to overflow  
Overflow slot length: 1- $\frac{3}{4}$ "  
Center drain to back of rim: 12- $\frac{3}{8}$ "  
Bottom of drain to floor: 5- $\frac{1}{8}$ "  
Bathing well to floor: 6- $\frac{1}{8}$ "

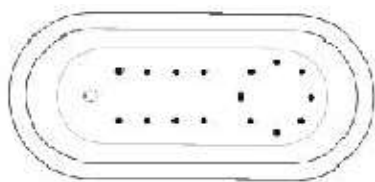
**The following is recommended for  
ATOVN56F tubs:**

- Faucets: part #4602,#4604 OR 7082
- Rigid, freestanding supplies: part #4502

Gallon Capacity 63  
Shipping Weight: 153 lbs.  
Empty Weight: 93 lbs.  
Filled Weight 619 lbs.



**For easier installation we  
recommend use of 5598-ITD  
Easy Install Rough In Kit**



(Air jet configuration if system is added,  
more info on page 2.)

**Features:**

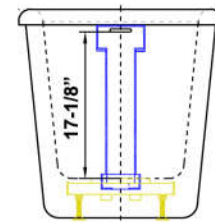
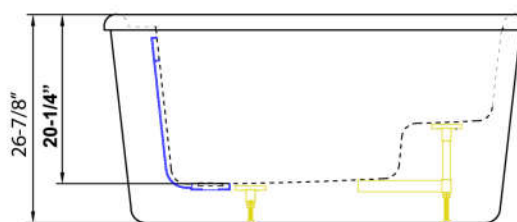
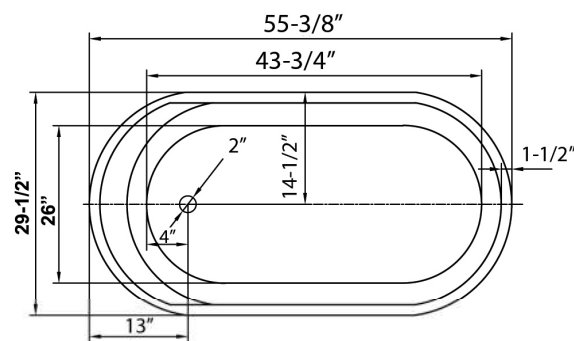
- Interior and exterior walls acrylic sheets
- Drain and overflow covers included (available in 6 finishes)
- Overflow slot with integrated drain
- Drain included
- Rim measurement: 1- $\frac{3}{4}$ "
- Includes built-in adjusters
- Integrated seat increases comfort level
- No faucet holes
- Angle slope of tub: 25°
- Tub is thoroughly inspected before shipment
- IAPMO Certified
- Option to add foam insulation between tub walls available
- **New:** Air jet system now available, more info on page 2



**Finishes:**

**CP** Polished Chrome  
**PB** Polished Brass  
**PN** Polished Nickel  
**BN** Brushed Nickel  
**ORB** Oil Rubbed Bronze  
**WT** White

**Custom Colors Available** (inside of tub is always white enamel):  
Painted bathtubs are considered "special order" and are not returnable  
\$160 Bisque or Black \$250 Designer Color



Dimensions of fixture are nominal and specifications subject to change without notice.

01/17/2020

P 847•244•1234

www.barclayproducts.com

# BATHTUB AIR JET KIT

Cat. No.  
AIR KIT 1, AIR KIT 2



- A** AIR JET - Bottom air jets for maximum bubble action.
- B** BLOWER - The heart of the massage system.
- C** MANIFOLD - Double back flow security prevention device.
- D** FLEXIBLE PVC HOISING - IAPMO certified.
- E** MAIN AIR INTAKE HOSE - High temperature and pressure resistant.

**Air Kit is installed in tub before shipment**

## Features:

- ▶ 750 Watt blower motor operates system
- ▶ 300 Watt air heater warms air
- ▶ System powered by 120V
- ▶ 16 brass air jets placed in bottom of tub
- ▶ Each air jet has 24 holes
- ▶ Air jet caps available in white (AIR KIT 1) or black (AIR KIT 2)
- ▶ Includes 1 1/4" x 3' main air hose plus 1 1/4" x 9' extension hose
- ▶ Automatic system purge after each use
- ▶ Automatic safety timer turns off system after 20 minutes
- ▶ Includes water tight remote control
- ▶ Compatible with most acrylic, copper and resin tubs with no feet
- ▶ Not available with cast iron tubs or tubs with feet

## INSIDE TUB VIEW - WILL VARY BY TUB DESIGN

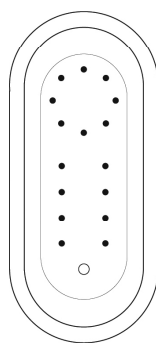


Air Jet

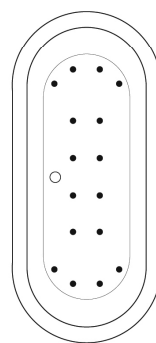


Remote

**Oval bathtub**  
Sample jet configuration

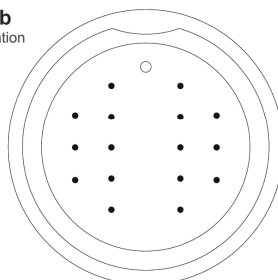


with end drain

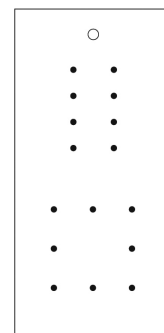


with center drain

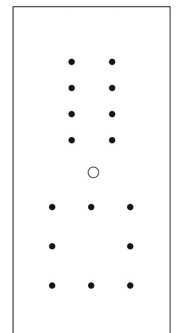
**Round bathtub**  
Sample jet configuration



**Rectangular bathtub**  
Sample jet configuration



with end drain



with center drain

These diagrams are general representations.  
Jet placement may vary dependent on tub shape

### Features:

(16) Maxi Air Jets



Elbows for air jets



Tees for air jets