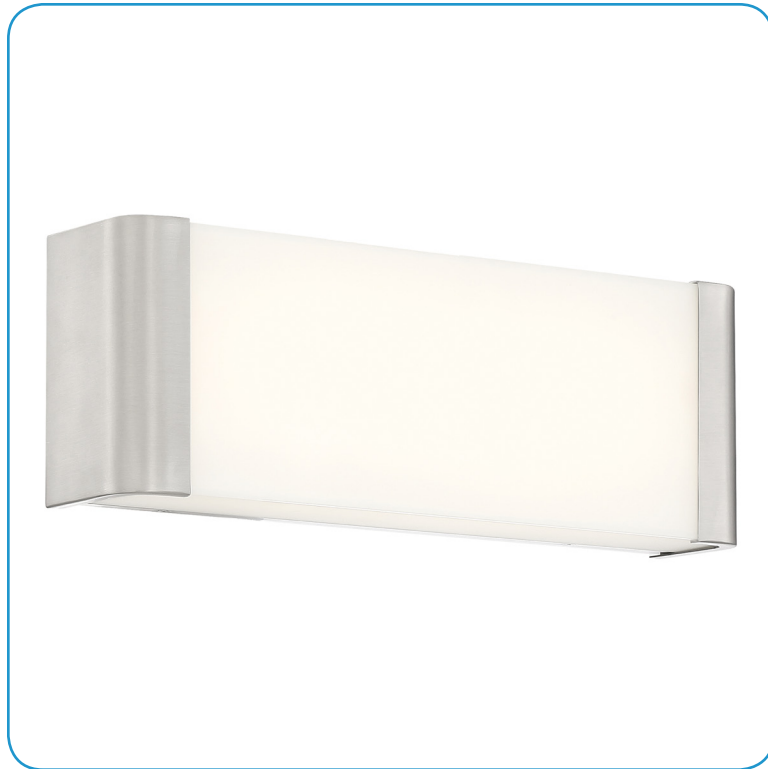


Model No :: **62503LEDD-BS/FST**
 Name :: **Origin**



Project Name :: _____
 Location :: _____
 Type :: _____
 Quantity :: _____
 Notes :: _____

Product Information

Product ID :: 62503
 UPC Code :: 641594229493
 Mounting Type :: Wall
 Finish :: Brushed Steel (BS)
 Diffuser :: Frosted (FST)
 Alt. Finishes :: N/A
 Alt. Diffusers :: N/A

Product Dimensions

| Fixture | Canopy |
|--------------------|----------------------------|
| Length :: N/A | Length :: N/A |
| Width :: 13.25" | Width :: 13.25" |
| Diameter :: N/A | Diameter :: N/A |
| Extension :: 2.75" | Height :: 4.625" |
| Height :: 4.625" | Overall Height :: N/A Max. |

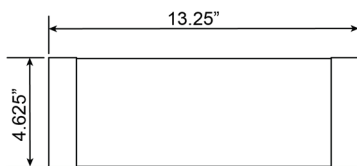


Technical Specifications

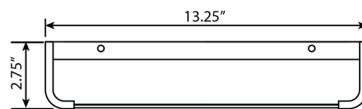
| Qualifications | Specifications | Photometrics | Recommended Dimmers |
|----------------------------|-------------------------------|-------------------------|--|
| Location Rating :: Damp | Frame Material :: Metal | CCT :: 3000 | (ELV) LUTRON Caseta PD - 6WCL; (ELV) LUTRON Maestro CL MACL-153M; (ELV) LUTRON Maestro MRF2-6CL; (TRIAC) LUTRON Diva DVCL-153P |
| Certification :: cULus | Diffuser Material:: Glass | CRI :: 90 | |
| IES File :: Yes | Voltage :: 120v | Wattage :: 16 W | |
| JA8 Compliant :: No | Lamping Type :: Dedicated LED | Nominal Lumens :: 1300 | |
| Title 20 Compliant :: N/A | Lamping Base :: SSL | Delivered Lumens :: 931 | |
| Energy Star :: No | Lamp Quantity :: 1 | | |
| ADA Compliant :: Yes | Lamp Wattage :: 16 W | | |
| Marine Grade :: No | Total Wattage :: 16 W | | |
| Emergency Lighting :: No | Lamps Included :: Yes | | |
| Warranty :: 5 Year Limited | J-Box Type :: Standard | | |

Custom Options :: N/A; Additional Items :: N/A

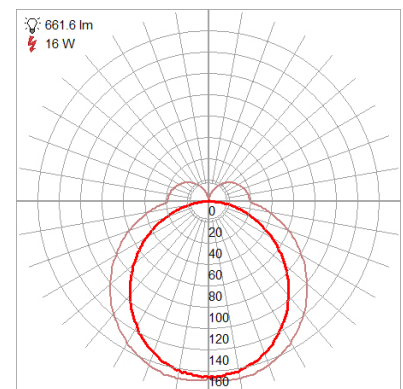
Line Drawing #1



Line Drawing #2



IES File



Toll Free 800-828-5483 or www.AccessLighting.com

14410 Myford Road, Irvine, CA 92606

The information provided is subject to change without notice. ©2018 Access Lighting Corporation. All Rights Reserved
 Rev. 201902 Filename:: 62503LEDD-BS_FST.pdf

