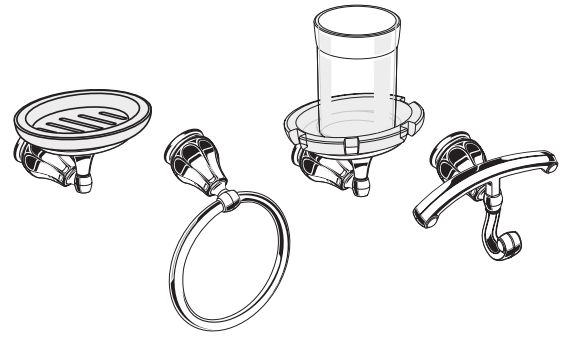


ACCESSORIES

TOWEL RING
SOAP DISH
TUMBLER WITH TOOTHBRUSH HOLDER
ROBE HOOK

| | |
|----------|------|
| 6028.190 | 6094 |
| 6028.150 | 6095 |
| 6028.160 | 6096 |
| 6028.210 | 6097 |



Certified to comply with ANSI A112.18.1

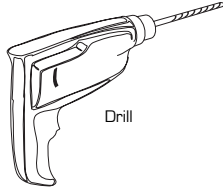
M968859 REV.1.1

*Thank you for selecting American-Standard...the benchmark of fine quality for over 100 years.
To ensure that your installation proceeds smoothly--please read instructions carefully before you begin.*

Recommended Tools



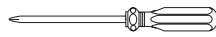
Tape Measure



Drill



Regular Screwdriver



Phillips Screwdriver

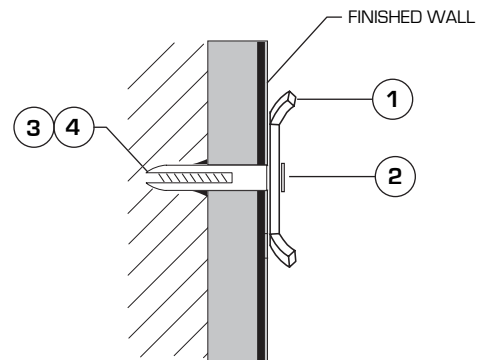
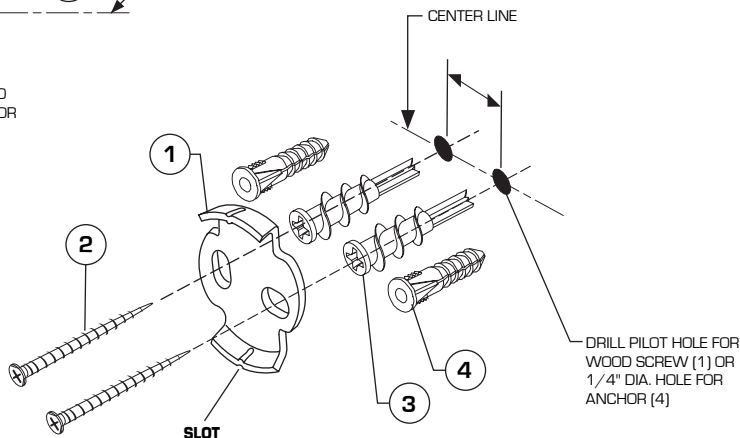
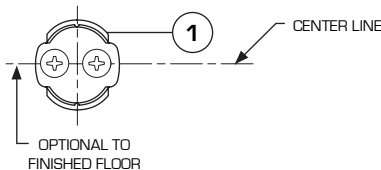
CARE INSTRUCTIONS:

DO: SIMPLY RINSE THE PRODUCT CLEAN WITH CLEAR WATER. DRY WITH A SOFT COTTON FLANNEL CLOTH.

DO NOT: CLEAN THE PRODUCT WITH SOAPS, ACID, POLISH, ABRASIVES, HARSH CLEANERS, OR A CLOTH WITH A COARSE SURFACE.

1 TOWEL RING, SOAP DISH, TUMBLER WITH TOOTHBRUSH HOLDER and ROBE HOOK MOUNTING BRACKET INSTALLATION

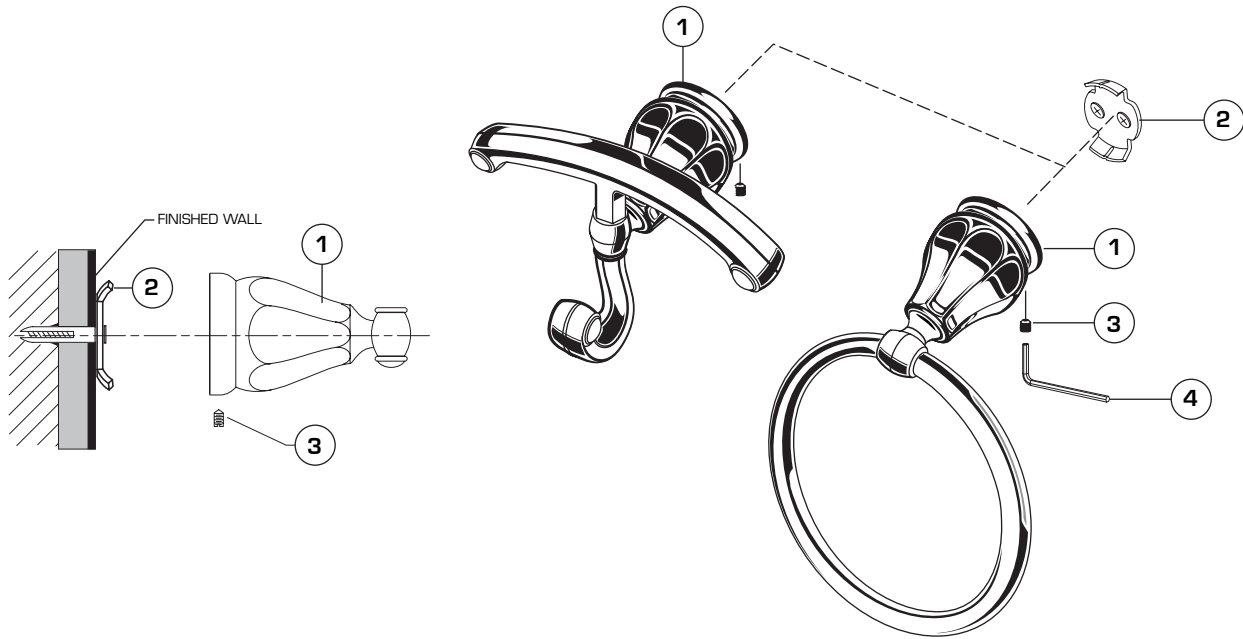
- The TOWEL RING, SOAP DISH, TUMBLER WITH TOOTHBRUSH HOLDER and ROBE HOOK work best if secured to a wall stud or cross brace within the wall, using the SCREWS [2] supplied.
- If the TOWEL RING, SOAP DISH, TUMBLER WITH TOOTHBRUSH HOLDER and ROBE HOOK are to be installed on a tile or plaster wall the DRYWALL ANCHORS or TILE ANCHORS and SCREWS should be used.
- Determine desired height and location (optional) and mark a center line. Using the MOUNTING BRACKET [1] as a template mark the two spots for the mounting holes. If MOUNTING BRACKET [1] is secured to a stud or cross brace drill small pilot holes for SCREWS [2].
- *For installations on drywall*, use DRYWALL ANCHORS [3] and SCREWS [2] for securing MOUNTING BRACKET [1] to wall. Place #2 Phillips screwdriver or cordless screwdriver into recess of anchor. Press into drywall while turning the anchor clockwise until it is seated flush with the wall. Place MOUNTING BRACKET [1] over DRYWALL ANCHORS [3] and insert screws provided with #2 Phillips screwdriver. See illustration below. Secure MOUNTING BRACKET [1] to wall with SCREWS [2].
- *For installations on tiled walls*, If TILE ANCHORS [4] and SCREWS [2] are use for securing MOUNTING BRACKET [1], then drill two 1/4" diameter holes a minimum of 1-1/4" deep. Insert the two TILE ANCHORS [4] flush with face of the finished wall.
- Secure MOUNTING BRACKET [1] to wall with SCREWS [2].



2

TOWEL RING AND ROBE HOOK INSTALLATION

- Align accessory and place ESCUTCHEON (1) onto MOUNTING BRACKET (2). Secure accessory with SET SCREW (3) using 2.5mm HEX WRENCH (4) supplied.



3

SOAP DISH AND TUMBLER WITH TOOTHBRUSH HOLDER INSTALLATION

- Align accessory and place ESCUTCHEON (1) onto MOUNTING BRACKET (2). Secure accessory with SET SCREW (3) using 2.5mm HEX WRENCH (4) supplied.
- FOR SOAP DISH: Place SOAP DISH (5) into TRAY (6).
- FOR TOOTH BRUSH HOLDER with TUMBLER: Place TOOTHBRUSH HOLDER (7) into TRAY (8) and TUMBLER (9) into TOOTH BRUSH HOLDER (7) recess.

