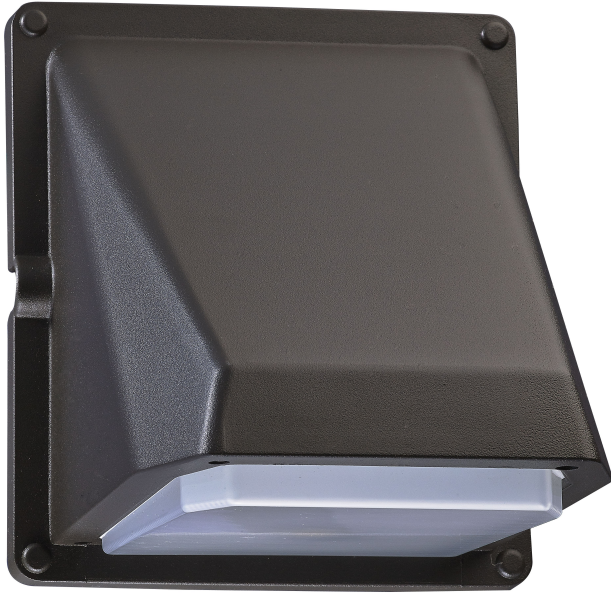


# NUVO 65-050

## 11W LED Wall Mount Door Corridor Fixture



<b>Fixture Type</b> Outdoor Wall Light	<b>Collection</b> No
<b>Finish</b> Bronze	<b>Width</b> 6.49"
<b>Height</b> 7.08"	<b>Shade Material</b> Polycarbonate
<b>Extension</b> 6.49	<b>Number of Modules</b> 1-Module
<b>Light Source</b> LED	<b>Lumen Output</b> 828
<b>Max Wattage</b> 11 Watts	<b>Lamp Type</b> Wall Pack
<b>Bulb Type</b> LED	<b>Bulb Included</b> Yes
<b>Replaceable Light Source</b> No	<b>Certification</b> UL Listed
<b>Safety Rated</b> Wet Location	<b>CA Prop-65</b> Warning
<b>CEC</b> California T24 Compliant	<b>Energy Saver</b> Yes
<b>Energy Star</b> No	<b>UPC</b> 045923630507
<b>Warranty</b> 5-Year Warranty	<b>Voltage</b> 120-277 Volts
<b>Average Rated Hours</b> 55000	<b>RoHS Compliant</b> Yes
<b>UL or ETL Listed</b> Yes	<b>Kelvin Temp</b> 5000K
<b>CRI</b> 70	<b>Photocell</b> No