



Deck Mount Pot Filler KFP600

INSTALLATION INSTRUCTIONS

INSTALLATION MANUAL

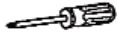
Tools You Will Need:



Plumber's putty



Pipe tape



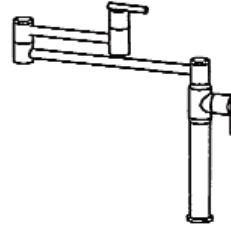
Phillips screwdriver



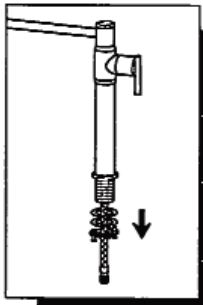
Pliers



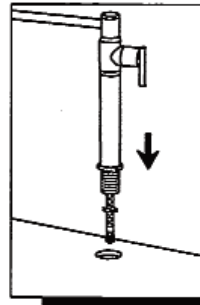
Adjustable wrench



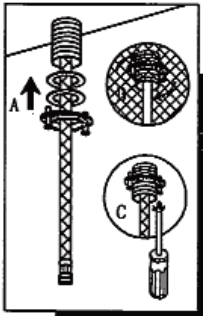
Potfiller Installation



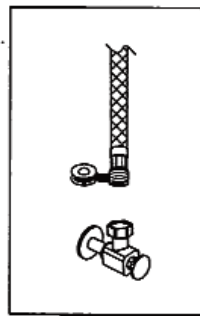
1. Remove the mounting hardware from the faucet.



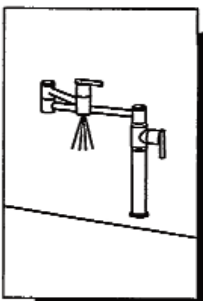
2. Install faucet through center hole.



3. Re-assemble the mounting hardware onto the shank, use phillips screwdriver for final tightening after spout is aligned.



4. Attach two flexible hoses to water supply.

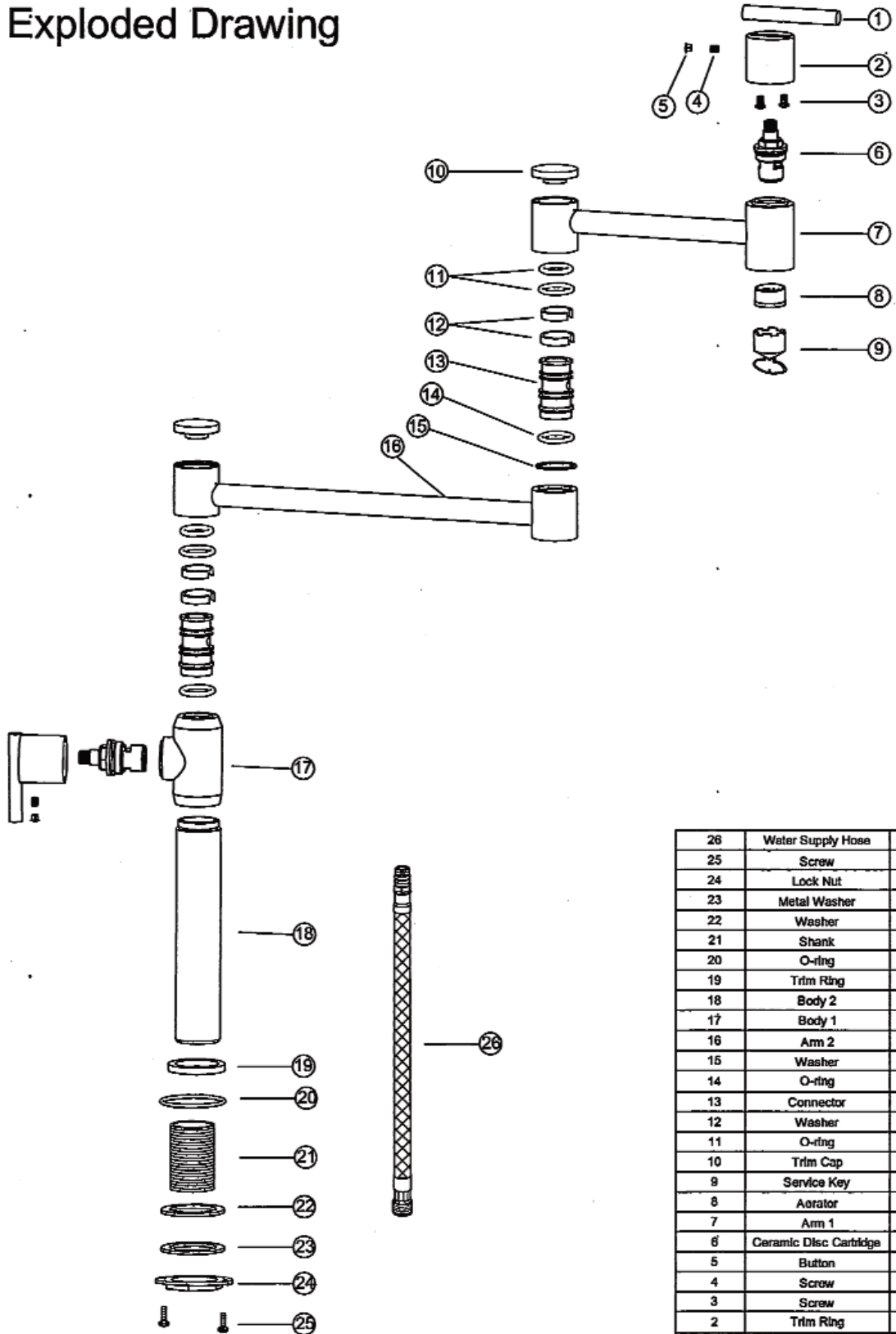


5. After installing faucet, remove aerator assembly and open the cold water supplies. Check for leaks. Turn on faucet handle for one minute to flush debris from faucet. Close the handles and re-assemble the aerator.



Deck Mount Pot Filler KFP600

Exploded Drawing



26	Water Supply Hose	1
25	Screw	2
24	Lock Nut	1
23	Metal Washer	1
22	Washer	1
21	Shank	1
20	O-ring	1
19	Trim Ring	1
18	Body 2	1
17	Body 1	1
16	Arm 2	1
15	Washer	1
14	O-ring	2
13	Connector	2
12	Washer	4
11	O-ring	4
10	Trim Cap	2
9	Service Key	1
8	Aerator	1
7	Arm 1	1
6	Ceramic Disc Cartridge	2
5	Button	2
4	Screw	2
3	Screw	2
2	Trim Ring	2
1	Handle	2
No.	Part Description	Quantity