

SPECIFICATIONS

Features/Benefits

- Diverter on Tub Spout (D501019TC)
- Requires Gerber Treysta™ Rough-In, G00GS500 Series (Horizontal Inputs) or G00GS520 Series (Vertical Inputs), Sold Separately
- Includes Treysta™ Ceramic Disc Pressure Balance Cartridge
- Includes Mono Chic® 5" x 8" Single Function Showerhead, D460066
- 1.75 gpm (6.6 L/min) Max Flow @ 80 psi
- 12 1/2" Shower Arm
- Accommodates Back-to-Back Installation
- Finish-Matched Deep Wall Kit, D113001, Sold Separately
- Finish-Matched Gerber Shallow Wall Kit, GA663B11, Sold Separately



Available Color/Finishes

Color	Description
-------	-------------

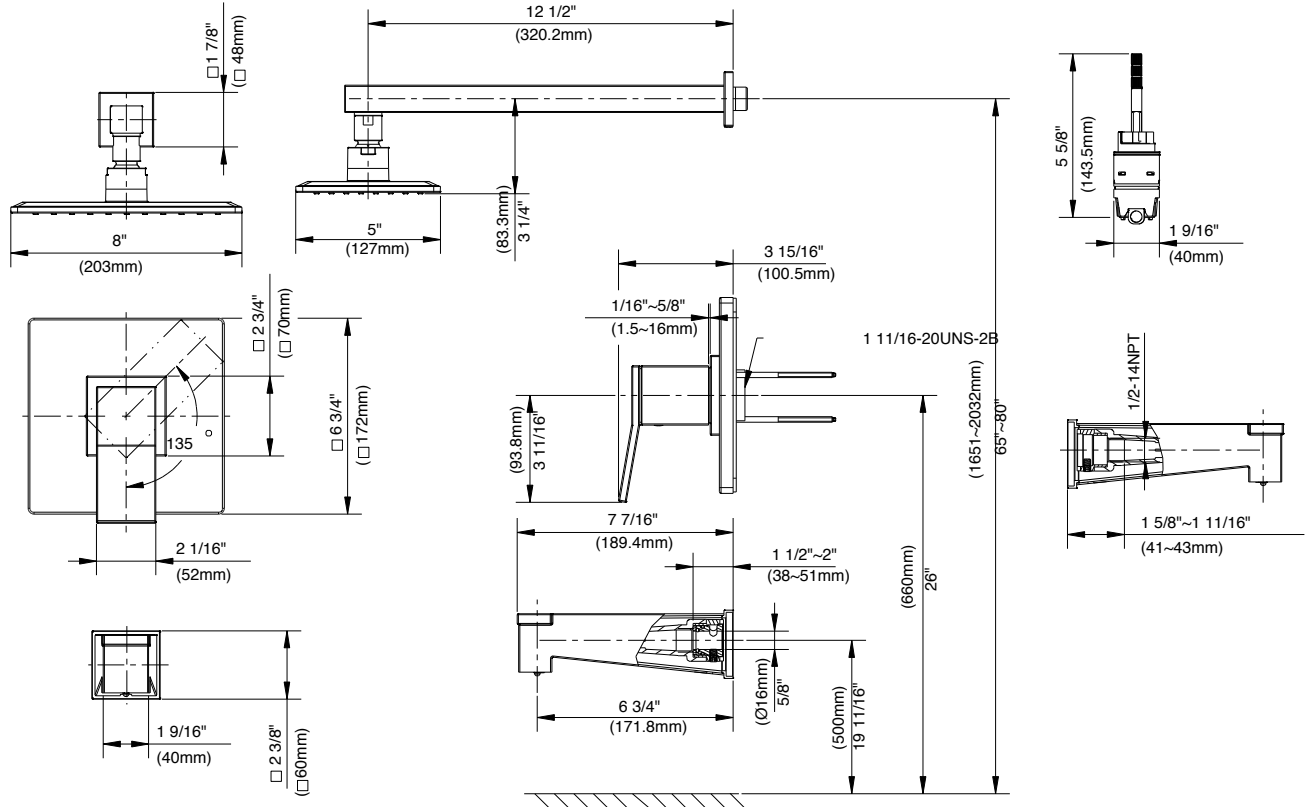
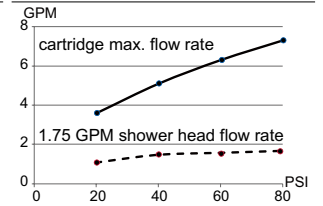
Chrome
Please see danze.com or current price list for available finishes. Finish is defined by additional suffix.

Standards & Certifications



(Lever Handle)

Flow Rate



Submittal Information:

Name: _____ Contractor: _____
 Location: _____ Contact #: _____