


**SPECIFICATIONS**

**Features/Benefits**

- 1.2 gpm (4.5 L/min) Max Flow @ 60 psi
- Features a Clear, Non-Splash Laminar Water Stream
- 4 1/4" Spout Height, 6 1/2" Spout Reach
- Ceramic Disc Cartridge
- Includes Metal Touch Down Drain Assembly
- 3 Hole Mount

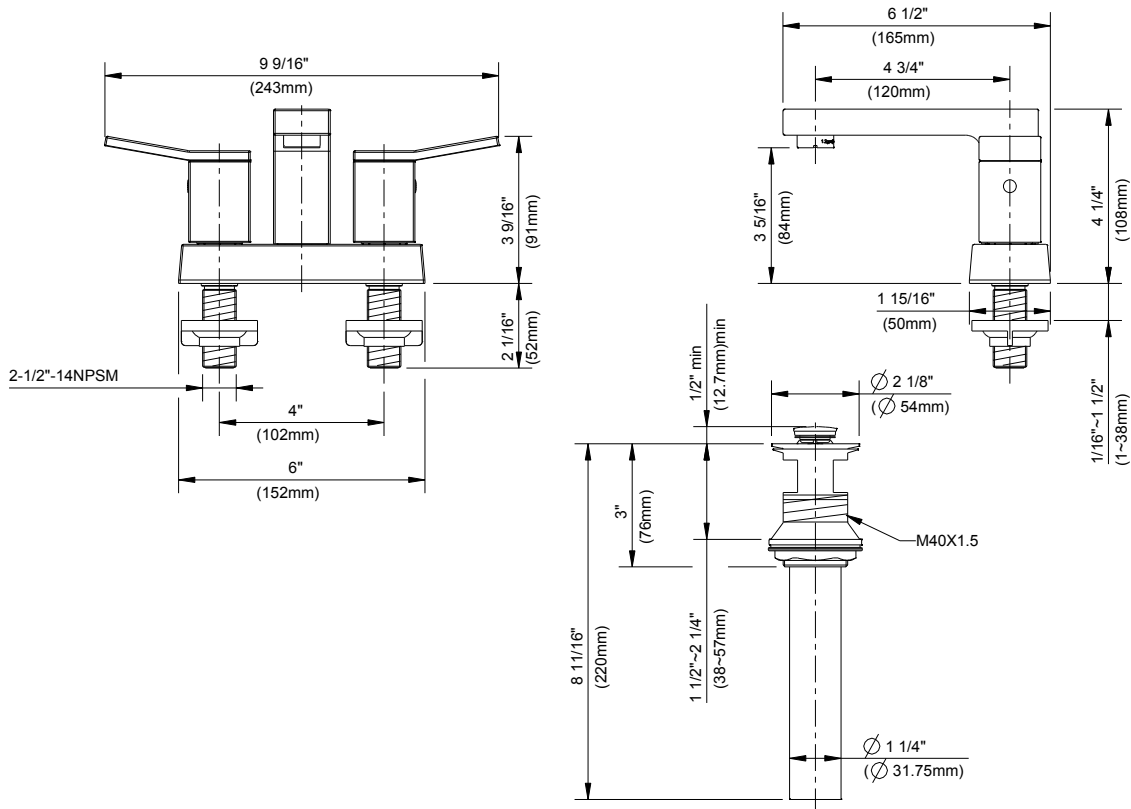


**Available Color/Finishes**

Color	Description
	Chrome

Please see danze.com or current price list for available finishes.  
Finish is defined by additional suffix.

**Standards & Certifications**



**Submittal Information:**

Name: \_\_\_\_\_  
Location: \_\_\_\_\_

Contractor: \_\_\_\_\_  
Contact #: \_\_\_\_\_