

# ShowerLite

## Installation Instructions

---



## ShowerLite LED Back-lit, Fog-free Shower Mirrors

Models 16104-121212BL, 122412BL, 181812BL, & Custom  
June 2018

---

### IMPORTANT INSTRUCTIONS

Only wire the ShowerLite to the 12-volt DC direct plug-in power supply included with this product. Install in accordance with all applicable safety, national and local electrical codes. **Read all instructions before using the ShowerLite ClearMirror.**



**NOTICE:** All installation wiring must be performed by a licensed electrician. Follow the National Electrical Code, local codes, NFPA 70-2011 as applicable.



**NOTICE:** Only use the power supply included with this product.



**NOTICE:** All wiring including new receptacles, must be performed by a licensed electrician. Follow the National Electrical Code or local codes as applicable.



**WARNING:** Direct plug-in power supply must be placed in a dry location outside of the shower. Outlet used must be at least three feet from the shower. Follow NEC Article 406. Failure to follow instructions could result in death or serious injury.

---

## General Guidelines

- Extreme caution is necessary when any heater is used by or near children or invalids and whenever the heater is left operating and unattended.
- Do not operate any heater after it malfunctions. Disconnect power at service and have heater inspected by a reputable electrician before reusing.
- Do not use outdoors.
- To disconnect heater, turn controls to off using light/fan/receptacle switch, and turn power off to circuit at the main disconnect panel.
- Use this heater only as described in this manual. Any other use not recommended by the manufacturer may cause fire, electric shock, or injury to persons.
- Do not install on un-insulated exterior walls in cold climate areas.
- Do not install if product is damaged.
- Do not bend, cut, alter, submerge in water, or use for purposes other than described.
- Mirror must be caulked or grouted into tile, flush with the tile surface. Edges of the mirror cannot be exposed to touch.
- Contact ClearMirror for LED replacement parts.
- Consult the NEC, Article 551 for rec. vehicle installation.
- **SAVE THESE INSTRUCTIONS.**

## Installation

1. Before installing ceramic tile, measure for desired ShowerLite height from the finished shower floor.
2. Prepare an area for the outside dimensions of the mirror adjusting for your grout lines as needed.
3. Measure & mark the location of the LED lights.
4. Remove the marked area of wallboard to allow the mirror to install flush with the tile and cut a small hole for the LED and heater barrel connector leads (see Figure 1).

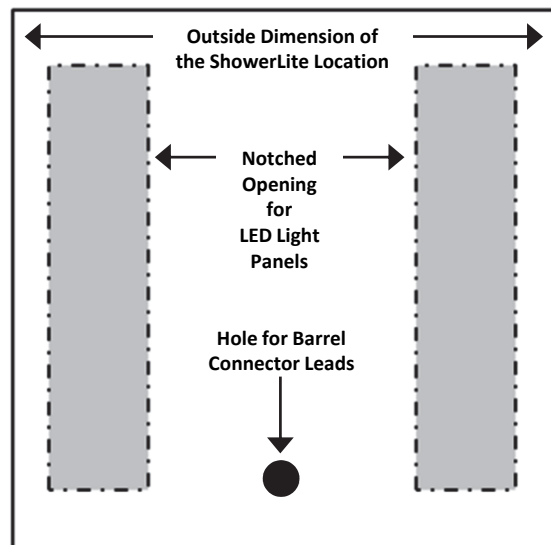


Figure 1. Preparing the wall board (front view).



**WARNING:** This stage requires a qualified electrician and conformance with both the National Electrical Code and local building codes. Turn off the power to the circuit connected to the light fixture at the disconnect means. Failure to do so could result in death or serious injury.

## WIRING

The ShowerLite uses a series of provided barrel connectors and a plug-in power supply.

Maximum distance from mirror to outlet is 25 ft.

The spider cable, shown in Figure 2 connects the heater and both LED light panels to the power supply. Please note there is one extra position on this connector. **This connector is not used.**

The 10-foot extension is inserted between the spider connector and the power supply. **Only use the 10 ft. extension cable if it is needed.**

The power supply is **plugged into a switched outlet**. The outlet is either dedicated for the ShowerLite or tied into another switched light in the bathroom.

1. Run power supply wires from the provided low-voltage plug-in power supply to the opening at the mirror location. The power supply wires are run through the wall.
2. Connect the leads from the LEDs and the heater to the spider cable and test.
3. Before mounting to the wall, wrap each connection with electrical tape to insure the leads do not disconnect during installation.



Figure 2. Spider connector, 10 ft. extension and plug-in power supply.



**NOTICE:** Use only supplied barrel connection wiring between the mirror and the outlet. All wiring must be in accordance with applicable installation code, NFPA 70-2011, National Electric Code.

The direct plug-in power supply must be accessible for service and replacement and must have some air flow. Do not mount the power supply in a closed wall. Common locations include: cabinets, closets, attics and adjoining rooms.

The direct plug-in power supply is plugged in to a switched outlet.



**NOTICE:** This stage requires two people. One to hold the mirror and another to connect the wires. Use electrical tape to prevent connections from coming apart.

## MOUNTING THE MIRROR

1. One person holds the mirror while another connects & tapes the leads to the spider connector.
2. Feed the excess lead wires into the opening.
3. Test to make sure LEDs and the heater are working. It takes 3 to 5 minutes to heat the mirror.
4. Apply mirror mastic adhesive to the mirror back on areas that will contact the wall board. It is safe to apply mastic on the heater.
5. Apply a **continuous bead around the entire edge** perimeter to protect mirror, as shown in Figure 3.
6. Carefully mount to the wall.
7. Securely **tape and brace the mirror in place for 24 to 48 hours or until dry.**

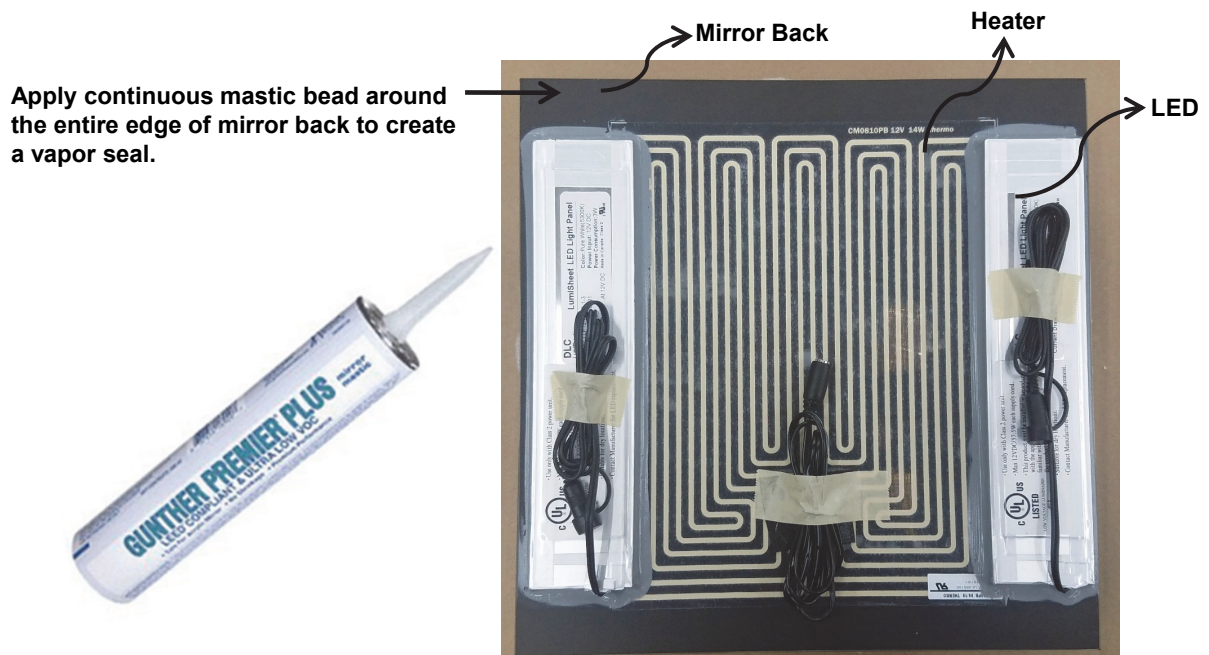


Figure 3. Applying Mirror Mastic.

### Use Premium Mirror Mastic for Best Results

To prevent damage to the mirror backing, use Gunther Premier Plus Mirror Mastic. It is available from your local mirror/glass specialist or online through Amazon or CR Laurence.

This product does have a shelf life so we are not able to provide it with your shower mirror.

Other mirror mastics will work but Gunther Premier Plus is recommended. See [ClearMirror.com/FAQ](http://ClearMirror.com/FAQ)

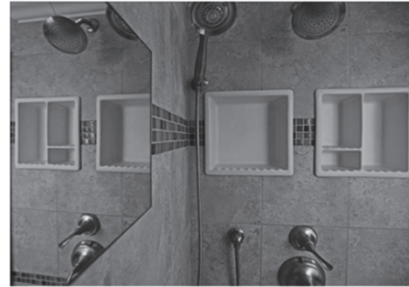


**WARNING:** Mirror must be caulked or grouted into the tile or surround complete and flush with tile surface. Back edge of the mirror cannot be exposed to touch. Failure to do so could result in electric shock or injury.

---

## FINISHING THE MIRROR

Caulk or grout around the edges.  
See Figure 4.



*Figure 4. Grout around the mirror to seal and finish.*

# IMPORTANT INSTRUCTIONS

## SAVE THESE INSTRUCTIONS

**When using electrical appliances, basic precautions should always be followed to reduce the risk of fire, electric shock, and injury to persons, including the following:**

**Read all instructions before installing or using this heater.**

- Do not operate any heater after it malfunctions. Disconnect power at service panel and have heater inspected by a reputable electrician before reusing.
- Do not use outdoors.
- To disconnect heater, turn bath switch to off, and turn off power to heater circuit at main disconnect panel (or operate internal disconnect switch if provided).
- Do not insert or allow foreign objects to enter any ventilation or exhaust opening as this may cause an electric shock or fire, or damage the heater.
- To prevent a possible fire, do not block air intakes or exhaust in any manner.
- Use this heater only as described in this manual. Any other use not recommended by the manufacturer may cause fire, electric shock, or injury to persons.

## OPERATING INSTRUCTIONS

- The ShowerLite assembly must be properly installed before it is used.
- The ShowerLite is to be installed flush with the tile with wiring fed from behind the full, wall-mounted assembly.
- Be certain that the controls are operational per the instructions in that the bathroom light, ceiling fan or alternate switch power on and power off the ShowerLite.
- Do not modify the installation from within (or outside) the assembly, and do not tamper with any user-operated devices intended to reduce the risk of fire, electric shock, or injury to persons; and warn against tampering with such devices.
- Any servicing should only be done by a qualified service person.



## MAINTENANCE INSTRUCTIONS

The ShowerLite requires very little user maintenance:

- Be sure the power is turned off and the heating element (mirror surface) is cool prior to performing any of these functions.
- Dampen a lint-free cloth and lightly clean the surface. Never use chlorine base, chemical glass cleaners or any abrasive material on the Mirror. Use of those cleaners or chemicals will void all warranties and guarantees. DO NOT SPRAY MIRROR. Heater and LEDs on the back of the mirror should never be accessed and requires no cleaning.
- The mirror will not require internal or behind assembly cleaning.
- As necessary, clean only the surface of the mirror with an approved glass cleaner and soft cleaning cloth.
- All other servicing should be performed by qualified service personnel. Call ClearMirror directly with any warranty or operational problems or concerns.

## GROUNDING INSTRUCTIONS

This ShowerLite assembly with a ClearMirror heater is for use with a 12-volt power supply and comes with a grounded cord set.

## WARRANTY INFORMATION

NewHome Bath & Mirror, Inc. DBA ClearMirror and its affiliates will not warranty the labor or material costs for installation, replacement or use of ShowerLite when operated in an application that is lower than 50° F.

NewHome Bath & Mirror, Inc. and its suppliers cannot be held responsible for damage caused by improper installation. These installation instructions are to be used as a guide only while meeting all applicable building codes. Consult a professional installer if you have any questions.

The ShowerLite product line is provided with a five-year warranty against defects in workmanship or materials. Warranty only covers replacement parts only. Improper installation and/or cleaning voids the warranty. Contact your installer or original place of purchase for issues relating to installation and replacement. The warranty is void without proof of purchase, proper installation, or if product is altered in any way.



**ClearMirror**  
2861 Eagandale Blvd • Eagan, MN 55121 • 651.251.9036  
ClearMirror.com