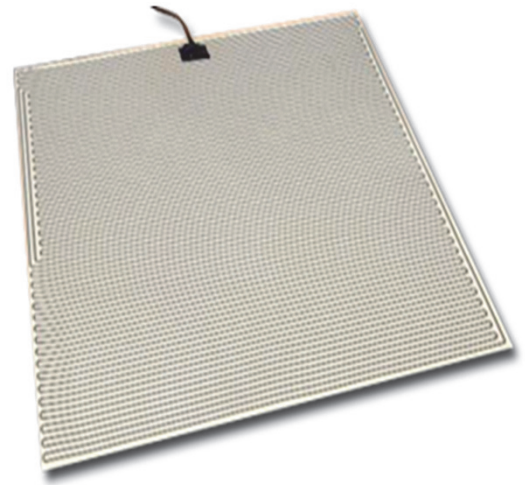
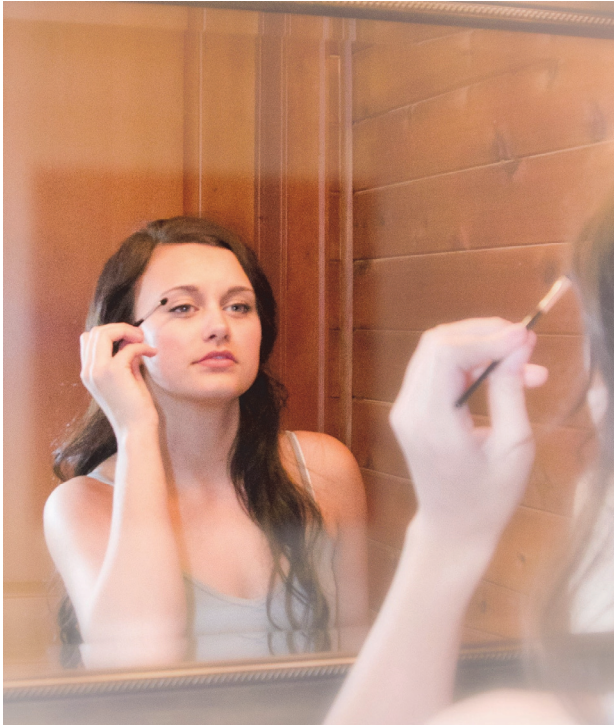


Original ClearMirror

Installation Instructions



Fog-free Heaters for Vanity Mirrors

Models 16101-1212120H, 1414120H, 2020120H, 2030120H
and Custom Sizes

June 2018

IMPORTANT INSTRUCTIONS

Original ClearMirror heaters are designed to be powered by a switched circuit. A 15A or 20A fuse or circuit breaker at the electrical box should protect the circuit. **Read all instructions before using the Original ClearMirror.**



NOTICE: All wiring must be performed by a licensed electrician. Follow the National Electrical Code or local codes as applicable.



WARNING: Failure to follow instructions could result in death or serious injury.



NOTICE: ClearMirror height is usually 2 inches higher than the tallest user's height.



NOTICE: ClearMirror heater must be smaller than the mirror. Leave at least a 1" space from mirror edges to the heater edges.

General Guidelines

Install the Original ClearMirror to a junction box in accordance with all applicable safety, national and local electrical codes. All wiring between the mirror heater and the bathroom light junction boxes must be installed per local and national electrical codes using wire system identified by the National Electrical Code. Consult a qualified electrician for all wiring.

- Do not install on mirrors located on uninsulated external walls.
- Only wire the pad to a 110/220 volt power supply.
- These installation procedures are for mirrors that are not permanently installed. Consult local authorities for variations in installation.
- Do not install if product is damaged. Do not bend, alter, submerge in water, or use product for purposes other than described. Do not overlap ClearMirror pads if using more than one on a mirror.
- Mirror must be larger than ClearMirror heater.
- Use caution with all electrical appliances. Install according to these instructions.

Installation

Install the Original ClearMirror to a junction box in accordance with all applicable safety, national and local electrical codes. All wiring between the mirror heater and the bathroom light junction boxes must be installed per local and national electrical codes using wire system identified by the National Electrical Code. Consult a qualified electrician for all wiring.

- Choose the mirror defogger location.
- Install an electrical junction box.
- Adhere the mirror defogger to the back of mirror.
- Wire mirror defogger to junction box to switched 110/220 power supply – preferably bathroom light switch or fan to ensure it is turned off when not in use.
- Use two people for safety.

TOOLS NEEDED

Electrical tape, flashlight, 4-yellow or red wire connectors, non-sheathed wire cable, remodeler's junction box, utility knife, wire strippers, screwdriver, pliers and keyhole saw.



WARNING: This stage requires a qualified electrician and conformance with both the National Electrical Code and local building codes. Turn off the power to the circuit connected to the light fixture at the disconnect means. Failure to do so could result in death or serious injury.

MEASURE FOR CLEARMIRROR INSTALLATION

With mirror removed, mark junction box location on the wall where the sink's center meets the top edge of the ClearMirror heater. Normally 2 inches higher than the tallest user as shown in Figure 1.

INSTALL ELECTRICAL BOX

Shut off power to the circuit where heater is to be connected at the disconnect means.

- Use a keyhole saw or drywall router to cut a tight fit for the remodelers' box.
- Install remodeler's electrical junction box and tighten screws until junction box is secure in the opening.

WIRE TO OVERHEAD LIGHT FIXTURE

- Disconnect overhead light fixture base from the wall to expose the junction box.
- Drop down a Romex (non-sheathed) cable to the ClearMirror junction box below.

APPLY CLEARMIRROR TO MIRROR BACK

- Before attaching ClearMirror pad onto mirror, re-measure the sink's center and height position and mark an 'X' on the back of the mirror at this location (see Figure 1).
- Clean area of mirror application with isopropyl alcohol solution to remove residues and dry excess moisture



WARNING: Do not use any fuel-based cleaners.

- Apply ClearMirror to mirror by removing contact paper and aligning edge of leads connection over the 'X' on the back of the mirror.
- Press firmly around all edges and through the middle of the ClearMirror heater pad.

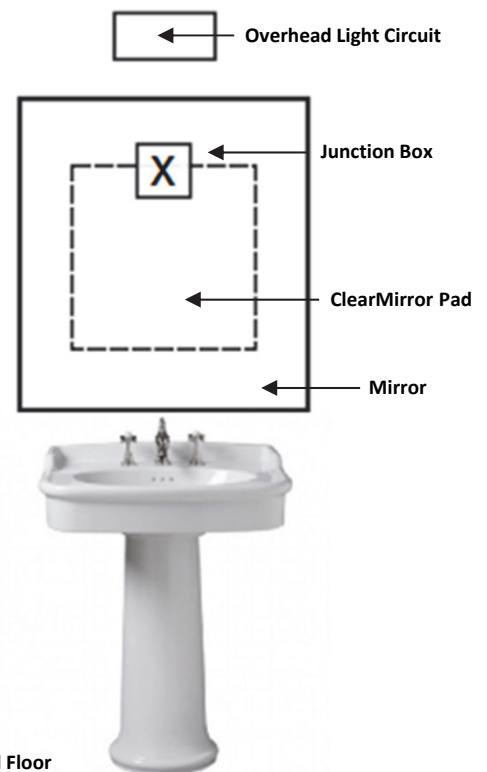


Figure 1. ClearMirror height and positioning.



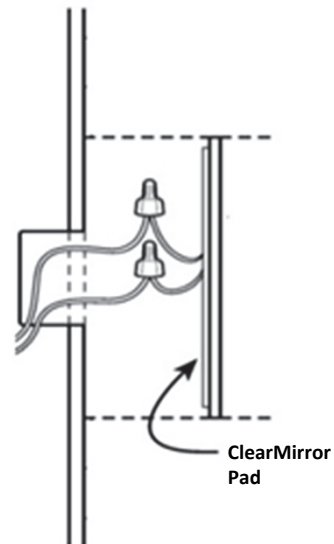
NOTE: Polarity is not relevant - there are neither positive nor negative connections on the ClearMirror heater pad, nor are there any ground wires



CAUTION: Ensure leads are not stuck between the mirror and the wall.

CONNECT LEADS TO POWER SUPPLY

1. With assistance of another person, position the mirror to connect the heater leads to the wire cable in the junction box.
2. Connect the mirror heater and power wires.
3. Wrap wire connectors and wire with electrical tape and push excess into junction box.
4. Replace light fixture onto base.
5. Turn on circuit breaker and switch for overhead light.
6. Test ClearMirror by placing hand on surface of mirror. It should heat in two minutes.



IMPORTANT INSTRUCTIONS

SAVE THESE INSTRUCTIONS

Read all instructions before installing or using this heater.

When using electrical appliances, basic precautions should always be followed to reduce the risk of fire, electric shock, and injury to persons, including the following:

- Do not operate any heater after it malfunctions. Disconnect power at service panel and have heater inspected by a reputable electrician before reusing.
- Do not use outdoors.
- To disconnect heater, turn bath switch to off, and turn off power to heater circuit at main disconnect panel (or operate internal disconnect switch if provided).
- Do not insert or allow foreign objects to enter any ventilation or exhaust opening as this may cause an electric shock or fire, or damage the heater.
- To prevent a possible fire, do not block air intakes or exhaust in any manner.
- Use this heater only as described in this manual. Any other use not recommended by the manufacturer may cause fire, electric shock, or injury to persons.
- **DO NOT USE IN SHOWER APPLICATIONS!**
Only the Shower ClearMirror and ShowerLite models are UL approved for use in a shower.

OPERATING

- Original ClearMirror must be properly installed before it is used.
- Install Original ClearMirror over a bathroom vanity sink with wiring fed from behind the full, wall-mounted assembly.
- Be certain that the controls are operational per the instructions above in that the bathroom light, ceiling fan or alternate switch power on and power off the Original ClearMirror.
- Do not modify the installation from within (or outside) the assembly, and do not tamper with any user-operated devices intended to reduce the risk of fire, electric shock, or injury to persons; and warn against tampering with such devices.
- Any servicing should only be done by a qualified service person.

MAINTENANCE

- Be sure that all excess wires are stowed in the electrical box, and are not hanging outside of the protective area of the mirror.
- As necessary, clean only the surface of the mirror with an approved glass cleaner and soft cleaning cloth.
- All other servicing should be performed by qualified service personnel. Call ClearMirror directly with any warranty or operational problems or concerns.

GROUNDING

This Original ClearMirror heater is for use with 120 volt power supply. The cord (leads) exiting the back of the mirror assembly are 18-gauge and are not required to be grounded.

WARRANTY INFORMATION

NewHome Bath & Mirror, Inc. DBA ClearMirror and its affiliates will not warranty the labor or material costs for installation, replacement or use of Original ClearMirror when operated in an application that is lower than 50° F.

NewHome Bath & Mirror, Inc. and its suppliers cannot be held responsible for damage caused by improper installation. These installation instructions are to be used as a guide only while meeting all applicable building codes. Consult a professional installer if you have any questions.

The Original ClearMirror product line is provided with a five-year warranty against defects in workmanship or materials. Improper installation and/or cleaning voids the warranty. Contact your installer or original place of purchase for issues relating to installation and replacement. The warranty is void without proof of purchase, proper installation, or if product is altered in any way.



ClearMirror
2861 Eagandale Blvd • Eagan, MN 55121 • 651.251.9036