

AMERICAN CYLINDER ABOVE (ACA)*

Solid Brass Designs

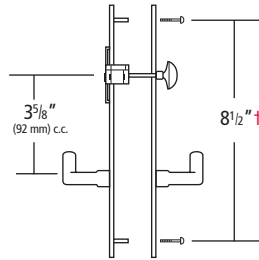


71000ACA 72000ACA

Stainless Steel



73000ACA



*Position of cylinder is 3⁵/₈" (92 mm) center-to-center from lever hole.

† 73000 plate is 9¹/₂"

AMERICAN CYLINDER BELOW (ACB)*

Solid Brass Designs

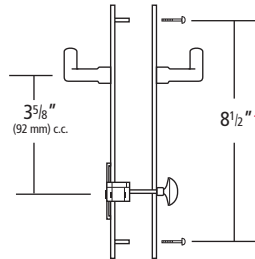


71000ACB 72000ACB

Stainless Steel



73000ACB



*Position of cylinder is 3⁵/₈" (92 mm) center-to-center from lever hole.

† 73000 plate is 9¹/₂"

EUROPEAN CYLINDER BELOW (ECB)*

Solid Brass Designs

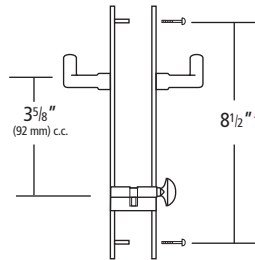


71000ECB 72000ECB

Stainless Steel



73000ECB



*Position of cylinder is 3⁵/₈" (92 mm) center-to-center from lever hole.

† 73000 plate is 9¹/₂"

TURNPIECE & CYLINDER COMPONENTS

AMERICAN CYLINDER ABOVE (ACA) & AMERICAN CYLINDER BELOW (ACB)



No. 103
Ships standard with 71000 plate for American Cylinder.



No. 102
Ships standard with 72000 plate for American Cylinder.



No. 6000
Ships standard with 73000 plate for American Cylinder.



No. 1599
American Cylinder



American Cylinder Collar
MPCH/RA (Rect.)
MPCH/OA (Oval)

EUROPEAN CYLINDER BELOW (ECB)



No. 805/41
European Cylinder
Turnpiece only for patio function



No. 805/82
European Cylinder
Turnpiece cylinder by key for entrance



European Cylinder Collar
MPCH/RP (Rect.)
MPCH/OP (Oval)

MULTIPOINT TRIM

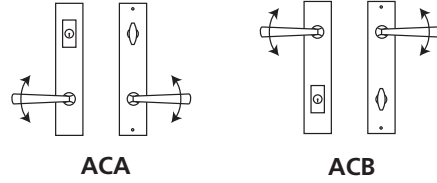
OmniaIndustries.com | 975.239.7272

FUNCTIONS

ACA or ACB

Entry Function – ACA or ACB with American Cylinder

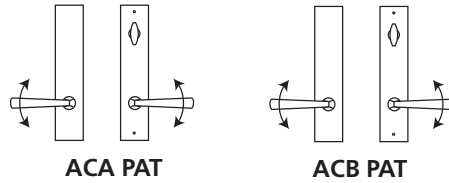
- Set includes:
- 2 – Backplates
- 1 – Cylinder Collar mounted 3⁵/₈" (92 mm) c.c. above or below the lever handles
- 2 – Levers with spindles
- 1 – American Cylinder with a lazy tailpiece
- 1 – Turnpiece
- 2 – Thru-bolt screws



Active levers both sides. Key outside, by turnpiece inside.

Patio Function (PAT) – ACA or ACB

- 2 – Backplates
- 2 – Levers with spindles
- 1 – Turnpiece
- 2 – Thru-bolt screws

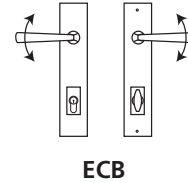


Active levers both sides. Turnpiece inside.

ECB

Entry Function – ECB with a European (Profile) Cylinder

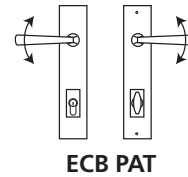
- Set includes:
- 2 – Backplates
- 2 – Cylinder Collars mounted 3⁵/₈" (92 mm) c.c. below the lever handles
- 2 – Levers with spindles
- 1 – European Profile Cylinder with key outside, turnpiece inside
- 2 – Thru-bolt screws



Active levers both sides. Key outside, by turnpiece inside.

Patio Function (PAT) – ECB

- 2 – Backplates
- 2 – Levers with spindles
- 1 – Turnpiece Cylinder
- 2 – Thru-bolt screws

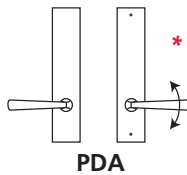


Active levers both sides. Turnpiece inside.

PAIR DUMMY ACA, ACB or ECB

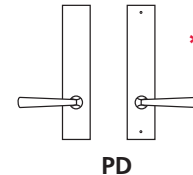
Pair Dummy Active (PDA) – ACA, ACB or ECB

- 2 – Backplates
- 2 – Levers with spindles
- 2 – Thru-bolt screws
- Active lever inside, by inactive lever outside.



Pair Dummy (PD) – ACA, ACB or ECB

- 2 – Backplates
- 2 – Levers with spindles
- 2 – Thru-bolt screws
- Inactive levers both sides.



* Drawing shows ACA only. Also available as ACB or ECB.

Thru-Bolting Mounting Screws are in a fixed location and cannot be modified. In some cases, new thru-bolting holes are required to be drilled at 8¹/₂" (216 mm) c.c. (9¹/₂" (242 mm) c.c. for 73000 plate). In most cases, our backplates will cover any existing thru-bolting holes. Our trim is intended to replace standard trim shipped by most door manufacturers.

BACKPLATE DIMENSIONS:

71000 SERIES

- 9⁵/₈" (244 mm) Long
- 1³/₄" (44 mm) Wide
- 1¹/₂" (12.5 mm) Projection
- 8¹/₂" (216 mm) c.c. Thru-Bolting

72000 SERIES

- 9¹³/₁₆" (250 mm) Long
- 2" (50 mm) Wide
- 1¹/₂" (12.5 mm) Projection
- 8¹/₂" (216 mm) c.c. Thru-Bolting

73000 SERIES

- 11" (280 mm) Long
- 1⁵/₈" (40 mm) Wide
- 7¹/₁₆" (10 mm) Projection
- 9¹/₂" (242 mm) c.c. Thru-Bolting