

Marchio / Brand ZUCCHETTI

Classe / Class MISCELLANEOUS

ON

Z94598

Deviatore 2/3 vie. / 2/3 way diverter.



Deviatore 2/3 vie senza apertura/chiusura acqua, uscite da 1/2".

2/3 way diverter without water on/off function, 1/2" outlets.

R97830

Parte incasso deviatore 2 vie / Built-in part - 2 way diverter



R97835

Parte incasso deviatore 3 vie / Built-in part - 3 way diverter



Finiture / Finishes



Cromo / Chrome



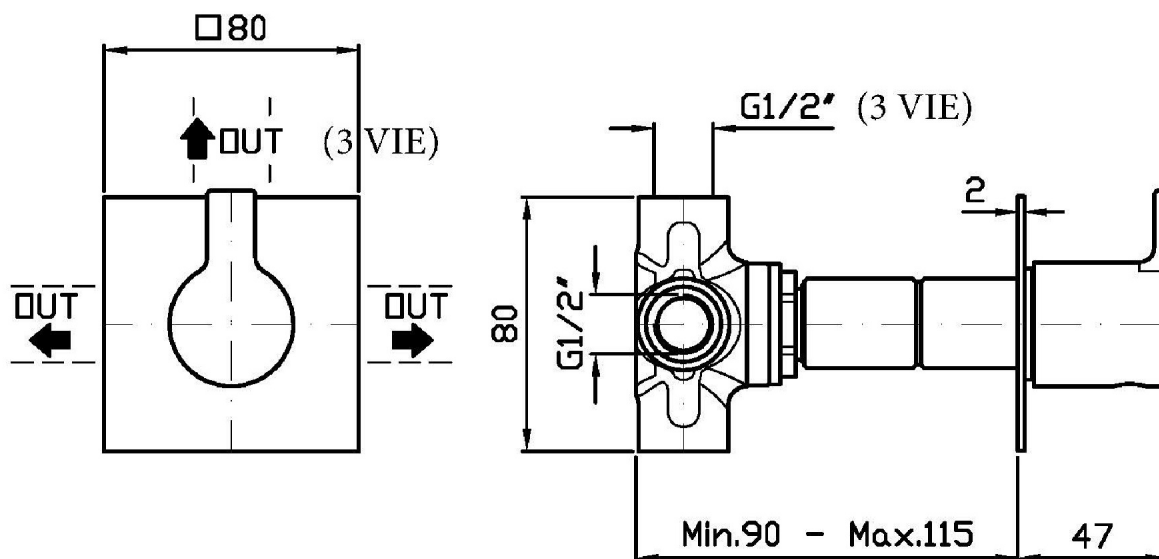
Nickel Spazzolato /
Brushed Nickel

C3

ON

Z94598

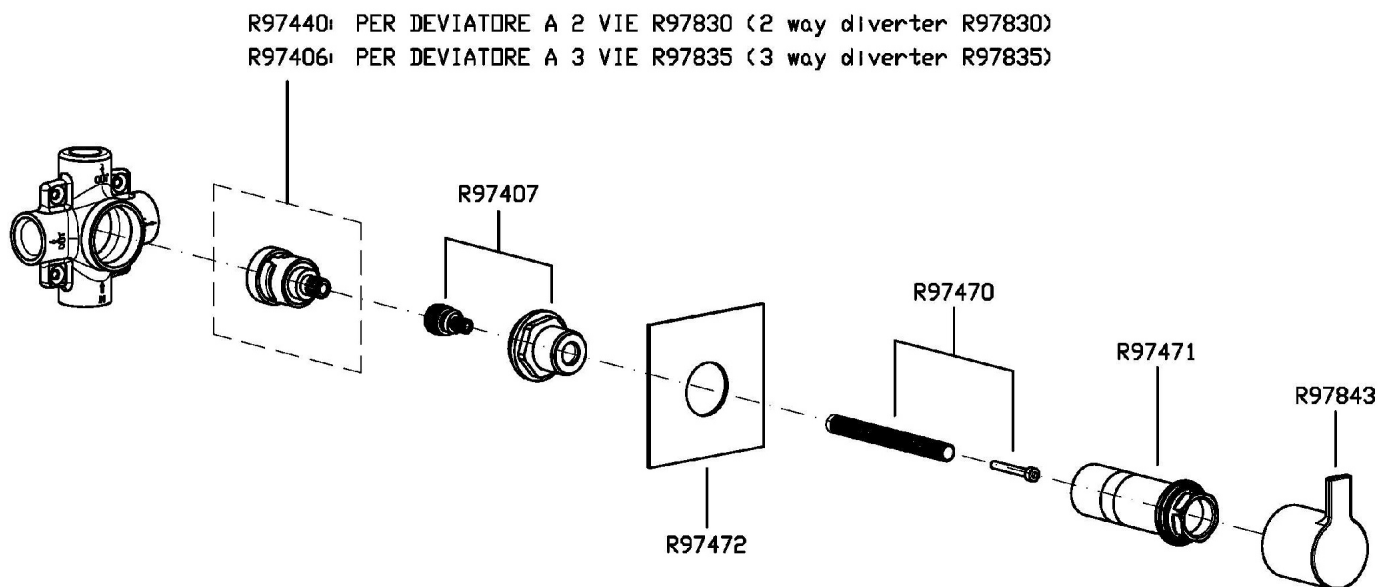
Disegno Complessivo / Overall Drawing



ON

Z94598

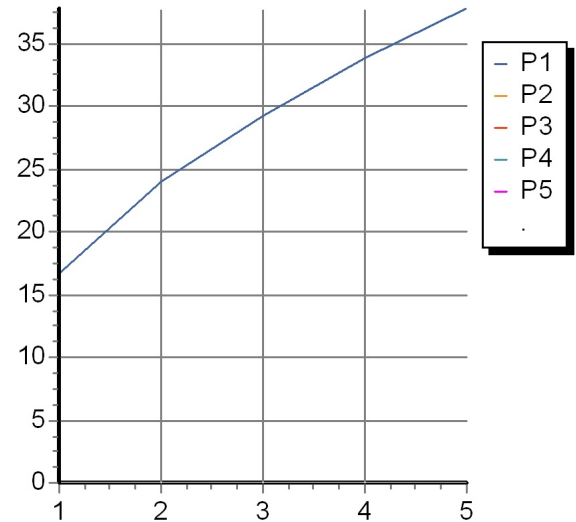
Esplosi / Exploded



ON

Z94598 Portate / Flowrates (lt/min)

| PRESSIONE PRESSURE | 1 BAR | 2 BAR | 3 BAR | 4 BAR | 5 BAR |
|-----------------------|-------------|-----------|-------------|-------------|-------------|
| DEVIATORE DIVERTER | 16,7 | 24 | 29,2 | 33,8 | 37,8 |
| P1 | | | | | |
| P2 | | | | | |
| P3 | | | | | |
| P4 | | | | | |
| P5 | | | | | |



ON

Z94598 Pesì e Misure / Weights and Sizes

| | | |
|---------------------------|--------------|------------------|
| Peso (Kg) Weight (lb) | 0,56 (Kg) | 1,234576 (lb) |
| Volume (dc3) - (in3) | 0,91 (dc3) | 0,000056 (in3) |
| h (mm) - (in) | 66 (mm) | 2,5984266 (in) |
| L1 (mm) - (in) | 111 (mm) | 4,3700811 (in) |
| L2 (mm) - (in) | 123 (mm) | 4,8425223 (in) |

