

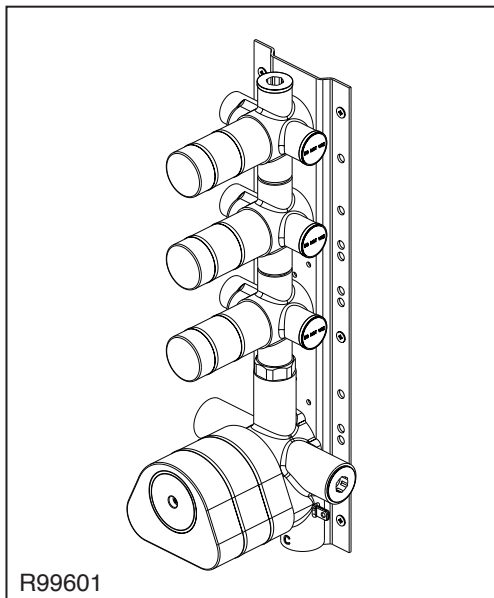


see what Delta can do™

ROUGH-IN THERMOSTATIC MIXER ■ MagnaFlow™ Collection

STANDARD SPECIFICATIONS:

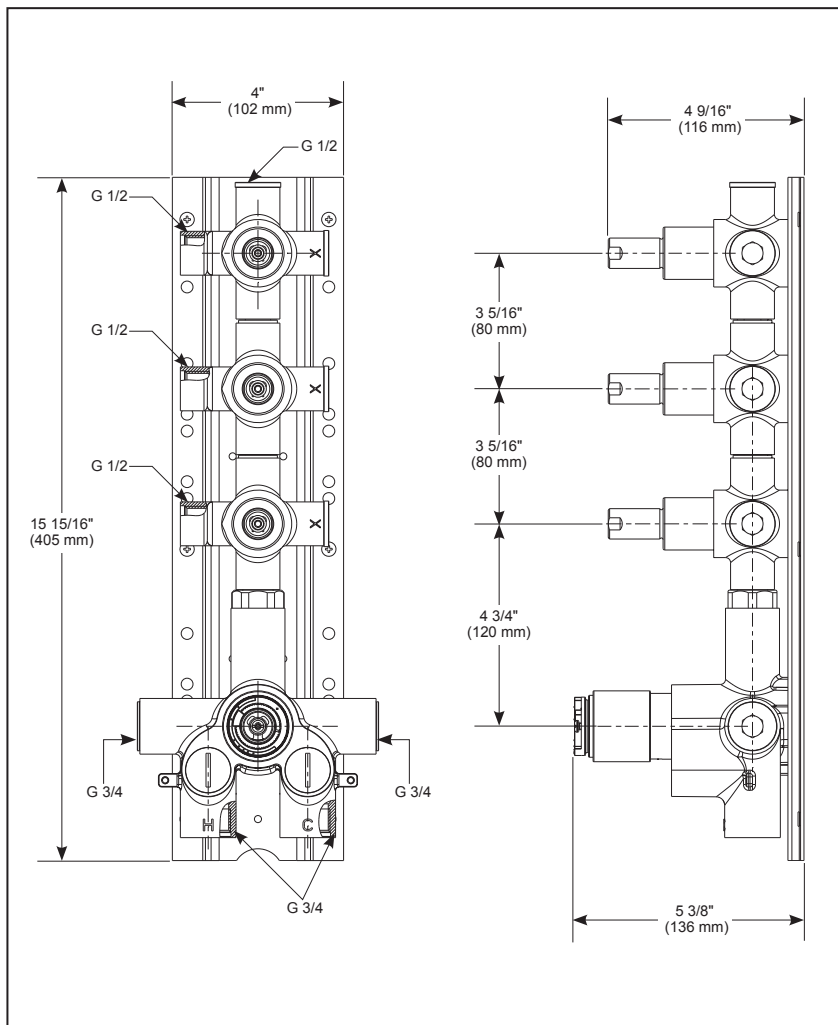
- Casted brass body
- The mechanical performance of thermostatic valve meets all applicable requirements of ASSE 1016
- The mechanical performance of volume valve meets ASME A112.18.1/CSA B125.1
- Thermostatic valve maintains the outlet temperature at $\pm 2^{\circ}\text{C}$ ($\pm 35.6^{\circ}\text{F}$)
- 100% leak tested
- G 3/4 thread connection for inlet and G 1/2 connection for outlet
- Must also order Trim T999001 for Vertical installation or Trim T999003 for horizontal installation



R99601

Submitted Model No.: _____

Specific Features: _____



Delta Faucet Company India Private Limited

Unit No. 1061/1062, 10th Floor, Tower B1, Spaze IT Park, Sector 49
Sohna Road, Gurgaon 122018
© 2018 Delta Faucet Company