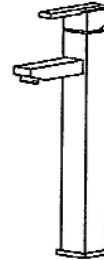
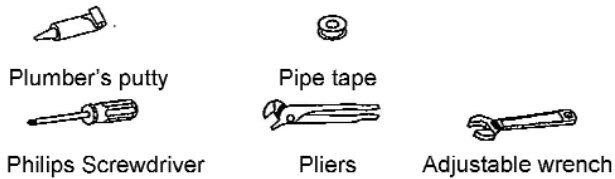




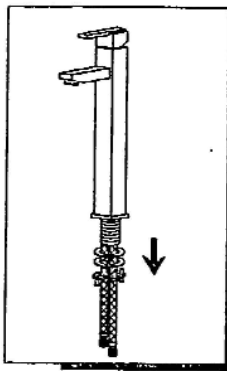
Single Handle Vessel Faucet LFB406

INSTALLATION INSTRUCTIONS

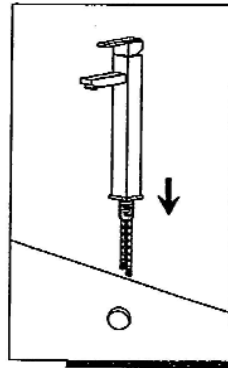
Tools You Will Need:



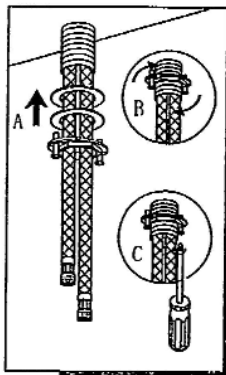
INSTALLATION STEPS:



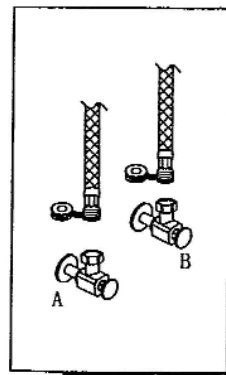
1. Remove the mounting hardware from the faucet.



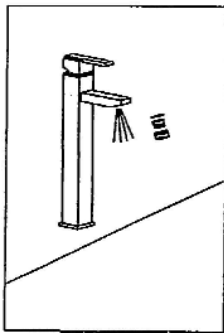
2. Install faucet body through top of sink.



3. From underneath the sink, replace the washers and lock nut. Use philips screwdriver for final tightening after spout is aligned.



4. Connect water supply

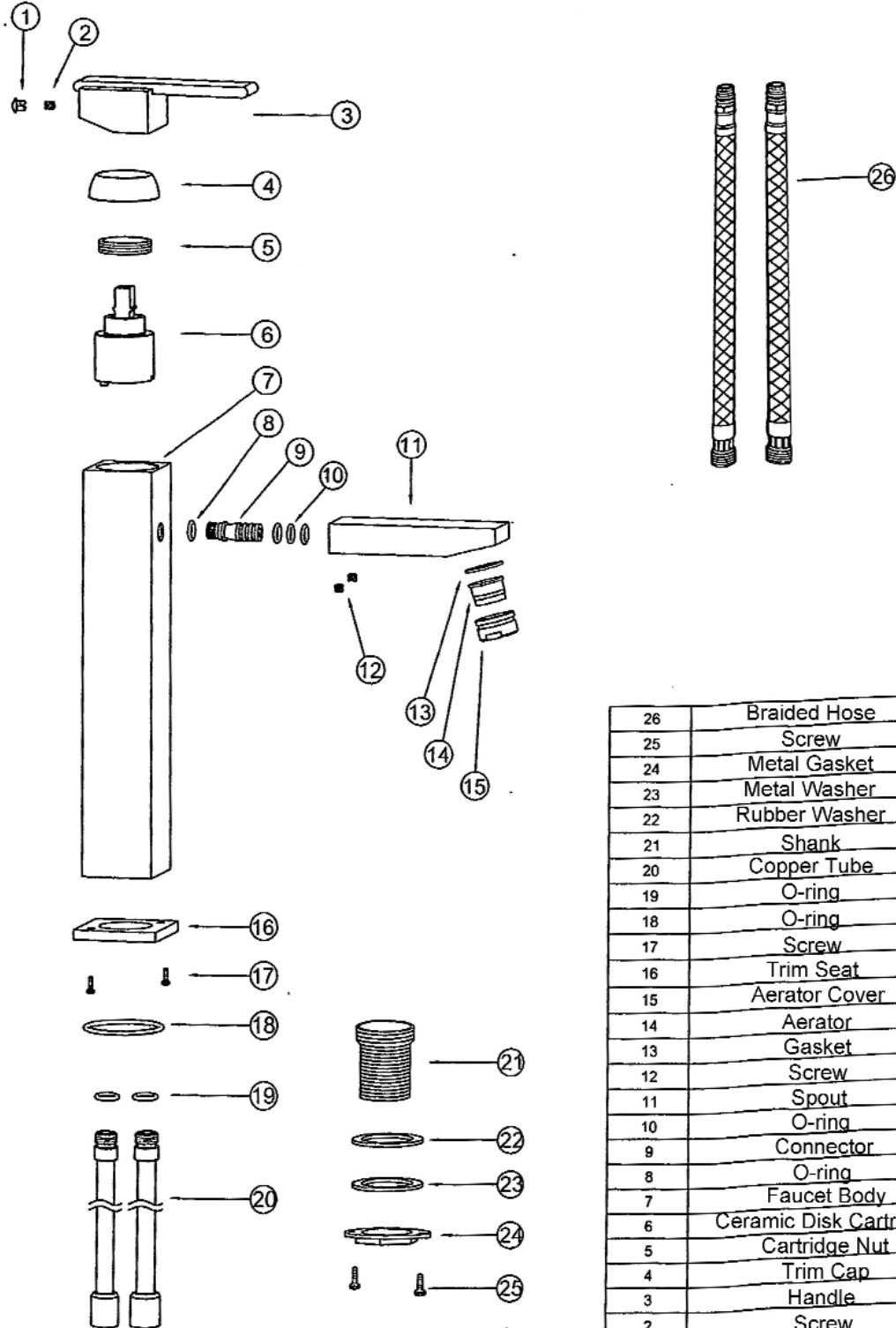


5. After installing faucet, remove spray assembly and open the hot and cold water supplies. Check for leaks. Turn on faucet handle for one minute to flush debris from faucet. Close the handles and re-assemble the spray.



Single Handle Vessel Faucet LFBV406

Exploded Drawing



No.	Part Description	Quantity
26	Braided Hose	2
25	Screw	2
24	Metal Gasket	1
23	Metal Washer	1
22	Rubber Washer	1
21	Shank	1
20	Copper Tube	2
19	O-ring	2
18	O-ring	1
17	Screw	1
16	Trim Seat	1
15	Aerator Cover	1
14	Aerator	1
13	Gasket	1
12	Screw	2
11	Spout	1
10	O-ring	3
9	Connector	1
8	O-ring	1
7	Faucet Body	1
6	Ceramic Disk Cartridge	1
5	Cartridge Nut	1
4	Trim Cap	1
3	Handle	1
2	Screw	1
1	Button	1