

INSTALLATION INSTRUCTIONS

INSTALLATION MANUAL

Tools You Will Need:



Plumber's putty



Pipe tape



Phillips Screwdriver



Pliers

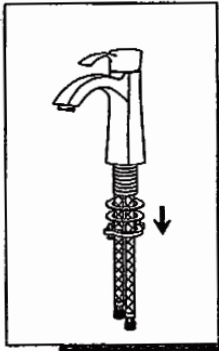


Adjustable wrench

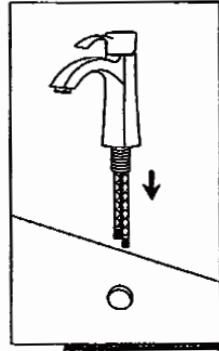


Model number: LFS304-XX / WE6021AXX

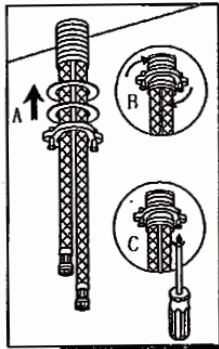
INSTALLATION STEPS:



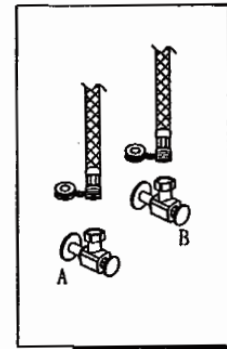
1. Remove the mounting hardware from the faucet.



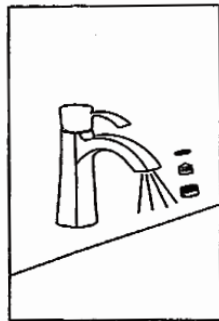
2. Install faucet body through top of sink.



3. From underneath the sink, replace the washers and lock nut. Use phillips screwdriver for final tightening after spout is aligned.



4. Connect to water supply.



6. After installing faucet, remove spray assembly and open the hot and cold water supplies. Check for leaks. Turn on faucet handle for one minute to flush debris from faucet. Close the handles and re-assemble the spray.



Single Handle Lavatory Faucet LFS304

Exploded Drawing

